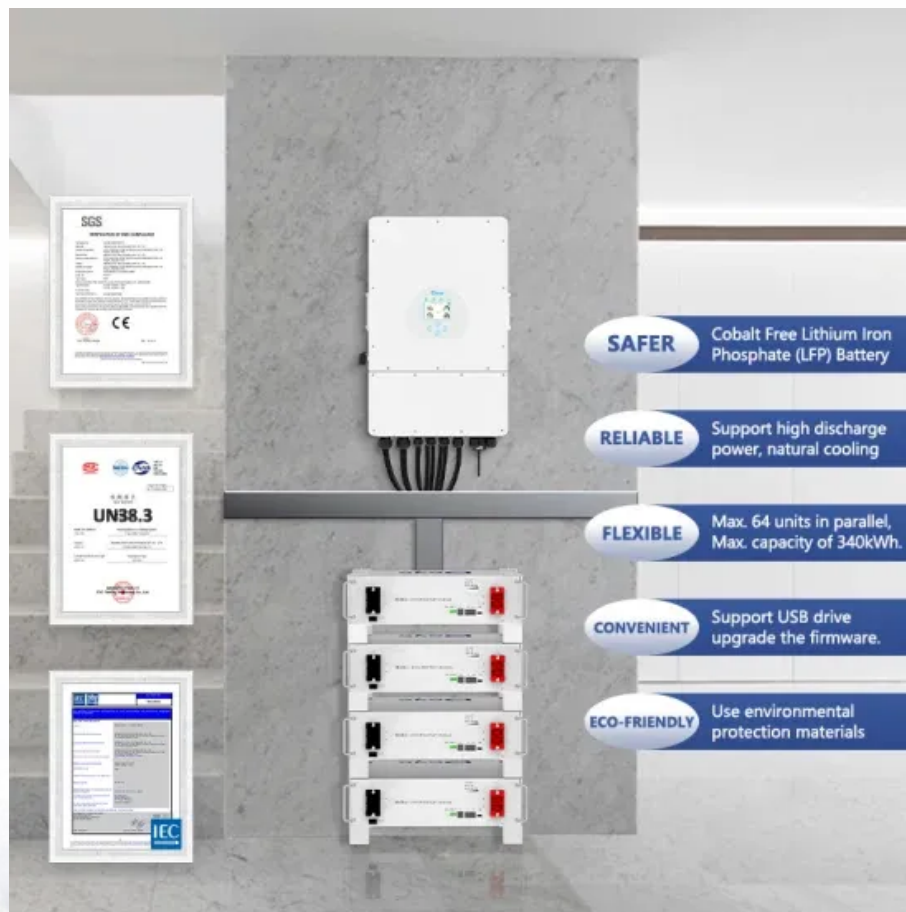


SolarMax Energy Systems

What types of wind power equipment are there in communication base stations



Overview

Can wind energy be used to power mobile phone base stations?

Worldwide thousands of base stations provide relaying mobile phone signals. Every off-grid base station has a diesel generator up to 4 kW to provide electricity for the electronic equipment involved. The presentation will give attention to the requirements on using windenergy as an energy source for powering mobile phone base stations.

What are small wind turbines for remote telecom towers?

Small wind turbines provide a secure and cost-effective alternative. They ensure telecom towers run smoothly, even in remote and challenging environments. This article explores how small wind turbines for remote telecom towers are revolutionizing energy solutions, highlighting their benefits and practical applications.

How can wind energy help a telecom tower?

Contact Freen to discuss wind energy options for your infrastructure. Hybrid renewable energy systems are ideal for telecom towers in areas where grid connection is expensive or unavailable. Combining wind turbines, solar panels, and battery storage creates an efficient solution. These systems ensure energy availability around the clock.

Which telecommunication services are more sensitive to wind turbines?

The telecommunication services included in this review are those that have demonstrated to be more sensitive to nearby wind turbines: weather, air traffic control and marine radars, radio navigation systems, terrestrial television and fixed radio links.

Can wind turbines be used for telecom towers?

Natural disasters like bushfires and floods exacerbated the problem. To address this, Diffuse Energy, a Newcastle-based startup, developed small-

scale wind turbines for telecom towers. Supported by \$341,990 in funding from the Australian Renewable Energy Agency (ARENA), they installed turbines at 10 remote sites.

How can a small wind turbine help the telecom industry?

As the push for net-zero carbon emissions accelerates, the telecom sector must adopt innovative, renewable energy solutions for telecom sites. Small wind turbines provide a secure and cost-effective alternative. They ensure telecom towers run smoothly, even in remote and challenging environments.

What types of wind power equipment are there in communication b



Communication Base Station Energy Power Supply System

The wind-solar-diesel hybrid power supply system of the communication base station is composed of a wind turbine, a solar cell module, an integrated controller for hybrid energy ...

[Get a quote](#)

Base station types: a solution for every deployment scenario

In critical communications deployments, each environment offers physical, geographical and climatic characteristics that will be decisive when it comes to providing ...



[Get a quote](#)



A review of renewable energy based power supply options for ...

Moreover, information related to growth of the telecom industry, telecom tower configurations and power supply needs, conventional power supply options, and hybrid system ...

[Get a quote](#)

Energy Systems in Telecommunications

Base Stations: Cellular base stations require continuous power to provide mobile communication services. Energy systems with backup power solutions ensure ...

[Get a quote](#)



Base station

In radio communications, a base station is a wireless communications station installed at a fixed location and used to communicate as part of one of the following: a push-to-talk two-way radio ...

[Get a quote](#)

Wind Energy , Department of Energy

4 days ago· Wind power or wind energy is a form of renewable energy that harnesses the power of the wind to generate electricity. It involves using wind turbines to convert the turning motion ...

[Get a quote](#)



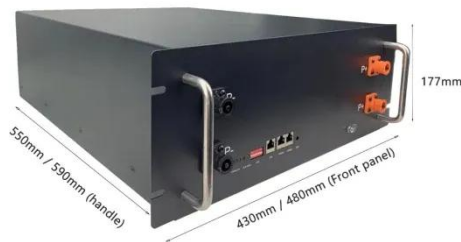
Energy Storage Solutions for Communication Base ...

The incorporation of renewable energy sources such as solar and wind into the

power supply for communication base stations is gaining traction. With ...

[Get a quote](#)

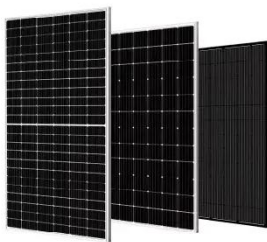
PUSUNG-R (Fit for 19 inch cabinet)



Small Wind Turbines for Remote Telecommunications Towers

This article explores how small wind turbines for remote telecom towers are revolutionizing energy solutions, highlighting their benefits and practical applications.

[Get a quote](#)



Energy Systems in Telecommunications

Base Stations: Cellular base stations require continuous power to provide mobile communication services. Energy systems with backup power solutions ensure uninterrupted service. Data ...

[Get a quote](#)

Energy-efficiency schemes for base stations in 5G heterogeneous

In today's 5G era, the energy efficiency (EE) of cellular base stations is crucial for sustainable communication. Recognizing this, Mobile Network Operators are actively prioritizing EE for ...

[Get a quote](#)



Offshore wind transmission explained , Business Norway

Offshore wind turbines create enormous possibilities for green energy. Placed far out at sea, offshore wind turbines harvest strong winds to generate electricity. Before we can ...

[Get a quote](#)

Wind power

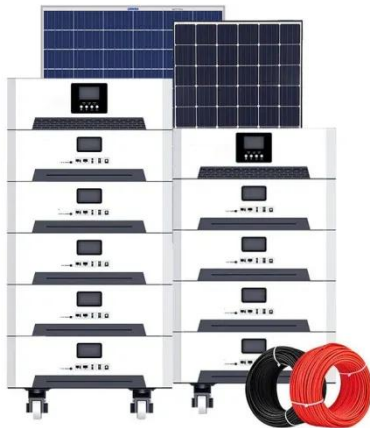
Wind power is the use of wind energy to generate useful work. Historically, wind power was used by sails, windmills and windpumps, but today it is mostly used to generate electricity. This ...

[Get a quote](#)



(PDF) Small windturbines for telecom base stations

The presentation will give attention to the requirements on using windenergy as an energy source for powering mobile



phone base stations.

[Get a quote](#)

Mobile base station

Key challenges Mobile base station designers often need to manage the following aspects: Compatibility for integrating base transceiver stations between different vendors' equipment.

...

[Get a quote](#)



How to make wind solar hybrid systems for telecom stations?

Wind & solar hybrid power generation consists of wind turbines, controllers, inverters, photovoltaic arrays (solar panels), battery packs (lithium batteries or gel batteries), DC and AC loads, etc.

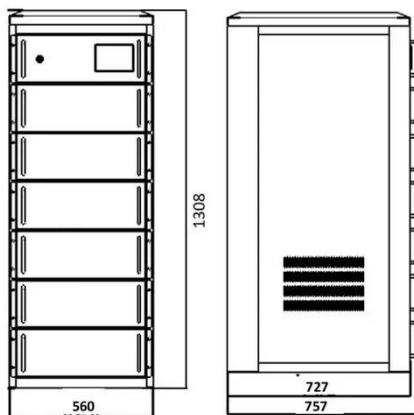
[Get a quote](#)

How to make wind solar hybrid systems for telecom ...

Wind & solar hybrid power generation consists of wind turbines, controllers, inverters, photovoltaic arrays (solar

panels), battery packs (lithium batteries or ...

[Get a quote](#)



Why Telecom Base Stations?

Community Power ignificant opportunity exists to provide environmentally sustainable energy to people in the developing world who live beyond the electricity grid. And it is the mobile

[Get a quote](#)

Radio Base Stations for Secure Communication

In the world of radio communications, a radio base station plays a vital role in ensuring reliable and seamless communication across a wide area. Whether used in mobile networks, ...

[Get a quote](#)



Small Wind Turbines for Remote Telecommunications ...

This article explores how small wind turbines for remote telecom towers are revolutionizing energy solutions,

highlighting their benefits and ...

[Get a quote](#)



Smart BaseStation

We have a number of standard models and options - both DC and AC and options include wind turbine type and inverter size, as well as choosing whether or not a remote monitoring control ...

[Get a quote](#)



Impact analysis of wind farms on telecommunication services

The telecommunication services included in this review are those that have demonstrated to be more sensitive to nearby wind turbines: weather, air traffic control and ...

[Get a quote](#)

3.5 kW wind turbine for cellular base station: Radar cross section

Such base stations are powered by small wind turbines (SWT) having nominal

power in the range of 1.5-7.5 kW. In the context of the OPERA-Net2 European project, the study aims to quantify ...

[Get a quote](#)



Contact Us

For catalog requests, pricing, or partnerships, please visit:
<https://www.zenius.co.za>