

SolarMax Energy Systems

What size inverter is suitable for 12v 200ah



Overview

For a 12V 200Ah lithium battery, a 1500W to 2000W inverter is recommended to ensure efficient performance with headroom for surge loads. Proper sizing enhances system longevity and safety, as exemplified by Redway Power's battery technology. How do I choose the right inverter size for my 200Ah lithium battery?

When it comes to choosing the right inverter size for your 200Ah lithium battery, there are a few factors you'll need to consider. The first is the power needs of the devices you plan on running off the inverter. Take into account their wattage requirements and how many devices will be connected at once.

What voltage should a 12V inverter run on?

The input voltage of the inverter should match the battery voltage. (For example 12v battery for 12v inverter, 24v battery for 24v inverter and 48v battery for 48v inverter Summary What Will An Inverter Run & For How Long?

.

How to choose the best 12V to 240 inverter?

When selecting a power inverter, there are some factors that should be considered for choosing the best 12v to 240 inverters. The size and type of the power inverter are two important factors. The size of the inverter is determined by the wattage that it can handle. The type of the inverter is determined by the voltage that it can handle. 1.

How much battery do I need to run a 3000-watt inverter?

You would need around 24v 150Ah Lithium or 24v 300Ah Lead-acid Battery to run a 3000-watt inverter for 1 hour at its full capacity Here's a battery size chart for any size inverter with 1 hour of load runtime Note! The input voltage of the inverter should match the battery voltage.

How do I calculate the battery capacity of a solar inverter?

Related Post: Solar Panel Calculator For Battery To calculate the battery capacity for your inverter use this formula $\text{Inverter capacity (W)} \times \text{Runtime (hrs)} / \text{solar system voltage} = \text{Battery Size} \times 1.15$ Multiply the result by 2 for lead-acid type battery, for lithium battery type it would stay the same Example.

Who can use a 12V to 230V power inverter?

A 12V to 230V power inverter is ideal for a multitude of users, including caravaners, truck drivers, doctors, electricians, joiners, and anyone who enjoys camping or boating.

What size inverter is suitable for 12v 200ah



What Size Inverter Can I Run Off a 200Ah Lithium Battery?

A 200Ah lithium battery at 12V supports inverters up to about 2400W; 24V and 48V models support larger inverters up to 4000W and 8000W respectively. Always use pure ...

[Get a quote](#)

What Gauge Wire to Connect 12v Batteries (Parallel)

Choosing the right gauge wire for connecting 12V batteries is crucial. Here's how to make the right choice for your 12 batteries in parallel or ...

[Get a quote](#)



Which Inverter is Suitable for a 200Ah Battery?

Choosing the right inverter for a 200Ah battery depends on several factors, including the load size, runtime, and efficiency. The 200Ah battery is large enough to handle ...

[Get a quote](#)

MPPT charge controller

calculator: Find the right solar charge

Example 1: 200W-12V solar array with a 12V battery bank For the first example, we have 2 100W-12Vwatts solar panels, these panels are wired in series and need to charge a ...

[Get a quote](#)



Choosing the Best Inverter Size for a 200Ah Lithium ...

Using an inverter that is too large or too small for your 200Ah lithium battery can lead to inefficiency, overheating, system shutdowns, or battery ...

[Get a quote](#)

Which inverter is best for 200ah battery?

Factors to Consider for a 200Ah Battery-Compatible Inverter. Most 200Ah batteries operate at 12V or 24V. Ensure the inverter matches the battery's voltage. A mismatch can lead to ...

[Get a quote](#)



Can I use 12V or 24V 200AH battery with 1000W inverter?

This can reduce charging time and extend the life of the battery. Conclusion In a 1000-watt power inverter system,

both 12V and 24V 200AH batteries can be used, but their ...

[Get a quote](#)



What Size Inverter Do I Need?

Learn how to calculate what size inverter you need with The Inverter Store's handy guide. We make the process straightforward for you to fit your exact

...

[Get a quote](#)



**2MW / 5MWh
Customizable**

Choosing the Best Inverter Size for a 200Ah Lithium Battery

Using an inverter that is too large or too small for your 200Ah lithium battery can lead to inefficiency, overheating, system shutdowns, or battery damage. Ensuring that your ...

[Get a quote](#)

What Size Inverter Do I Need for a 200Ah Lithium Battery

For a 12V 200Ah lithium battery, a 1500W to 2000W inverter is

recommended to ensure efficient performance with headroom for surge loads. Proper sizing enhances system ...

[Get a quote](#)



What Size Inverter Can I Run Off a 200Ah Battery?

Suitable inverters for a 200Ah battery should match the system voltage (e.g., 12V) and handle the desired load power. Pure sine wave inverters are often preferred for sensitive electronics.

[Get a quote](#)

Choosing the Best Inverter Size for a 200Ah Lithium Battery

To calculate the wire and fuse size needed for the inverter you would take the inverter wattage, divide by 12V, then divide by 85% efficiency.

[Get a quote](#)



Microtek DuraStrong , MTK2003624TT 200Ah Inverter

...

Microtek DuraStrong , MTK2003624TT

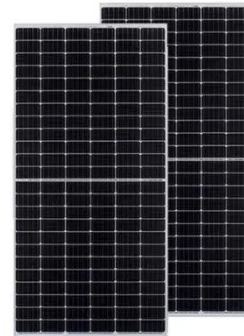


200Ah Inverter Battery , with Advanced Dura Core Technology for Longer Battery Life , Suitable for Home, Office & ...

[Get a quote](#)

What Size Inverter Is Best for a 200Ah Battery?

A 200Ah battery typically pairs with a 1,500W-3,000W inverter, depending on power needs. For continuous loads, select an inverter with 1.5x your calculated wattage to avoid overloads.



[Get a quote](#)



What Size Inverter Can I Run Off a 200Ah Battery?

Suitable inverters for a 200Ah battery should match the system voltage (e.g., 12V) and handle the desired load power. Pure sine wave inverters are often preferred for sensitive ...

[Get a quote](#)

What Size Wire For Any Inverter: Inverter Wire Size ...

Choosing the right cables for your inverter can be downright confusing. This guide helps you find the right size

wire for any sized inverter.

[Get a quote](#)



What Size Inverter Do I Need for a 200AH Battery?

Choosing the right inverter size for a 200AH battery is crucial for ensuring optimal performance and efficiency. This section provides detailed insights into how to calculate the ...

[Get a quote](#)

Calculate Battery Size For Any Size Inverter (Using Our Calculator)

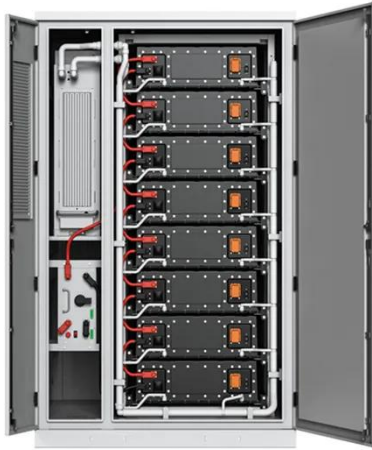
Inverter capacity (W)*Runtime (hrs)/solar system voltage = Battery Size*1.15.
Multiply the result by 2 for lead-acid type battery, for lithium battery type it would stay the ...

[Get a quote](#)



What Size Charger Is Best for a 200Ah Battery with Inverter ...

For a 200Ah battery paired with an



inverter, a charger rated at 20-40 amps (10-20% of the battery's capacity) is ideal. Voltage must match the battery bank (12V, 24V, or ...

[Get a quote](#)

How Do You Calculate the Appropriate Inverter Size for a 48V ...

To calculate the appropriate inverter size for a 48V battery system, you need to determine the total wattage of the devices you plan to power. The formula is: Inverter Size ...



[Get a quote](#)



How Long Will a 2000W Inverter Run on a 200Ah Battery?

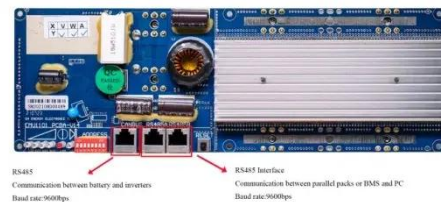
A 200Ah battery can theoretically power a 2000W inverter for approximately 1.2 hours under ideal conditions. However, actual runtime may vary based on factors such as inverter efficiency, ...

[Get a quote](#)

Best Inverter for 200Ah Battery: A Complete Guide 2025

Find the best inverter for your 200Ah battery setup. Compare top models, get expert tips, and shop reliable inverters for RVs, homes, and off-grid use.

[Get a quote](#)



Lithium Batteries: What Size Inverter Can I Use?

When calculating the amp usage of an inverter, you take the output wattage of the inverter and divide it by the battery voltage, i.e. $1000W \div 12V = 83.33$ Amps. The other question we always ...

[Get a quote](#)

Calculate Battery Size For Any Size Inverter (Using ...

Inverter capacity (W)*Runtime (hrs)/solar system voltage = Battery Size*1.15.
Multiply the result by 2 for lead-acid type battery, for lithium battery ...

[Get a quote](#)



12V LiFePO4 terminal fuse type and sizing

Right now the top battery choice is a PowerUrUs 12V 200 Ah battery, two batteries in parallel. Four 100Ah

batteries in parallel with 100A BMSs is a possibility. I was thinking of ...

[Get a quote](#)



Contact Us

For catalog requests, pricing, or partnerships, please visit:
<https://www.zenius.co.za>