

## SolarMax Energy Systems

# What size battery inverter to use



## Overview

---

To recharge your battery from time to time you would need the right size solar panel to do the job! Read the below article to find out the suitable solar panel size for your battery bank .

Note!The battery size will be based on running your inverter at its full capacity  
Assumptions 1. Modified sine wave inverter efficiency: 85% 2. Pure sine wave inverter efficiency:90% 3. Lithium Battery:100% Depth of discharge limit 4. lead-acid.

To calculate the battery capacity for your inverter use this formula Inverter capacity (W)\*Runtime (hrs)/solar system voltage = Battery Size\*1.15 Multiply the result by 2 for lead-acid type.

You would need around 24v150Ah Lithium or 24v 300Ah Lead-acid Batteryto run a 3000-watt inverter for 1 hour at its full capacity .

Here's a battery size chart for any size inverter with 1 hour of load runtime  
Note! The input voltage of the inverter should match the battery voltage. (For example 12v battery for 12v.

What is the recommended battery size for an inverter?

Interpreting Results: Once you input the required data, the calculator will generate the recommended battery size in ampere-hours (Ah). For instance, if your power consumption is 500 watts, the usage time is 4 hours, and the inverter efficiency is 90%, the calculator might suggest a battery size of approximately 222 Ah.

What is the calculate battery size for inverter calculator?

The Calculate Battery Size for Inverter Calculator helps you determine the optimal battery capacity needed to support your inverter system. By inputting critical parameters such as power consumption, inverter efficiency, and desired usage time, this calculator provides a precise battery size recommendation tailored to your specific needs.

How big should a solar inverter be?

Getting the inverter size right depends on two key factors: Inverters work most efficiently when operating near their maximum capacity and are typically sized to be roughly the same size as your solar panels. Inverters are usually sized lower than the kilowatt peak (kWp) of the solar array because solar panels rarely achieve peak power.

What voltage should a 12V inverter run on?

The input voltage of the inverter should match the battery voltage. (For example 12v battery for 12v inverter, 24v battery for 24v inverter and 48v battery for 48v inverter Summary What Will An Inverter Run & For How Long?

.

How much battery should a 500 watt inverter use?

For instance, if your power consumption is 500 watts, the usage time is 4 hours, and the inverter efficiency is 90%, the calculator might suggest a battery size of approximately 222 Ah. Practical Tips: Ensure all input values are accurate to avoid skewed results.

How much battery do I need to run a 3000-watt inverter?

You would need around 24v 150Ah Lithium or 24v 300Ah Lead-acid Battery to run a 3000-watt inverter for 1 hour at its full capacity Here's a battery size chart for any size inverter with 1 hour of load runtime Note! The input voltage of the inverter should match the battery voltage.

## What size battery inverter to use

---



### How to Calculate Solar Panel, Battery, and Inverter Size

By accurately calculating your energy needs, desired backup time, and considering factors like system efficiency and future expansion, you can ...

[Get a quote](#)

### How Many Batteries for a 3000 watt Inverter? [Diagrams]

How many batteries for a 3000 watt inverter do you need? In the article we are going to talk about two aspects of batteries that need to get your ...

[Get a quote](#)



### What Size Inverter You Need (Calculations + Battery)

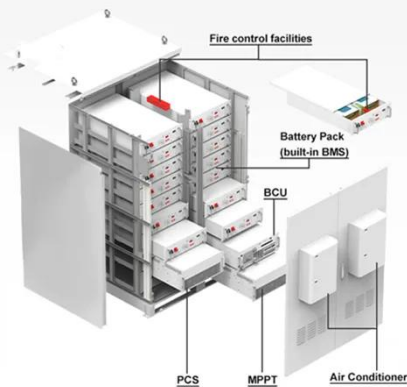
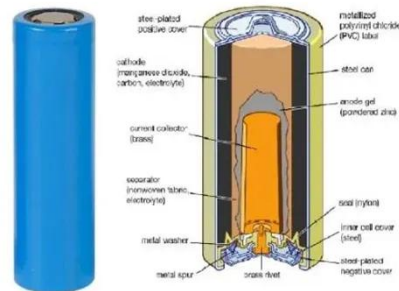
Inverters are made with different power capacities, depending on the size of the system you want to run. For this discussion, we are looking at a ...

[Get a quote](#)

## Solar Battery Size Guide: kWh, Inverter & Runtime

2 days ago · Size your solar battery using load profile, critical loads, efficiency and DoD. Calculator matches kWh, inverter and runtime for code-compliant installs.

[Get a quote](#)



## How Many Batteries Do I Need For a 1000 Watt Inverter

If you connect more batteries, you can use the inverters longer, but it also needs high maintenance and cost. It depends on several factors to ...

[Get a quote](#)

## Solar inverter size: Calculate the right size for your inverter

Most UK homes need at least a 5 kW inverter. While 3.68 kW is common, larger homes or those with batteries benefit from a 5 kW+ system.

[Get a quote](#)



## Can an Inverter Be Too Big for Your Battery System?

How to Calculate the Right Inverter Size for Your Battery Match the inverter's continuous wattage rating to the



battery's discharge capacity. For a 12V 200Ah battery (2.4kWh), a 2000W inverter ...

[Get a quote](#)

---

## How to Calculate Solar Panel, Battery, and Inverter Size

By accurately calculating your energy needs, desired backup time, and considering factors like system efficiency and future expansion, you can determine the appropriate sizes for your ...

[Get a quote](#)



## Solar Inverter & Battery Sizing Calculator

In this step, you will verify what will help you choose the correct battery size. The battery size determines how long you can take this load. Most people select a 2-hour backup.

[Get a quote](#)

---

## Calculate Battery Size for Inverter Calculator

Estimate the battery capacity required for your inverter based on power load, runtime, and efficiency. Using the

Calculate Battery Size for Inverter Calculator can ...

[Get a quote](#)



## How Many Batteries Do I Need For A 2000 Watt ...

In summary, for an inverter 2000 watt 12 volt, we recommend selecting a 12V battery with a capacity of at least 100Ah and choosing the ...

[Get a quote](#)

## How to Calculate the Right Battery Size for Your Inverter System

Calculating the correct battery size ensures that your inverter system can meet your power needs without leaving you in the dark during outages. An undersized battery may not provide enough ...

[Get a quote](#)



## Solar inverter size: Calculate the right size for your ...

Most UK homes need at least a 5 kW



inverter. While 3.68 kW is common, larger homes or those with batteries benefit from a 5 kW+ system.

[Get a quote](#)

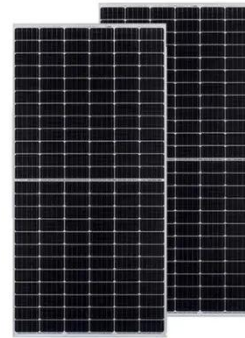


---

## Find the Right Inverter Size: How Big An Inverter Do ...

An inverter is a device that turns the power from a 12 volt DC battery, like the one in your car or truck, into the 120 volt AC power that runs ...

[Get a quote](#)



---

## What Size Inverter You Need (Calculations + Battery)

Inverters are made with different power capacities, depending on the size of the system you want to run. For this discussion, we are looking at a domestic inverter that you can ...

[Get a quote](#)



---

## What Size Battery Do I Need for a 1000W Inverter?

To power a 1000W inverter, you typically need a battery with a minimum capacity of 100Ah if you plan to run it for about



one hour. However, the actual size may vary based on ...

[Get a quote](#)



## The Ultimate Guide to Choose Batteries for Inverter

What type and size of battery is best for inverter? Lead acid, gel and lithium battery, what's the difference? Keep reading and choose the best ...

[Get a quote](#)

## Calculate Battery Size For Any Size Inverter (Using Our Calculator)

To recharge your battery from time to time you would need the right size solar panel to do the job! Read the below article to find out the suitable solar panel size for your battery bank

[Get a quote](#)



## How to Calculate the Right Battery Size for Your ...

Calculating the correct battery size ensures that your inverter system can



meet your power needs without leaving you in the dark during outages. An ...

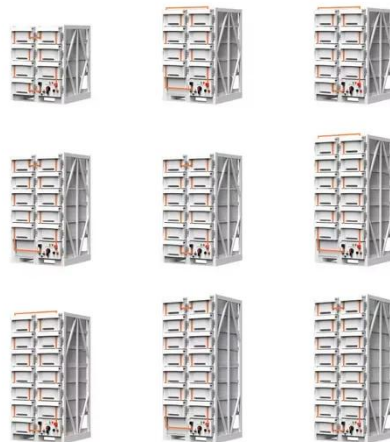
[Get a quote](#)

---

## How to Calculate Battery Size for Inverters of Any Size

Learn how many batteries for a 3000-watt inverter or a 1kVA inverter and more, right here at The Inverter Store. In order to size a battery bank, we take the hours needed to continuously run ...

[Get a quote](#)



## Advice on selecting an inverter - Sinetech

How do I connect an inverter? The small inverters (150 watts) come with a cigarette lighter adapter, and may be plugged into your car's lighter socket. Units from 300W and above, are ...

[Get a quote](#)

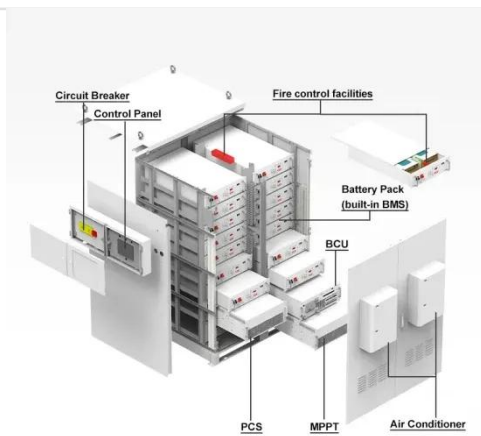
---

## What Will An Inverter Run & For How Long? (With ...

So I'm gonna explain to you guys in simple words about what you can run on

your any size inverter and what are the key point to keep in mind. ...

[Get a quote](#)



## What Size Inverter Can I Run Off a 100Ah Battery? A ...

Understanding Battery and Inverter Basics Battery Capacity and Inverter Compatibility A 100Ah battery signifies its capacity to deliver 100 ampere-hours of current. This ...

[Get a quote](#)

## Solar Inverter & Battery Sizing Calculator

In this step, you will verify what will help you choose the correct battery size. The battery size determines how long you can take this load. ...

[Get a quote](#)



## What Size Inverter for 100Ah Battery

? Free Diagrams:  
<https://cleversolarpower/free-diagrams/>  
? My Best-Selling book on Amazon:



[https://cleversolarpower /off-grid-solar-power-simplified](https://cleversolarpower/off-grid-solar-power-simplified)

[Get a quote](#)

## What size battery does a 1000 watt inverter need and how much ...

According to statistics, the number of people using inverters is growing. Accordingly, in order to better choose and use them, we also need to further understand the inverter. ...



[Get a quote](#)



## How to Choose the Right Inverter Size for Home , Luminous India

Learn how to choose the right inverter for your home. Calculate inverter capacity, understand kVA requirements, and pick the best inverter for reliable backup.

[Get a quote](#)

## Contact Us

For catalog requests, pricing, or partnerships, please visit:  
<https://www.zenius.co.za>