

SolarMax Energy Systems

What should the battery cabinet current be



Overview

What should I know before installing a battery cabinet system?

Never enclose batteries or battery cabinets in a sealed air tight room. All jewelry and watches must be removed prior to installing or servicing this system. Do not smoke or present flame near or around any battery cabinet system. Never leave a panel off or door open and unattended. 3. INSPECTION UPON RECEIPT OF GOODS.

How much does a battery cabinet weigh?

Battery cabinet systems are very heavy. Total weight of a loaded cabinet can exceed 6100 lbs. Use at least 3 people when unloading and setting equipment in place. It is imperative that only qualified personnel work on this system and installation, maintenance or upgrades be performed with insulated tools and equipment.

How much clearance do you need for a battery cabinet?

Clearance: A minimum of four inches is required in both the front and the rear of the cabinet. This refers to obstruction of ventilation only. Clearance around cabinet sides is suggested by NEC and local codes. CAUTION! Explosion/Fire Hazard Warning: Batteries can generate potentially explosive gas (hydrogen).

How do I install a battery cabinet?

Install plastic covers onto batteries. Some covers may need to be notched for locations with bus bars and/or cables in upward orientation. Ground the battery cabinet to the main building ground. A ground stud inside the cabinet is provided for this. Refer to the UPS or charger manual for start up and operation of system.

How do you ground a battery cabinet?

Ground the battery cabinet to the main building ground. A ground stud inside the cabinet is provided for this. Refer to the UPS or charger manual for start

up and operation of system. 8. SYSTEM MAINTENANCE.

What temperature should a battery be stored in?

Any storage shall be in a dry area having ambient temperature of 77o F (25° C), or less, and in accordance with battery manufacturer published installation, operation and maintenance instructions.

What should the battery cabinet current be



Battery Cabinet

For a UPS system that does not ground the DC/Battery Circuit, isolation should be maintained between the chassis and any point in the battery circuit, to reduce the risk of electric shock ...

[Get a quote](#)

Why Should Battery Racks Be Grounded? Safety and ...

Battery racks should be grounded to prevent electrical hazards, reduce fire risks, and ensure compliance with safety standards like NEC Article 480 and NFPA 70. Grounding ...



[Get a quote](#)



Guidelines for Current Transformer (CT) installation

Consumption metering: IQ Gateway/IQ Combiner supports split-core or clamp-style current transformers for consumption metering. IQ Battery metering: For sites with IQ Battery, the IQ ...

[Get a quote](#)

Microsoft Word

DC power and battery supplies are dangerous and have extremely high short circuit currents. Severe burns or death can result from a system short. They also can leak potentially explosive ...

[Get a quote](#)



UBC87 Battery Cabinet Installation, Operation,

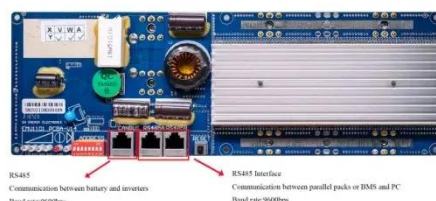
Whether the Battery Cabinet is empty or partially assembled, it should be located, mounted and properly grounded prior to final assembly as instructed in this manual in sections 6.2.1, 6.2.2 ...

[Get a quote](#)

Specifications and requirements for battery cabinets in weak ...

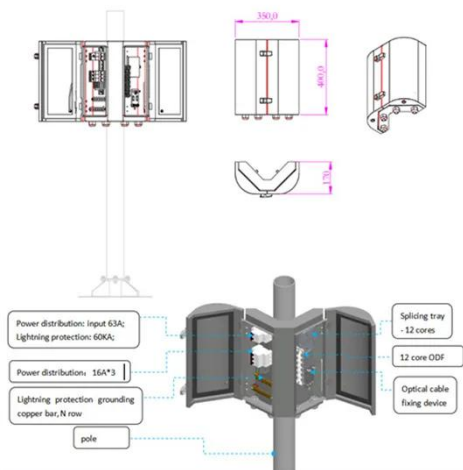
This article describes best practices for designing battery rooms including practical battery stand systems and accessible cabinet enclosures .

[Get a quote](#)



What charging current should I use for a lead acid battery?

For example: In a 12V 45Ah Sealed Lead Acid Battery, the capacity is 45 Ah. So,



the charging current should be no more than 11.25 Amps (to prevent thermal runaway and ...

[Get a quote](#)

25432.book

The Maintenance Bypass Cabinet should be installed by a qualified engineer in accordance with the information contained in this chapter All equipment not referred to in this manual is shipped

...

[Get a quote](#)



6& 10 OBC EN

This battery cabinet option is designed Power System (UPS) models GXT 6/10 kVA electrical personnel only. The battery accordance with local/national electrical Up to two optional battery ...

[Get a quote](#)

Vertiv Liebert® APM2 Modular EBC User Manual

Save these instructions This manual contains important instructions that should be followed during installation of

Vertiv™ Liebert® APM2 Modular
External Battery Cabinet (EBC) and ...

[Get a quote](#)



Choosing the Right Battery Storage Cabinet: A ...

This comprehensive guide provides a detailed overview of safety, design, compliance, and operational considerations for selecting and using ...

[Get a quote](#)

Checklist: Venting Clearance and Code Rules for Battery Cabinets

Stop battery overheating. This checklist details essential venting clearance and code rules for safe, compliant battery cabinet installation.

[Get a quote](#)



DC battery cabinet grounding requirements and standards

For relay rack / cabinet grounding requirements, refer to the current edition of the American National Standards



Institute (ANSI) approved National Fire Protection Association's (NFPA) ...

[Get a quote](#)

NetSure(TM) 211 Series -48 VDC Battery Cabin

2.2 General Requirements The installer should be familiar with the installation requirements and techniques to be used in securing the battery cabinet to a relay rack or wall.

[Get a quote](#)



Choosing the Right Battery Storage Cabinet: A Comprehensive ...

This comprehensive guide provides a detailed overview of safety, design, compliance, and operational considerations for selecting and using lithium-ion battery storage ...

[Get a quote](#)



EG4 WELDED INDOOR CABINET USER MANUAL Pdf Download

View and Download EG4 Welded Indoor

Cabinet user manual online. BATTERY CABINET. Welded Indoor Cabinet battery pack pdf manual download.

[Get a quote](#)



Vol. I

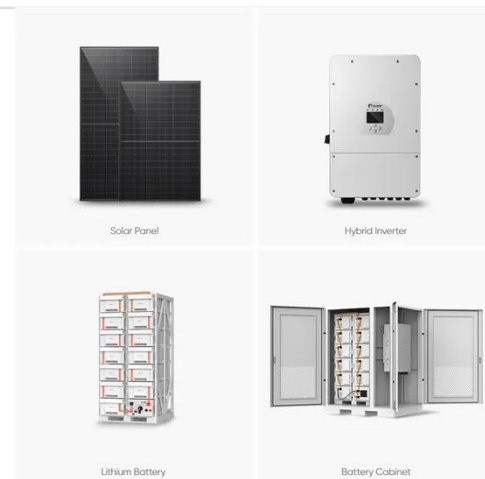
An amp-hour battery rating is only an approximation of the battery's charge capacity, and should be trusted only at the current level or time specified by the manufacturer. Such a rating cannot ...

[Get a quote](#)

UPS Battery Cabinets

ZincFive BC Series UPS Battery Cabinet Introduction Each ZincFive BC Series UPS Battery Cabinet features ZincFive's patented Nickel-Zinc batteries and a built-in battery monitoring ...

[Get a quote](#)



Similar

The exposed parts of the leads should be painted thoroughly with pre-servative i)aint. If the storage battery cabinet is near by the leads, it can be carried

directly co it; but if any ...

[Get a quote](#)



-48 VDC Battery Cabinet Installation and User Manual ...

Although the DC voltage is not hazardously high, the battery can deliver large amounts of current. Exercise extreme caution not to inadvertently contact or have any tool inadvertently contact a ...

[Get a quote](#)



Series:Oasis-L215 OasisL215

1.1 Attention Oasis L215 battery cabinet is a specialized energy storage device. To ensure your installation and use is correct and safe, be sure to read this manual thoroughly before starting ...

[Get a quote](#)

What is the voltage of the energy storage battery cabinet?

The voltage of energy storage battery

cabinets typically ranges from 12V to 800V, influenced by application requirements, technology used, and the configuration of battery cells.

[Get a quote](#)



DC wiring from battery storage to UPS , Information by Electrical

The battery cabinet has a maximum voltage of 575VDC and a max current of 511 amps. My thoughts are to install 2 individual 2" conduits between the battery storage and the ...

[Get a quote](#)

Contact Us

For catalog requests, pricing, or partnerships, please visit:
<https://www.zenius.co.za>