

## SolarMax Energy Systems

# What is the minimum size of a photovoltaic inverter



## Overview

---

Solar inverters come in a range of sizes What Size Solar Inverter Do I Need?

Inverters come in different sizes starting from as little as 125 watts. The typical inverter sizes used for residential and commercial applications are between 1 and 10kW with 3 and 5kW sizes being the most common. How big should a solar inverter be?

As a general rule of thumb, the size of your inverter should be similar to the DC rating of your solar panel system; if you are installing a 6 kilowatt (kW) system, you can expect the proposed inverter to be around 6000 W, plus or minus a small percentage.

Can a solar inverter be bigger than the DC rating?

The size of your solar inverter can be larger or smaller than the DC rating of your solar array, to a certain extent. The array-to-inverter ratio of a solar panel system is the DC rating of your solar array divided by the maximum AC output of your inverter. For example, if your array is 6 kW with a 6000 W inverter, the array-to-inverter ratio is 1.

How many watts a solar inverter do I Need?

A 200 watt portable unit such as the NDDI Direct Power Inverter will be sufficient for that. If you are going to run an air conditioner or a refrigerator in your RV, a more powerful inverter and battery are required. Ready to size your solar system the smart way?

.

Do you need a solar inverter?

The inverter is one of the most important components of a home or portable solar power system. Solar panels produce DC electricity, but you need an inverter to convert DC power into 120/220 volt AC electricity. Only after conversion can home appliances and other devices use it.

## What is a solar power inverter?

A solar power inverter is an essential element of a photovoltaic system that makes electricity produced by solar panels usable in the home. It is responsible for converting the direct current (DC) output produced by solar panels into alternating current (AC) that can be used by household appliances and can be fed back into the electrical grid.

## How do I choose a solar inverter?

This is the most critical factor in solar inverter sizing. Check the total wattage of your solar array (DC) and use it to calculate the appropriate inverter output (AC). For optimal results, a 6.6kW array typically pairs with a 5kW inverter, falling within the accepted array-to-inverter ratio of 1.15 to 1.33.

## What is the minimum size of a photovoltaic inverter

---



### Solar inverter size: Calculate the right size for your inverter

Getting the inverter size right depends on two key factors: Inverters work most efficiently when operating near their maximum capacity and are typically sized to be roughly the same size as ...

[Get a quote](#)

---

### What Size Solar Inverter Do I Need? A Quick Sizing ...

This guide will walk you through an easy, step-by-step process to accurately size your inverter, avoid common pitfalls, and highlight how our Lefor Solar Inverter ...

[Get a quote](#)

---



### Solar Transformers: Sizing, Inverters, and E-Shields

Learn all about transformer sizing and design requirements for solar applications--inverters, harmonics, DC bias, overload, bi-directionality, and more.

[Get a quote](#)

---



### How does sizing a solar

## inverter work?

As a general rule of thumb, the size of your inverter should be similar to the DC rating of your solar panel system; if you are installing a 6 kilowatt (kW) system, you can expect ...

[Get a quote](#)



## Solar Photovoltaic: SPECIFICATION, CHECKLIST AND GUIDE

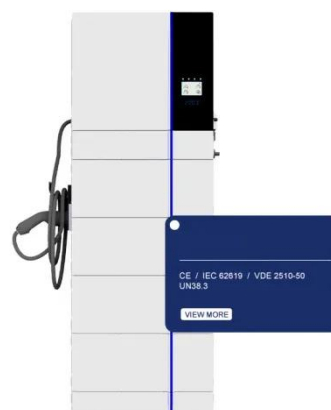
Although the RERH specification does not set a minimum array area requirement, builders should minimally specify an area of 50 square feet in order to operate the smallest grid-tied solar PV ...

[Get a quote](#)

## Solar panel inverters & costs: the expert guide [UK, ...

Solar panel inverters play a crucial role in any solar panel system, ensuring that the energy harvested from the sun is usable within your home. ...

[Get a quote](#)



## What Size Solar Inverter Do I Need? A Quick Sizing Guide

This guide will walk you through an easy,



step-by-step process to accurately size your inverter, avoid common pitfalls, and highlight how our Lefor Solar Inverter Series can fit your specific ...

[Get a quote](#)

## Solar Inverter Sizing Guide for Maximum Efficiency , Mingch

In most cases, the inverter size should be close to the size of your solar panel system, within a 33% ratio. For example, a 6.6kW solar array often pairs with a 5kW inverter to ...

[Get a quote](#)



## Solar inverter size: Calculate the right size for your ...

Getting the inverter size right depends on two key factors: Inverters work most efficiently when operating near their maximum capacity and are typically sized ...

[Get a quote](#)

## How To Size A Solar Inverter in 3 Easy Steps

In this guide, we share 3 easy steps on how to size a solar inverter correctly. We explain the key concepts that determine

solar inverter sizing including your power needs, the type and number ...

[Get a quote](#)



## Solar inverter sizing: Choose the right size inverter

Most PV systems don't regularly produce at their nameplate capacity, so choosing an inverter that's around 80 percent lower capacity than the PV ...

[Get a quote](#)

## NEC 2020 , 705.11 , Load and Supply Side Connections

The National Electric Code allows for a few different ways to interconnect PV systems to utility systems. In two editions of Code Corner, ...

[Get a quote](#)



## Inverter Specifications and Data Sheet

The article provides an overview of inverter functions, key specifications, and common features found in inverter





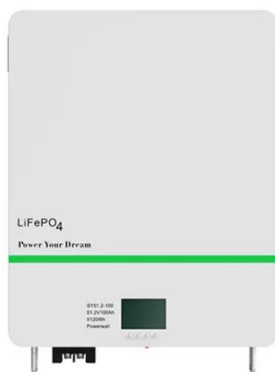
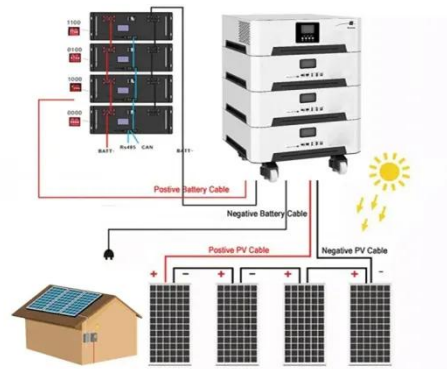
systems, along with an example of power ...

[Get a quote](#)

## Solar Inverter Sizing Guide for Maximum Efficiency

Solar inverter sizing refers to choosing an inverter with the appropriate AC output for your solar panel system's DC input. It's about ...

[Get a quote](#)



## Standard Solar Panel Sizes And Wattages (100W ...

The goal here is to get to the average solar panel size by wattage. You can find typical dimensions of 100W, 150W, 170W, 200W, 200W, 220W, 300W, 350W, ...

[Get a quote](#)

## What Size Inverter Do I Need for the Solar System?

Unlock solar potential with the perfect inverter size! Learn how to match your PV system's power needs for peak



efficiency. Click for expert ...

[Get a quote](#)



## Solar Inverter String Design Calculations

For many new to photovoltaic system design, determining the maximum number of modules per series string can seem straight forward, right? Simply divide ...

[Get a quote](#)

## Solar Inverter Sizing Guide for Maximum Efficiency

In most cases, the inverter size should be close to the size of your solar panel system, within a 33% ratio. For example, a 6.6kW solar array often ...

[Get a quote](#)



## Solar inverter sizing: Choose the right size inverter

Most PV systems don't regularly produce at their nameplate capacity, so choosing an inverter that's around 80 percent

lower capacity than the PV system's nameplate output is ideal.

[Get a quote](#)



## What Size Inverter Do I Need for the Solar System?

Unlock solar potential with the perfect inverter size! Learn how to match your PV system's power needs for peak efficiency. Click for expert sizing tips!

[Get a quote](#)



114KWh ESS



## What Size Solar Inverter Do I Need? A Quick Sizing ...

Introduction Choosing the right solar inverter is critical to getting the most out of your photovoltaic (PV) system. Many DIY installers and homeowners ask, " ...

[Get a quote](#)

## How To Size an Inverter: Solar Inverter Sizing Explained

Choose an inverter size that's at least 20% larger than the total calculated wattage. Identify the largest power



draws in your RV to accurately ...

[Get a quote](#)



Modular design,  
unlimited combinations in parallel  
**BUILT-IN DUAL FIRE PROTECTION MODULE**



## **pV source circuit wire sizing , Information by Electrical ...**

Well i always thought I understood PV wire sizing, but as y'all know it gets a bit complex. I am combining two PV strings on roof. Each string is 10.5 A Isc each = 21 A Isc ...

[Get a quote](#)

## **Understanding Solar Inverter Sizes: What Size Do ...**

Did you know solar inverters come in different sizes? Learn why size is important and which size inverter you need for your solar PV system here.

[Get a quote](#)



## **What Size of Solar Inverter Do I Need?**

Based on the general rule of thumb, the inverter size should be the same as the DC rating of your solar panel system. For

instance, if you are ...

[Get a quote](#)



## How To Size an Inverter: Solar Inverter Sizing Explained

Choose an inverter size that's at least 20% larger than the total calculated wattage. Identify the largest power draws in your RV to accurately size the inverter for your specific needs.

[Get a quote](#)



## What Size Inverter You Need (Calculations + Battery)

The size of the inverter required will be determined by the total wattage of the appliances you need to operate and the time they need to run. You also need to add a bit ...

[Get a quote](#)

## How to Design Solar PV System

Solar PV system includes different components that should be selected according to your system type, site

location and applications. The major components for solar PV system are solar ...

[Get a quote](#)



## What Size of Solar Inverter Do I Need?

Based on the general rule of thumb, the inverter size should be the same as the DC rating of your solar panel system. For instance, if you are planning to install a 5 kilowatt ...

[Get a quote](#)

## Contact Us

For catalog requests, pricing, or partnerships, please visit:  
<https://www.zenius.co.za>