

SolarMax Energy Systems

What is the communication distance of the base station

215kWh

8,000+ Cycles Lifetime

IP54 Protection Degree



Overview

In communications, a base station is a communications station installed at a fixed location and used to communicate as part of one of the following: • a system, or; • a system such as or .

What is a base station in radio communications?

In radio communications, a base station is a wireless communications station installed at a fixed location and used to communicate as part of one of the following: a wireless telephone system such as cellular CDMA or GSM cell site. Base stations use RF power amplifiers (radio-frequency power amplifiers) to transmit and receive signals.

Is a base station a transmitter or broadcast point?

Base stations are generally a transceiver, capable of sending and receiving wireless signals; otherwise, if they only transmitted signals out, they would be considered a transmitter or broadcast point. A base station will have one or more radio frequency (RF) antennas to transmit and receive RF signals to other devices.

How can a mobile vehicle communicate with a base station?

The above graph shows the distance range between a mobile vehicle with a basic vehicle antenna, communicating with a base station using a basic antenna mounted on the roof of a suburban house. Communication distance can be greatly improved over this by advanced gain antenna systems or a high pole or a tower at the base station.

What is a base station in a wireless network?

In the area of wireless computer networking, a base station is a radio receiver/transmitter that serves as the hub of the local wireless network, and may also be the gateway between a wired network and the wireless network. It typically consists of a low-power transmitter and wireless router.

How does a base station communicate with a client device?

Generally, if client devices wanted to communicate to each other, they would communicate both directly with the base station and do so by routing all traffic through it for transmission to another device. Base stations in cellular telephone networks are more commonly referred to as cell towers.

Why can't aircraft communicate with a base station?

Since vhf radio signal travel along a “line of sight”, aircraft that are behind hills or beyond the radio horizon (due to earth curvature) cannot communicate with ground a station, regardless of other favorable conditions. The next most significant factor is base station antenna height.

What is the communication distance of the base station



LoRaWAN Base Station: Your Ultimate Guide to Long ...

LoRaWAN enables long-distance communication between low-power devices and strategically placed base stations. These base stations act as the bridge, ...

[Get a quote](#)

CB Radio Range: What is the Range of a CB Radio?

Base Station Antennas Base stations have an inherent benefit because various types of antennas can be used with the system, and they can be mounted higher and in stable ...



[Get a quote](#)



Radio Distance Range Comparison of Ham CB FRS ...

To simplify, the following charts show how many miles you can usually communicate over normal terrain in suburban or rural areas with different ...

[Get a quote](#)

COMMUNICATIONS RANGE OF

AVIATION BAND BASE ...

The ground station antenna should be at least 15 feet above the ground--20 feet is better and 30 feet even better. If roof mounted, the antenna should be mounted near the highest point on the ...

[Get a quote](#)



FAQ - Distance from a base station

What is the maximum distance you will receive signal from a from a base station (BTS) with 4x4 LTE? Answer: It is important to emphasize that ...

[Get a quote](#)

Base station

A fixed station is a base station used in a system intended only to communicate with other base stations. A fixed station can also be radio link used to operate a distant base station by remote ...

[Get a quote](#)



FAQ - Distance from a base station

What is the maximum distance you will receive signal from a from a base station (BTS) with 4x4 LTE? Answer: It is

important to emphasize that RF propagation depends on ...

[Get a quote](#)



Integrated Sensing and Communication enabled Multiple ...

Driven by the intelligent applications of sixth-generation (6G) mobile communication systems such as smart city and au-tonomous driving, which connect the physical and cyber space, the ...

[Get a quote](#)



Radio Distance Range Comparison of Ham CB FRS MURS ...

To simplify, the following charts show how many miles you can usually communicate over normal terrain in suburban or rural areas with different types of radios, power levels, and station ...

[Get a quote](#)



What Is A Base Station?

In summary, the base station is the active component responsible for network communication, while the tower is the physical structure that supports the base station.

[Get a quote](#)



Base stations

Over large distances, the signals must be relayed by a communication network comprising base stations and often supported by a wired network. The power of a base station varies (typically

...

[Get a quote](#)

Air Force Tactical Communications Flashcards , Quizlet

Study with Quizlet and memorize flashcards containing terms like When you first turn on the AN/PRC-163, what will happen?, The multiband, handheld radio _____ (PA) is used for both ...

[Get a quote](#)



Ham radio base station: Best choices to start with

Well, a ham radio base station is a radio setup used by ham radio operators that



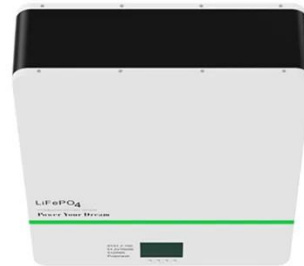
is more stationary rather than being a pocket friendly model like ...

[Get a quote](#)

CB Radio Base Station Antennas , Long Range CB Antennas

Experience extreme range and long distance communication with CB radio base station antennas. They are the go-to for both hobbyists and professionals alike.

[Get a quote](#)



How Far Can a Mobile Talk to a Base Station?

? Urban environments limit communication to hundreds of meters. ? Lab testbeds show even shorter distances due to lower power and interference.

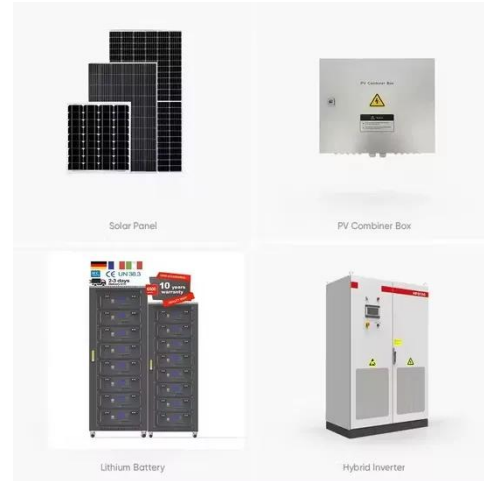
[Get a quote](#)

What Are Base Station Antennas? Complete Guide

Citizen's Band base station antennas are

typically used for short to medium distance communications and generally operate in the frequency range of 26.965 MHz to ...

[Get a quote](#)



What Are Base Station Antennas? Complete Guide

Citizen's Band base station antennas are typically used for short to medium distance communications and generally operate in the frequency ...

[Get a quote](#)

Base station

OverviewWireless communicationsLand surveyingComputer networkingSee also

In radio communications, a base station is a wireless communications station installed at a fixed location and used to communicate as part of one of the following: o a push-to-talk two-way radio system, or;o a wireless telephone system such as cellular CDMA or GSM cell site.

[Get a quote](#)



Microsoft Word



In addition, aircraft antennas normally used for operational control communications are mounted on the aircraft belly making communications difficult when the aircraft is parked at the gate ...

[Get a quote](#)

Base Station (BS) Transmitter Power Level by Cell Radius ...

The properties of the signal path that we consider here the distance between terminal and base station (BS), also the antenna high, base station transmitter power On average, the signal ...



[Get a quote](#)



Networks Chapter 6 Flashcards , Quizlet

A wireless host is "associated" with a base station when: 1) The host is within the wireless communication distance of the base station 2) The host uses that base station to relay data ...

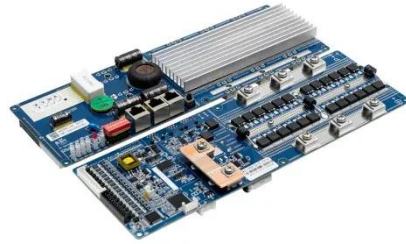
[Get a quote](#)

Distance Limitations when using CORS Networks and GNSS ...

In this paper, the influence of the

distance, between a monitor receiver and the reference station, to the achieved accuracy is investigated. The study involves measurements by single and dual ...

[Get a quote](#)



The Common Misconceptions Around Base and ...

With a base and rover system, your rover is accurate relative to the base. Your base station is not receiving any RTK corrections; therefore, its ...

[Get a quote](#)

Contact Us

For catalog requests, pricing, or partnerships, please visit:
<https://www.zenius.co.za>