

## SolarMax Energy Systems

# What is the charging voltage of a 36v lithium battery pack



## Overview

---

Can anyone advise on charging a 36 volt lithium battery?

The fully charged voltage of a nominally 36 volt lithium battery is 41 volts and the cutoff is set for about 31/32 volts. There is nothing wrong with charging to 41 volts. The fault is not yours, it's only that the voltage is collapsing under load, possibly due to failing cells in the battery.

How many volts should a 36 volt battery charge?

A 36-volt battery should charge between 13 and 15 volts. If it is charging at below 13 volts, then the battery may not be getting fully charged and will require more frequent recharging. Conversely, if it is charging at above 15 volts, then the battery may be overcharging and could be damaged as a result.

How many volts does a lithium ion battery take?

Lithium-ion (Li-ion) batteries have different charging requirements compared to lead-acid ones. The ideal voltage for Li-ion batteries is generally around 4.2 volts per cell, which translates to approximately 75.6 volts for a full charge in a 36V configuration.

How many volts should a battery charge?

Each type has its own specific requirements to ensure optimal charging and longer battery life. For lead-acid batteries, the recommended charging voltage is typically around 2.3 volts per cell or about 41.4 volts for a fully charged 36V battery pack. It's important not to overcharge these batteries as it can cause damage and reduce their lifespan.

Why should I charge my 36V battery properly?

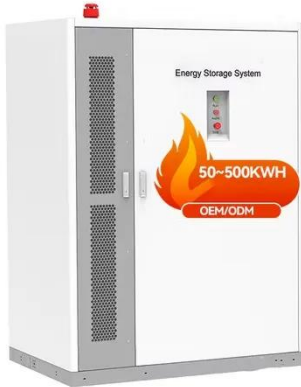
Furthermore, proper charging also maximizes the lifespan of your 36V battery. Consistently using incorrect voltages during charge cycles can accelerate degradation and shorten the overall lifespan of your device's power source.

How long does a 36V battery take to charge?

A 36v battery can take anywhere from 4-6 hours to charge. The time it takes to charge a battery depends on the amp hours of the battery and the voltage of the charger. Most 36v batteries have between 10 and 20 amp hours. How Long Does It Take to Charge a 36V Lithium Battery?

## What is the charging voltage of a 36v lithium battery pack

---



### How to Charge a 36V Lithium Battery Without Using a ...

A proper charger is designed to provide the correct voltage (typically 42V for a 36V battery) and current for lithium-ion cells, preventing ...

[Get a quote](#)

## What Should Voltage Be On 36 Volt Golf Cart Batteries?

Recommended Voltage Levels for 36 Volt Golf Cart Batteries For a 36 volt battery pack, a fully charged state typically registers around 38.2 volts. While this ...



[Get a quote](#)



### 36V Battery Voltage Chart

A 36V nominal rating indicates the battery's average operating voltage, but actual voltage fluctuates between 30-42V depending on charge state. For example, a fully charged lithium ...

[Get a quote](#)

## 36V Lithium Battery Pack: Specifications and Uses

What Are the Charging Requirements for 36V Lithium Batteries? Charging requirements typically include: A standard charge voltage around 42-43.8 volts. Current ...

[Get a quote](#)



## How to Charge a 36V Battery

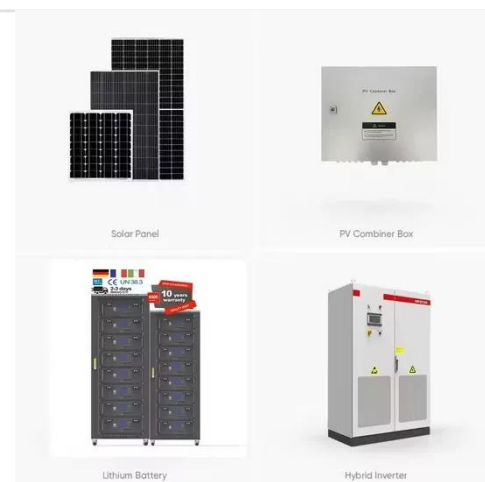
36V Battery Charging Fundamentals  
Voltage and Chemistry Compatibility  
Charging a 36V battery correctly starts with understanding its chemistry. Lead-acid, lithium-ion (Li-ion), ...

[Get a quote](#)

## What Is A 36 Volt Li Ion Battery?

Technically, 36V Li-ion packs use 10S configurations (3.6V/cell) to hit 36V nominal, with operating ranges from 30V (discharged) to 43.2V (charged). Pro Tip: Always verify the ...

[Get a quote](#)



## What Should a 36V Battery Charge at? (In-depth Analysis)

Most 36V batteries require a charging voltage of between 42 and 58 volts. However, some batteries may require a

higher CCA or lower voltage, so it's always best to check your ...

[Get a quote](#)



## 36V Lithium Batteries: Ultimate Guide

What Are 36V Lithium Batteries? Lithium batteries are rechargeable power sources that rely on lithium ions moving between the anode and cathode to ...

[Get a quote](#)



## Battery State of Charge Chart

After the battery or battery pack has been fully charged, disconnected from the battery charger, and let stand for an hour or longer, then its state of charge Voltage can be accurately ...

[Get a quote](#)

## What Should a 36V Battery Charge at? (In-depth Analysis)

A 36V lithium-ion battery typically has a nominal voltage of 36 volts, with a fully charged voltage ranging from about 42

to 43.8 volts and a recommended safe minimum ...

[Get a quote](#)



## How To Charge A 36V Lithium Battery?

To charge a 36V lithium battery, use a dedicated 36V lithium charger with CC-CV (constant current-constant voltage) protocols. Set termination voltage to 42V (for LiFePO4) or ...

[Get a quote](#)

## What should a 36 volt golf cart read when fully charged?

When it comes to a 36-volt golf cart battery, it's important to understand that the voltage reading can vary depending on the battery's charge level. Typically, a fully charged 36-volt battery ...

[Get a quote](#)



## What voltage should a 36V battery be charged at?

When it comes to charging a 36V battery, the recommended voltage can vary depending on the type of battery



you are dealing with. Each type has its own specific ...

[Get a quote](#)



---

## How to Choose and Maintain 36V Golf Cart Batteries

What is a 36V golf cart battery and how does it function? A 36V golf cart battery system typically consists of six 6-volt batteries connected in ...

[Get a quote](#)



---

## What is the Maximum Charge Voltage for a 36V Battery?

The maximum charge voltage for a fully charged 36V lithium battery is typically around 42-43 volts. This voltage ensures that each individual cell reaches its optimal charge ...

[Get a quote](#)



---

## Optimal Charging Voltage for a 36V Battery: Maximizing ...

What is the optimal charging voltage for a 36V battery? A 36V lithium-ion battery typically requires a charging voltage of



41.4V-42.5V (3.45V-3.55V per cell) for balanced ...

[Get a quote](#)



## Understanding the Voltage Threshold of a 36V Lithium-Ion Battery

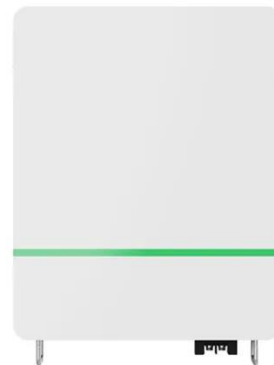
A 36V lithium-ion battery typically has a nominal voltage of 36 volts, with a fully charged voltage ranging from about 42 to 43.8 volts and a recommended safe minimum ...

[Get a quote](#)

## What Is the Fully Charged Voltage of a 36V Lithium Battery?

The fully charged voltage of a 36V lithium battery typically reaches approximately 42 volts to 43.8 volts, depending on the specific battery chemistry and manufacturer ...

[Get a quote](#)



## How to Charge a Li-Ion Battery Correctly and Safely



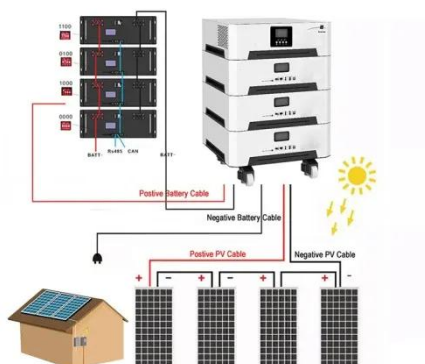
The table shown above demonstrates the approximated volumes when charged to various voltage thresholds by using and with no saturation charge. (See also BU-808: How to ...

[Get a quote](#)

## What is the charging voltage for a 36V golf cart?

The charging voltage for a 36V golf cart battery depends on its chemistry. For lithium iron phosphate (LiFePO<sub>4</sub>) batteries, the standard charging voltage is 43.8V (12-cell ...

[Get a quote](#)



## Can I use a 42V charger on a 36V battery?

You should not use a 42V charger on a 36V battery because the higher voltage can overcharge and damage the battery, reducing its lifespan or causing safety risks. ...

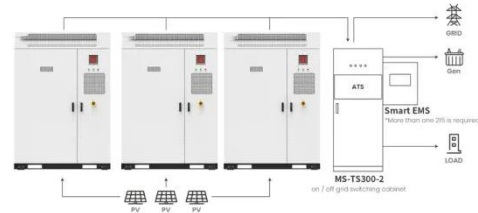
[Get a quote](#)

## 36V LiFePO<sub>4</sub> Cell Charge and Discharge Voltage Guide

The recommended charging voltage for a 36V LiFePO<sub>4</sub> battery pack is between 42.0V and 43.8V. Charging within this

range ensures the ...

[Get a quote](#)



#### Application scenarios of energy storage battery products



### Ultron 36V 10AH Lithium-ion Battery Pack, Made with Original 3c ...

Long-lasting power: With a capacity of 10Ah, this 36v Lithium ion battery pack can provide long-lasting power for extended periods of use. Built-in safety features: The battery pack is ...

[Get a quote](#)

## Contact Us

For catalog requests, pricing, or partnerships, please visit:  
<https://www.zenius.co.za>