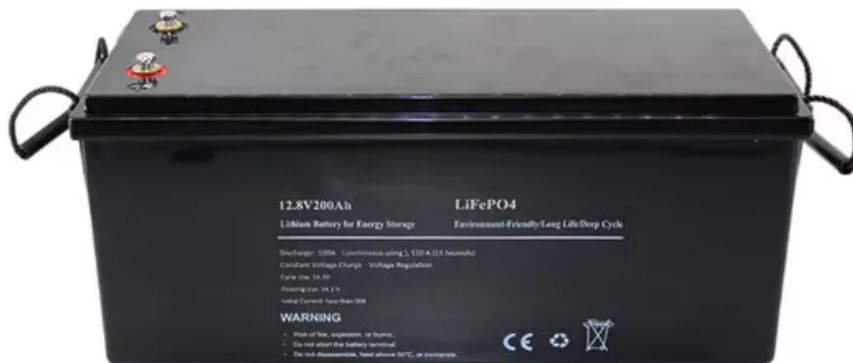


## SolarMax Energy Systems

# What is the area of standard rooftop photovoltaic panels



**LFP 12V 200Ah**

## Overview

---

A typical home solar panel is about 3 feet wide by 5.5 feet long, occupying an area of roughly 17.5 square feet (sq ft). On average, the amount of required roof space for a set of home solar panels is between 300 sq ft and 500 sq ft total. How many solar panels can you put on a roof?

There is no standardized chart that will tell you, for example, “A typical 300-watt solar panel is this long and this wide.” If you want to calculate how many solar panels you can put on your roof, you will obviously need to know the size of a solar panel. Example: 5kW solar system is comprised of 50 100-watt solar panels.

What is the size of a rooftop solar system?

The size of a rooftop solar system refers to the total power-generating capacity of all the solar panels, measured in kilowatts (kW). The system size depends on the number of solar panels and the rated capacity of the panels. System size is measured in kilowatts (kW). One kilowatt (1 kW) = 1000 Watts.

How many square feet does a home solar panel occupy?

A typical home solar panel is about 3 feet wide by 5.5 feet long, occupying an area of roughly 17.5 square feet (sq ft). On average, the amount of required roof space for a set of home solar panels is between 300 sq ft and 500 sq ft total.

What are the different sizes of solar panels?

There are 3 standardized sizes of solar panels, namely: 60-cell solar panels size. The dimensions of 60-cell solar panels are as follows: 66 inches long, and 39 inches wide. That’s basically a 66×39 solar panel. But what is the wattage?

That is unfortunately not listed at all. 72-cell solar panel size.

How much roof area does a 15kW photovoltaic power plant need?

If you want to install a 15KW photovoltaic power plant, it will require approximately 100 square meters of roof area. If we install a 15KW household photovoltaic power plant, the number of high-power solar panels and low-power solar panels used:.

What is a rooftop solar system?

A rooftop solar system comprises of: a) Solar Panels/ Modules – The most important component of a rooftop system are solar panels. They are the nucleus of the system and everything revolves around them. Solar modules comprise almost 50% of the total cost of the system.

## What is the area of standard rooftop photovoltaic panels

---



### Research status and application of rooftop photovoltaic Generation Systems

This study reviews research publications on rooftop photovoltaic systems from building to city scale. Studies on power generation potential and overall carbon emission ...

[Get a quote](#)

### Structural Requirements for Solar Panels -- Exactus ...

Rooftop Solar Configurations Rooftop solar installations are an efficient way to harness solar energy for residential or commercial buildings. ...

[Get a quote](#)



### What is Rooftop Solar - Components, Types, Benefits, Size & Costs

1 standard solar panel area requires an area of 0.56 square meters. It is very important to first know your energy requirement, the type of appliances that can run through a rooftop solar ...

[Get a quote](#)

## What is Rooftop Solar - Components, Types, ...

1 standard solar panel area requires an area of 0.56 square meters. It is very important to first know your energy requirement, the type of appliances that

...



[Get a quote](#)



## Solar Photovoltaic: SPECIFICATION, CHECKLIST AND GUIDE

For builders that desire to meet the elements of these specifications but are constructing multifamily buildings, flat roof residential structures, or buildings without attic access, or using ...

[Get a quote](#)

## Solar Panel Dimensions and Sizes: Complete Guide

There are three main sizes of solar panels to know: 60-cell, 72-cell, and 96-cell. For commercial and residential solar panels, the 60-cell and 72-cell solar

...



- ☒ LIQUID/AIR COOLING
- ☒ ON GRID/HYBRID
- ☒ PROTECTION IP54/IP55
- ☒ BATTERY /6000 CYCLES

[Get a quote](#)

## How to Install Solar Panels on a Roof: A Step-by-Step ...

A roof-mount solar system is a



photovoltaic (PV) system that generates electricity through solar panels mounted on a rooftop. Owing to their easy installation ...

[Get a quote](#)

---

## Ground-Mounted Solar Panels: What You Need To Know

Key takeaways Ground-mounted solar energy systems are an excellent alternative to standard rooftop solar installations The big benefit to ground-mounting is that it lets you position your ...



[Get a quote](#)



---

## How much area is needed for solar panel installation

A typical home solar panel is about 3 feet wide by 5.5 feet long, occupying an area of roughly 17.5 square feet (sq ft). On average, the amount ...

[Get a quote](#)

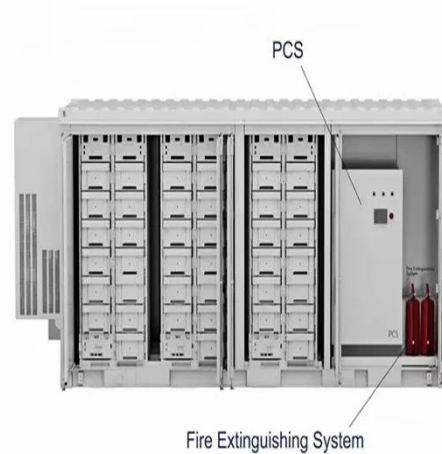
---

## Solar Power Roof Area Calculator , Roof Space ...

The table above demonstrates how varying inputs affect the required roof

area. Notably, higher panel efficiency reduces the roof area ...

[Get a quote](#)



## What are the dimensions of rooftop solar panels?

The common standard size for a residential solar panel being roughly 65 inches in height and 39 inches in width, is crucial to recognize for ...

[Get a quote](#)

## What are the dimensions of rooftop solar panels? , NenPower

The common standard size for a residential solar panel being roughly 65 inches in height and 39 inches in width, is crucial to recognize for effective installation planning on ...

[Get a quote](#)



## Standard Solar Panel Sizes And Wattages (100W-500W ...

It takes up 6.07 sq ft of area. If you have a 1000 sq ft roof, and you can use 75%

of that roof area for solar panels, you can theoretically put 123 100-watt solar panels on a 1000 sq ft roof. A ...

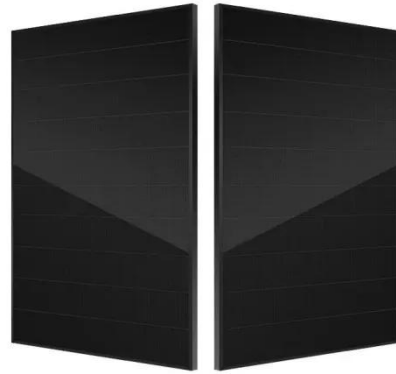
[Get a quote](#)



## Area Required

Shade-free area required at different plant capacities and panel efficiencies If a 1 kW plant with 15% efficiency panels requires 100 SF of rooftop space, then a 1 kW plant with 12% efficiency ...

[Get a quote](#)



## How to Calculate the Surface Area Required by Solar ...

Lets assume that you want to install 10 solar panels rated at 100 Watts each and having a conversion efficiency of 18%. The total power output ...

[Get a quote](#)

## How much area is needed for solar panel installation

A typical home solar panel is about 3 feet wide by 5.5 feet long, occupying an area of roughly 17.5 square feet (sq ft).



On average, the amount of required roof space for a set of ...

[Get a quote](#)



## Guidelines for the dimensions of solar panels

Overall, a standard household solar system will occupy 100-200 square meters of roof space. The system can be installed on your roof or on a floor bracket located somewhere ...

[Get a quote](#)

## Specifications and dimensions of rooftop photovoltaic panels

Performing an 8.5 kWp solar panel installation requires a rooftop space going from a little more than 300 sq. ft. to a little less than 600 sq. ft., but this is only an estimate.

[Get a quote](#)



## Solar Panel Sizes, Dimensions & Weight , Solar Choice

Standard residential solar panels contain 60 solar cells (or 120 half-cut solar cells) and typically generate anywhere from



350W to 500W of electricity. The size of these panels ...

[Get a quote](#)

## Size your solar system

One residential solar panel is often around 1.7 m<sup>2</sup> in area. A common 6.6 kW system might take up 29 - 32 m<sup>2</sup> of roof space, depending upon the rated capacity of the panels. Panels can be ...

[Get a quote](#)



## Solar Panel Sizes, Dimensions & Weight , Solar Choice

Standard residential solar panels contain 60 solar cells (or 120 half-cut solar cells) and typically generate anywhere from 350W to 500W of ...

[Get a quote](#)

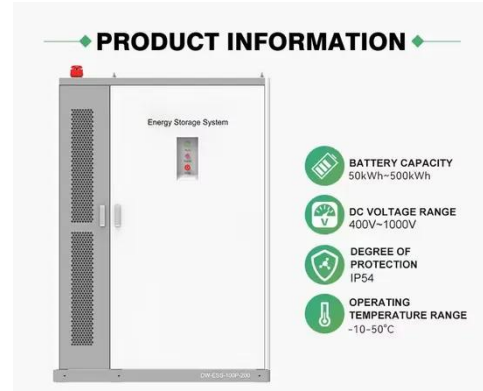
## Standard Solar Panel Sizes And Wattages (100W ...

It takes up 6.07 sq ft of area. If you have a 1000 sq ft roof, and you can use 75% of that roof area for solar panels, you

can theoretically put 123 100-watt solar

...

[Get a quote](#)



## Solar Panel Dimensions and Sizes: Complete Guide

There are three main sizes of solar panels to know: 60-cell, 72-cell, and 96-cell. For commercial and residential solar panels, the 60-cell and 72-cell solar panels size are most commonly used ...

[Get a quote](#)

## What are the Standard Sizes of Solar Photovoltaic Panels?

This article covers the standard sizes of solar photovoltaic panels and explains how to determine how many panels your solar system needs. It also helps estimate the system's capacity, ...

[Get a quote](#)



## How to Calculate the Surface Area Required by Solar Panels

Lets assume that you want to install 10 solar panels rated at 100 Watts each and having a conversion efficiency of 18%.

The total power output of the solar system can be ...

[Get a quote](#)



## Design Guide for Rooftop Solar

Roof mounted PV Solar Panels are typically supported by racking systems which come in two basic forms. The first is a mechanically fastened system and the second, the more common of ...

[Get a quote](#)



## Contact Us

For catalog requests, pricing, or partnerships, please visit:  
<https://www.zenius.co.za>