

## SolarMax Energy Systems

# What battery to use when connecting to the inverter



## Overview

---

Inverters typically use lead-acid batteries, known for their reliability and cost-effectiveness. UPS systems might use similar batteries, but some opt for lithium-ion variants due to their compact size and longer life. Do inverters need batteries?

For most residential and small commercial setups, the traditional battery and power inverter combo is the preferred choice to ensure continuous power supply during blackouts. So, while some inverter types do not require batteries, if your priority is uninterrupted backup power, investing in a quality battery in inverter system is essential.

Do inverters and batteries need to match?

The inverter and batteries must match in terms of voltage, capacity, and power output. If you are using a 12V battery, then the input voltage of the inverter must match the battery voltage. If the specifications of the battery and the inverter do not match, the system will not operate stably and may even damage the equipment.

Can Inverter Batteries be connected in series or parallel?

Depending on the desired voltage and capacity, you can connect the inverter batteries in series or parallel. When connecting in series, connect the positive terminal of one battery to the negative terminal of the next battery, and so on.

Why do I need to connect a battery to my inverter?

Properly connecting the battery to your inverter is essential for ensuring its efficient and reliable operation. However, issues with the battery connection can sometimes arise, causing problems such as power loss or device malfunction. In this article, we have discussed various troubleshooting tips to help you diagnose and resolve these issues.

What type of battery does an inverter use?

Inverters typically use lead-acid batteries, known for their reliability and cost-effectiveness. UPS systems might use similar batteries, but some opt for lithium-ion variants due to their compact size and longer life. Knowing your battery type helps in choosing the right connection method and maintaining overall system health.

How to connect inverter to battery?

A key safety measure in how to connect inverter to battery is the installation of fuses or circuit breakers to protect against overload or short circuits. Properly tightening the terminal connections to ensure a stable electrical flow without over-tightening. Recommend using a multimeter to check the voltage and verify that connections are secure.

## What battery to use when connecting to the inverter

---



### Can I Attach My Small Inverter Directly to the Battery?

Before connecting any inverter to a battery, you must verify their compatibility--a critical step many overlook. The battery's voltage (12V, 24V, or 48V) must match the inverter's

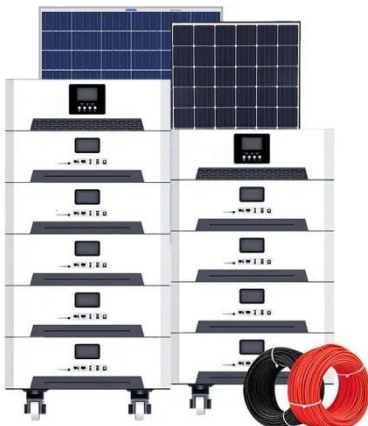
...

[Get a quote](#)

### How to Connect a Large or Small Inverter to a Battery

The most common way to connect the inverter to the battery is used in vehicles that have frames that are electrically connected to the ...

[Get a quote](#)



### Power Inverter: Can I Hook It Directly to the Battery for Safe

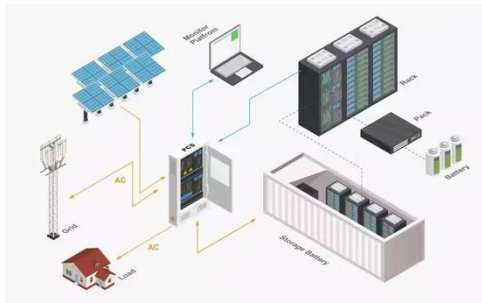
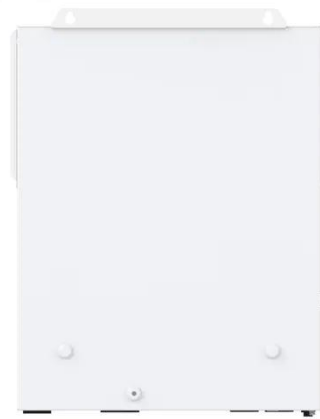
To choose the right size battery for your power inverter, match the battery's capacity to the inverter's power needs. Generally, larger inverters require batteries with higher amp ...

[Get a quote](#)

## Connecting an inverter battery: a visual guide

To begin with, you need to connect the inverter to the AC mains. This connection allows the inverter to charge the battery when the power is available, ensuring a constant supply of ...

[Get a quote](#)



## How to Safely Connect a Battery to an Inverter: A ...

Learn how to safely connect your batteries to your inverter with our guide. Avoid common wiring mistakes to optimize performance and extend ...

[Get a quote](#)

## How to Wire Solar Panels to Inverter: Complete Guide

How to Connect Solar Panels to Home Inverter The type of inverter used for solar panels depends on how it is connected to them. You can use ...

[Get a quote](#)



## How to Wire an Inverter to Your House? A Fast and Easy Guides

If you're planning to install an inverter in your house, you need to read this article



as it breaks down the procedure into more intelligible bits. You will also learn some safety tips ...

[Get a quote](#)

## Solar Panel to Battery & Inverter Connection Guide

Unlock the power of solar by mastering how to connect solar panel to battery and inverter diagram. Your step-by-step guide for efficient setup in ...

[Get a quote](#)



## How to Connect an Inverter to a Battery: Step-by-Step ...

Learn how to safely and efficiently connect an inverter to a battery with our step-by-step guide. Includes brand-specific tips for Solis, Deye, Megarevo, SRNE, ...

[Get a quote](#)

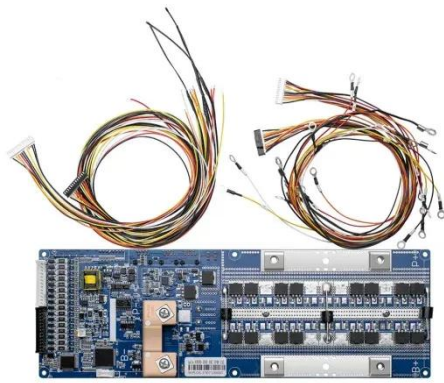
## Inverter Battery Connection: Essential Tips For Safe And Efficient

A well-connected inverter battery ensures that power flows efficiently,



reducing energy loss and preventing potential hazards. Incorrect connections can lead to malfunctions, reduced battery ...

[Get a quote](#)



## How to avoid spark on when connecting my inverter to my batteries

Hi I want to avoid the spark that happens when I connect my inverter to my batteries. I have seen some people say to use a resistor for a few seconds but I am not sure ...

[Get a quote](#)

## Charging Battery While Connected To Inverter ...

Can I charge a battery while it's connected to an inverter? in short, the answer is Yes, you can charge a battery while using an inverter. but make ...

[Get a quote](#)



## How to Connect Two Batteries in Parallel to an Inverter?

In home or commercial applications, connecting batteries to an inverter is a



common task. Connecting two batteries in parallel to an inverter can increase the system's ...

[Get a quote](#)

## How to Connect an Inverter to a Battery: Step-by-Step ...

Properly connecting your inverter to a battery is essential for a reliable and efficient power backup system. By following the steps outlined in this guide, ...



[Get a quote](#)

### Lithium Solar Generator: \$150



## How to Safely Connect a Battery to an Inverter: A Step-by-Step ...

Learn how to safely connect your batteries to your inverter with our guide. Avoid common wiring mistakes to optimize performance and extend system life.

[Get a quote](#)

## How to connect inverter to battery: a step-by-step guide for safe ...



Common battery types include lead-acid, AGM, and lithium-ion batteries, all of which are integral to understanding how to connect inverter to battery for various use cases.

[Get a quote](#)



## Ultimate Guide to Battery in Inverter: Choose & Maintain Right

Think of the battery as the fuel tank. The inverter might do the converting, but without a charged battery, there's nothing to convert. Whether you're dealing with frequent outages or ...

[Get a quote](#)

## How Do I Connect My Second Battery to My Inverter?

3. Connect the remaining positive terminal of the first battery to the positive terminal of the inverter, and the negative terminal of the second ...

[Get a quote](#)



## Connecting Multiple Batteries to an Inverter: Easy Guide

Need more battery capacity on your inverter? Let's look at how to add more

batteries and how many batteries you can connect to an inverter.

[Get a quote](#)



## How to connect inverter to battery: a step-by-step ...

Common battery types include lead-acid, AGM, and lithium-ion batteries, all of which are integral to understanding how to connect inverter to ...

[Get a quote](#)

Lower cost  
larger system

20Kwh

30Kwh



**Verified** Supplier



## How to Connect Power Inverter to Car Battery

Connecting a power inverter to a car battery is a straightforward process that allows you to power devices while on the road. By using a power inverter, you can convert your car's ...

[Get a quote](#)

## How to Connect an Inverter to a Battery: Step-by-Step Guide for ...

Properly connecting your inverter to a battery is essential for a reliable and

efficient power backup system. By following the steps outlined in this guide, you can ensure a safe and seamless setup.

[Get a quote](#)



## How to Connect Solar Panel to Battery and Inverter for Efficient Energy Use

Unlock the power of renewable energy with our comprehensive guide on connecting solar panels to a battery and inverter. Discover the advantages of solar energy, ...

[Get a quote](#)

## How to Connect an Inverter to a Battery Bank? - ...

Connecting an inverter to a battery bank is a crucial step in setting up a reliable and efficient power system. Whether you're planning to use an ...

[Get a quote](#)



## Can I Attach My Small Inverter Directly to the Battery?

Best Inverters for Direct Battery Connection Renogy 2000W Pure Sine



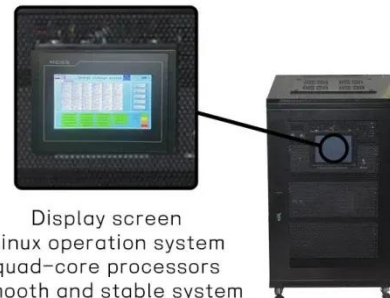
Wave Inverter (RNG-INV-2000-12V) Ideal for off-grid setups, this 12V inverter delivers clean, stable ...

[Get a quote](#)

---

## Inverter Connection with Battery - Step-by-Step Guide

In this video, we will walk you through the process of connecting an inverter to a battery for efficient power backup. Whether you're setting up a solar power system or just looking to power your



Display screen  
Linux operation system  
quad-core processors  
smooth and stable system

[Get a quote](#)



## Connect an Inverter to a Battery: DIY Guide & Integrated Solutions

Learn how to connect an inverter to a battery safely and effectively. Explore DIY options, understand essential components, and discover the benefits of integrated inverter-battery ...

[Get a quote](#)

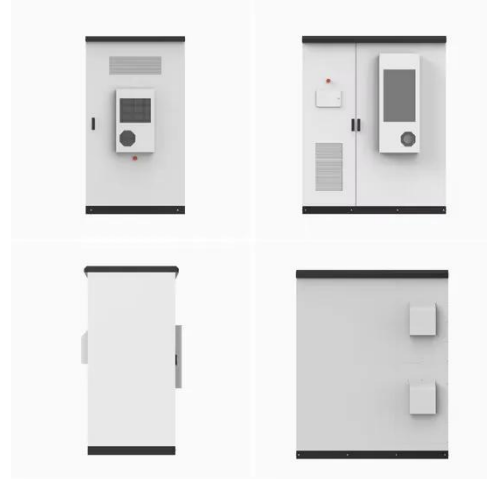
---

## How to Connect a Large or Small Inverter to a Battery

The most common way to connect the

inverter to the battery is used in vehicles that have frames that are electrically connected to the Negative terminal of the battery.

[Get a quote](#)



## Contact Us

---

For catalog requests, pricing, or partnerships, please visit:  
<https://www.zenius.co.za>