

SolarMax Energy Systems

What battery should I use with the inverter



Overview

Do inverters need batteries?

For most residential and small commercial setups, the traditional battery and power inverter combo is the preferred choice to ensure continuous power supply during blackouts. So, while some inverter types do not require batteries, if your priority is uninterrupted backup power, investing in a quality battery in inverter system is essential.

What type of battery do inverters use?

The most common battery types used with inverters are lead-acid and lithium-ion batteries. Lead-acid batteries are affordable but have a shorter lifespan compared to lithium-ion batteries, which are more expensive but offer longer cycle life and higher energy density.

Are all batteries compatible with all inverters?

However, not all batteries are compatible with all inverters. To ensure a seamless and efficient operation, it's important to choose a battery that is well-suited for your specific power inverter. Before selecting a battery, it's essential to have a good understanding of your power inverter.

What is the best backup battery for an inverter?

The best backup battery for an inverter is one that provides sufficient capacity to meet your power needs during an outage. Deep cycle batteries are a popular choice for backup power as they can provide a steady amount of power for an extended period. AGM batteries are another option that can handle high power loads and require minimal maintenance.

What type of current does an inverter battery provide?

Inverters offer small amounts of power over a long time and only inverter batteries provide AC current which is needed to power your appliances when you are off-grid. Lead-acid batteries are also used in cars, but if you want to

power your microwave, fridge, and other appliances you need a lead-acid battery specifically for use with inverters.

Do you need a battery backup for an inverter?

When it comes to using an inverter as a power source, having a reliable battery backup is essential. The type of battery you choose to use with your inverter can greatly impact the performance and efficiency of your power system. It's important to select the best battery option that suits your specific needs and requirements.

What battery should I use with the inverter



Battery Choices for Home Power Inverters: What ...

With so many battery options available, professionals emphasize selecting the type that best suits your specific inverter--whether it's an off-grid ...

[Get a quote](#)

Best Battery Options to Use with an Inverter

In conclusion, choosing the best battery option to use with an inverter is crucial to ensure a reliable and efficient power source. Whether you opt for a deep cycle battery, a ...



[Get a quote](#)



Understanding Battery Capacity and Inverter Compatibility

When pairing a 100 Ah lithium battery with a 1000 watt inverter, it is crucial to ensure compatibility to achieve optimal performance. Lithium batteries typically offer better ...

[Get a quote](#)

Batteries For Inverters (Complete Guide)

When it comes to choosing the right battery for your solar inverter, you will need to carefully consider what battery type you need, so let's take a look at what ...

[Get a quote](#)



Batteries for a 3000 Watt Inverter: A Complete Guide

Drawing 3000 watts from a 300Ah battery will run for a maximum of 1.2 hours. If you reduce your power draw to 2000 watts, you would increase your runtime ...

[Get a quote](#)

What Type of Battery Should I Use for My Inverter?

What type of battery works best for inverters? Deep-cycle batteries work best for your sine wave inverters. Here's why: They can get discharged and recharged multiple times ...

[Get a quote](#)



A Guide to Solar Inverters: How They Work & How to ...

Learn what a solar inverter is, how it works, how different types stack up, and how to choose which kind of inverter for

your solar project.

[Get a quote](#)



Which Inverter Battery Is Best (Calculated Options)

There are two kinds of batteries when it comes to powering inverters: lead-calcium batteries and lithium-ion batteries. Each battery has its ...

[Get a quote](#)



Looking for a Mini Inverter for Your Place? Choose Tata Green Battery

Looking for a compact inverter for your home? Tata Green Battery offers reliable, efficient mini inverters designed for Indian power needs and everyday convenience.

[Get a quote](#)

Mastering Inverter Batteries: Types, Selection, and Care

Inverter batteries are essential for keeping things running when the power

goes out. They store energy during electricity failures, helping homes ...

[Get a quote](#)



GRADE A BATTERY

LiFePO4 battery will not burn when overcharged, over discharged, overcurrent or short circuit and can withstand high temperatures without decomposition.



What Size Battery Do I Need for a 1000W Inverter?

To power a 1000W inverter, you typically need a battery with a minimum capacity of 100Ah if you plan to run it for about one hour. However, the actual size may vary based on ...

[Get a quote](#)

Which Inverter Battery Is Best (Calculated Options)

When looking at which inverter battery is best, you need to consider the kind of usage it will provide and when you have long periods without ...

[Get a quote](#)



Step-by-Step Guide to Select Best Inverter for Home

Find out how to choose the best inverters for home with tips on capacity, battery type, brand, and features to

ensure reliable backup during power cuts.

[Get a quote](#)



Top 10 Inverter and Battery for Home - With Reviews & Ratings

Discover the top 10 inverter and battery for home in India in 2025. Compare prices, reviews, and ratings, and find the perfect solution for uninterrupted power.

[Get a quote](#)



Calculate Battery Size For Any Size Inverter (Using Our Calculator)

What type and size of battery is best for inverter? Lead acid, gel and lithium battery, what's the difference? Keep reading and choose the best ...

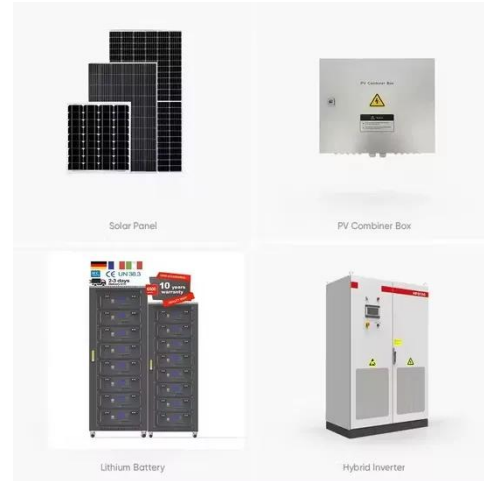
[Get a quote](#)

Batteries For Inverters (Complete Guide)

When it comes to choosing the right battery for your solar inverter, you will

need to carefully consider what battery type you need, so let's take a look at what type of inverter batteries are ...

[Get a quote](#)



Ultimate Guide to Battery in Inverter: Choose & Maintain Right

Discover how to choose, maintain, and maximize your battery in inverter for reliable backup power. Expert tips on inverter batteries, lifespan, and safety included!

[Get a quote](#)

Calculate Battery Size For Any Size Inverter (Using Our Calculator)

So I have made it easy for you, use the calculator below to calculate the battery size for 200 watt, 300 watt, 500 watt, 1000 watt, 2000 watt, 3000 watt, 5000-watt inverter

[Get a quote](#)



Which Inverter Battery Is Best (Calculated Options)



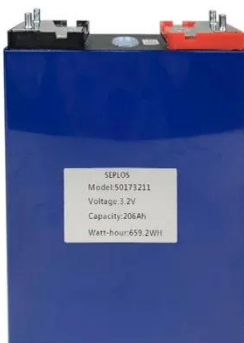
When looking at which inverter battery is best, you need to consider the kind of usage it will provide and when you have long periods without power. Your inverter choice and ...

[Get a quote](#)

Batteries For Inverters (Complete Guide)

Whether you own an RV or your home is off-grid, the Renogy 12-V deep cycle inverter battery is one of the best acid-lead batteries for inverter use on the ...

[Get a quote](#)



The Ultimate Guide to Choose Batteries for Inverter

What type and size of battery is best for inverter? Lead acid, gel and lithium battery, what's the difference? Keep reading and choose the best battery for your inverter.

[Get a quote](#)

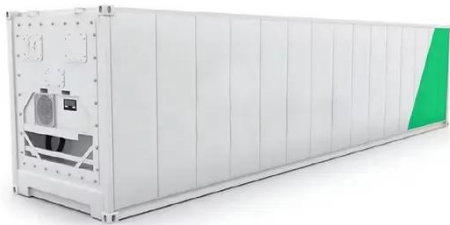
Which Battery Capacity Is Best for Inverter

The best battery capacity for your inverter depends on your power needs, but 150Ah to 200Ah is ideal for most

homes. Bigger isn't always better--efficiency matters. Many ...

[Get a quote](#)

Our Lifepo4 batteries can be connected in parallel and in series for larger capacity and voltage.



Do I Need A Fuse Between Battery And Inverter

So, the answer to do I need a fuse between battery and inverter is yes, you sure do. First of all, the inverter will work only in inverter mode ...

[Get a quote](#)

What Is the Difference Between Solar Battery and Inverter Battery ...

Discover the key differences between solar batteries and inverter batteries in our in-depth article. Learn how solar batteries optimize energy from solar panels for nighttime use, ...

[Get a quote](#)



How To Select And Use Power Inverter For Home ...

Does a 1000 watt pure sine wave inverter (for home) draw many amps?



What size inverter will work best with my appliances? What wiring sizing should I ...

[Get a quote](#)

Do LiFeP04 batteries need a specific kind of inverter?

I'm a total newbie at this, but I'm trying to decide on a 1000W pure sine wave inverter to pair with my LiFeP04 battery for my basic solar system for a van. I found a 1000W ...



[Get a quote](#)



Mastering Inverter Batteries: Types, Selection, and Care

Inverter batteries are essential for keeping things running when the power goes out. They store energy during electricity failures, helping homes and appliances stay ...

[Get a quote](#)

Say Goodbye to Power Cuts: Inverter Battery Guide

Learn how to choose the right inverter battery for your home and ensure reliable power backup during outages

with this comprehensive guide.

[Get a quote](#)



114KWh ESS



What Type of Battery Should I Use for My Inverter?

What type of battery works best for inverters? Deep-cycle batteries work best for your sine wave inverters. Here's why: They can get discharged ...

[Get a quote](#)

ISO 9001 ISO 14001 PICC RoHS CE MSDS UN38.3 UK CA IEC

Contact Us

For catalog requests, pricing, or partnerships, please visit:
<https://www.zenius.co.za>