

SolarMax Energy Systems

What are the mobile base station sites in South Sudan



Overview

What happened to displaced people in South Sudan?

While many displaced people continue to return to their homes, those remaining in these sites move freely in and out of the camps. Since 2020, the UN Mission has redesignated the sites in Juba, Wau, Bor and Bentiu into internally displaced persons (IDP) camps under the sovereign control of the government of South Sudan.

Where are the MSF camps in South Sudan?

Currently, around 180,000 people are seeking safety in six of these camps in South Sudan. Médecins Sans Frontières (MSF) is present in two – Bentiu and Malakal. Despite the challenging conditions within, for many, the alternative of being outside is worse.

How many UNMISS PoC sites are there in South Sudan?

In 2013, the UN Mission opened its gates to thousands of families fleeing conflict across South Sudan, providing them sanctuary in Protection of Civilians (POC) sites located in and around its bases all over the country. By June 2020, the total number of civilians seeking safety in six UNMISS POC sites was over 180,000.

What is life like in South Sudan's protection of civilians sites?

MSF patients and staff describe life in South Sudan's Protection of Civilians sites, where relative safety comes at the expense of exposure to life-threatening diseases and undignified living conditions.

Where is MSF hospital in South Sudan?

A woman sits next to her husband, who is a patient in the MSF hospital in the Malakal Protection of Civilians site in South Sudan, March 2019. In Malakal, which was the second most populated city before the war and one of the worst affected areas during it, MSF also runs a hospital inside the PoC where

around 30,000 people are seeking protection.

How does UN help displaced people in South Sudan?

UN provides humanitarian assistance to communities in Leer County in South Sudan following an upsurge in conflict. Photo by UNMISS (2022) While many displaced people continue to return to their homes, those remaining in these sites move freely in and out of the camps.

What are the mobile base station sites in South Sudan



List of Mobile Operators in South Sudan

Mobile operators in South Sudan play a crucial role in providing telecommunications services to the country's population. South Sudan, the youngest nation in the world, has a ...

[Get a quote](#)

Protection of Civilians sites in South Sudan , MSF

Currently, around 180,000 people are seeking safety in six of these camps in South Sudan. Médecins Sans Frontières (MSF) is present in two - Bentiu and ...

[Get a quote](#)



RSF drones target military sites in White Nile State, Sudan

July 12, 2024 (KOSTI) - The Rapid Support Forces (RSF), on Friday, launched a drone attack on several military targets in the White Nile State of southern Sudan, utilising four unmanned ...

[Get a quote](#)

In South Sudan, Protection of Civilians sites are ...

Since 2020, the UN Mission has redesignated the sites in Juba, Wau, Bor and Bentiu into internally displaced persons (IDP) camps under the ...

[Get a quote](#)



Spatial variability of outdoor exposure to radiofrequency radiation

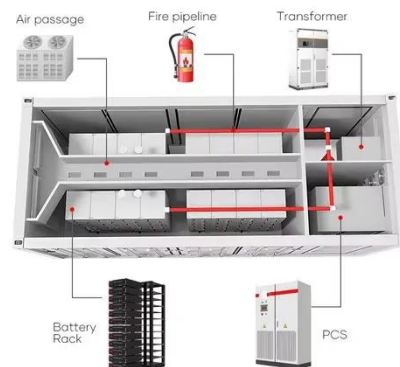
The primary goal was to classify and characterize RF radiation exposure near mobile phone antennas in Khartoum. Data collection occurred in two phases; initially in 2012 and later from ...

[Get a quote](#)

South Sudan: Justice Landscape Assessment

The Hybrid Court was envisaged as a joint endeavor by the Government of South Sudan and the African Union (AU) "to prosecute individuals bearing responsibility for violations of international ...

[Get a quote](#)



Moving Toward Mobility: Providing Protection to ...



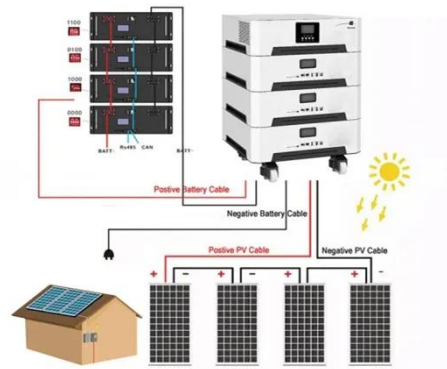
The problem of inadequate troops and civilian staff deployed to such a large country could be alleviated by a more mobile and responsive ...

[Get a quote](#)

Sudans Post , Independent news and views on Sudan and South Sudan

Sudans Post is an independent and digital-only newspaper that provides objective, in-depth coverage of Sudan and South Sudan.

[Get a quote](#)



South Sudan LTE Base Station System Market (2025-2031)

South Sudan LTE Base Station System Industry Life Cycle Historical Data and Forecast of South Sudan LTE Base Station System Market Revenues & Volume By Type for the Period 2021-2031

[Get a quote](#)



MTN switches on first tower in \$76m South Sudan project

Mobile network operator MTN has

switched on the first of 161 mobile towers to be built in South Sudan, as part of a US\$76 million project aimed at bringing connectivity and ...

[Get a quote](#)



SPLA-IO alleges attacks on cantonment sites

By Kei Emmanuel Duku Sudan People's Liberation Army-In Opposition (SPLA-IO) has accused South Sudan People's Defense Forces (SSPDF) of attacking its cantonment site ...

[Get a quote](#)

MTN deploying 250 rural sites in South Sudan with NuRAN

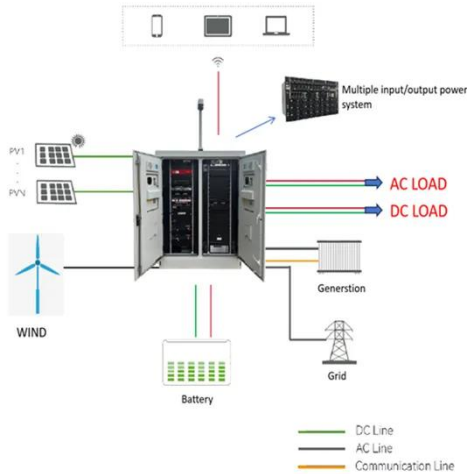
Rural communications firm NuRAN Wireless has signed a ten-year deal with MTN Group to deploy at least 250 sites across rural South Sudan.

[Get a quote](#)



MTN switches on first tower in \$76m South Sudan project

South Sudan's vice president Wani Igga turned on the first MTN base transmission station on Saturday in the



previously unconnected village of Lobonok, with a further 160 new ...

[Get a quote](#)

In South Sudan, Protection of Civilians sites are transitioning into

Since 2020, the UN Mission has redesignated the sites in Juba, Wau, Bor and Bentiu into internally displaced persons (IDP) camps under the sovereign control of the ...



[Get a quote](#)



Protection of Civilians sites in South Sudan , MSF

Currently, around 180,000 people are seeking safety in six of these camps in South Sudan. Médecins Sans Frontières (MSF) is present in two - Bentiu and Malakal.

[Get a quote](#)

B.7 / SOUTH SUDAN / 2018-2019 MOBILE / AREA-BASED ...

Phase 2 saw the handover and intensive capacity building of the community to take on their own site management duties with follow up support to be provided by the CCCM State Focal Point.

[Get a quote](#)



Moving Toward Mobility: Providing Protection to Civilians Through

The problem of inadequate troops and civilian staff deployed to such a large country could be alleviated by a more mobile and responsive approach to achieving the ...

[Get a quote](#)

Connectivity for Refugees: South Sudan Country Profile

Mobile money platforms available in South Sudan include m-GURUSH and Zain Cash. However, mobile money uptake is low, largely due to people not having enough money to send via ...

[Get a quote](#)



Annual Report 2023

United in our goal of sustainable peace and development, UNDP remains steadfast in supporting South Sudan's

transformative journey. With a new Country Programme unveiled in 2023, we ...

[Get a quote](#)



Civilians in the crosshairs as RSF escalates Sudan ...

The attacks also endanger South Sudan's economic lifeline. As a landlocked nation, it depends entirely on Sudan's pipelines and Port Sudan to ...

[Get a quote](#)



Mobile Base Stations , Wireless Communications ...

The ICS Mobile Base Station is a Wireless Communications Station designed for the rapid deployment of temporary, permanent or remote sites where a Mast, ...

[Get a quote](#)

Sudan war: Drones hit Port Sudan causing power blackout as ...

Drone strikes have hit a major power station in the Sudanese city of Port

Sudan causing a "complete power outage", the country's electricity provider said. Explosions and ...

[Get a quote](#)



South Sudan deploys first mobile court to Leer in over a decade

The Leer mobile court aims to address serious criminal cases, including murder, sexual and gender-based violence (SGBV), conflict-related sexual violence (CRSV), and forced and early ...

[Get a quote](#)

Find the nearest 3G/4G LTE mobile phone masts in ...

Ofcom hosts the Sitefinder tool on behalf of Government, which can be searched for the location and details of mobile phone base station sites ...

[Get a quote](#)



Contact Us

For catalog requests, pricing, or partnerships, please visit:

<https://www.zenius.co.za>