

SolarMax Energy Systems

Weight of double-sided double-glass modules



Overview

Are double-glass modules better than single-sided glass panels?

However, advancements in glass technology have mitigated this issue to some extent. Weight: Double-glass modules are generally heavier than single-sided glass panels due to the additional glass layer. Applications: Double-glass modules are well-suited for environments with harsh weather conditions, high humidity, or corrosive elements.

What is a double glass module?

The double glass module design offers not only much higher reliability and longer durability but also significant Balance of System cost savings by eliminating the aluminum frame of conventional modules and frame-grounding requirements. The application of double-glass modules covers multiple markets including utility, residential and commercial.

What is a dual-glass module?

Dual-glass type modules (also called double glass or glass-glass) are made up of two glass surfaces, on the front and on the rear with a thickness of 2.0 mm each. Some manufacturers, in order to reduce the weight of the modules, have opted for a thickness of 1.6 mm. DualSun has chosen to stay with a thickness of 2.0 mm for reasons explained below.

Why are double glass modules symmetrical?

Mechanical constraints on cells: the fact that the structure of the double glass modules is symmetrical implies that the cells are located on a so-called neutral line, the upper part of the module being in compression during a downward mechanical load and the lower glass surface being in tension.

How much does a dual sun module weigh?

For example, for a DualSun module with dimensions 1722 mm x 1134 mm, the weight in glass (2.8 mm) - backsheet configuration is 20.0 kg while it is 25.1

kg for bi-glass (2 x 2.0 mm), which corresponds to a weight increase of 25%.

What is the thickness of a glass module?

The thickness of the front glass generally used for this type of structure is 3.2 mm. Dual-glass type modules (also called double glass or glass-glass) are made up of two glass surfaces, on the front and on the rear with a thickness of 2.0 mm each.

Weight of double-sided double-glass modules



Double the strengths, double the benefits

While double glass modules offer numerous benefits, it's essential to consider factors such as weight and installation requirements. Advancements in manufacturing have led ...

[Get a quote](#)

Double-sided cell single-glass module

Are double-glass modules better than single-sided glass panels? mitigated this issue to some extent. Weight: Double-glass modules are generally heavier than single-sided glass panels due ...



[Get a quote](#)



D-Mini Bifacial Double Glass Module

Bifacial ratio reaches 80%, 30% more module power generation than conventional modules. Two-sided double-glazed modules, symmetrical structural design, low risk of hidden cracks. ...

[Get a quote](#)

INSTRUCTIONS FOR

PREPARATION OF PAPERS

Technical problems such as manufacturing yield, extra weight and the lack of frame support were solved by selecting a double heat-strengthened glass structure with a thickness of 2.5mm (or ...

[Get a quote](#)



What are Double Glass Solar Panels?

Whereas double-glass solar modules will experience substantially less deformation due to the greater strength provided by two layers of glass, the probability of ...

[Get a quote](#)

The Difference Between Double-glass and Single-sided Glass ...

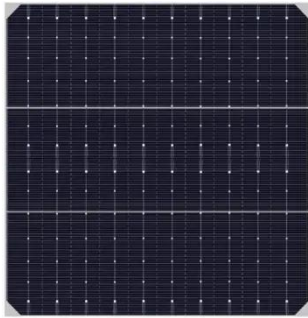
Weight: Double-glass modules are generally heavier than single-sided glass panels due to the additional glass layer. Applications: Double-glass modules are well-suited for ...

[Get a quote](#)



What are the advantages of dual-glass Dualsun modules?

For example, for a Dualsun module with



dimensions 1722 mm x 1134 mm, the weight in glass (2.8 mm) - backsheet configuration is 20.0 kg while it is 25.1 kg for bi-glass (2 x 2.0 mm), which ...

[Get a quote](#)

Weight of double-glass photovoltaic panels

Bifacial solar panels 670W - Renesola RS9-650-670MBG-E1 double glass The Renesola RS9-650-670MBG-E1 is a bifacial double-glass solar panel with a maximum power output of 670



[Get a quote](#)



72 Pcs Bifacial Double Glass Module

Module efficiency leading in industry, up to 21.7% Double Sided power generation: Double-sided rate up to 70%, additional power generation of modules is up to 25% higher than conventional ...

[Get a quote](#)

The weekend read: Double glass can spell double ...

Glass-glass modules are built to survive the toughest conditions and can deliver module lifetimes far exceeding the 20-30

years expected of ...

[Get a quote](#)



Increasing power generation: maximizing the ...

Double-sided double-glass modules can increase the power output of the module by 20-30% when the conditions are ideal. And the background reflectivity of ...

[Get a quote](#)

Mono PERC Bifacial Double Glass Photovoltaic Solar ...

EVO 6 Series Mono PERC 132 Half Cells
650W 655W 660W 665W 670W Bifacial
Dual Glass Solar Module Based on
210mm silicon wafer and 132 half-cut ...

[Get a quote](#)



bifacial solar panels DG series- Sungold

Double- glass modules are able to absorb sunlight from two directions due to their double-sided design, thus



increasing the efficiency of power generation. Under ideal conditions, double ...

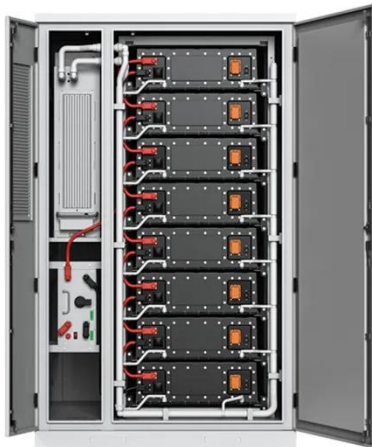
[Get a quote](#)

Transparent backplane and double-glass solar panels: ...

The transparent backplane series launched by Solardeland can control the weight of double-sided modules to about 30kg, which is easy to install, but the double-sided double ...



[Get a quote](#)



Single-glass versus double-glass: a deep dive into module ...

For instance, the transition from 3.2mm to 2.8mm for single-glass modules and 2mm for double-glass modules, and even to 1.6mm, necessitates a careful consideration of the ...

[Get a quote](#)

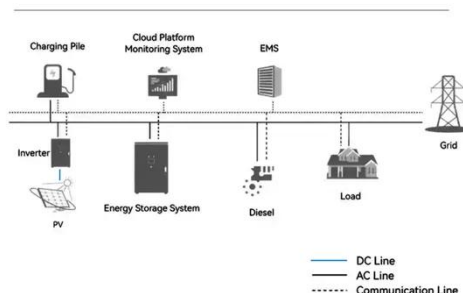
What are Double Glass Solar Panels?

For example, for a Dualsun module with

dimensions 1722 mm x 1134 mm, the weight in glass (2.8 mm) - backsheets configuration is 20.0 kg while it is 25.1 kg for bi-glass (2 x 2.0 mm), which ...

[Get a quote](#)

System Topology



bifacial solar panels DG series-Sungold

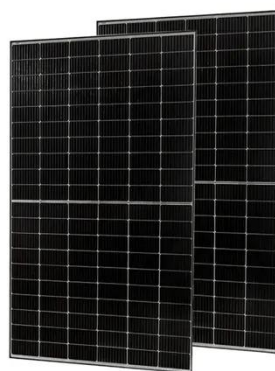
Double- glass modules are able to absorb sunlight from two directions due to their double-sided design, thus increasing the efficiency of power generation. ...

[Get a quote](#)

HJT Bifacial Double Glass 680W 690Wp 700Watt ...

EVO 6 Pro 132 Half Cells HJT 680W 685W 690W 695W 700W Bifacial Dual Glass Solar Module In order to create the ultimate cost-effective product, ...

[Get a quote](#)



The Difference Between Double-glass and Single ...

Weight: Double-glass modules are generally heavier than single-sided glass panels due to the additional glass layer.

Applications: Double ...

[Get a quote](#)



TOPCon Dual Glass 570W 580W 585W Solar Panels ...

Upgrade your project with Sunpal's N-type TOPCon bifacial double glass 555W 560W 565W 570W 575W 580W 585W solar modules at factory prices.

[Get a quote](#)



OEM service

Hot Colors:



Color can be customized
more questions just do not hesitate to contact us

LOGO Position: (Screen printing)



Single Glass Vs Double Glass Solar Panels , Best ...

Single Glass vs Double Glass Solar Panels to choose the right option for maximizing efficiency and sustainability in solar energy solutions.

[Get a quote](#)

Glass-Glass Solar Panel Technology

Glass-glass module structures (Glass Glass or Double Glass) is a technology that uses a glass layer on the back of the

modules instead of the traditional ...

[Get a quote](#)



Contact Us

For catalog requests, pricing, or partnerships, please visit:
<https://www.zenius.co.za>