

## SolarMax Energy Systems

**The inverter can be directly  
connected to 12v**



## Overview

---

Yes, you can hook a power inverter directly to a battery. Ensure the inverter's power rating is compatible with the battery's capacity. This connection supplies reliable power to your vehicle. Always prioritize safety and check the current draw to prevent any damage to the starting battery. Can a 12V battery be used as an inverter?

If you are using a 12V battery, then the input voltage of the inverter must match the battery voltage. If the specifications of the battery and the inverter do not match, the system will not operate stably and may even damage the equipment. In addition, choose the right inverter power and battery capacity for your home or commercial needs.

Can a small power inverter be plugged into a 12 volt outlet?

Some small power inverters are equipped with DC power cords with plugs that can be plugged into a 12 volt vehicle outlet. Some have a cord set that have battery clips identified as Positive (Red color) and Negative (Black color). Some small inverters have two cords supplied; one with a plug and one with battery clips. 12 Volt Outlets.

Do inverters have to be connected to a battery?

Above 200 watts of maximum power output an inverter has to be connected to a battery. This avoids fuses blowing in vehicular electric systems and the subsequent hunt for locating and replacing a blown outlet fuse. Most battery clip cables are not equipped with a fuse. Battery clips are only used for brief temporary connections to a 12 volt battery.

How does a portable inverter work?

You just connect the inverter to a battery, and plug your AC devices into the inverter . and you've got portable power . whenever and wherever you need it. The inverter draws its power from a 12 Volt battery (preferably deep-cycle), or several batteries wired in parallel.

How do you connect an inverter to a battery?

When connecting the inverter to the battery always use an overcurrent protection device, such as a fuse or circuit breaker, and use the thickest wire available, in the shortest length practical. See our Cables Page for recommendations for each of the inverters we sell.

How do you use a power inverter?

A very simple way to use an inverter for emergency power (such as during a power outage), is to use a car battery (with the vehicle running), and an extension cord running into the house, where you can then plug in electrical appliances. What size inverter should I buy?

We carry many different sizes, and several brands of power inverters.

## The inverter can be directly connected to 12v

---



### Inverter for Car: Everything You Need to Know Before You Plug In

When you connect the inverter to your cigarette lighter port or directly to the car battery, it steps up and converts that 12V DC into usable 110V or 120V AC power--depending ...

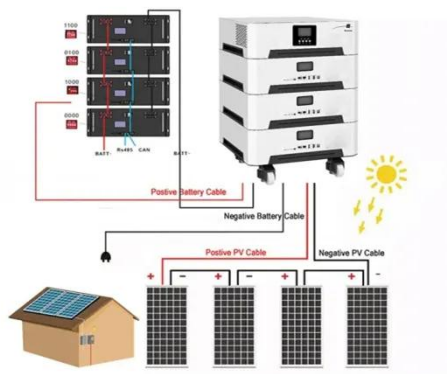
[Get a quote](#)

### Inverter for Car: Everything You Need to Know Before You Plug In

At its core, a car power inverter is a device that converts the direct current (DC) from your car's 12-volt battery into alternating current (AC), which is what most household ...



[Get a quote](#)



### How to Connect a Large or Small Inverter to a Battery

This blog answers questions about which inverters can be powered by 12V DC accessory outlets (cigarette lighter sockets) and which require wiring directly to a battery.

[Get a quote](#)

## Can I Use an Inverter to Charge a Battery

Correct Wiring: Directly connect the inverter to the battery using appropriately sized cables to ensure efficient power flow and minimize heat generation. Tip: Confirm that all ...

[Get a quote](#)



## Amazon : EFFORTWAY 1000 watt Power Inverter for Vehicles 12V ...

Widely Using Inverter: Inverter can be connected with car lighter or 12V battery directly for Emergency or solar inverter, Hurricane, Storm, Snowstorm, and Outage, cell-phone, ...

[Get a quote](#)

## Frequently Asked Questions About Power Inverters , DonRowe

You just connect the inverter to a battery, and plug your AC devices into the inverter and you've got portable power whenever and wherever you need it. The inverter draws its power from a ...

[Get a quote](#)



## Power Inverter: Can I Hook It Directly to the Battery for Safe



Yes, you can hook a power inverter directly to a battery. Ensure the inverter's power rating is compatible with the battery's capacity. This connection supplies reliable power to your ...

[Get a quote](#)

---

## Charging Battery While Connected To Inverter: The ...

Power source options How to connect the charging system Following the outlined method below, you can ensure uninterrupted power by charging your battery ...



[Get a quote](#)



## Connecting a Power Inverter Directly to a Car Battery: Pros, ...

Yes, you can connect a power inverter directly to a car battery. This method allows the inverter to draw power from the battery to supply electricity for various devices.

[Get a quote](#)

---

## Should I connect my inverter to the battery or to the ...

Depending on the intended load, many

12DC/120Vac inverters draw high amps. A small 700W microwave, for example, will easily draw 1000W. That equates to ...

[Get a quote](#)



## How to Connect a Solar Panel to an Inverter: A ...

Yes, in most cases, you can connect a solar panel directly to an inverter, but it depends on the type of inverter you have. Using an on-grid inverter, you can ...

[Get a quote](#)

## Can I Attach My Small Inverter Directly to the Battery?

Yes, you can attach a small inverter directly to a battery, but doing it safely requires understanding voltage compatibility, wire sizing, and overload risks. Many DIYers assume it's ...

[Get a quote](#)

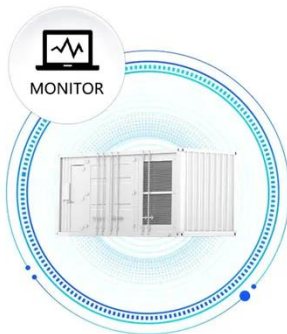


## Wiring Power Inverters In Cars: A Step-By-Step Guide

There are two main ways to wire a power inverter in a car: through a cigarette lighter or accessory socket, or directly to



SUPPORT REAL-TIME ONLINE  
MONITORING OF SYSTEM STATUS



the car battery. The first method is suitable for small ...

[Get a quote](#)

## How to Connect Solar Panels Directly to an Inverter

You can connect a solar panel directly to an inverter and run your appliances. Solar panels can be plugged directly into an inverter input. In a grid tied system, the solar panels and inverter do ...



[Get a quote](#)



## Can I connect an inverter directly to a battery?

Yes, you can connect an inverter directly to a battery bank. Once the batteries are connected correctly, simply route the positive and negative wires from the inverter to the ...

[Get a quote](#)

## How to Use Solar Inverter Without Battery: A Step-by-Step Guide ...

Explore the essentials of using solar



inverters without batteries in our comprehensive guide. Discover the benefits of cost efficiency, easy setup, and grid reliability, ...

[Get a quote](#)



## Understanding the Wiring Diagram of a 12v Inverter

If you are planning to install a 12v inverter in your vehicle or home, it is important to understand the wiring diagram to ensure safe and efficient electrical ...

[Get a quote](#)

## Should I connect my inverter to the battery or to the charge ...

...

Depending on the intended load, many 12DC/120Vac inverters draw high amps. A small 700W microwave, for example, will easily draw 1000W. That equates to approx. 77 amps @ 13Vdc. ...

[Get a quote](#)



## How to Connect a Large or Small Inverter to a Battery

This blog answers questions about which

inverters can be powered by 12V DC accessory outlets (cigarette lighter sockets) and which ...

[Get a quote](#)



---

## Contact Us

For catalog requests, pricing, or partnerships, please visit:  
<https://www.zenius.co.za>