

SolarMax Energy Systems

**Photovoltaic panels generate
electricity per square meter per
day**



Overview

Let's cut through the solar jargon - when we talk about solar panel productivity, we're essentially measuring how well these silicon rectangles turn sunshine into usable electricity. For 1m² of modern photovoltaic panels, you're looking at a daily output ranging from 0.3 kWh to 1.5 kWh. How much electricity can a solar panel produce?

A typical residential solar panel can generate between 250 to 400 watts, translating to around 350 to 600 kilowatt-hours (kWh) per year depending on various factors such as location, the amount of sunlight, and panel efficiency.

What is the output value of a solar panel?

The output value displayed is an estimate of the energy your solar panel system can generate under average conditions, considering the inputs provided. It factors in panel efficiency, inverter losses, and location-specific solar radiation to give you a realistic expectation of performance.

How much energy does a 430 watt solar panel produce?

For instance, a typical 430-watt panel can generate approximately 372 kWh of electricity each year. This measure proves especially handy for estimating how much energy production potential there is, considering the available space for installation. Solar panel power output is influenced by several factors, including:

How many kWh does a 100 watt solar panel produce?

The calculator will do the calculation for you; just slide the 1st wattage slider to '100' and the 2nd sun irradiance slider to '5.79', and you get the result: A 100-watt solar panel installed in a sunny location (5.79 peak sun hours per day) will produce 0.43 kWh per day.

How much electricity does a 5kw Solar System produce?

However, if you have a 5kW solar system (comprised of 50 100-watt solar

panels), the whole system will produce 21.71 kWh/day at this location. This might be enough to cover 100% of your electricity needs, for example.

What is the science behind photovoltaic efficiency?

Let's break down the science behind photovoltaic efficiency. Under optimal conditions (5 peak sun hours): At noon under direct sunlight: *Note: $1\text{m}^2 = 10.76\text{ sq.ft}$; values rounded for clarity* 1. Tandem Solar Cells Multi-layer designs absorbing full sunlight spectrum: Lab efficiency reached 39.7% (2023 data), projected for commercialization by 2030.

Photovoltaic panels generate electricity per square meter per day



Solar Irradiance

The irradiance calculator will then show monthly figures showing the average kWh per square meter per day for energy at your location. You can multiply this irradiance figure by the ...

[Get a quote](#)

Solar Panel Output per Square Meter: Efficiency ...

Solar panels have become a cornerstone of renewable energy, but many wonder: How much power can a single square meter of solar panels actually produce?

...

[Get a quote](#)



Solar Energy Per Square Meter: How Much Power ...

Solar energy per square meter refers to the amount of solar radiation impacting a specific area, measured in kilowatts per square meter ...

[Get a quote](#)



How Many kWh Does A Solar

Panel Produce Per Day?

How much kWh does a solar panel produce? The amount of energy generated by any solar panel depends heavily on the irradiance for the panel's location measured in kilowatt-hours per ...

[Get a quote](#)



How much Space do I need for Solar Panels? UK Guide 2025

Find out how much electricity you can generate per square foot or meter of roof space with solar panels in the UK. Click to know more.

[Get a quote](#)



How To Calculate Solar Panel Output? - Glyde Solar

The amount of electricity that the solar panel produces under perfect conditions (known as peak sun), also known as "rated capacity" or 'rated output,' is 1,000 watts (or 1 kW) of sunshine per ...

[Get a quote](#)



Solar Panel Output Calculator , Get Maximum Power ...

Welcome to the Solar Panel Output Calculator! This tool is designed to help you estimate the daily, monthly, or



yearly energy output of ...

[Get a quote](#)

Solar Panel Output: How Much Power Does a Solar ...

Learn how much electricity is produced by a solar panel, what factors affect solar panel output, and how many panels you need to power ...

[Get a quote](#)



How Much Electricity Can 1 Square Meter of Solar Panels ...

For 1m² of modern photovoltaic panels, you're looking at a daily output ranging from 0.3 kWh to 1.5 kWh. But why such a wide range? Stick with me - this solar story has more twists than a ...

[Get a quote](#)

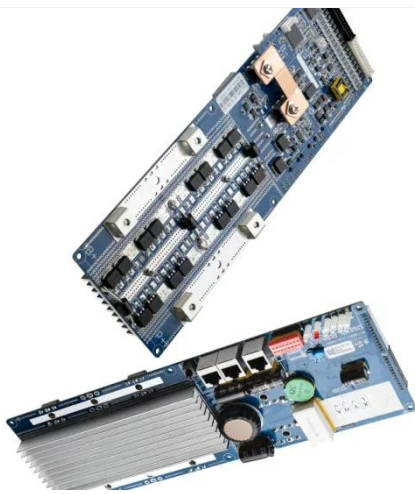
Solar Panel kWh Calculator: kWh Production Per Day, ...

Solar Output = Wattage × Peak Sun Hours × 0.75 Based on this solar panel



output equation, we will explain how you can calculate how many kWh per day ...

[Get a quote](#)



How Much Electricity Do Solar Panels Produce? Find ...

When it comes to solar panel output per square meter, the numbers can be quite revealing. On average, a solar panel produces about ...

[Get a quote](#)

Solar Power per Square Meter Calculator

A solar power per square meter calculator takes details regarding these factors and then gives the accurate output generated by the solar panel per square meter.

[Get a quote](#)



How much electricity does solar power generate per square meter

To understand the impact of these efficiency ratings on electricity



generation, consider a typical scenario where a one square meter solar panel is installed in an area that ...

[Get a quote](#)

How Much Electricity Can a Solar Panel Generate? A ...

A solar panel's electricity generation depends on factors like wattage, efficiency, sunlight exposure, temperature, and location. A 350W panel typically produces 1.75 kWh daily, ...



[Get a quote](#)



How much energy does a solar panel produce: per year, per day, ...

Wondering how much energy does a solar panel produce per day, per year, or per hour? Or perhaps, how much energy does a solar panel produce per square foot or square ...

[Get a quote](#)

How Much Energy Do Solar Panels Produce? , Axia ...

Solar Panel Output per Day Use this

formula to determine how much energy your panels can produce every day (measured in kWh): The size of a solar panel ...

[Get a quote](#)



How much energy does a solar panel produce: per year, per day, per ...

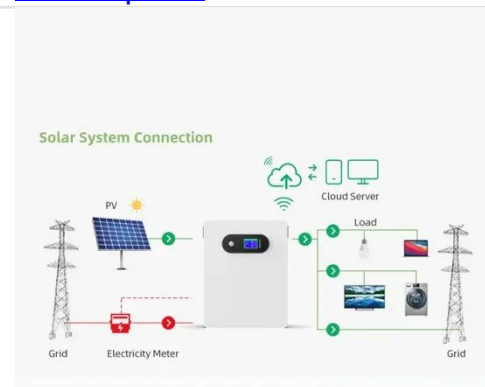
Wondering how much energy does a solar panel produce per day, per year, or per hour? Or perhaps, how much energy does a solar panel produce per square foot or square ...

[Get a quote](#)

Solar Panel Watts Per Square Meter Explained

Compare solar panels to see which generates most electricity per square meter. A higher W/m value means a solar panel produces more power from a given area. This can help you ...

[Get a quote](#)



How Many kWh Does A Solar Panel Produce Per Day?

Solar panels can produce quite a lot of



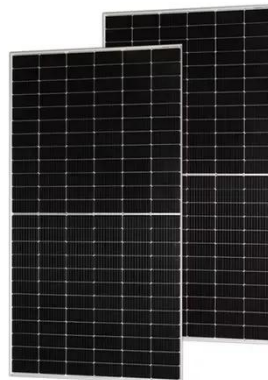
electricity. It's quite interesting to see exactly how many kWh does a solar panel produce per day. We will do the math, and show you how you can do ...

[Get a quote](#)

US Solar Insolation Maps

Since the typical modern solar panel is about 19% - 21% efficient, you will get about 1200 watts per square meter of panel. So, if the map says that you live ...

[Get a quote](#)



How Much Electricity Do Solar Panels Produce? Find Out Here

When it comes to solar panel output per square meter, the numbers can be quite revealing. On average, a solar panel produces about 186 kWh of electricity per square meter ...

[Get a quote](#)

How Much Energy Does A Solar Panel Produce?

Most residential panels in 2025 are rated 250-550 watts, with 400-watt models becoming the new standard. A 400-watt

panel can generate roughly 1.6-2.5 kWh of energy ...

[Get a quote](#)



Peak Sun Hours Calculator, Definition, Maps, and Data

For instance, one Peak Sun Hour means getting 1 kilowatt-hour of energy per square meter (1 kWh/m² or 1,000 Wh/m²). In the context of solar energy systems, the daily Peak Sun ...

[Get a quote](#)

Solar Panel Output Calculator , Get Maximum Power Output

Welcome to the Solar Panel Output Calculator! This tool is designed to help you estimate the daily, monthly, or yearly energy output of your solar panel system in kilowatt ...

[Get a quote](#)



How Much Electricity Can 1 Square Meter of Solar Panels Generate ...

For 1m² of modern photovoltaic panels,



you're looking at a daily output ranging from 0.3 kWh to 1.5 kWh. But why such a wide range? Stick with me - this solar story has more twists than a ...

[Get a quote](#)

Solar Panel Watts Per Square Meter Explained

Compare solar panels to see which generates most electricity per square meter. A higher W/m value means a solar panel produces more power from a given ...

[Get a quote](#)



Solar Panel Output per Square Meter: Efficiency Factors & Future ...

Solar panels have become a cornerstone of renewable energy, but many wonder: How much power can a single square meter of solar panels actually produce? Let's break down the ...

[Get a quote](#)

Contact Us

For catalog requests, pricing, or partnerships, please visit:

<https://www.zenius.co.za>