

SolarMax Energy Systems

Photovoltaic panel roof load standard



Overview

Find out how the ASCE 7 standard affects wind load, seismic load, and tornado load considerations for solar photovoltaic (PV) systems.

The 2016 edition of ASCE 7 has been in effect for about three years. It has three more years remaining before the standard is superseded by.

The 2022 edition of ASCE 7 includes an update to Section 13.6.12 that says, "The solar panels shall not be considered as part of the load path that resists the interconnection force unless the panels have been evaluated or tested for such loading." This new.

Research by the Structural Engineers Association of California (SEAOC) formed the basis for key provisions of ASCE 7-16. See the following white papers for research on seismic design, wind design, and gravity design. They are essential companions to ASCE.

Cain identified several code development issues for SEAC to monitor. Strong guidance exists for low-profile systems on low-slope roofs. However, Cain is keeping an eye on the edge factor used in wind design. (ASCE 7-16 Section 29.4.3) He said the criteria.

It's measured in pounds per square foot (psf) and typically falls between 15-30 psf for most residential roofs. This capacity includes both dead loads (permanent weight) and live loads (temporary weight like snow, people, or equipment).What is a solar panel roof load calculator?

A solar panel roof load calculator can help you determine the size and weight of solar panels your roof can accommodate. This article explains some of the core factors determining whether a roof can support a solar system and provide a formula to determine your roof load.

Does a roof support solar photovoltaic panels or modules?

The structure of a roof that supports solar photovoltaic panels or modules shall be designed to accommodate the full solar photovoltaic panels or modules and ballast dead load, including concentrated loads from support frames in combination with the loads from Section CS507.1.1.1 (IBC

1607.13.5.1) and other applicable loads.

Why should you use accurate solar panel roof load calculations?

In addition, you want to ensure that you limit your costs on solar panels while also optimizing the energy output of your solar panels. Accurate solar panel roof load calculations can ensure that your investment will pay off.

How much does a rooftop solar panel weigh?

Their weight is a significant factor that can help determine whether a rooftop can handle a solar panel installation. On average, according to solar experts, the mounting equipment and solar panels themselves weigh around 40 points for residential modules, ranging between 33-50 pounds depending on the manufacturer.

Can PV panels be installed on a new roof?

For example, some jurisdictions in CA and CO now require PV panels to be installed on certain new roof structures. The primary code used by structural engineers in the determination of applicable loads on buildings is ASCE 7: Minimum Design Loads for Buildings and Other Structures which is adopted by reference in the IRC and IBC.

Can a roof deck support a photovoltaic panel system?

Structures with open grid framing and without a roof deck or sheathing supporting photovoltaic panel systems shall be designed to support the uniform and concentrated roof live loads specified in Section CS507.1.1.1 (IBC 1607.13.5.1), except that the uniform roof live load shall be permitted to be reduced to 12 psf (0.57 kN/m²).

Photovoltaic panel roof load standard



Solar Panel Dimensions & Weight in Australia: The Ultimate Guide

Understanding the dimensions and weight of solar panels in Australia is essential when installing a new system. Learn about solar panel sizes in this article.

[Get a quote](#)

Photovoltaic panel roof load standard

The structure of a roof that supports solar photovoltaic panels or modules shall be designed to accommodate the full solar photovoltaic panels or modules and ballast dead load, including ...



[Get a quote](#)



Rooftop Solar Panel Attachment: Design,

If an array is to be attached to a standing seam metal roof that is yet to be installed, the loads on the PV panels and roof panels, and the load path from the PV panels to the concealed clips, ...

[Get a quote](#)

Solar Panel Roof Requirements: What You Need to Know

Discover essential roof requirements for solar panels. Learn about pitch, load capacity, and materials to ensure your home is ready for a solar energy system.

[Get a quote](#)



Solar Panel Roof Requirements For Installation (2023 Guide)

Wondering what the roof requirements are to get solar panels? Check out our official 2022 guide for solar panel roof requirements!

[Get a quote](#)

Understanding Roof Load Capacity for Solar Panels

Building codes generally require that a roof has a minimum live load capacity of 20 pounds per square foot. This is in addition to the capacity ...

[Get a quote](#)



Q & A Technical

To determine if a truss can withstand the load of a solar panel, add the value of the panel to the maximum top chord dead load capacity. If a panel can be

applied to a con- ventionally framed ...

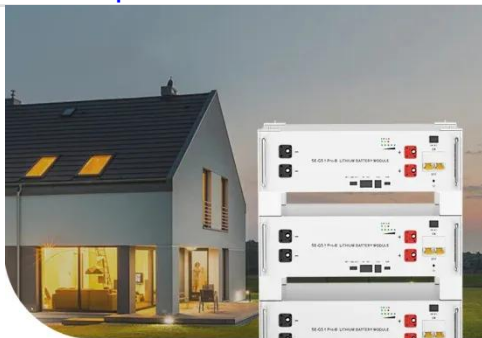
[Get a quote](#)



Solar Panel Roof Requirements: What You Need to ...

Discover essential roof requirements for solar panels. Learn about pitch, load capacity, and materials to ensure your home is ready for a solar ...

[Get a quote](#)



**Low Voltage
Lithium Battery**

6000+ Cycle Life

7 Steps to Calculate Roof Load Capacity for Solar ...

Discover how to safely install solar panels by calculating your roof's load capacity, considering dead and live loads, and determining if structural ...

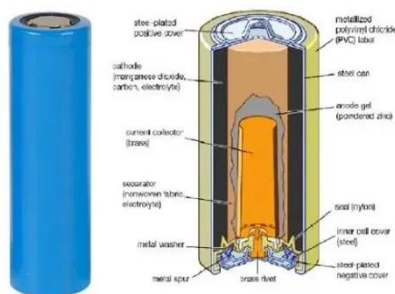
[Get a quote](#)

CHAPTER 5 CS PHOTOVOLTAIC SYSTEMS

Solar photovoltaic panels or modules that are independent structures and do not have accessible/occupied space

underneath are not required to accommodate ...

[Get a quote](#)



DS 1-15 Roof Mounted Solar Photovoltaic Panels (Data Sheet)

2.1.1.1 Design all roof-mounted, rigid PV solar panels and their securement using basic wind pressures in accordance with DS 1-28, Wind Design. Adhere to the following ...

[Get a quote](#)

Roof-Mounted Solar PV Panels

VERTEX has seen an increase in consultation for roof-mounted photovoltaic panels on residential and commercial projects. Learn structural code requirements.

[Get a quote](#)



2025 code shifts: ASCE 7 and Eurocode rules for PV roof loads

5 days ago · The ASCE 7-22 standard



uses more granular ground snow load maps based on decades of additional data, leading to more accurate site-specific calculations. It also provides ...

[Get a quote](#)

Rules for Rooftop Solar

Synopsis: In this installment of Know the Code, code-expert Glenn Mathewson details the commonly encountered issues with the nonelectrical code provisions for solar PV.

[Get a quote](#)



Solar Rooftop Calculator: How Many Solar Panels ...

Now, by average solar panel wattage per square foot, we can put a 10.35kW solar system on an 800 sq ft roof. This is how many solar panels you can put on this ...

[Get a quote](#)

The new AS/NZS1170.2:2021

Basically air gets trapped between the solar panel and the roof, this acts like an internal pressure pushing up and down, up in the panel down on the roof. For this

case the ...

[Get a quote](#)



Structural Engineering for Roof-Mounted Solar Projects

Rooftop-mounted photovoltaic panel or modules systems shall be installed to resist the component and cladding loads specified in Table R401.2 (2)." ...

[Get a quote](#)

How Much do Solar Panels Weigh? , Greentech ...

Evaluating the ability of a roof to support solar modules requires assessing the condition and construction of the roof, calculating the weight impact of the ...

[Get a quote](#)



CHAPTER 4 RS PHOTOVOLTAIC SYSTEMS

User notes: About this chapter: Chapter 4 is specific to photovoltaic solar systems and equipment. Solar thermal

systems are not addressed in this chapter. This chapter covers solar modules ...

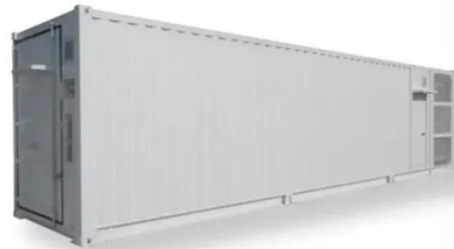
[Get a quote](#)



Understanding Roof Load Capacity for Solar Panels

Building codes generally require that a roof has a minimum live load capacity of 20 pounds per square foot. This is in addition to the capacity required to support the dead load.

[Get a quote](#)



What Solar Installers Should Know About Roof Load Capacity

Roof load capacity is a critical consideration for solar installers embarking on solar panel installations. By conducting thorough assessments, collaborating with structural ...

[Get a quote](#)

How ASCE 7-22 Updates Will Impact PV Racking Systems

In this article, we'll look at consequential

provisions of the engineering standard ASCE 7-22, Minimum Design Loads for Buildings and Other Structures, which is already ...

[Get a quote](#)



CHAPTER 5 CS PHOTOVOLTAIC SYSTEMS

Solar photovoltaic panels or modules that are independent structures and do not have accessible/occupied space underneath are not required to accommodate a roof photovoltaic ...

[Get a quote](#)

FM APPROVAL 4478

This standard evaluates rigid roof-mounted photovoltaic module systems as part of a finished roof assembly for their performance in regard to fire from above the structural deck, ...

[Get a quote](#)



Solar Panel Roof Load Calculator

This article explains some of the core factors determining whether a roof can support a solar system and provide a



formula to determine your roof load. This solar panel roof ...

[Get a quote](#)

7 Steps to Calculate Roof Load Capacity for Solar Panels ...

Discover how to safely install solar panels by calculating your roof's load capacity, considering dead and live loads, and determining if structural reinforcement is needed.

[Get a quote](#)



Contact Us

For catalog requests, pricing, or partnerships, please visit:
<https://www.zenius.co.za>