

SolarMax Energy Systems

Parallel 12v to inverter



Overview

Yes, you can connect two 12V batteries in parallel for use with a 12V inverter. This configuration allows you to increase the overall capacity (Ah) while maintaining the same voltage (12V). However, it is essential to follow specific guidelines to ensure safe and efficient operation.

Parallel 12v to inverter



How to Parallel Multiple Batteries to an Inverter

#shorts In this video I am showing how to parallel 2 or more batteries and connect to an inverter. I also touch on taking an ordinary set of automotive jum

[Get a quote](#)

Connecting Multiple Batteries to an Inverter: Easy Guide

The big benefit of connecting in parallel is that the voltage to your inverter remains the same while the overall energy capacity. So if you use 2, 5, or 10, 12V batteries the voltage would remain at ...

[Get a quote](#)



How to Safely Connect a Battery to an Inverter: A ...

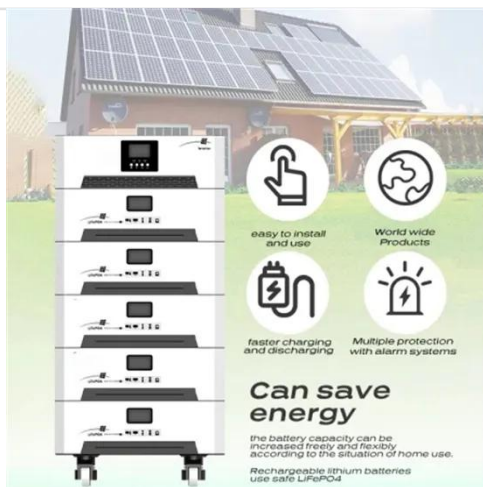
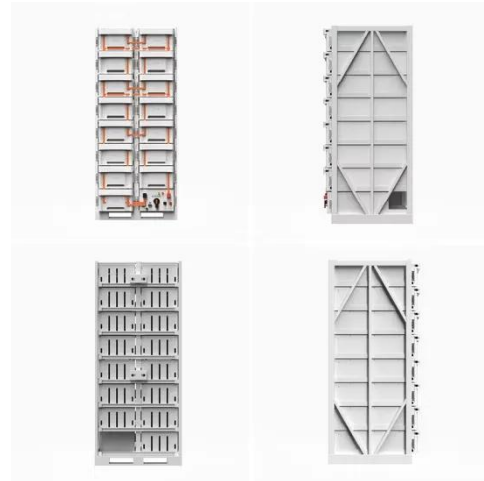
Connecting inverters to batteries is an important part of an off-grid power solution or backup power system, and the right connections ensure that ...

[Get a quote](#)

How to Connect Two Batteries in Parallel to an Inverter?

In home or commercial applications, connecting batteries to an inverter is a common task. Connecting two batteries in parallel to an inverter ...

[Get a quote](#)



How to Safely Connect a Battery to an Inverter: A Step-by-Step ...

Connecting inverters to batteries is an important part of an off-grid power solution or backup power system, and the right connections ensure that the system runs efficiently.

[Get a quote](#)

Two Inverters on one Battery Bank

Some off-grid inverters are specifically designed to work together in parallel and include built-in synchronization features. They are usually connected with an ethernet cable to ...

[Get a quote](#)



How to Connect Parallel Batteries to Inverter

When connecting something like the Go



Power Industrial Pure Sine Wave Inverter - GFCI - 2,000 Watt - 12V # 34278156 to batteries wired in parallel you'll need to connect to ...

[Get a quote](#)

Solar Panels: Which Fuse Between Battery & Power ...

Below is a table showing which fuse size you should get based on the power inverter's wattage. For example, if you have 1500 watt power ...

[Get a quote](#)



- ✓ ALL IN ONE
- ✓ 100Kw/174Kwh High Capacity
- ✓ Intelligent Integration

which is the best way to connect inverter to 2 batteries ...

which is the best way? i will be connecting 2 batteries together in parallel and my question is how would i go about connecting my inverter to the batteries? i will ...

[Get a quote](#)

Battery To Inverter Wire Size Calculator: What Size

The battery to inverter wire size calculator below will provide the size of

the Copper wire that you need in AWG (American Wire Gauge) and mm² (square

[Get a quote](#)



Can I Use 2 Batteries on a 12V Inverter?

Yes, you can use two batteries on a 12V inverter by connecting them in parallel. This configuration maintains the voltage at 12V while doubling the capacity (amp-hours), ...

[Get a quote](#)

How to Wire Batteries in Parallel to a Solar Panel and UPS?

Parallel Connection of Batteries to the PV Panel. How to wire a 12V Solar Panel to Two 12V batteries in Parallel with an Automatic UPS System



[Get a quote](#)

How do I connect two or more batteries together?

It may be advisable to operate the inverter from a bank of 12 Volt batteries



of the same type in a "parallel" configuration. Two such batteries will generate twice the amp/hours of a single ...

[Get a quote](#)

Inverter Wire Size Calculator

Unsure how to connect your inverter and battery? Check The Inverter Store's handy calculator and guide that breaks down the complex process for you easily.

[Get a quote](#)



Can I Connect Two 12V Batteries in Parallel for a 12V Inverter?

Yes, you can connect two 12V batteries in parallel for use with a 12V inverter. This configuration allows you to increase the overall capacity (Ah) while maintaining the same ...

[Get a quote](#)

Can I connect two solar inverters together and how do I do that?

Absolutely. Sometimes a single inverter

cannot provide enough power to meet the demand. In such cases, connecting two inverters in parallel becomes a practical solution. This ...

[Get a quote](#)



How to Wire Solar Panel & Batteries in Parallel

This parallel wiring method is essential for 12V systems, including 12V charge controllers and inverters. Therefore, two or more solar panels and batteries (each rated at 12V DC) are ...

[Get a quote](#)

How to Connect Two Batteries in Parallel to an Inverter?

In home or commercial applications, connecting batteries to an inverter is a common task. Connecting two batteries in parallel to an inverter can increase the system's ...

[Get a quote](#)



SCC and Inverter Wiring for Parallel Batteries

With 2P batteries, you can actually get away with smaller wire connecting them as the parallel interconnects only carry



half the current, but the cables to the inverters must carry ...

[Get a quote](#)

How to Connect an Inverter with Double Batteries at your Home

Details:- To connect an inverter with double batteries at home, you will need to create a series connection or a parallel connection between the batteries, depending on the inverter's



[Get a quote](#)



How to Wire Solar Panels in Series-Parallel ...

The following solar panel and battery wiring diagram shows how to wire a four 12V Solar Panels in series-parallel connection to a 24V, 400Ah ...

[Get a quote](#)

Connecting Multiple Batteries to an Inverter: Easy Guide

The big benefit of connecting in parallel is that the voltage to your inverter

remains the same while the overall energy capacity. So if you use 2, 5, or 10, 12V ...

[Get a quote](#)



My 2000W inverter requires 12V; do I connect my batteries in parallel?

I'd need to keep the batteries in parallel to avoid upping the voltage and destroying my inverter. Am I correct in thinking that I MUST connect the batteries in parallel?

[Get a quote](#)

Wire Size for 400AH (2 @ 200ah) battery bank with 4000w inverter?

I have 2 12v 200AH Renogy batteries I'd like to create a 12v 400ah battery bank from. I am trying to figure out what gauge of wire to use for connecting these batteries together ...

[Get a quote](#)



My 2000W inverter requires 12V; do I connect my ...



I'd need to keep the batteries in parallel to avoid upping the voltage and destroying my inverter. Am I correct in thinking that I MUST ...

[Get a quote](#)

How Two 12V Batteries in Parallel Impact Lifespan ...

For most 12V-based systems, parallel 12V batteries offer the flexibility and capacity needed without the complexities of higher voltage ...

[Get a quote](#)



Contact Us

For catalog requests, pricing, or partnerships, please visit:
<https://www.zenius.co.za>