

SolarMax Energy Systems

**One square meter of
photovoltaic panel generates
electricity**



Overview

Let's cut through the solar jargon - when we talk about solar panel productivity, we're essentially measuring how well these silicon rectangles turn sunshine into usable electricity. For 1m² of modern photovoltaic panels, you're looking at a daily output ranging from 0.3 kWh to 1.5 kWh. How much power can a 100m² roof produce?

When panel efficiency reaches 30%, a 100m² roof could generate 50,000kWh/year - enough to power 20 average homes. The solar revolution isn't coming; it's already here. Solar panels have become a cornerstone of renewable energy, but many wonder: How much power can a single square meter of solar panels actually produce?

.

How do you calculate wattage of a solar panel?

Wattage is the output of solar panels that is calculated by multiplying the volts by amps. Here, the amount of the force of the electricity is represented by volts. The aggregate amount of energy used is expressed in amps (amperes). Output ratings on most solar panels range between 250 watts to 400 watts. 1. Number of Solar Cells.

What is the science behind photovoltaic efficiency?

Let's break down the science behind photovoltaic efficiency. Under optimal conditions (5 peak sun hours): At noon under direct sunlight: *Note: 1m² = 10.76 sq.ft; values rounded for clarity* 1. Tandem Solar Cells Multi-layer designs absorbing full sunlight spectrum: Lab efficiency reached 39.7% (2023 data), projected for commercialization by 2030.

How many Watts Does A 72-cell Solar System produce?

They possibly give an output of about 270 watts to 300 watts. They are suitable for residential areas. The size of a 72-cell solar system is the same, just they have an extra row of cells. The average output from 72-cell solar

panels ranges between 350 watts to 400 watts. They are used in commercial solar projects and large buildings.

How do you calculate watts per square meter?

By knowing the W/m value, you can: Watts per square meter helps you make informed decisions when choosing and installing solar panels. Calculating watts per square meter (W/m) is simple: Multiply the power output of a single panel by the number of panels. Divide the total watts generated by the total panel surface area.

How big is a 1m² solar cell?

Note: 1m² = 10.76 sq.ft; values rounded for clarity 1. Tandem Solar Cells Multi-layer designs absorbing full sunlight spectrum: Lab efficiency reached 39.7% (2023 data), projected for commercialization by 2030. 2. AI-Powered Tracking Dual-axis trackers with machine learning algorithms boost annual yield by 35%-45%. 3.

One square meter of photovoltaic panel generates electricity



How much electricity can be generated by one square meter of ...

However, the actual power generation may fluctuate considerably. If the intensity of sunlight is weak, the duration of sunlight is short, or the efficiency of the PV panels is low, then the actual ...

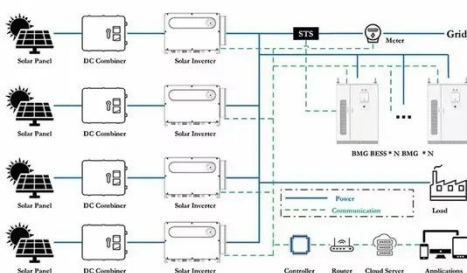
[Get a quote](#)

How Much Electricity Does 1 Square Meter (m2) Solar Panel Generate?

Assuming an average efficiency of 20%, which is typical for this modern solar panel with a power of 211 watts per square meter, and an average exposure to sunlight of 5 hours per day, a 1 m2 ...



[Get a quote](#)



Solar Panel Output per Square Meter: Efficiency Factors & Future ...

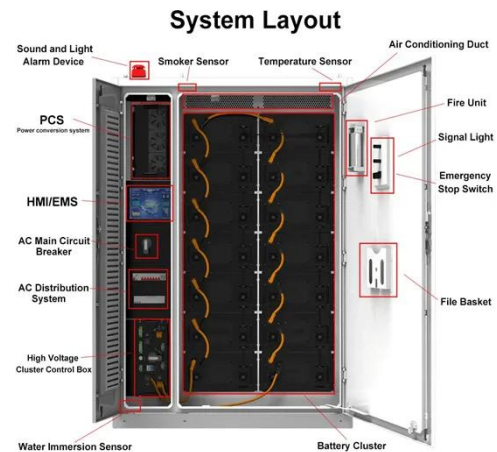
Solar panels have become a cornerstone of renewable energy, but many wonder: How much power can a single square meter of solar panels actually produce? Let's break down the ...

[Get a quote](#)

Solar Panel Watts Per Square Meter Explained

Compare solar panels to see which generates most electricity per square meter. A higher W/m value means a solar panel produces more power from a given area. This can help you ...

[Get a quote](#)



How Much Electricity Can 1 Square Meter of Solar Panels Generate ...

The Basics of Solar Panel Energy Output

Let's cut through the solar jargon - when we talk about solar panel productivity, we're essentially measuring how well these silicon rectangles turn ...

[Get a quote](#)

How much solar power can my roof generate?

850 square feet of usable roof space for solar: The average U.S. roof is about 1,700 square feet. You should never put panels on northern roof ...

[Get a quote](#)



How much electricity can one square meter of solar ...

So, how much electricity can a one-

square-meter solar panel generate?
Taking monocrystalline silicon as an example: 100 100 19.5% 0.1 ...

[Get a quote](#)



How many watts is 1 square meter of solar energy?

Understanding Solar Energy Output per Square Meter: The output of solar energy from one square meter can vary based on several factors, ...

[Get a quote](#)



How To Calculate Solar Panel Output? - Glyde Solar

4.What is a solar panel output tester?
Set your multimeter to the DC' amps' preset and place your solar panel in direct sunshine to evaluate its amperage output. In Square Foot, Modern ...

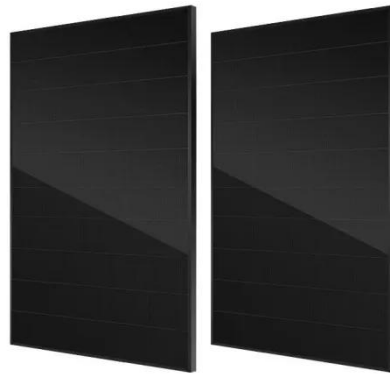
[Get a quote](#)

How much electricity can one square meter of solar ...

Therefore, approximately one square meter can generate around 150W-170W of electricity. What power factors will

affect the power generation ...

[Get a quote](#)



How Much Electricity Can 1 Square Meter of Solar Panels Generate ...

For 1m² of modern photovoltaic panels, you're looking at a daily output ranging from 0.3 kWh to 1.5 kWh. But why such a wide range? Stick with me - this solar story has more twists than a ...

[Get a quote](#)

PVWatts Calculator

NREL's PVWatts ® Calculator Estimates the energy production of grid-connected photovoltaic (PV) energy systems throughout the world. It allows homeowners, small building owners, ...

[Get a quote](#)



How much electricity does 1 square meter of solar energy produce

The amount of electricity generated by 1



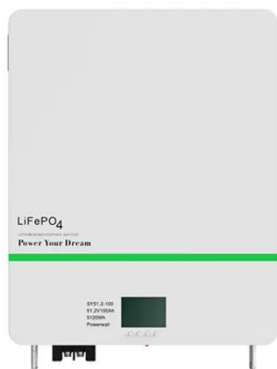
square meter of solar energy can vary based on multiple factors, including location, type of solar panel, and weather conditions. The ...

[Get a quote](#)

How many watts is 1 square meter of solar energy? , NenPower

Understanding Solar Energy Output per Square Meter: The output of solar energy from one square meter can vary based on several factors, including location, time of year, and ...

[Get a quote](#)



Solar Panel Watts Per Square Meter Explained

Compare solar panels to see which generates most electricity per square meter. A higher W/m value means a solar panel produces more power from a given ...

[Get a quote](#)

Solar Panel Output per Square Meter: Efficiency ...

Solar panels have become a cornerstone

of renewable energy, but many wonder:
How much power can a single square
meter of solar panels actually produce?

...

[Get a quote](#)



✓ IP65/IP55 OUTDOOR CABINET

✓ OUTDOOR MODULE CABINET

✓ OUTDOOR 5G BASE STATION
CABINET

✓ WATERPROOF

How Much Energy Does One Solar Panel Produce in ...

Before determining how much power a
solar panel generates, you must
understand a few basic terms. A kilowatt
(kW) is a unit of electrical ...

[Get a quote](#)

How much electricity can one square meter of solar panels generate?

Therefore, approximately one square
meter can generate around 150W-170W
of electricity. What power factors will
affect the power generation of solar
panels?

[Get a quote](#)



How much energy do solar panels produce for your home?

More people are beginning to see the
numerous benefits solar panels can

bring, both environmentally and financially. Learn exactly how much electricity solar panels could ...

[Get a quote](#)



How much electricity does 1 square meter of solar ...

The amount of electricity generated by 1 square meter of solar energy can vary based on multiple factors, including location, type of solar ...

[Get a quote](#)



How much electricity can be generated by one square meter of photovoltaic

However, the actual power generation may fluctuate considerably. If the intensity of sunlight is weak, the duration of sunlight is short, or the efficiency of the PV panels is low, then the actual ...

[Get a quote](#)



Solar Panel Output: How Much Power Does a Solar ...

Learn how much electricity is produced

by a solar panel, what factors affect solar panel output, and how many panels you need to power ...

[Get a quote](#)



How Much Electricity Does 1 Square Meter (m2) Solar Panel ...

Assuming an average efficiency of 20%, which is typical for this modern solar panel with a power of 211 watts per square meter, and an average exposure to sunlight of 5 hours per day, a 1 m2 ...

[Get a quote](#)

How Much Electricity Do Solar Panels Generate in ...

Discover how much electricity solar panels generate in Ireland. Learn about the average output per square metre, daily generation, and winter ...

[Get a quote](#)



Solar Power per Square Meter Calculator

A solar power per square meter calculator takes details regarding these

factors and then gives the accurate output generated by the solar panel per square meter.

[Get a quote](#)



How Much Electricity Can 1 Square Meter of Solar Panels ...

...

For 1m² of modern photovoltaic panels, you're looking at a daily output ranging from 0.3 kWh to 1.5 kWh. But why such a wide range? Stick with me - this solar story has more twists than a ...

[Get a quote](#)



Solar Power per Square Meter Calculator

A solar power per square meter calculator takes details regarding these factors and then gives the accurate output generated by the solar panel ...

[Get a quote](#)

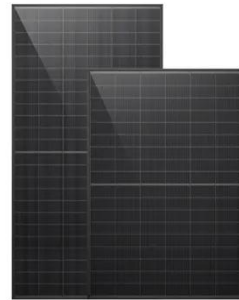


How Much Solar Power Is In One Square Kilometer Muller

5 days ago · How Much Solar Energy Is Received Per Square Meter? The

intensity of solar energy received by solar panels is quantified in watts per square meter, termed solar ...

[Get a quote](#)



What Can One Square Meter of Solar Panels Do?

It is estimated that one square meter of solar panels can generate around 20,000 kWh of electricity in a year, significantly helping energy-deficient areas by solving water ...

[Get a quote](#)

Contact Us

For catalog requests, pricing, or partnerships, please visit:
<https://www.zenius.co.za>