

## SolarMax Energy Systems

**Lithium battery pack is one  
ampere-hour short**



## Overview

---

What does Ah mean on a lithium battery?

When browsing for lithium batteries, you might see "amp hour rating" (Ah), indicating how much the battery holds and how long it lasts. But what does Ah mean, and how do you use it?

This guide covers amp hours, their relation to lithium batteries, and the difference between amp hours and watt hours.

How long does a lithium battery last?

A high-ampere lithium battery can run devices longer. For example, if you have two 18-volt lithium batteries for a power drill. One is rated for 1.5 Ah and the other for 3.0 Ah. The 3 Ah battery can provide twice as much current over time. So if the drill uses 1 amp, the 3 Ah battery would last around 3 hours vs. 1.5 hours for the 1.5 Ah battery.

How many amps can a lithium battery hold?

For example, if a lithium battery is rated for 100 Ah, it can provide a current of 1 amp for 100 hours before being depleted. Or it could provide 10 amps for 10 hours or 20 amps for 5 hours. The total current over time remains 100 amp-hours. The higher the amp-hour rating, the more energy the battery can hold.

What are Ah ratings in lithium batteries?

Lithium batteries are rated in ampere-hours (Ah), which indicates their capacity to store energy over time. Understanding these ratings is crucial for optimizing battery performance and longevity, especially in applications requiring long-term energy storage.

What is an amp hour battery?

It's like the size of a bucket that can hold water. The higher the Amp hour battery rating, the more charge it can store and the longer it can power a

device before recharging. In simpler terms, think of an Amp as the speed of water flowing through a pipe, while an Amp hour is the size of the bucket that can hold that water.

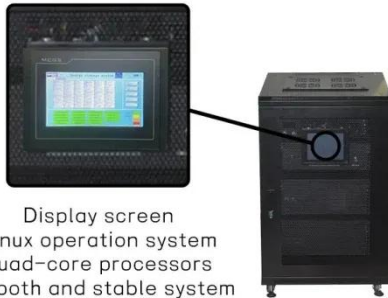
What is an example of an Ah battery?

Amp-hours (Ah) Amp hours represent the capacity of a battery to store electric charge. It indicates how much charge a battery can deliver over time. For example, suppose a battery has a rating of 5 Ah. In that case, it can provide a constant current of 1 ampere for 5 hours before needing to be recharged.

Ohms ( $\Omega$ )

## Lithium battery pack is one ampere-hour short

---



Display screen  
Linux operation system  
quad-core processors  
smooth and stable system

### An introduction to lithium 18650 batteries

In other words, if you draw a lot of current from a lead battery, you will get a lot less total amp hours or watt hours. Lithium batteries are much lighter and ...

[Get a quote](#)

---

### How to Test Lithium Ion Battery: A Step-by-Step Guide

Monitor Ampere-Hours (Ah): For a lithium-ion battery 12V 100Ah, a healthy battery should discharge close to 100Ah before reaching a low voltage threshold. Low capacity indicates ...



[Get a quote](#)

---



### What Does Ah Mean on a Battery? Amp Hours Explained

'Ah' stands for amp hours, short for ampere hour, which measures how much charge a battery can hold and how long it can power something before needing a recharge.

[Get a quote](#)

---

### What Does Ah Mean On A

## Battery? , Amp Hour Meaning

Amp-hours, or Ah for short, are a unit of measure for a battery's energy capacity. This rating tells us how much current a battery can provide at a specific rate for a certain period. So, for ...

[Get a quote](#)



## Understanding Battery Ah: A Guide to Amp-Hour Ratings

Explore what Ah means on batteries, how it affects performance, and tips for choosing the right battery capacity. Learn how to calculate runtime and ...

[Get a quote](#)

## What Does Ah Mean in Lithium Batteries -- Large Battery

The term "Ah," short for amp-hour, represents the capacity of a battery to store and deliver electrical energy. It indicates how much current a battery can supply over a ...

[Get a quote](#)



## How Amp Hours Impact Lithium Battery Life and ...

Amp-hour (Ah) indicates the electric charge capacity of a lithium battery, showing how much power it holds and



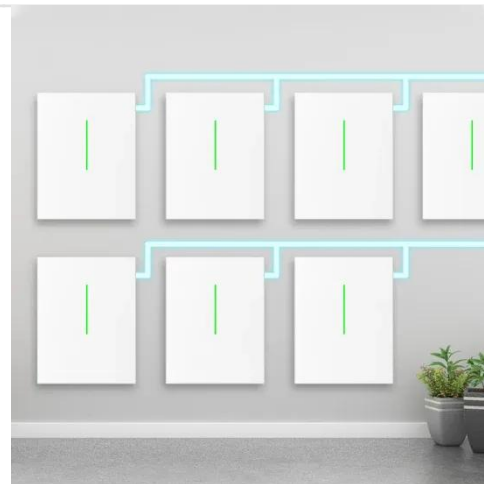
how long it lasts. Higher Ah ...

[Get a quote](#)

## What Does Ah Mean on a Lithium Battery?

In this comprehensive guide, we'll demystify the meaning of "Ah" (Amp-hours) on lithium batteries and why it matters for your daily use. From understanding basic battery ...

[Get a quote](#)



## Voltage vs Amperage in Lithium Batteries: Key ...

Understanding the difference between voltage and amperage is critical when working with lithium-ion batteries. While voltage (V) measures ...

[Get a quote](#)

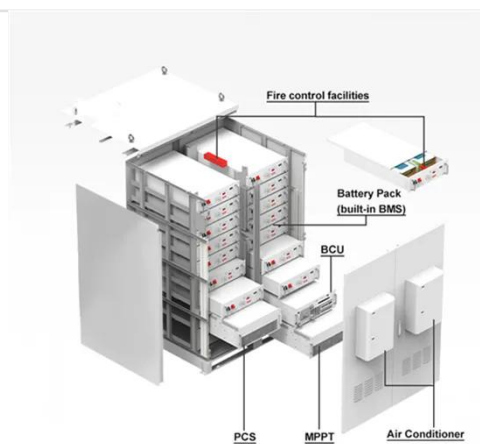


## How Do Batteries Measure Ampere Hours (Amp ...

Batteries measure ampere hours (Ah) by multiplying the current (in amperes) they deliver by the duration (in hours)

they sustain that current. ...

[Get a quote](#)



## What Does Ah Mean on a Battery? Lithium-ion Amp ...

Ah, or Amp hour, is a vital metric in lithium-ion batteries, delineating their capacity and operational capabilities. In this article, we ...

[Get a quote](#)

## Understanding Battery Ah: A Guide to Amp-Hour Ratings

Explore what Ah means on batteries, how it affects performance, and tips for choosing the right battery capacity. Learn how to calculate runtime and compare Ah

[Get a quote](#)



## What Does Ah Mean in Lithium Batteries -- Large ...

The term "Ah," short for amp-hour, represents the capacity of a battery to store and deliver electrical energy. It

indicates how much current a ...

[Get a quote](#)



## DAKOTA LITHIUM 12 V 7 Ah BATTERY

Charger not included Built Dakota tough, this 12 Volt lithium battery packs a punch. Crafted out of Lithium Iron Phosphate (LiFePO4) technology this is a battery built to last. With a lifespan of ...



[Get a quote](#)



## What Does Ah Mean on a Battery: Amp Hours (Ah) and Watt ...

Learn what Ah (ampere-hour) means on batteries: capacity measurement, how to calculate it, difference from Wh (watt-hour), and real-world performance factors for lithium ...

[Get a quote](#)

## Understanding Ah Ratings of Lithium Batteries

Amp hour (Ah) ratings indicate how

much charge a lithium battery can supply over time, directly impacting its runtime and efficiency. Higher Ah means longer usage times but ...

[Get a quote](#)



## Best Small 12v Battery [Updated On: September 2025]

1 day ago· Capacity, measured in amp-hours (Ah), indicates how much energy the battery can store. A higher Ah rating means the battery can power devices for a longer period.

[Get a quote](#)

## What Does Ah Mean on a Battery: Amp Hours (Ah) and Watt Hours ...

Learn what Ah (ampere-hour) means on batteries: capacity measurement, how to calculate it, difference from Wh (watt-hour), and real-world performance factors for lithium ...

[Get a quote](#)



## 100Ah Battery Runtime Decoded: Expert Calculations for Lithium, ...



Learn how to calculate 100Ah battery lifespan for LiFePO4, lithium, and lead-acid types. Includes real-world runtime charts, efficiency factors, and applications.

[Get a quote](#)

---

## What Does 'Ah' Mean For Lithium Batteries?

The short and simple answer is that "Ah" stands for "amp-hour" or "ampere-hour." The general idea behind the amp-hour is to give consumers a rough idea of the length of a ...

[Get a quote](#)



## Battery Runtime Calculator , How Long Can A Battery ...

A 100Ah battery can theoretically provide 100 amps for 1 hour or 10 amps for 10 hours before being fully discharged (at an ideal, steady rate). ...

[Get a quote](#)

---

## What Does 'Ah' Mean For Lithium Batteries?

The short and simple answer is that "Ah" stands for "amp-hour" or "ampere-hour." The general idea behind the amp-hour is

to give consumers a ...

[Get a quote](#)



## How Amp Hours Impact Lithium Battery Life and Performance

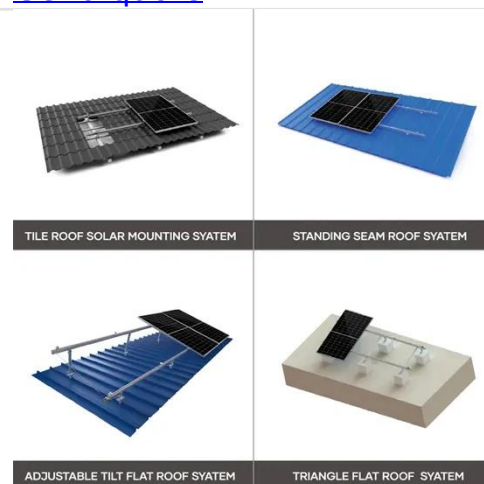
Amp-hour (Ah) indicates the electric charge capacity of a lithium battery, showing how much power it holds and how long it lasts. Higher Ah ratings mean more power and ...

[Get a quote](#)

## Understanding Ah Ratings of Lithium Batteries

Amp hour (Ah) ratings indicate how much charge a lithium battery can supply over time, directly impacting its runtime and efficiency. Higher Ah ...

[Get a quote](#)



## What's the difference between Amp Hour and Amperage?

In Short: Batteries rated with Amperage are stating the highest level of energy



they are designed to give at a given moment in time for short periods (such as starting an engine). ...

[Get a quote](#)

---

## What Does Ah Mean on a Battery? Lithium-ion Amp Hour Guide

Ah, or Amp hour, is a vital metric in lithium-ion batteries, delineating their capacity and operational capabilities. In this article, we explore the essence of Ah and its pivotal role in ...

[Get a quote](#)



1075KWHH ESS



## Battery pack calculator : Capacity, C-rating, ampere, charge and

Battery calculator : calculation of battery pack capacity, c-rate, run-time, charge and discharge current Onlin free battery calculator for any kind of battery : lithium, Alkaline, LiPo, Li-ION, ...

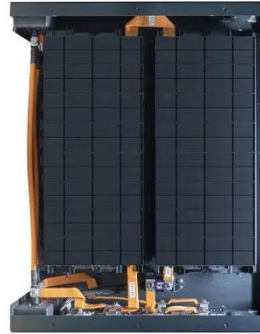
[Get a quote](#)

---

## 300 Amp Hour Lithium Battery: The Ultimate Guide to High ...

Lithium batteries have become increasingly popular due to their lightweight design, high energy density, and long lifespan. Among these, the 300 amp hour (Ah) lithium battery ...

[Get a quote](#)



---

## Contact Us

For catalog requests, pricing, or partnerships, please visit:  
<https://www.zenius.co.za>