

SolarMax Energy Systems

**Is the lithium battery pack
connected in series or in
parallel**



Overview

Connecting battery packs in series increases the output voltage while keeping the capacity the same. In contrast, wiring them in parallel boosts the total capacity without changing the voltage. Can lithium-ion batteries be connected in parallel?

Connecting lithium-ion batteries in parallel or series is more complex than merely linking circuits in series or parallel. Ensuring the safety of both the batteries and the person handling them requires careful consideration of several crucial factors.

What is a series parallel battery connection?

Series-parallel. That's not wiring your batteries in both series and parallel. That would short your battery system! A series-parallel connection is when you wire several batteries in series. Then, you create a parallel connection to another set of batteries in series. By doing this, you can increase both voltage and capacity.

What is the difference between series and parallel connection of LiFePO₄ batteries?

Similarities: Enhanced Battery Performance: Both series and parallel connections of LiFePO₄ batteries can enhance the overall performance of the battery pack. A series connection increases the voltage output, while a parallel connection boosts the capacity.

Why are lithium batteries connected in series?

Lithium batteries are connected in series when the goal is to increase the nominal voltage rating of one individual lithium battery - by connecting it in series strings with at least one more of the same type and specification - to meet the nominal operating voltage of the system the batteries are being installed to support.

What is the difference between series and parallel battery packs?

The key differences between battery packs in series and parallel involve voltage and capacity configurations. Series battery packs increase voltage while maintaining the same capacity. In contrast, parallel battery packs increase capacity while maintaining the same voltage.

How many lithium batteries can be connected in series?

For instance, LiTime allows for a maximum of four 12V lithium batteries to be connected in series, resulting in a 48-volt system. It's always important to consult the battery manufacturer to ensure that you stay within their recommended limits for series connections.

Is the lithium battery pack connected in series or in parallel



Lithium: Drug Uses, Dosage and Side Effects

Lithium is used to treat the manic episodes of manic depression - hyperactivity, rushed speech, poor judgment and aggression. Learn about side effects, interactions and ...

[Get a quote](#)

Ultimate Guide of LiFePO4 Lithium Batteries in Series & Parallel

Unlock the ultimate guide to using LiFePO4 lithium batteries in series and parallel. Learn configurations, benefits, and tips for optimal performance!



[Get a quote](#)



LiFePO4 Lithium Batteries in Series VS Parallel ...

Enhanced Battery Performance: Both series and parallel connections of LiFePO4 batteries can enhance the overall performance of the ...

[Get a quote](#)

A deep analysis of lithium

battery in series and parallel

In the development of modern technology, lithium batteries have become the primary power source for various electronic devices and electric motorcycles ...

[Get a quote](#)



Lithium-Ion Batteries: Series vs. Parallel--What's the Difference?

When setting up a battery system, especially with lithium batteries, you often face a choice between connecting them in series or in parallel. Each configuration has its unique benefits ...

[Get a quote](#)

Lithium battery series and parallel, the difference ...

The process of assembling lithium batteries into groups is called PACK, which can be a single battery or a lithium battery pack connected in series and parallel.

[Get a quote](#)



Lithium 101

Lithium possesses unique chemical properties which make it irreplaceable in a wide range of important applications,

**Battery String-S224**

- 1C Charge/Discharge
- Easy configuration and maintenance
- Power supply can be single battery string or parallel battery strings

including in rechargeable batteries for electric vehicles (EV).

[Get a quote](#)

Powering Up Safely: How to Wire Batteries in Series

Wiring lithium-ion batteries in series is a common practice to increase overall voltage, but requires careful attention to detail and adherence ...

[Get a quote](#)



How to Connect Lithium Batteries in Series and Parallel?

In a parallel connection, the batteries are linked side-by-side. This configuration keeps the voltage the same but increases the capacity. For ...

[Get a quote](#)

Lithium

Lithium (from Ancient Greek: λίθος, líthos, 'stone') is a chemical element; it has symbol Li and atomic number 3. It is a soft, silvery-white alkali

metal. Under standard conditions, it is ...

[Get a quote](#)



Lithium levels tied to Alzheimer's disease and dementia

3 days ago· New research suggests that lithium replacement could be a potential approach to prevent and treat mild cognitive impairment and Alzheimer's disease.

[Get a quote](#)

Lithium , Definition, Properties, Use, & Facts , Britannica

lithium (Li), chemical element of Group 1 (Ia) in the periodic table, the alkali metal group, lightest of the solid elements. The metal itself--which is soft, white, and lustrous--and ...

[Get a quote](#)



Batteries in Series vs Parallel: Which is Better?



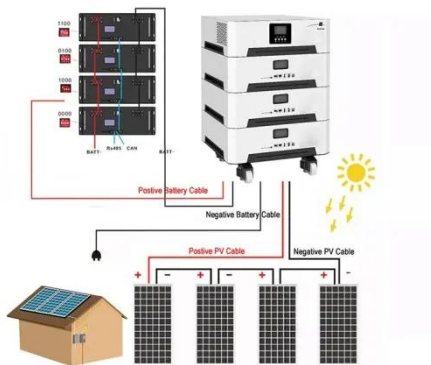
Do you know the difference between batteries in series vs parallel? Find out how to connect batteries in series or parallel & discover which one's best for you!

[Get a quote](#)

Science Behind Lithium-ion Batteries in Series vs ...

Choice between series and parallel connections for lithium-ion batteries depends on the specific application and requirements of the system.

[Get a quote](#)



Understanding Battery Pack Configurations: Series vs. Parallel ...

Think of series connection like stacking batteries in a flashlight. When you place batteries end-to-end, the voltage adds up, giving more power to the device.

[Get a quote](#)

Battery Packs In Series Or Parallel: Key Differences And Wiring

Series connections require connecting the positive terminal of one battery to

the negative terminal of the next, while parallel connections connect all positive terminals together ...

[Get a quote](#)



How to Wire Batteries in Parallel or Series

For example, if connecting two of our 12V 10Ah Dakota Lithium batteries in series, what you'll get is a doubling of voltage or a 24V 10Ah ...

[Get a quote](#)

Batteries in Series vs Parallel: Which is Better?

Do you know the difference between batteries in series vs parallel? Find out how to connect batteries in series or parallel & discover which one's best for you!

[Get a quote](#)



Lithium Series, Parallel and Series and Parallel

Connecting multiple lithium batteries into a string of batteries allows us to build a battery bank with the potential to

operate at an increased voltage, or with increased capacity and runtime, or both.

[Get a quote](#)



Connecting batteries in series - BatteryGuy ...

There are two ways to wire batteries together, parallel and series. The illustrations below show how these set wiring variations can produce ...

[Get a quote](#)



Lithium: MedlinePlus Drug Information

Lithium is used to treat and prevent episodes of mania (frenzied, abnormally excited mood) in people with bipolar disorder (manic-depressive disorder; a disease that causes episodes of ...

[Get a quote](#)

Science Behind Lithium-ion Batteries in Series vs Parallel

Connecting lithium-ion batteries can be done in two primary ways: series and parallel. In a series connection, the

positive terminal of one battery is connected to the ...

[Get a quote](#)



LiFePO4 Lithium Batteries in Series VS Parallel Connection

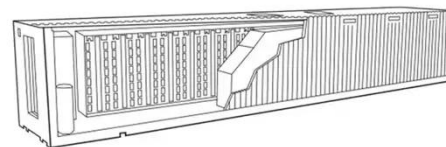
Enhanced Battery Performance: Both series and parallel connections of LiFePO4 batteries can enhance the overall performance of the battery pack. A series connection ...

[Get a quote](#)

Definition of Series and Parallel Connection of Lithium

...

Lithium battery pack technique refers to the processing, assembly and packaging of lithium battery pack. The process of assembling lithium cells ...



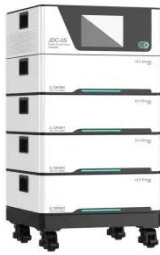
[Get a quote](#)

Lithium (oral route)

Lithium is used to treat mania that is part of bipolar disorder (manic-depressive illness). It is also used on a daily basis to reduce the frequency and

severity of manic episodes.

[Get a quote](#)



Science Behind Lithium-ion Batteries in Series vs ...

Connecting lithium-ion batteries can be done in two primary ways: series and parallel. In a series connection, the positive terminal of one battery ...

[Get a quote](#)



How to Connect Lithium Batteries in Series and Parallel?

A series-parallel connection combines both configurations to increase both voltage and capacity. For example, connecting four 3.7V 100mAh lithium cells in a series-parallel ...

[Get a quote](#)

Contact Us

For catalog requests, pricing, or partnerships, please visit:

<https://www.zenius.co.za>