

SolarMax Energy Systems

**Is Huawei s base station
communication power supply
good**



Overview

The CAN interface operates at 125kbps with extended 29 bit identifiers. On power up, the unit will send out unsolicited packets and this can be useful in ensuring your hardware is working correctly.

How Huawei is accelerating the digital transformation of base stations?

Huawei is accelerating the digital transformation of base stations by adopting AI and IoT. Harnessing these digital technologies, 5G Power optimizes coordinated scheduling between various systems, such as power supply modules, site hardware, and the network.

What is a Huawei base station?

Let's dive into a technical explanation. A base station, also known as an eNodeB (for 4G LTE) or gNodeB (for 5G NR) in Huawei's terminology, is a piece of equipment that facilitates wireless communication between user equipment (UE) like smartphones, tablets, and IoT devices, and the core network of the telecommunications provider.

What systems does Huawei offer?

Huawei provides comprehensive management and control systems, such as Huawei's U2000 or Huawei's Cloud BTS. These systems enable operators to monitor, configure, and manage base stations remotely, ensuring optimal network performance and reliability.

What is Huawei PowerCube?

To address this situation, Huawei offers PowerCube, an industry-leading hybrid power supply solution. Built along the lines of a Micro-Grid Energy System (MGES), it comprises four elements – power generation, control, monitoring, and energy storage.

Why should you choose Huawei for a power leased site?

Flexible multi-standard output capabilities can ensure power leased sites, covering diverse functions such as security monitoring, disaster detection, and

outdoor advertising. With the aim of achieving ubiquitous green connectivity and computing, Huawei is a leader in the digitalization of site power.

What green energy solutions does Huawei offer?

Huawei provides a variety of green energy solutions, including solar scenarios that feature maximum power point tracking (MPPT) solar energy controllers, and hybrid solutions that combine renewable and conventional energies with specific energy-storage systems.

Is Huawei s base station communication power supply good



Huawei

The mountain roads to the 5800-meter and 6500-meter camps are closed to traffic. As such, the near eight tons of supplies including the base station and power supply equipment have to be ...

[Get a quote](#)

Power Consumption Modeling of 5G Multi-Carrier Base ...

However, there is still a need to understand the power consumption behavior of state-of-the-art base station architectures, such as multi-carrier active antenna units (AAUs), as well as the ...



[Get a quote](#)



Technology is good. Pass it on.

Specifically, Huawei and its carrier customers and partners jointly developed a new emergency communication solution, which provides a signal coverage for ...

[Get a quote](#)

Base Station Communication Equipment Good Price Ericsson Huawei ...

Base Station Communication Equipment Good Price Ericsson Huawei Rru/Bbu Wholesale Sale, Find Details and Price about Rru Bbu from Base Station Communication Equipment Good ...

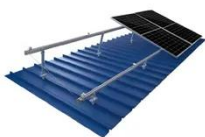
[Get a quote](#)



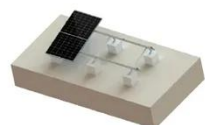
TILE ROOF SOLAR MOUNTING SYATEM



STANDING SEAM ROOF SYATEM



ADJUSTABLE TILT FLAT ROOF SYATEM



TRIANGLE FLAT ROOF SYATEM

How Robust Is Huawei Base Station Ethernet Switching? Will It

Huawei's solution employs AI-driven power management, dynamically adjusting energy use based on real-time traffic. During off-peak hours, it slashes consumption by up

[Get a quote](#)

Sustainable Power Supply Solutions for Off-Grid Base ...

In the context of off-grid telecommunication applications, off-grid base stations (BSs) are commonly used due to their ability to provide radio ...

[Get a quote](#)



What is huawei base station

Components like the main control board, baseband processing board, and power module can be easily replaced or



upgraded. The modular structure allows for flexible installation and rapid ...

[Get a quote](#)

How energy-efficient are Huawei's 5G base stations compared to ...

Huawei's 5G base stations are more energy-efficient than previous generation equipment due to advanced power management, efficient hardware designs, and the use of smaller cells. They ...



[Get a quote](#)



Digitalizing site power for green connectivity and computing

Huawei's 5G Power can help customers quickly build intelligent sites, optimize TCO, and meet the much higher requirements of 5G.

[Get a quote](#)

Energy-efficiency schemes for base stations in 5G heterogeneous

In today's 5G era, the energy efficiency (EE) of cellular base stations is crucial for sustainable communication. Recognizing this, Mobile Network Operators are actively prioritizing EE for ...

[Get a quote](#)



LiFePO₄

Wide temp: -20°C to 55°C

Easy to expand

Floor mount&wall mount

Intelligent BMS

Cycle Life:≥6000

Warranty :10 years



Communication Base Station Power Backup Units

When typhoons knock out power grids or extreme temperatures strain energy systems, communication base station power backup units become the last line of defense for ...

[Get a quote](#)

Review: Huawei R4850G2 Power Supply 53.5VDC, 3kW with CAN

The Huawei R4850G2 is a very capable 48V Telecommunications grade power supply available brand-new at cheap surplus prices (normally under \$100 USD). Rated at ...

[Get a quote](#)



Power Supply Solutions for Wireless Base Stations Applications



MORNSUN has designed entire collections of power supplies and related electrical components, which are all known in the industry for their high reliability and quality. In particular, MORNSUN ...

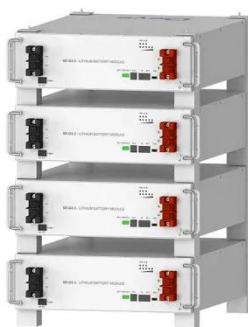
[Get a quote](#)

Bbu Good Quality Huawei Telecom Power Bbu 5900 Base Station

Our products are mainly communication base station equipment, such as AAU (Active Antenna Unit), BBU (Bandwidth Based Unit), RRU (Remote Radio Unit), PRRU (Pico ...



[Get a quote](#)



Deye Official Store

10 years
warranty

Intelligent Electric Power , Smart Grid Solutions

Intelligent Power Distribution The future power grid will evolve to the new generation power system from the technical characteristics. From the ...

[Get a quote](#)

Communication Base Station Energy Solutions

The Importance of Energy Storage Systems for Communication Base Station

With the expansion of global communication networks, especially the ...

[Get a quote](#)



3900 Series Base Station Product Description V1

These base stations can work in multi-mode due to their cutting-edge modular design. They also have broad bandwidth and are eco-friendly and easily upgradeable. Specifically, 3900 series ...

[Get a quote](#)

Reliability Design of GSM Mobile Base Station-EEWORLD

The system reliability design of Huawei M900/M1800 digital cellular mobile base station refers to the international standard manual MIL-HDBK-217F and MIL-HDBK-338. ...



[Get a quote](#)

How Robust Is Huawei Base Station Ethernet Switching? Will It

Huawei's solution employs AI-driven



power management, dynamically adjusting energy use based on real-time traffic. During off-peak hours, it slashes consumption by up to ...

[Get a quote](#)

huawei base station

A Huawei base station is a critical component in modern telecommunications networks, specifically in cellular networks like 4G LTE and 5G NR. Let's dive into a technical ...

[Get a quote](#)



Huawei 2007 Annual Report

Huawei's next generation green base station solution adopts best-in-class power amplification technology, increasing amplification efficiency by 45% and effectively reducing power ...

[Get a quote](#)

Huawei Digital Power 2023 Sustainability Report

Six international standard entries, including the Smart Energy Solution for Communication Base Stations,

contributed by Huawei Digital Power, won the 2023 Science and Technology Award ...

[Get a quote](#)



Uninterrupted remote site power supply

Considering that remote base stations must be highly-integrated, inexpensive, and modest, Huawei has developed its all-on-pole EasySite solution, which integrates the base station, ...

[Get a quote](#)

3900 Series Base Station Product Description

Provides CPRI ports for communication with RRUs and processes uplink and downlink baseband signals. Manages the base station by means of operation and ...

[Get a quote](#)



Powering 5G

Traditional high-power base stations can leave 'black spots' with no signal, and, with the higher frequencies utilised in 5G, currently around 4GHz, the problem

is potentially ...

[Get a quote](#)



Contact Us

For catalog requests, pricing, or partnerships, please visit:
<https://www.zenius.co.za>