

## SolarMax Energy Systems

# Internal combustion power station



## Overview

---

An internal combustion engine (ICE or IC engine) is a in which the of a occurs with an (usually air) in a that is an integral part of the flow circuit. In an internal combustion engine, the expansion of the high- and high- gases produced by combustion applies direct to some component of the engine.

## Internal combustion power station

---



### Basic Information for Stationary Engines , US EPA

What Are Stationary Internal Combustion Engines? Stationary internal combustion engines use pistons that alternatively move back and forth ...

[Get a quote](#)

### Internal combustion engine

While there are many stationary applications, most ICEs are used in mobile applications and are the primary power supply for vehicles such as cars, aircraft and boats. ICEs are typically ...

[Get a quote](#)



Sample Order  
UL/KC/CB/UN38.3/UL



### 425.docx

Abstract Diesel power plants are widely used in stationary and mobile power applications ranging from emergency power plants, standby plants, peak power plants and black start plants. The ...

[Get a quote](#)

### Why do power stations use internal combustion engines,

## and why ...

Power stations of all shapes and sizes use internal combustion engines and turbochargers, either as backup solutions, or to generate power on a more permanent basis. ...

[Get a quote](#)



## White paper Combustion engine power plants

1. Modern combustion engines stationary power generation applications. They cover a wide capacity range, and have the high st simple cycle efficiency in the industry. At the lower end of ...

[Get a quote](#)

## Pililla Diesel Power Plant, Philippines

The project is being developed by Axia Power Holdings Philippines and Ingrid Power Holdings. The project is currently owned by Ingrid Power Holdings. It is a internal ...

[Get a quote](#)



## List of power stations in Connecticut

This is a list of electricity-generating power stations in the U.S. state of

Connecticut, sorted by type and name.  
In 2023, Connecticut had a total summer capacity of 9,936 MW through all of ...

[Get a quote](#)

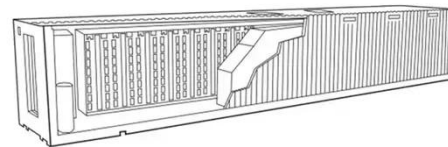


---

## Fossil fuel power station

A fossil fuel power station is a thermal power station that burns fossil fuel, such as coal, oil, or natural gas, to produce electricity. Fossil fuel power stations have ...

[Get a quote](#)



---

## 1-2 Internal Combustion Power Plant

The document discusses internal combustion engines, specifically reciprocating internal combustion engines. It describes the basic workings of a four-stroke engine, including the ...

[Get a quote](#)

---

## At 573MW, among the largest diesel power plants

The IPP3, said to be the world's largest internal combustion engine (ICE) power plant, was recently inaugurated at the

plant site near Amman, Jordan. The plant is powered by ...

[Get a quote](#)



## Chap 8: Internal Combustion Engine Power Plant , PPTX

The document discusses internal combustion engines and their thermodynamic cycles. It provides details on: - The basic workings of internal combustion engines in which chemical energy from ...

[Get a quote](#)

## Natural gas-fired reciprocating engines are being deployed more ...

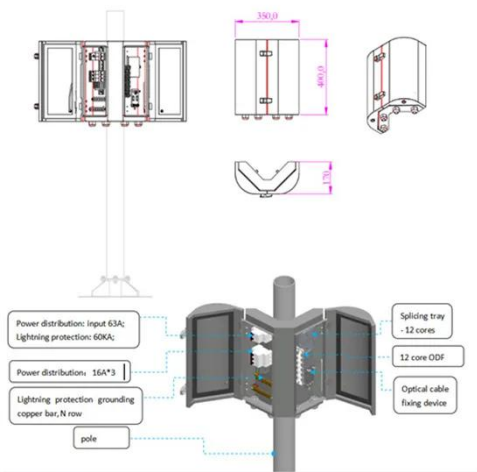
Pearsall Power Plant, located near San Antonio, is a 202-MW plant equipped with 24 natural gas-fired reciprocating engines, each providing 8.4 MW of capacity. The plant came ...

[Get a quote](#)



## The need for flexible internal combustion engine (ICE) power

...



**STUDY OF INTERNAL COMBUSTION ENGINE (ICE) POWER PLANTS IN VIETNAM'S POWER SYSTEM** This study introduces a sustainable, reliable, and affordable type of power ...

[Get a quote](#)

## All-Electric Vehicles

All-electric vehicles (EVs) run on electricity only. They are propelled by an electric motor (or motors) powered by rechargeable battery packs. EVs have several advantages over vehicles ...



[Get a quote](#)



## The US Natural Gas Compression Infrastructure: Opportunities for

Internal combustion spark ignited, four cylinder unit (1700 bhp supercharged) running at 125 rpm. Power cylinders are horizontal-opposing. Most of these units (Cooper and Worthington) have ...

[Get a quote](#)

## Internal combustion engine

OverviewHistoryEtymologyApplicationsClassificationReciprocating enginesCombustion turbinesWankel

engines

An internal combustion engine (ICE or IC engine) is a heat engine in which the combustion of a fuel occurs with an oxidizer (usually air) in a combustion chamber that is an integral part of the working fluid flow circuit. In an internal combustion engine, the expansion of the high-temperature and high-pressure gases produced by combustion applies direct force to some component of the engine...



[Get a quote](#)

---



## Engine Power Plants in Modern Power Generation ...

These plants, which utilize internal combustion engines to generate electricity, are transforming how we think about energy production. ...

[Get a quote](#)

---

## 1-2 Internal Combustion Power Plant

The document discusses internal combustion engines, specifically reciprocating internal combustion engines. It describes the basic workings of a four-stroke ...



[Get a quote](#)

---

## Internal Combustion Power Station



Internal Combustion Power Station As of the end of FY2023 (Note) Internal Combustion Power Station : Power stations that generate electricity using internal combustion engines, such as ...

[Get a quote](#)

## The Efficiency of Power Plants of Different Types

Natural Gas fired (including LNG fired) power plants account for almost 20 % of the world's electricity generation. These power plants use Gas Turbines or Gas Turbine based combined ...



[Get a quote](#)



## World's largest engine power plant by Wärtsilä to be ...

The inauguration of IPP3, the world's largest internal combustion engine (ICE) power plant, takes place today at the plant site near Amman, ...

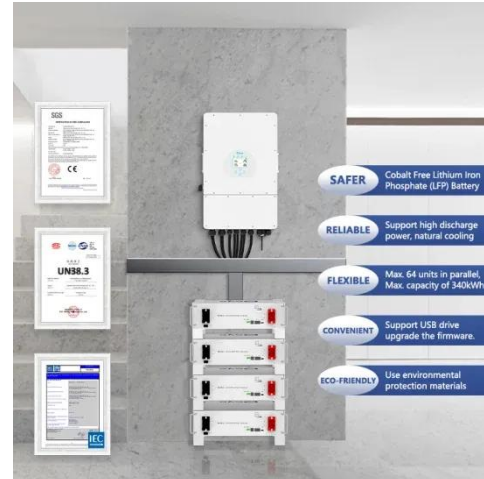
[Get a quote](#)

## Power Generation Technologies

The generating facilities covered in this document include combustion turbines, boilers, combined cycle, coal, nuclear,

reciprocating internal combustion engines, hydroelectric, wind, solar, ...

[Get a quote](#)



## Natural gas-fired reciprocating engines are being ...

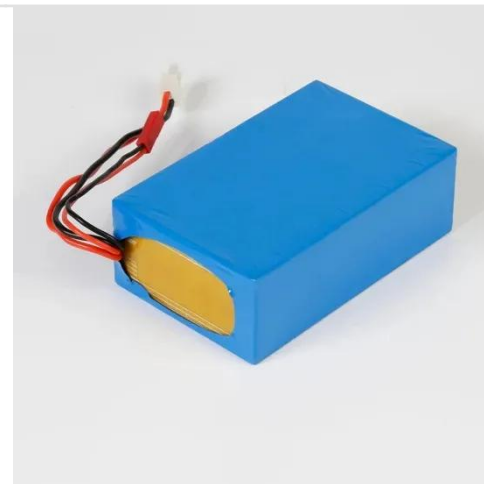
Pearsall Power Plant, located near San Antonio, is a 202-MW plant equipped with 24 natural gas-fired reciprocating engines, each providing ...

[Get a quote](#)

## Wärtsilä to supply RICE engines for New Mexico plant ...

Wärtsilä will supply the reciprocating internal combustion engines (RICE) for an 18 MW expansion of an existing natural gas-fired plant in ...

[Get a quote](#)



## Engine Power Plants in Modern Power Generation Solutions

These plants, which utilize internal combustion engines to generate electricity, are transforming how we



think about energy production. Engine power plants are playing an ...

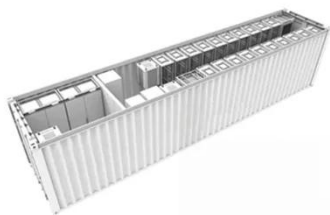
[Get a quote](#)

---

## Basic Information for Stationary Engines , US EPA

What Are Stationary Internal Combustion Engines? Stationary internal combustion engines use pistons that alternatively move back and forth to convert pressure into rotating ...

[Get a quote](#)



## Chap 8: Internal Combustion Engine Power Plant

The document discusses internal combustion engines and their thermodynamic cycles. It provides details on: - The basic workings of internal combustion ...

[Get a quote](#)

---

## Why do power stations use internal combustion ...

Power stations of all shapes and sizes use internal combustion engines and turbochargers, either as backup

solutions, or to generate power ...

[Get a quote](#)



Display screen  
Linux operation system  
quad-core processors  
smooth and stable system



## List of power stations in New York

This is a list of electricity-generating power stations in the U.S. state of New York, sorted by type and name. A more complete list can be found on the NYISO website in the planning data and ...

[Get a quote](#)

## Contact Us

For catalog requests, pricing, or partnerships, please visit:  
<https://www.zenius.co.za>