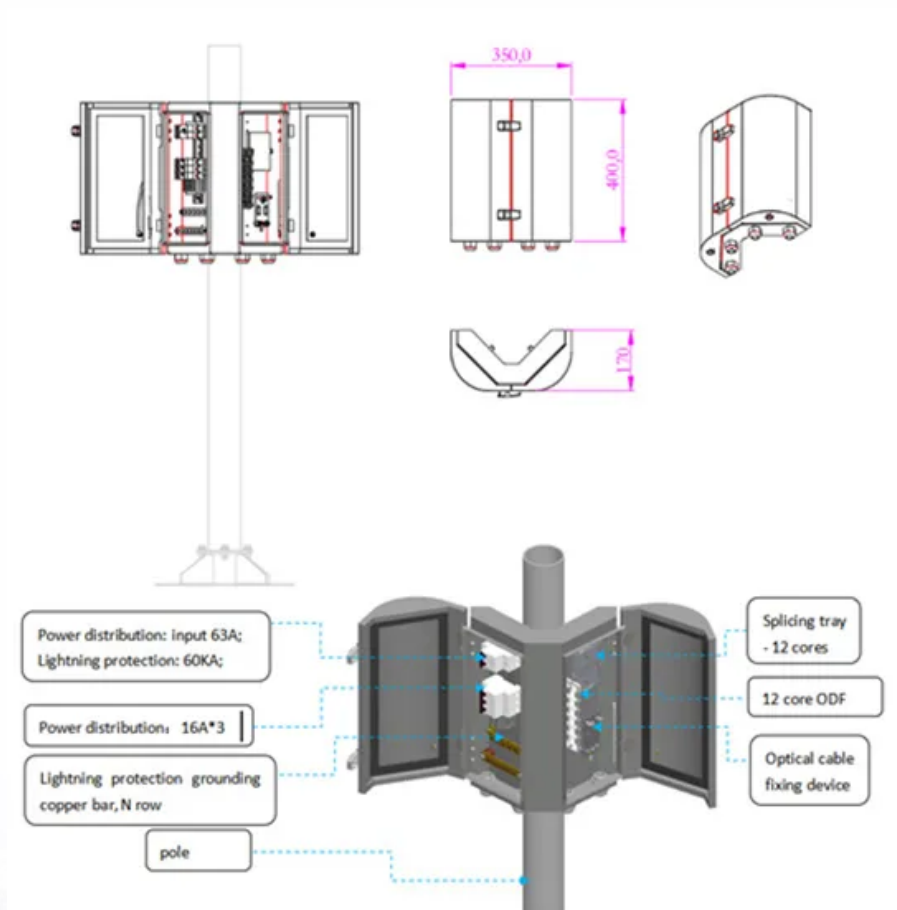


SolarMax Energy Systems

How to connect wind power to the grid



Overview

Most utilities and other electricity providers require you to enter into a formal agreement with them before you interconnect your wind turbine with the utility grid. In states that have retail competition for electricity service (e.g., your utility operates the local wires, but you have a choice of electricity provider) you.

Whether or not your wind turbine is connected to the utility grid, the installation and operation of the wind turbine is probably subject to the electrical codes that your local.

Some utilities require small wind turbine owners to maintain liability insurance in amounts of \$1 million or more. Utilities consider these.

Customer charges can take a variety of forms, including interconnection charges, metering charges, and standby charges, among others. You should not hesitate to question any.

An indemnity is an agreement between two parties where one agrees to secure the other against loss or damage arising from some act or.

Modern wind turbines use power electronic converters to connect to the grid. These devices allow for variable speed operation and improved grid compatibility. Back-to-back converters decouple the generator from the grid. Can a wind turbine be connected to a utility grid?

Whether or not your wind turbine is connected to the utility grid, the installation and operation of the wind turbine is probably subject to the electrical codes that your local government (city or county) or in some instances your state government has in place.

How does a wind turbine get to the grid?

Understanding how electricity made from a wind turbine gets to the grid requires knowing the function of an inverter in such a setup first. The generator associated with a wind turbine produces direct current (DC). It's necessary to convert the power to alternating current (AC) before it powers a home or gets sent to the grid.

Can a wind farm be connected to the grid?

Despite being a sustainable solution, connecting a wind farm to the grid involves a number of technical and economic complexities. These challenges focus mainly on the efficient integration of intermittent energy generated by wind turbines.

How do wind turbines work?

Modern wind turbines use power electronic converters to connect to the grid. These devices allow for variable speed operation and improved grid compatibility. Back-to-back converters decouple the generator from the grid. This lets turbines operate at their optimal speed while maintaining grid frequency.

How can wind energy grid integration be improved?

Energy storage systems like batteries help smooth out wind power fluctuations. They store excess energy when wind is strong and release it when needed. Smart inverters also help regulate voltage and frequency. What strategies exist for improving wind energy grid integration?

Improved wind forecasting is a key strategy.

How do grid operators manage wind?

Grid operators must balance supply and demand in real-time. This requires careful planning and advanced forecasting tools. Sudden changes in wind speed can cause power fluctuations. Grid systems need to be flexible to handle these variations. Backup power sources may be needed to maintain stability during low wind periods.

How to connect wind power to the grid



Wind Turbine & Solar Panel Combinations: A Guide to Hybrid ...

If your goal is to live entirely free of the power grid, you will have to balance your power demands with the output of your renewable power system. This means reducing ...

[Get a quote](#)

The Ultimate Guide to Understanding Wind Turbine ...

A wind turbine and solar panel wiring diagram is a visual representation of how to connect a wind turbine and solar panel system to an electrical grid. This ...

[Get a quote](#)



How To Connect A Wind Turbine To The Electrical Grid?

There are two main ways to connect wind turbines to the grid: direct connection and indirect connection. Direct connection involves connecting the wind turbine to the grid ...

[Get a quote](#)

Wind Energy Grid Integration: Overcoming Challenges and ...

Wind energy grid integration raises important questions about stability, technology, and management strategies. The following FAQs address key issues in incorporating wind ...

[Get a quote](#)



WIND AND SOLAR ON THE POWER GRID: MYTHS AND ...

Wind and solar are inherently more variable and uncertain than the traditional dispatchable thermal and hydro generators that have historically provided a majority of grid-supplied ...

[Get a quote](#)

How are wind farms connected to the electricity grid?

One of the most frequently asked questions when looking into how they work is how they manage to connect the generated energy to the electrical grid. The ...

[Get a quote](#)



How Wind Turbines Are Connected to the Power Grid

In this article, we'll explore how wind turbines are connected to the power grid, the components involved in this

process, and the challenges and solutions related to this integration.

[Get a quote](#)

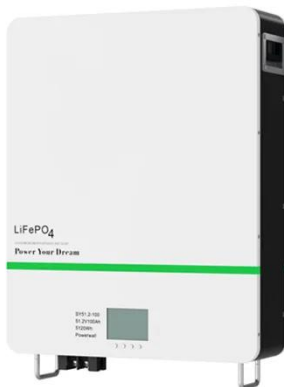


How can I connect? , National Grid

We connect various types of generation technology: onshore and offshore wind farms, solar farms, battery storage, tidal power, nuclear and gas powered generators.



[Get a quote](#)



What Is a Grid-Connected Wind Turbine System?

How Does Wind-Generated Electricity Reach the Grid? Understanding how electricity made from a wind turbine gets to the grid requires knowing the function of an ...

[Get a quote](#)

How to Connect Your Wind Turbine to the Grid

This comprehensive guide will walk you through the essential steps and considerations involved in connecting

your wind turbine to the grid. Harnessing the power of ...

[Get a quote](#)



4 Key Steps in Grid Connection, Commissioning, and ...

Our team conducts thorough assessments to determine the best connection points, accounting for factors such as voltage compatibility, ...

[Get a quote](#)

How to connect a PV solar system to the utility grid

The purpose of this article is to give you a basic understanding of the concepts and rules for connecting a solar panel system to the utility grid and the household electrical box or meter. ...

[Get a quote](#)



4 Key Steps in Grid Connection, Commissioning, and Maintenance for Wind

Our team conducts thorough



assessments to determine the best connection points, accounting for factors such as voltage compatibility, transmission infrastructure, and grid ...

[Get a quote](#)

How Wind Energy Became Integral to the Modern Grid

To quantify the impacts of large amounts of wind energy and solar power on the grid, the studies examined system production costs (e.g., fuel ...

[Get a quote](#)



How to Connect a Wind Turbine to a Battery

Discover the essential steps for connecting a wind turbine to a battery, ensuring efficient power generation and storage for off-grid systems.

[Get a quote](#)

On Grid Wind Turbine Solutions: Efficient & Cost-Effective Energy

Medium-voltage grid connection is used for medium-scale on grid wind turbines

in wind farms, which connect to regional power grids. Engineers use step-up transformers to ...

[Get a quote](#)



How To Connect A Wind Turbine To The Electrical Grid?

There are two main ways to connect wind turbines to the grid: direct connection and indirect connection. Direct connection involves ...

[Get a quote](#)

How are wind farms connected to the electricity grid?

One of the most frequently asked questions when looking into how they work is how they manage to connect the generated energy to the electrical grid. The process may seem complicated, but ...

[Get a quote](#)



Can I Connect Wind Turbine to the Utility Grid?

Small wind energy systems can be connected to the electricity distribution



system and are called gridconnected systems. A grid-connected wind turbine can reduce your ...

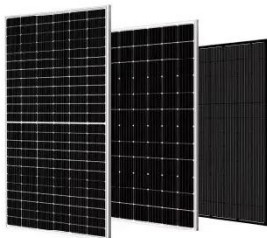
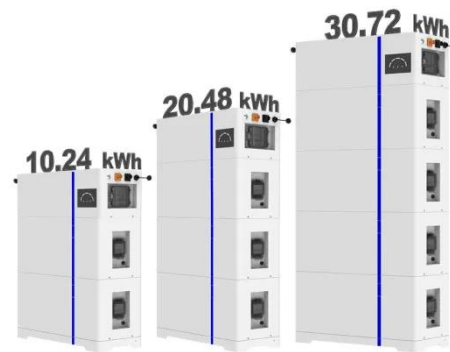
[Get a quote](#)

EN_Connecting wind power to the grid

Depending on the operator's requirements, different configurations of medium-voltage GIS allow the individual wind turbines to be safely connected to the wind farm's own power grid.

[Get a quote](#)

ESS



Connecting a Wind Generator to the Home Grid: A Step-by-Step ...

Connecting a wind generator to your home grid is a great way to achieve this. This step-by-step guide will walk you through the process, ensuring a smooth integration between ...

[Get a quote](#)

Wind and solar projects are growing, but many can't actually connect ...

Tons of green energy projects, both wind and solar, want to connect to the grid. But they're running into a surprising obstacle.

[Get a quote](#)



Contact Us

For catalog requests, pricing, or partnerships, please visit:
<https://www.zenius.co.za>