

SolarMax Energy Systems

How much power storage does the factory use

215kWh

8,000+ Cycles Lifetime

IP54 Protection Degree



Overview

How much electricity does a manufacturing facility use?

On average, manufacturing facilities use 95.1 kilowatt-hours (kWh) of electricity and 536,500 Btu of natural gas per square foot each year, though actual consumption varies widely across subsectors. How many kWh does the average business use?

.

How much energy does manufacturing use a year?

It consumed approximately 27,000 trillion Btu that year—much of it to fuel manufacturing processes. On average, manufacturing facilities use 95.1 kilowatt-hours (kWh) of electricity and 536,500 Btu of natural gas per square foot each year, though actual consumption varies widely across subsectors.

How much power is needed to run a factory?

The power needed to run a factory largely depends on the type of manufacturing processes involved. For instance, industries that require a lot of heat, such as cement making, aluminium smelting, and steel production, are significant consumers of electricity.

How many kilowatts can a Gigafactory produce?

A GWh is equivalent to a steady power of one billion kilowatt running for one hour. In other words, each one of our gigafactory will be capable of producing the equivalent of 40 billion KWh. Wow, you may say, but. so what?

To help you put this number in perspective, we've compared 1 GWh to things that are part of our daily lives.

Would a large car manufacturing plant need more electricity?

A large car manufacturing plant would likely have a greater need for more

electricity than a smaller distribution center. Most industrial properties — especially newer ones that have more intensive energy requirements — use a three-phase power system.

How much electricity does a laptop use a day?

For example, a laptop that uses 50 watts for 8 hours a day and has an electricity rate of 11 cents per kilowatt-hour uses 0.4 kWh per day. This translates to an energy cost of 4.4 cents per day, or about a dollar per month.

How much power storage does the factory use



✓ TELECOM CABINET

✓ BRAND NEW ORIGINAL

✓ HIGH-EFFICIENCY

Industrial energy and electricity consumption by sector?

The purpose of this data-file is to aggregate and clean data into the energy and electricity consumption of 180,000 US industrial facilities, according to key ...

[Get a quote](#)

How much electricity do AI generators consume?

How much electricity does AI consume? It's not easy to calculate the watts and joules that go into a single Balenciaga pope. But we're not ...



[Get a quote](#)



51.2V 300AH

How much power do large industrial facilities use? Have any of ...

A plant can use a lot of power, but power may be cheaper than coal or gas (\$/MMBtu) and consequently may be greener. Case in point; It was cheaper to install a 4 5 MW steam ...

[Get a quote](#)

Help me understand the factory : r/mytimeatportia

I got the factory and struggle a bit with how to use it. What do I put into the factory storage? Just raw material or also steel plates, copper wires etc? Does the skill that gives you a 20% ...

[Get a quote](#)



How much does the factory energy storage power supply benefit

By storing energy during low-demand periods, factories can significantly lower their electricity bills. Additionally, these systems enhance energy reliability by providing backup ...

[Get a quote](#)

Where to find explanation of Power info

Power storage batteries and biomass burners can provide additional power on demand. When they're connected to your power grid they will cause the capacity line to rise above your ...

[Get a quote](#)



Our gigafactories will be producing 40 GWh each by 2030. But how much



A GWh is equivalent to a steady power of one billion kilowatt running for one hour. In other words, each one of our gigafactory will be capable of producing the equivalent of 40 ...

[Get a quote](#)

How Much Electricity Does an Industrial Property ...

Electricity requirements for industrial real estate can vary significantly, especially given the function of the property. A large car ...



[Get a quote](#)



Business Energy Advisor , Manufacturing Facilities

On average, manufacturing facilities use 95.1 kilowatt-hours (kWh) of electricity and 536,500 Btu of natural gas per square foot each year, though actual consumption varies ...

[Get a quote](#)

Business Energy Advisor , Manufacturing Facilities

On average, manufacturing facilities use 95.1 kilowatt-hours (kWh) of electricity and 536,500 Btu of natural gas per

square foot each year, though ...

[Get a quote](#)



How Much Power Does RAM Use? Unpacking the Energy ...

In an era where energy efficiency is at the forefront of tech design, understanding the power consumption of computer components is crucial. Among these components, ...

[Get a quote](#)

New to Refined Storage mod, how do I get "power"? : ...

Refined Storage uses RF power to function. RS does not contain any RF generators, so you'll have to add a mod that does. Thermal Expansion, Extra Utilities 2, Immersive Engineering, ...

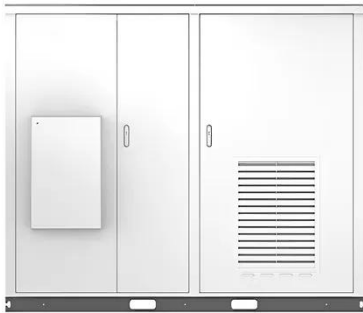
[Get a quote](#)



Manufacturer

The Manufacturer is a building used to automate the production of three or four-ingredient items. The Manufacturer can be overclocked using Power Shards.

Solar



Overclocking increases the ...

[Get a quote](#)

Electricity for Manufacturing

Manufacturing facilities use 95.1 kilowatt-hours (kWh) of electricity and 536,500 Btu of natural gas per square foot each year, according to the EIA. Of course, this varies widely ...

[Get a quote](#)

How much does factory energy storage power supply cost

Investing in factory energy storage also opens avenues for long-term cost savings. While the upfront investment can be substantial, the potential reduction in utility bills over time ...

[Get a quote](#)

How many kWh does a factory use per year?

On average, manufacturing facilities use 95.1 kilowatt-hours (kWh) of electricity and 536,500 Btu of natural gas per

square foot each year, though actual consumption varies ...

[Get a quote](#)



Steam Community :: Guide :: Batteries & How to Use ...

Solution To make sure that your (Small) Makeshift Batteries have enough charge for the night, but not waste too much power from putting them ...

[Get a quote](#)

Electricity in factories

High voltages like 11KV, 33KV, 66KV, or 132KV from the generating stations are supplied through the main Grid to the respective industries or factories. In each factory or Industry, substations ...

[Get a quote](#)



Our gigafactories will be producing 40 GWh each by ...

A GWh is equivalent to a steady power of one billion kilowatt running for one hour. In other words, each one of our



gigafactory will be ...

[Get a quote](#)

How Much Electricity Does a Small Factory Use? A Comparative ...

But how much electricity does a small factory actually use? This question is not as straightforward as it might seem, as the answer can vary dramatically depending on the type of factory, its ...



[Get a quote](#)



Mapping energy consumption in food manufacturing

A Japanese sugar factory reported that 65% of its thermal energy was used by the evaporative crystalliser. Melting and centrifugal drying consumed 25% and 22% of total ...

[Get a quote](#)

Energy Storage in Factory Applications: Powering the Future of ...

Your factory's assembly line suddenly stops because of a blackout. Cue the dramatic music! But wait - your energy storage system swoops in like a superhero, keeping ...

[Get a quote](#)



Electricity explained Electricity generation, capacity, and sales in

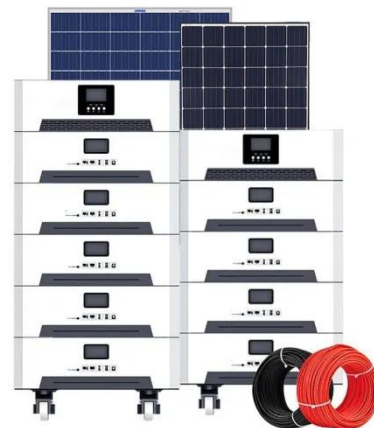
Capacity: the maximum amount of electric power (electricity) that a power plant can supply at a specific point in time under specific conditions. Sales: the amount of electricity sold ...

[Get a quote](#)

How Much Electricity Does an Industrial Property Require?

Electricity requirements for industrial real estate can vary significantly, especially given the function of the property. A large car manufacturing plant would likely have a greater ...

[Get a quote](#)



Contact Us

For catalog requests, pricing, or partnerships, please visit:

<https://www.zenius.co.za>