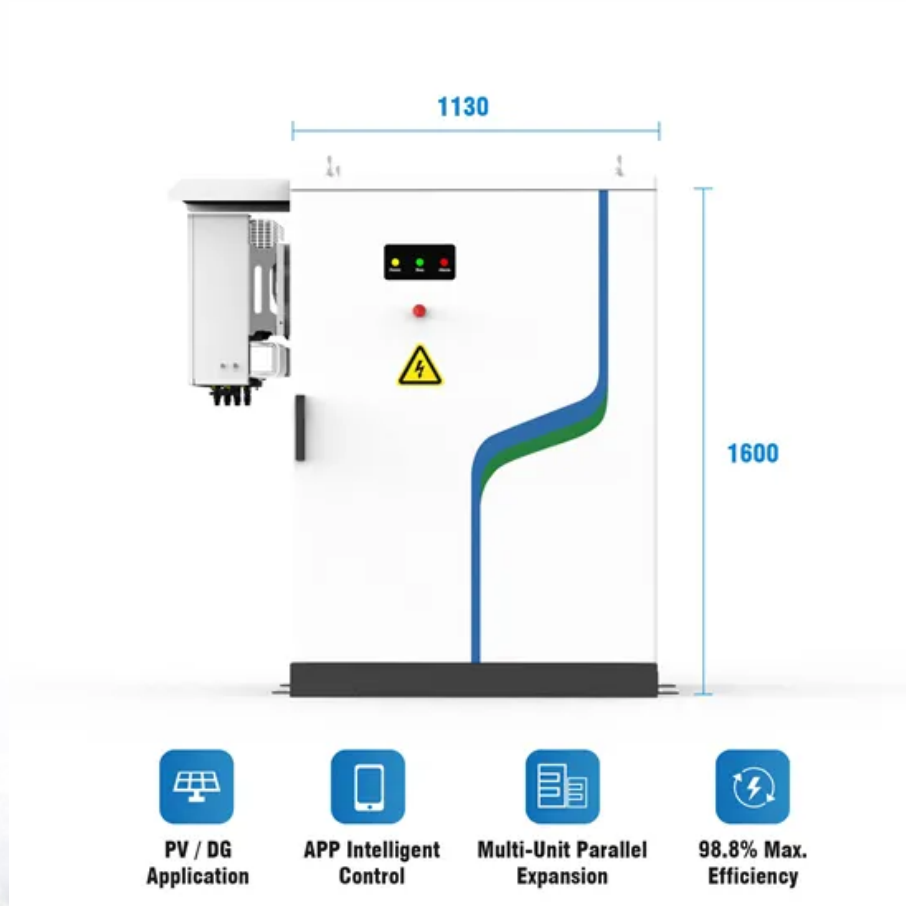


## SolarMax Energy Systems

# How much power does the battery support for base stations



## Overview

---

How much power does a cellular base station use?

This problem exists particularly among the mobile telephony towers in rural areas, that lack quality grid power supply. A cellular base station can use anywhere from 1 to 5 kW power per hour depending upon the number of transceivers attached to the base station, the age of cell towers, and energy needed for air conditioning.

Which battery is best for telecom base station backup power?

Among various battery technologies, Lithium Iron Phosphate (LiFePO<sub>4</sub>) batteries stand out as the ideal choice for telecom base station backup power due to their high safety, long lifespan, and excellent thermal stability.

How do I choose a base station?

Key Factors: Power Consumption: Determine the base station's load (in watts). Backup Duration: Identify the required backup time (hours). Battery Voltage: Select the correct voltage based on system design. Efficiency & Discharge Rate: Consider battery efficiency and discharge characteristics.

What makes a telecom battery pack compatible with a base station?

Compatibility and Installation Voltage Compatibility: 48V is the standard voltage for telecom base stations, so the battery pack's output voltage must align with base station equipment requirements. Modular Design: A modular structure simplifies installation, maintenance, and scalability.

How do you calculate battery capacity?

Formula: Capacity (Ah)=Power (W)×Backup Hours (h)/Battery Voltage (V)  
Example: If a base station consumes 500W and needs 4 hours of backup at 48V, the required capacity is:  $500W \times 4h / 48V = 41.67Ah$  Choosing a battery with a slightly higher capacity ensures reliability under real-world conditions.

Why is backup power important in a 5G base station?

With the rapid expansion of 5G networks and the continuous upgrade of global communication infrastructure, the reliability and stability of telecom base stations have become critical. As the core nodes of communication networks, the performance of a base station's backup power system directly impacts network continuity and service quality.

## How much power does the battery support for base stations

---



### How much power does my Starlink need?

Idle: 45W The power utilization can vary depending on the temperature, location, and utilization of the Starlink. Note that the specs are based on AC input power averages. The power utilization ...

[Get a quote](#)

### What are base station energy storage batteries used for?

Innovations in battery technologies, such as lithium-sulfur or solid-state batteries, promise higher energy densities and improved lifespan, thereby enhancing the operational ...



[Get a quote](#)



### How many tons of energy storage batteries are used ...

To apply an accurate energy storage metric, one should delve into the average capacity of batteries deployed in these installations. Roughly, ...

[Get a quote](#)

## Installation and hardware ,

## Base Help Center

What does a typical Base system installation look like? How does the Base system interact with the generator interlock on the main panel? How do I connect my battery to my home WiFi ...

[Get a quote](#)



50KW modular power converter



## Base Single Ground Mounted System Specifications , Home Battery ...

There's no need to turn off the battery or do anything specific to the battery. Keep in mind that Base systems only support up to 200 amps, so if you plan to upgrade your main panel to ...

[Get a quote](#)

## Telecom Base Station Backup Power Solution: Design ...

Discover the 48V 100Ah LiFePO4 battery pack for telecom base stations: safe, long-lasting, and eco-friendly. Optimize reliability with our ...

[Get a quote](#)



## What Size Portable Power Station Do I Need? An Ultimate Guide

Featuring a robust 3072Wh capacity, it



provides 3600W power output, designed for extended outdoor activities, emergency moments, and off-grid adventures. Equipped with a ...

[Get a quote](#)

## Best (and Worst) Portable Power Stations

Portable power stations are essential for camping, emergencies, and off-grid living, but not all models perform the same. Learn about the best and ...

[Get a quote](#)



## The Best Portable Power Stations

What is the difference between a power bank and a portable power station? Size is the main difference between the best power banks and the best portable power stations.

[Get a quote](#)

## Telecom Base Station Backup Power Solution: Design Guide for ...

Discover the 48V 100Ah LiFePO4 battery pack for telecom base stations: safe,

long-lasting, and eco-friendly. Optimize reliability with our design guide.

[Get a quote](#)



## What Size Battery for Base Station? , Huijue Group E-Site

Recent GSMA data reveals that 23% of network outages stem from improper battery sizing, costing operators \$4.7 billion annually. Let's dissect this technical tightrope walk. The 2023 ...

[Get a quote](#)

## What Are the Critical Aspects of Telecom Base Station Backup ...

Backup batteries must supply sufficient energy to maintain base station operations during power outages. Higher capacity (measured in ampere-hours) and energy density ...



[Get a quote](#)

## How to Determine the Right Battery Capacity for Telecom Base ...





Example: If a base station consumes 500W and needs 4 hours of backup at 48V, the required capacity is:  
 $500W \times 4h / 48V = 41.67Ah$  Choosing a battery with a slightly higher ...

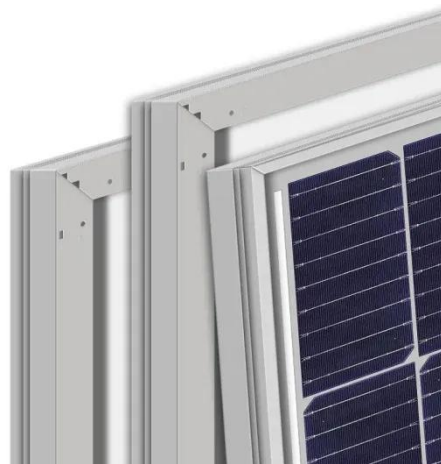
[Get a quote](#)

---

## Energy Management of Base Station in 5G and B5G: Revisited

Since mmWave base stations (gNodeB) are typically capable of radiating up to 200-400 meters in urban locality. Therefore, high density of these stations is required for actual 5G deployment, ...

[Get a quote](#)



---

## Base Power Battery Specifications , Compare Models

Compare Base Power's home battery systems - from our streamlined 20kWh wall-mount to our advanced 50kWh ground-mount solution. View complete ...

[Get a quote](#)

---

## How to Determine the Right Battery Capacity for Telecom Base Stations



Example: If a base station consumes 500W and needs 4 hours of backup at 48V, the required capacity is:  
 $500W \times 4h / 48V = 41.67Ah$  Choosing a battery with a slightly higher ...

[Get a quote](#)

## ESS



## How to Select the Best ESTEL Battery Backup for Base Stations

Base stations have varying energy demands depending on their size, location, and the telecommunications equipment they support. You need to calculate the total power ...

[Get a quote](#)

## How many tons of energy storage batteries are used in base stations

To apply an accurate energy storage metric, one should delve into the average capacity of batteries deployed in these installations. Roughly, these batteries range from 5 ...

[Get a quote](#)



## What are base station energy storage batteries used for?



Innovations in battery technologies, such as lithium-sulfur or solid-state batteries, promise higher energy densities and improved lifespan, ...

[Get a quote](#)

## Understanding Backup Battery Requirements for Telecom Base Stations

Telecom base stations require reliable backup power to ensure uninterrupted communication services. Selecting the right backup battery is crucial for network stability and ...

[Get a quote](#)



**ESS**



## Base Single Ground Mounted System Specifications , Home

...

There's no need to turn off the battery or do anything specific to the battery. Keep in mind that Base systems only support up to 200 amps, so if you plan to upgrade your main panel to ...

[Get a quote](#)

## Battery storage power station - a comprehensive guide

This is where battery storage power stations come into play. These facilities store electrical energy for later use, providing essential services such as grid

...

[Get a quote](#)



## Understanding Backup Battery Requirements for ...

Telecom base stations require reliable backup power to ensure uninterrupted communication services. Selecting the right backup battery is ...

[Get a quote](#)

## Base Power Battery Specifications , Compare Models

Compare Base Power's home battery systems - from our streamlined 20kWh wall-mount to our advanced 50kWh ground-mount solution. View complete technical specifications.

[Get a quote](#)



## The 10 best power stations of 2025: Tested and reviewed!

Power stations come in all sizes, weights, prices, and with all kinds of different

features. How can you tel which is the best power station?

[Get a quote](#)



---

## Contact Us

For catalog requests, pricing, or partnerships, please visit:  
<https://www.zenius.co.za>