



Overview

To ensure optimal performance of your water pump, you need solar panels that match the wattage requirements of your pump. Typically, 100 to 375-watt panels are used, depending on the pump's specifications and whether it's single-phase or three-phase. How much wattage does a solar water pump need?

Let's say you want to pump water from a depth of 50 feet at a rate of 5 GPM using a 12V pump that is 70% efficient. The region receives an average of 6 hours of sunlight per day, and you want to use a 12V solar panel and battery. Using the Solar Water Pump Sizing Calculator, the minimum solar panel wattage required is calculated as follows:

How much power does a solar pump use?

There are two main classes of pumps: Pumps Designed for Solar: These pumps are slightly more efficient and can run on anywhere from 200 watts (two 100-watt panels) to around 800 or 1,200 watts of power. They typically range from a quarter of a horsepower up to around one horsepower. Classic AC Pumps:.

How many solar panels do I need to run a pump?

The number of solar panels needed to run a pump depends on the type of pump you have. There are two main classes of pumps: Pumps Designed for Solar: These pumps are slightly more efficient and can run on anywhere from 200 watts (two 100-watt panels) to around 800 or 1,200 watts of power.

How many solar panels does a well pump need?

3.81 kW 250 watts = 18 panels Based on our calculations and real-world conditions, you would need approximately 18 solar panels, each rated at 300 watts, to sufficiently power your well pump while accounting for various efficiency losses. Understanding the energy needs of your water pump is critical.

What type of solar panel do I need for my water pump?

For water pumps, monocrystalline and polycrystalline panels are generally recommended due to their higher efficiency and reliability. The power requirement of your water pump is one of the most critical factors in determining the type of solar panel you need. The power requirement is usually measured in watts (W) and depends on factors such as:

How do you size solar panels for a well pump?

Solar panels, however, provide power in watts (or kilowatts). Thus, the first task in sizing solar panels for your well pump is to convert the pump's horsepower into a comparable unit, typically watts or kilowatts. Let's use a 3hp motor as an example to explain the process. Using the conversion factor of 0.746, the calculation becomes:

How many watts is suitable for a solar pump



How many watts does a solar self-priming pump require?

In such cases, opting for a pump that ranges from 500 watts up to 1,000 watts may be required. Understanding the relationship between flow rates and wattage is vital for ...

[Get a quote](#)

What Size Solar Panel To Charge 24v Battery? (incl.

Summary You need around 280 watts of solar panels to charge a 24V 100ah lead-acid battery from 50% depth of discharge in 6 peak sun ...

[Get a quote](#)



Solar Panel Size Calculator , Check Battery Charge Duration

The result displays the solar panel size in watts, helping you to understand the amount of solar power needed to charge your battery within the specified time frame.

[Get a quote](#)

Solar Panels for Pool Pumps:

2025 Guide

Calculating the energy demand of pool pumps is a critical first step in designing an efficient solar-powered system. This calculation involves assessing the pump's wattage--typically ranging ...

[Get a quote](#)



How Many Solar Panels Do You Need to Run a Water Pump?

4 days ago· To run a water pump on solar, multiply the pump's power by 1.5 to calculate the total solar panel wattage needed. For example, a 1000W pump requires at least 1500W of solar ...

[Get a quote](#)

What Size Solar Panel To Use For A Well Pump? All ...

It takes anywhere from 750 watts right up to 16,000 watts to run a well pump. The number varies depending on the size of the motor in the ...

[Get a quote](#)



What Size Solar Panel To Use For A Well Pump? All You Need ...

It takes anywhere from 750 watts right up to 16,000 watts to run a well pump.

The number varies depending on the size of the motor in the pump. The size of the motor is ...

[Get a quote](#)



How Solar Pump Inverters Can Efficiently Run Water ...

For instance, a 1 horsepower (HP) water pump typically requires around 1200 watts of solar power, which translates to about twelve 100-watt ...

[Get a quote](#)



How Many Panels Do You Need To Run A Solar Pump? , Demystifying Solar

For a 1/2 horsepower pump, you'll need about eight solar panels or 800 watts of power. If you need a larger system of up to 100 horsepower, you'll require around 320 panels (each 375 ...

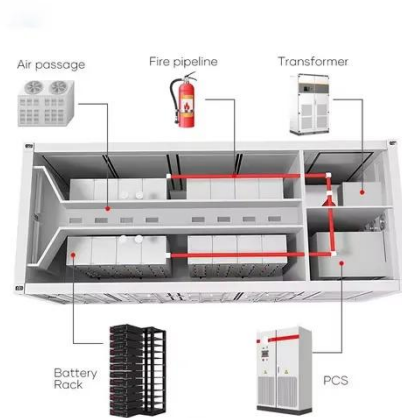
[Get a quote](#)

How Many Solar Panels Do I Need to Run a Water Pump?

Solar-powered water pumps are cost-effective and durable. But how many

solar panels do I need to run a water pump? Moreover, solar-powered water pumps can increase ...

[Get a quote](#)



How Many Solar Panels Do You Need to Run a 1 HP Water Pump?

To run a 1 horsepower (HP) water pump, you usually need twelve 100-watt (W) solar panels, for a total of 1200W. This depends on factors like the wattage of the solar panels and the efficiency ...

[Get a quote](#)

How Many Solar Panels Do You Need to Run a 1 HP ...

To run a 1 horsepower (HP) water pump, you usually need twelve 100-watt (W) solar panels, for a total of 1200W. This depends on factors like the wattage of ...

[Get a quote](#)



What Size Solar Panel for Well Pump: Comprehensive Sizing Guide

Following this comprehensive sizing



guide, you can accurately determine the solar array size needed to match your well pump's demands. We'll walk through critical calculations, ...

[Get a quote](#)

Guide to Solar Water Pump Sizing

Sizing a Solar Pump System Step 1: Determine whether a submersible pump or surface pump is best. This is based on the nature of the water source. Submersible pumps are sometimes ...



[Get a quote](#)



Solar Water Pump Sizing Calculator

The Solar Water Pump Sizing Calculator is an essential tool for individuals who rely on solar power to pump water. By providing the required input data, users can accurately calculate the ...

[Get a quote](#)

How To Calculate Solar Power Water Pump

For a 1 HP pump, typically twelve 100-watt solar panels are required, totaling 1200 watts, with single-phase

pumps needing more panels than three-phase pumps. Depending on ...

[Get a quote](#)



Solar Generators for Well Pumps: Sizing Guide (With ...

Knowing your well pump's power requirements (starting surge and running watts) is essential to find out how big your solar generator needs to ...

[Get a quote](#)

How many watts does a solar self-priming pump require?

In such cases, opting for a pump that ranges from 500 watts up to 1,000 watts may be required. Understanding the relationship between flow ...

[Get a quote](#)



What Type of Solar Panel Do You Need for a Water ...

To ensure optimal performance of your water pump, you need solar panels that match the wattage requirements of your



pump. Typically, 100 to ...

[Get a quote](#)

What Size Solar Panel To Use For A Well Pump? All ...

How Much Power Does A Well Pump Use?
It takes anywhere from 750 watts right up to 16,000 watts to run a well pump.
The number varies ...



[Get a quote](#)



- ☒ IP65/IP55 OUTDOOR CABINET
- ☒ OUTDOOR MODULE CABINET
- ☒ OUTDOOR 5G BASE STATION CABINET
- ☒ WATERPROOF

PONDS - RPS Solar Pumps , America's #1 Solar Well Pumps

To calculate the days required to fill a pond with your solar pump, divide the numbers in the table on the right by the estimated Gallons Per Day for your selected pump (assuming your well can ...

[Get a quote](#)

How many watts does the solar booster pump have? , NenPower

The wattage of a solar booster pump

typically varies based on several factors such as the design, application, and size of the pump. 1. Most solar booster pumps range between ...

[Get a quote](#)



How Many Watt Solar Panel to Charge 12 Volt Battery: Calculate ...

Unlock the power of solar energy with our comprehensive guide on how many watts are needed to charge a 12-volt battery. Learn about different solar panel types, key ...

[Get a quote](#)

How to select a solar pump for your borehole.

Determine the solar panel capacity : Solar panels have a capacity measured in watts (W). To choose panels that can generate enough power to meet your ...

[Get a quote](#)



What Size Inverter Do I Need?

Here is a brief example (watt requirements vary): Lights - About 200 watts Refrigerator - About 1000 watts

Radio - About 50 watts Heater - About 1000 ...

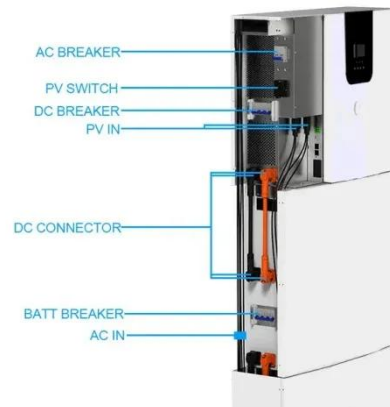
[Get a quote](#)



Solar Water Pump Sizing Calculator

Following this comprehensive sizing guide, you can accurately determine the solar array size needed to match your well pump's demands. We'll walk through critical calculations, ...

[Get a quote](#)



What Type of Solar Panel Do You Need for a Water Pump?

To ensure optimal performance of your water pump, you need solar panels that match the wattage requirements of your pump. Typically, 100 to 375-watt panels are used, ...

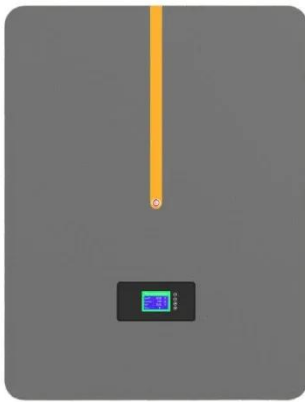
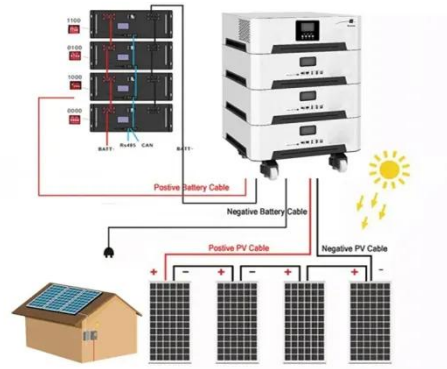
[Get a quote](#)

How Many Panels Do You Need To Run A Solar Pump?

For a 1/2 horsepower pump, you'll need about eight solar panels or 800 watts of power. If you need a larger system of up

to 100 horsepower, you'll require around 320 panels (each 375 ...

[Get a quote](#)



How Many Panels Do You Need To Run A Solar Pump? , Demystifying Solar

Pumps specifically designed for solar
Classic AC pumps that can be adapted for solar
Pumps Designed for Solar:
These pumps are slightly more efficient and can run on anywhere from ...

[Get a quote](#)

Contact Us

For catalog requests, pricing, or partnerships, please visit:
<https://www.zenius.co.za>