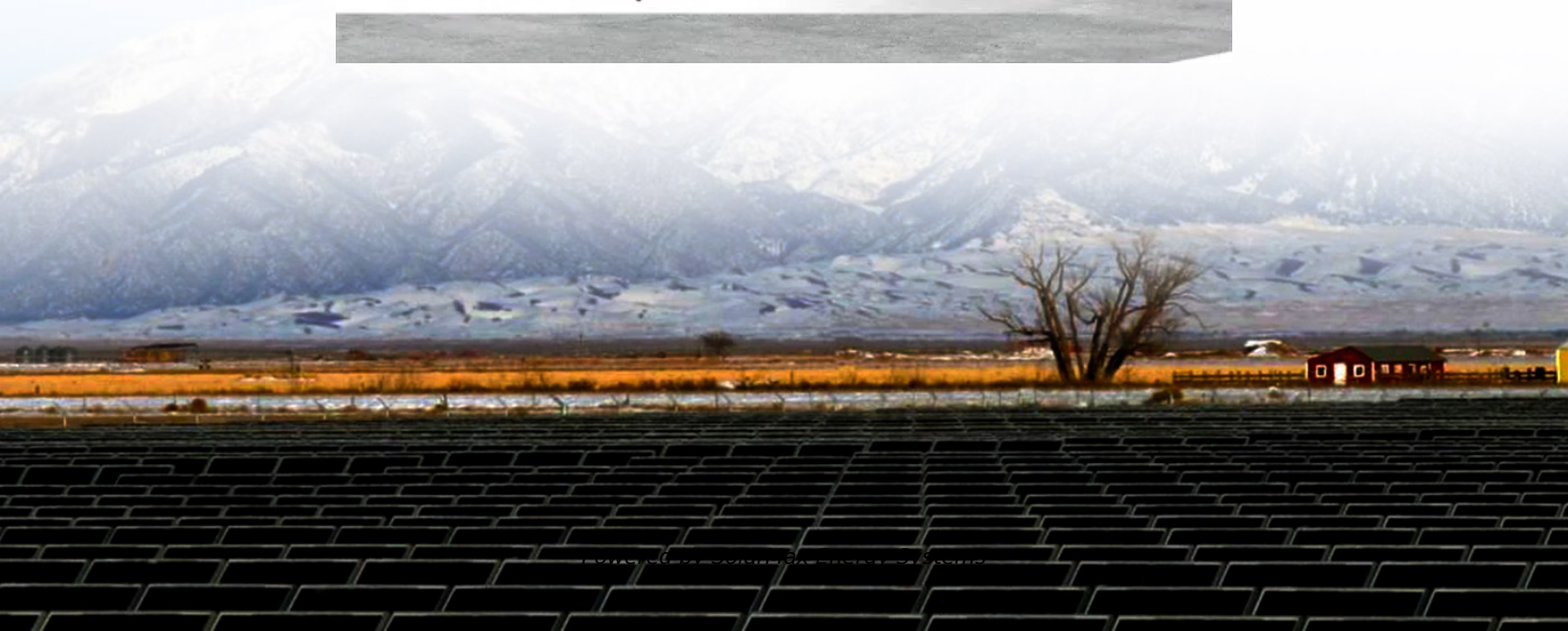


SolarMax Energy Systems

How many cells are in a 36v lithium battery pack



Overview

A 36-volt battery typically contains 18 cells. These cells are arranged in three rows, with each row having six cells. This setup helps the battery deliver the necessary voltage for many uses, such as electric bikes and solar power systems. Each cell adds to the total voltage of the battery. How many cells are in a lithium ion battery?

For example, lead-acid batteries typically have six cells while lithium-ion batteries usually have three or four cells. Each chemistry has its own advantages and disadvantages, so it's important to choose the right one for your needs.

What is a 36 volt lithium battery used for?

The versatility of 36 volt lithium batteries allows them to be used in a variety of applications. Electric vehicles are among the most prominent users of 36 volt lithium batteries. Performance Electric Bikes: Many premium e-bikes utilize these batteries for extended range and higher speeds, appealing to both commuters and leisure riders.

How long does a 36 volt lithium battery last?

36 volt lithium batteries typically have a longer lifespan compared to traditional lead-acid options. Cycle Life: These batteries can endure up to 500 to 2000 charge cycles, significantly outlasting lead-acid batteries, which often last only around 300 to 500 cycles.

How many cells in a 12V battery?

The number of cells in a 12V battery pack can vary depending on the manufacturer and the intended use of the battery. A typical 12V lithium-ion battery pack may contain anywhere from 10 to 20 cells. How Many Cells in a 48V Battery?

A 48V battery typically contains four 12V cells.

How many cells are in a 24v battery?

A 24V battery typically consists of four to six lead-acid cells. Each cell has a voltage of around 2.1V, so when they are connected in series, the total voltage is around 8.4V to 12.6V.

How many cells are in a 48v battery?

A 48V battery typically contains four 12V cells. This number can vary slightly, depending on the manufacturer and the specific type of battery. Each cell has a nominal voltage of 2.1-2.3 V when fully charged. How Many Cells in a 24V Battery?

A 24V battery typically consists of four to six lead-acid cells.

How many cells are in a 36v lithium battery pack



What Is A 36 Volt Li Ion Battery?

A 36V system centers on a nominal 36-volt output, achieved via 10 lithium-ion cells in series (10S). Key features include energy densities of 150-250 Wh/kg and integrated BMS ...

[Get a quote](#)

Determine How Many Cells In A Battery Pack

Use the tables below to get the voltage and cells chemistries used in your battery packs. Battery Voltage / Cell Chemistry Voltage = Number of Cells.
Laptop Battery: 11.1V Li ...



[Get a quote](#)

36v Lithium Battery - NPP POWER

In the case of 36V lithium-ion battery, it typically contains multiple cells connected in series to collectively provide an output voltage of 36 volts. Here are some ...



[Get a quote](#)

Understanding the 36 Volt

Lithium Battery: The ...

To fully appreciate the advantages of a 36 volt lithium battery, it's important to first understand what it is and how it differs from other types of ...

[Get a quote](#)



36V Lithium Battery Pack

Saphiion offers custom 36V lithium battery packs, designed to fit the exact voltage, capacity, and shape needed for your application. Whether you need a custom 18650 or 21700 lithium battery ...

[Get a quote](#)

How Many Cells in a 36 Volt Lithium Battery? A Definitive Guide ...

A 36-volt battery typically contains 18 cells. These cells are arranged in three rows, with each row having six cells. This setup helps the battery deliver the necessary voltage for ...

[Get a quote](#)



How to Calculate the Number of Cells in a Battery? (Described ...



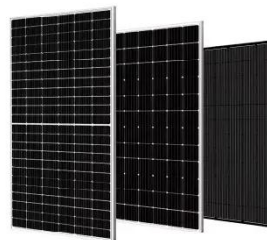
For example, lead-acid batteries typically have six cells while lithium-ion batteries usually have three or four cells. Each chemistry has its own advantages and disadvantages, ...

[Get a quote](#)

30 cell 36v 8Ah, Scooter Battery Packs

Please read the description carefully.
Shipping to Lower 48 USA states only via Ground Shipping. No international shipping including Hawaii, Guam, Puerto

...



[Get a quote](#)



Understanding the Voltage Threshold of a 36V Lithium ...

Discharge Cutoff Voltage: A 36V lithium-ion battery generally has a discharge cutoff voltage of around 30V (3.0V per cell x 10 cells).

[Get a quote](#)

18650 Battery Pack Calculator

To Achieve the expected operating voltage (the 18650 battery pack's voltage). We should connecting the 18650 cells in series to increase the

voltage. For ...

[Get a quote](#)



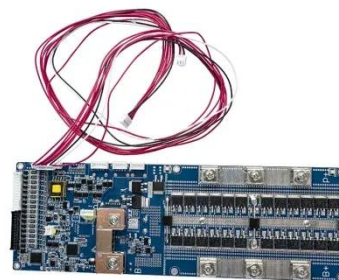
What Is the Usable Voltage Range of a 36V Lithium Battery?

A 36V lithium battery, commonly used in applications such as electric bikes and solar energy systems, consists of multiple cells connected in series, usually totaling 10 cells ...

[Get a quote](#)

36v Lithium Battery - NPP POWER

In the case of 36V lithium-ion battery, it typically contains multiple cells connected in series to collectively provide an output voltage of 36 volts. Here are some key characteristics and ...



[Get a quote](#)

Ebike Battery How Many Cells

Lithium-ion battery cells are nominally rated at 3.6 or 3.7V, meaning to reach 36V nominal, we'll need 10 cells in

series. The industry abbreviation for series is 's', so this pack ...

[Get a quote](#)



36V Lithium Battery Pack: Specifications and Uses

A typical 36V lithium battery pack consists of multiple lithium-ion cells configured to achieve a nominal voltage of approximately 36 volts (often around 38.4 volts when fully charged).



[Get a quote](#)



36V 15Ah (10S6P) Lithium-Ion Battery Pack

36V 15Ah (10S6P) LITHIUM-ION Battery pack provides tremendous energy. The 10S6P format combines ten cells in series for a nominal voltage of 36V and six parallel sets for ...

[Get a quote](#)

Can 36v eBike battery be charged with 36v charger, ...

36v is the battery's nominal voltage, or average voltage over the course of discharging the battery. A 36v battery is

most likely 10S, so its charger will ...

[Get a quote](#)



How to Calculate the Number of Cells in a Battery? (Described ...

Lithium-ion battery cells are nominally rated at 3.6 or 3.7V, meaning to reach 36V nominal, we'll need 10 cells in series. The industry abbreviation for series is 's', so this pack ...

[Get a quote](#)

How Many Cells in a 36 Volt Lithium Battery? A Definitive Guide ...

How Many Cells Are Typically Found in a 36 Volt Lithium Battery? A typical 36-volt lithium battery usually contains 10 cells arranged in a series configuration.

[Get a quote](#)



36V Lithium Batteries: Ultimate Guide

36V lithium batteries pack more power

into a smaller, lighter package compared to traditional batteries. This makes them ideal for portable devices like e-bikes ...

[Get a quote](#)



 **LFP 48V 100Ah**

The Ultimate Guide to 36V Batteries: Types, Capacities, and Uses

A 36V battery with 10,000 mAh (10 Ah) will last twice as long as one with 5,000 mAh (5 Ah) under the same conditions. Higher mAh ratings are better for devices with high power demands, ...

[Get a quote](#)



What Should a 36 Volt Battery Read When Fully ...

Most batteries are built with 12-volt cells. A 36-volt battery is made up of three of these cells wired together in series. When fully charged, all three ...

[Get a quote](#)

Lithium Battery Packs by the Numbers

A 36v 10ah 360wh battery will give you between 15-30 miles range per charge

using 100% of the capacity. The consumption rate depends on many factors such as the amount that you pedal, ...

[Get a quote](#)



Outdoor Cabinet BESS
50 kWh/500 kWh Battery Storage System
Industrial and Commercial Energy Storage

- All In One**
Integrating battery packs
- High-capacity**
50-500kWh
- Degree of Protection**
IP54
- Operating Temperature Range**
-20~60°C(Derating above 50 °C)
- Intelligent Integration**
Integrated photovoltaic storage cabinet
- Rated AC Power**
50-100kW
- Altitude**
3000m(>3000m derating)



Helpful Guide to Lithium Batteries in Parallel and Series

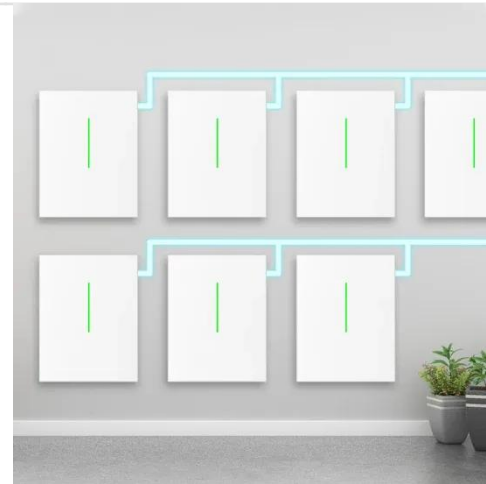
Lithium battery series and parallel: There are both parallel and series combinations in the middle of the lithium battery pack, which increases ...

[Get a quote](#)

How Many Cells in a Lithium Battery Pack? A Complete Guide to ...

Lithium batteries use multiple cells. For example, a lithium-ion battery has 3 cells for 11.1 volts, 4 cells for 14.8 volts, or 10 cells for 37 volts. Cells can be arranged in series to ...

[Get a quote](#)



Understanding the 36 Volt Lithium Battery: The Ultimate Guide

To fully appreciate the advantages of a



36 volt lithium battery, it's important to first understand what it is and how it differs from other types of batteries. A 36 volt lithium battery ...

[Get a quote](#)

LG 21700 EBIke Battery Pack 36V 48V 52V 19.2Ah ...

If you're looking for a reliable and long-lasting power source for your electric bike or electric scooter, the LG 21700 EBIke Battery Pack is the perfect solution. ...

[Get a quote](#)



Contact Us

For catalog requests, pricing, or partnerships, please visit:
<https://www.zenius.co.za>