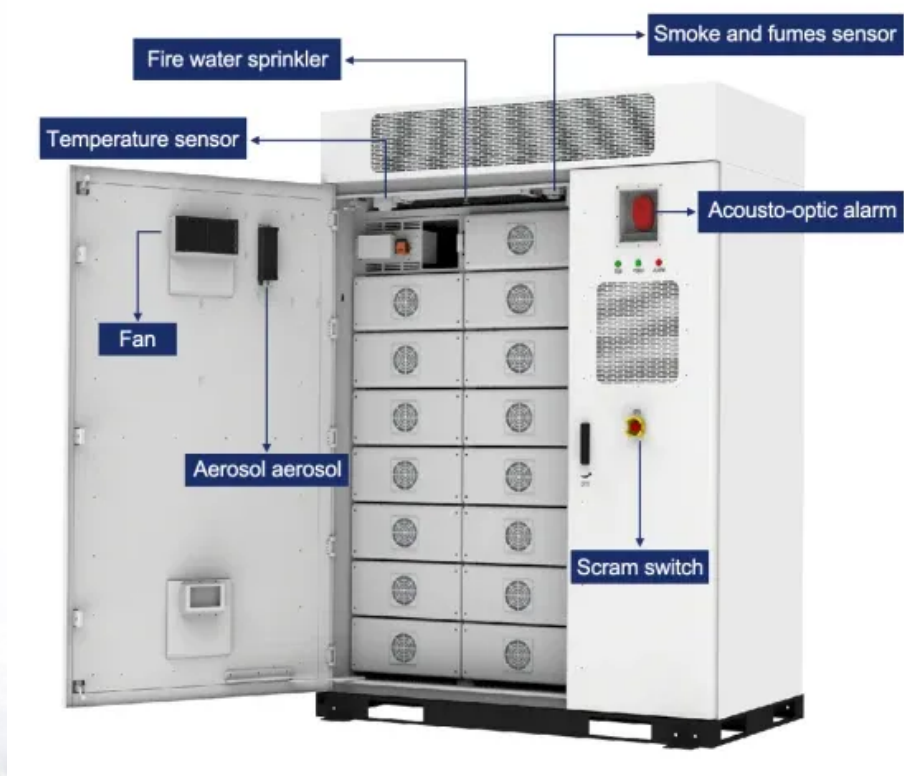


## SolarMax Energy Systems

# How far is the power generation distance of a communication base station



## Overview

---

Does increasing base station transmitter power increase radio range?

Increasing base station transmitter power will nearly always increase the communications range, but usually by less than anticipated. For aircraft at altitudes below 8000 feet agl, even a relatively low power transmitter will reach the radio horizon with an acceptable signal level.

How does a radio base station work?

The radio base station is installed at a mobile operator's site, also known as a "cell site". The electricity powers it, and this power determines how far the radio signal can travel. The higher the power, the longer the signal can travel.

How much power does a cellular base station use?

This problem exists particularly among the mobile telephony towers in rural areas, that lack quality grid power supply. A cellular base station can use anywhere from 1 to 5 kW power per hour depending upon the number of transceivers attached to the base station, the age of cell towers, and energy needed for air conditioning.

What is a base station in a mobile network?

The base stations represent the radio part of the mobile network, and one base station typically contains multiple cells which operate on specific radio frequencies. The radio network is what connects a mobile phone to the mobile network.

What are the components of a base station?

**Power Supply:** The power source provides the electrical energy to base station elements. It often features auxiliary power supply mechanisms that guarantee operation in case of lost or interrupted electricity, during blackouts. **Baseband Processor:** The baseband processor is responsible for the processing of the digital signals.

How far can a 2 watt base transmitter go?

Thus for an aircraft at 15,000 feet agl, a 2 watt base transmitter may give a range of about 90 miles, limited by the signal field strength. Increasing the transmitter power to 10 watts may increase the range to more than 150 miles, the limitation now being the radio horizon.

## How far is the power generation distance of a communication base

---



### Communication base station-solar power supply ...

Communication base stations located in remote areas can generally only draw electricity from rural power grids, with poor grid stability, long transmission ...

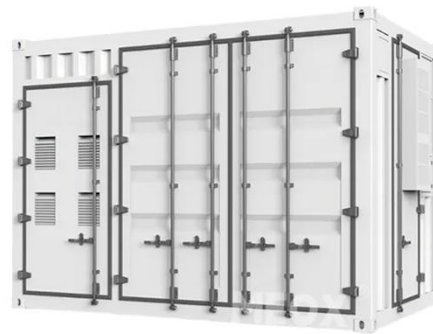
[Get a quote](#)

---

### Base stations and networks

The intensity of the radio waves is drastically reduced as the distance increases from the base station antenna. On the ground, in houses, and other places where people reside, the ...

[Get a quote](#)



### COMMUNICATIONS RANGE OF AVIATION BAND BASE ...

Increasing base station transmitter power will nearly always increase the communications range, but usually by less than anticipated. For aircraft at altitudes below 8000 feet agl, even a ...

[Get a quote](#)

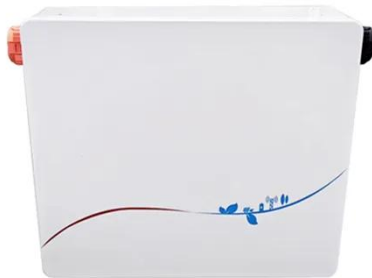
---

### CB Radio Range: What is the

## Range of a CB Radio?

Installation Quality Base Station vs. Mobile Article End: Increasing Range CB Radio Power Output The FCC allows a maximum of 4 watts of output power for CB radios to avoid signal ...

[Get a quote](#)



## Telecom Base Station PV Power Generation System Solution

The communication base station installs solar panels outdoors, and adds MPPT solar controllers and other equipment in the computer room. The power generated by solar energy is used by ...

[Get a quote](#)

## Power station

A power station, also referred to as a power plant and sometimes generating station or generating plant, is an industrial facility for the generation of electric power. Power stations are generally ...

[Get a quote](#)



## Cell sites and cell towers in a mobile cellular network

In this paper we collaborate with Ooredoo mobile company in Kuwait to

see the effect of cell radius on the power  
can the base station to supply the user  
by using the path loss and the ...

[Get a quote](#)

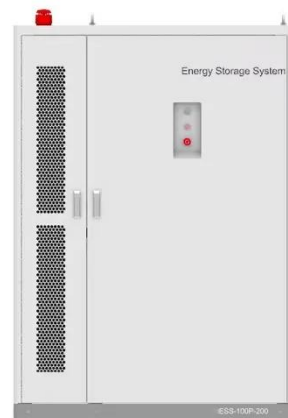


---

## Key Factors Affecting Power Consumption in Telecom Base Stations

The power consumption of the base station is directly related to the power, and the size of the power consumption of the base station mainly depends on the transmit power of the ...

[Get a quote](#)



## Base Stations

**Power Amplifier:** The RF signals are power amplified before transmission to their destinations for increased signal strength. Therefore, this is very important for enabling the ...

[Get a quote](#)

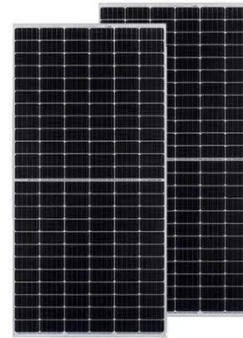
---

## The Range of Ham Radio: A Guide to How Far You ...

Range of ham radio? How far you can talk on a ham radio depends on the

frequency, transmitter output power and the antenna you're using.

[Get a quote](#)



## What is 5G base station architecture?

Architecting a 5G base station Your design should take into account several challenges. Does your application depend more on distance or bandwidth capabilities - or a ...

[Get a quote](#)

## Measurements and Modelling of Base Station Power ...

The real data in terms of the power consumption and traffic load have been obtained from continuous measurements performed on a fully ...

[Get a quote](#)



## Optimize Signal Quality In 5G Private Network Base Stations

Optimize Signal Quality In 5G Private Network Base Stations With the rapid evolution of cellular communication

systems, there is a growing need for higher operating frequencies and wider ...

[Get a quote](#)



## 9.0 Communications

9.2 Radio Frequency Communications A radio communication system includes a radio transmitter, a free space communication channel, and a radio receiver. At the top level, a ...

[Get a quote](#)



## Key Factors Affecting Power Consumption in Telecom ...

The power consumption of the base station is directly related to the power, and the size of the power consumption of the base station mainly ...

[Get a quote](#)

## Mobile Phone Base Stations EMF / Health Fact Pack

Typically transmitted power from an outdoor base station may range from a few watts to about 100 watts; while the



output power of indoor base stations is even lower. For comparison purposes, ...

[Get a quote](#)



## Base Station (BS) Transmitter Power Level by Cell Radius ...

In this paper we collaborate with Ooredoo mobile company in Kuwait to see the effect of cell radius on the power can the base station to supply the user by using the path loss and the ...

[Get a quote](#)

## Base Stations and Energy Levels

Since the base station and the devices connected to utilize low power radio waves, they aren't considered to be dangerous, so long as the antenna portion of the station is kept at ...

[Get a quote](#)



## Cell sites and cell towers in a mobile cellular network

The radio base station is installed at a mobile operator's site, also known as a "cell site". The electricity powers it, and

this power determines how far the radio signal can travel. ...

[Get a quote](#)



## Multi-objective cooperative optimization of communication base station

Recently, 5G communication base stations have steadily evolved into a key developing load in the distribution network. During the operation process, scientific dispatching ...

[Get a quote](#)



## Power Base Station

Maximum base station power is limited to 38 dBm output power for Medium-Range base stations, 24 dBm output power for Local Area base stations, and to 20 dBm for Home base stations.

[Get a quote](#)



## ICNIRP , Base Stations

Over large distances, the signals must be relayed by a communication network comprising base stations and often

supported by a wired network. The power of a base station varies (typically ...

[Get a quote](#)



---

## Contact Us

For catalog requests, pricing, or partnerships, please visit:  
<https://www.zenius.co.za>