

SolarMax Energy Systems

How big of an inverter do I need for a 200A battery



Overview

For a 12V 200Ah lithium battery, a 1500W to 2000W inverter is recommended to ensure efficient performance with headroom for surge loads. Proper sizing enhances system longevity and safety, as exemplified by Redway Power's battery technology. How do I choose the right inverter size for my 200Ah lithium battery?

When it comes to choosing the right inverter size for your 200Ah lithium battery, there are a few factors you'll need to consider. The first is the power needs of the devices you plan on running off the inverter. Take into account their wattage requirements and how many devices will be connected at once.

What voltage should a 12V inverter run on?

The input voltage of the inverter should match the battery voltage. (For example 12v battery for 12v inverter, 24v battery for 24v inverter and 48v battery for 48v inverter Summary What Will An Inverter Run & For How Long?

.

How much battery do I need to run a 3000-watt inverter?

You would need around 24v 150Ah Lithium or 24v 300Ah Lead-acid Battery to run a 3000-watt inverter for 1 hour at its full capacity Here's a battery size chart for any size inverter with 1 hour of load runtime Note! The input voltage of the inverter should match the battery voltage.

What size inverter do I Need?

A general rule is to choose an inverter that can handle at least 1.5 times the total wattage of your devices. For example, if your devices require 800 watts, a 1200-watt inverter would be suitable. Calculating Inverter Size.

Should I buy a larger inverter?

A larger inverter may seem tempting, but if it exceeds the capacity of your

battery, it can drain the battery quickly and reduce its lifespan. So, calculate your power requirements carefully before making a purchase. Additionally, consider investing in a high-quality pure sine wave inverter.

How much wattage should an inverter handle?

A general rule is to choose an inverter that can handle at least 1.5 times the total wattage of your devices. For example, if your devices require 800 watts, a 1200-watt inverter would be suitable. 1. Understanding Battery Capacity 2. Determining Device Wattage 3. Calculating Inverter Size

How big of an inverter do I need for a 200A battery



What Size Inverter Do I Need for a 200AH Battery?

Choosing the right inverter size for a 200AH battery is crucial for ensuring optimal performance and efficiency. This section provides detailed insights into how to calculate the ...

[Get a quote](#)

BIG Definition & Meaning , Dictionary

Big can describe things that are tall, wide, massive, or plentiful. It's a synonym of words such as large, great, and huge, describing something as being notably high in number or scale in some ...

[Get a quote](#)



How Many Batteries Do I Need for a 200 Watt Solar ...

Batteries for 200 Watt Solar Panels
Sizing Your Battery Bank for Your 200 Watt Solar Panel Array
Calculating the size of the batteries you need, as well as ...

[Get a quote](#)

Calculate Battery Size For Any Size Inverter (Using Our Calculator)

To recharge your battery from time to time you would need the right size solar panel to do the job! Read the below article to find out the suitable solar panel size for your battery bank

[Get a quote](#)



'Big Brother 27': Rachel Reilly Shockingly Eliminated in Twist

1 day ago· Rachel Reilly was shockingly and unexpectedly eliminated from 'Big Brother 27' in a twist competition during the Tuesday, Sept. 9 episode, sparking outrage among viewers and ...

[Get a quote](#)

Big (film)

Big is a 1988 American fantasy comedy-drama film directed by Penny Marshall and stars Tom Hanks as Josh Baskin, an adolescent boy whose wish to be "big" transforms him physically ...

[Get a quote](#)



What Size Inverter Can I Run Off a 200Ah Battery?

Suitable inverters for a 200Ah battery should match the system voltage (e.g., 12V) and handle the desired load power.



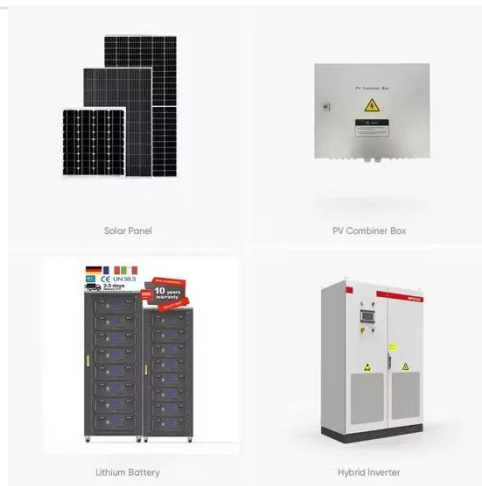
Pure sine wave inverters are often preferred for sensitive electronics.

[Get a quote](#)

Choosing the Best Inverter Size for a 200Ah Lithium ...

This guide will walk you through everything you need to know about pairing your 200Ah lithium battery with an appropriately sized inverter. ...

[Get a quote](#)



Batteries for a 3000 Watt Inverter: A Complete Guide

Ahhhhh batteries, inverters, and runtimes... It can be a bit of a nightmare trying to work out the best battery size for your 3000 watt inverter.

[Get a quote](#)

BIG , definition in the Cambridge English Dictionary

He fell for her in a big way (= was very attracted to her). Prices are increasing in a big way. Her life has changed in a big

way since she became famous.

[Get a quote](#)



How to Determine the Correct Fuse for Your Inverter

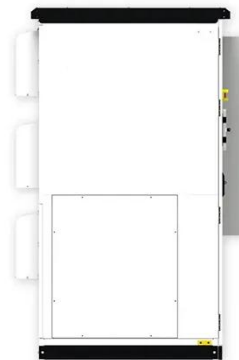
Discover how to choose the correct fuse size and type for your inverter with our guide. Power ratings, system voltage, current calculation, and fuse selection ...

[Get a quote](#)

How Many 200ah Batteries are Needed to Power a Home?

To run a solar panel and battery system, add the total wattage plus reserve power (20% minimum). And do not forget the inverter and charge controller. Just to be clear you do not ...

[Get a quote](#)



What Size Inverter Can I Run Off a 200Ah Lithium Battery?

You can run an inverter rated between 1500W and 2400W off a 200Ah lithium battery depending on voltage and usage.

Typically, a 12V 200Ah battery supports up to about ...

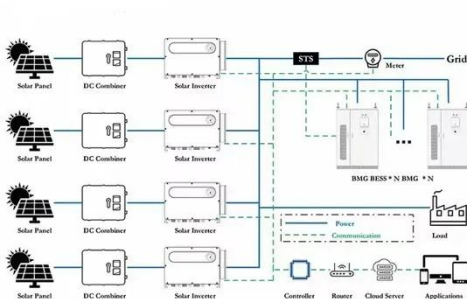
[Get a quote](#)



Choosing the Best Inverter Size for a 200Ah Lithium Battery

This guide will walk you through everything you need to know about pairing your 200Ah lithium battery with an appropriately sized inverter. Understanding the Basics of a ...

[Get a quote](#)



200ah bank of Lithium batteries and a 3000watt ...

As to cable size, I'll be using 4 gauge between the two batteries, the battery neg and the negative bus bar, the battery pos and 100a breaker, from the breaker ...

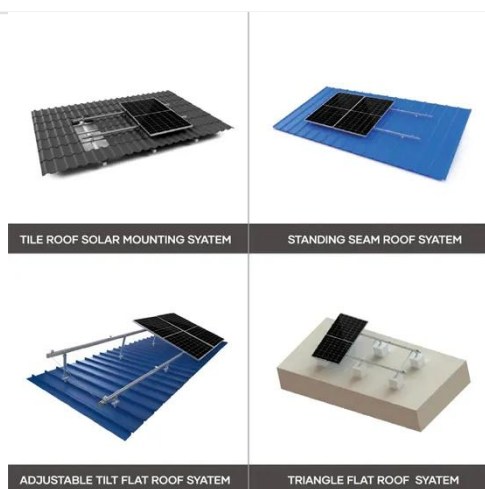
[Get a quote](#)

How to size fuses at battery bank

Wiring the DC to DC with 6AWG. So do I

really only need a ~30-40 AMP fuse at my battery? Do I need one fuse between the two batteries in parallel and the main switch or ...

[Get a quote](#)



Whole home battery / inverter backup design considerations

Do you want to DIY it, or get someone in? If you're content with DIY, get yourself a wrecked EV, pull the battery out and either find a hybrid inverter that runs a high voltage, or ...

[Get a quote](#)

Inverter Size

To calculate the wire and fuse size needed for the inverter you would take the inverter wattage, divide by 12V, then divide by 85% efficiency. That gives the max amperage ...

[Get a quote](#)



What Size of Inverter Is Good for a 200Ah Battery?

Choosing the right size inverter for a 200Ah battery is crucial for ensuring efficient power delivery and preventing

system overloads. Typically, an inverter rated between 1000W ...

[Get a quote](#)



✓ TELECOM CABINET

✓ BRAND NEW ORIGINAL

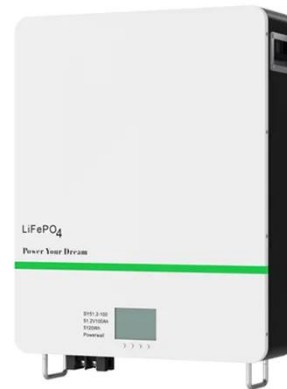
✓ HIGH-EFFICIENCY

What Size Inverter Can I Run Off a 200Ah Battery?

Suitable inverters for a 200Ah battery should match the system voltage (e.g., 12V) and handle the desired load power. Pure sine wave inverters are often preferred for sensitive ...

[Get a quote](#)

Support Customized Product



Which inverter is best for 200ah battery?

Factors to Consider for a 200Ah Battery-Compatible Inverter. Most 200Ah batteries operate at 12V or 24V. Ensure the inverter matches the battery's voltage. A mismatch can lead to ...

[Get a quote](#)

Recommended Inverter Cable, Breaker & Fuse Sizing

Determine what size inverter-to-battery cables and DC breaker (or fuse) you should use with an off-grid inverter to

install and operate it safely. Use this ...

[Get a quote](#)



Which Inverter is Suitable for a 200Ah Battery?

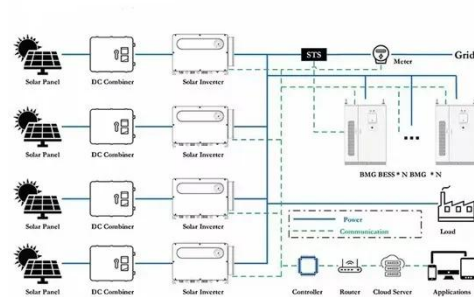
Choosing the right inverter for a 200Ah battery depends on several factors, including the load size, runtime, and efficiency. The 200Ah battery is large enough to handle ...

[Get a quote](#)

What Size Inverter Do I Need for a 200Ah Lithium Battery

The ideal inverter size depends on your power needs and the battery's voltage and capacity. For a 12V 200Ah lithium battery, a 1500W to 2000W inverter is recommended to ...

[Get a quote](#)



Choosing the Right Inverter Size for a 200Ah Lithium Battery

Choosing an inverter involves more than



simply picking a model off the shelf. It begins with evaluating your energy consumption needs meticulously. You'll need to consider both the ...

[Get a quote](#)

Calculate Battery Size For Any Size Inverter (Using ...

To recharge your battery from time to time you would need the right size solar panel to do the job! Read the below article to find out the suitable ...

[Get a quote](#)



Contact Us

For catalog requests, pricing, or partnerships, please visit:
<https://www.zenius.co.za>