

SolarMax Energy Systems

How big is the assembled 13 strings of 6 groups of 48v lithium batteries



Overview

How many lithium batteries can be connected in series?

Lithium battery pack 48V20AH generally single lithium battery is 3.5V, so 48V lithium battery pack needs $48/3.5=13.7$, just take 14 in series. If the manufacturer has provided a set of 12V lithium batteries, then 4 can be connected in series. As long as the output voltage is 48V, the current is 2A or 4A.

How many strings should a lithium battery have?

Therefore, the lithium battery must also be about 58v, so it must be 14 strings to 58.8v, 14 times 4.2, and the iron-lithium full charge is about 3.4v, it must be four strings of 12v, 48v must be 16 strings, and so on, 60v There must be 20 strings in parallel with the same model and the same capacity.

What are the different types of lithium battery packs?

Lithium battery series and parallel: There are both parallel and series combinations in the middle of the battery pack, which increases the voltage and increases the capacity. Such as 4000mAh, 6000mAh, 8000mAh, 5Ah, 10Ah, 20Ah, 30Ah, 50Ah, 100Ah and so on. Take 48V 20Ah lithium battery pack as an example Lithium Battery PACK.

Why is a lithium battery a series battery?

Due to the limited voltage and capacity of single batteries, series and parallel combinations are required in actual use to obtain higher voltage and capacity in order to meet the actual power supply needs of the equipment. Lithium battery in series: the voltage is added, the capacity remains the same, and the internal resistance increases.

Why do we connect multiple lithium batteries to a string of batteries?

Connecting multiple lithium batteries into a string of batteries allows us to build a battery bank with the potential to operate at an increased voltage, or

with increased capacity and runtime, or both.

What if there are only two batteries in a series string?

If there are only two batteries in the series string (Figure 1), we would then take a cable from the open POS. (+) terminal of the first battery and a cable from the open NEG. (-) of the second (last) battery in the string to the load and charger/power source.

How big is the assembled 13 strings of 6 groups of 48v lithium batt



Connecting batteries in parallel - BatteryGuy Knowledge Base

But what happens if you wire batteries of different voltages and amp hour capacities together in parallel? Connecting batteries of different voltages in parallel This is the ...

[Get a quote](#)

48V LiFePO4 Lithium Batteries

48V LiFePO4 Lithium Batteries Power your heavy-duty off-grid applications with LiTime's 48V lithium batteries--engineered for performance, safety, and long ...

[Get a quote](#)



Lithium Series, Parallel and Series and Parallel Connections

We all know that the series voltage of lithium batteries increases and the parallel capacity increases. So how to calculate how many series and how many ...

[Get a quote](#)

Lithium Series, Parallel and Series and Parallel Connections

Connecting multiple lithium batteries into a string of batteries allows us to build a battery bank with the potential to operate at an increased voltage, or with increased capacity and runtime, or both.



[Get a quote](#)



Battery Series and Parallel Connection Calculator

This is important in many areas, including renewable energy systems and electronic devices. We'll delve into the big differences when linking batteries in series or parallel.

[Get a quote](#)

Onlin free battery calculator for any kind of battery : lithium

How to size your storage battery pack : calculation of Capacity, C-rating (or C-rate), ampere, and runtime for battery bank or storage system (lithium, Alkaline, LiPo, Li-ION, Nimh or Lead ...

[Get a quote](#)



solar system battery lithium

Results for solar system battery lithium
Looking for a good deal on solar system battery lithium? Explore a wide range of

the best solar system battery lithium on AliExpress to find one that ...

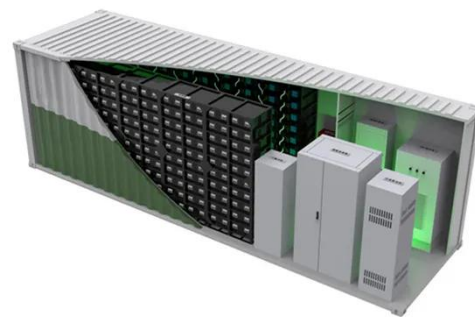
[Get a quote](#)



Complete Battery Cable Size Chart & Quick Guide

Choosing the right battery cable size is essential for safety and efficiency in electrical systems. The correct size ensures optimal current flow, preventing overheating, ...

[Get a quote](#)



Calculate Battery Size For Any Size Inverter (Using ...

To calculate the battery capacity for your inverter use this formula. Inverter capacity (W)*Runtime (hrs)/solar system voltage = Battery Size*1.15. ...

[Get a quote](#)

How to Calculate the Number of Lithium Batteries in Series and in

We all know that the series voltage of lithium batteries increases and the

parallel capacity increases. So how to calculate how many series and how many batteries a lithium battery ...

[Get a quote](#)



How to Choose the Right Ah for 48V Li-ion Battery Pack?

Struggling to choose the right Ah for your 48V Li-ion battery pack? This in-depth guide covers everything you need to make the best choice. Find out more now!

[Get a quote](#)

Battery Strings , Newmar Powering the Network

Newmar can assist you in specifying your battery strings and supply the proper system for your application. Once we determine your needs, we can have the ...

[Get a quote](#)



How many strings are 48V20AH lithium battery ...

Lithium battery pack 48V20AH generally single lithium battery is 3.5V, so 48V lithium battery pack needs $48/3.5=13.7$,



just take 14 in series. If ...

[Get a quote](#)

Battery Pack Calculator , Good Calculators

Use it to know the voltage, capacity, energy, and maximum discharge current of your battery packs, whether series- or parallel-connected. Using the battery pack calculator: Just complete ...



[Get a quote](#)



Cells Per Battery Calculator

Can I use the same formula for all types of batteries? Yes, the formulas for calculating the number of cells in series and parallel apply to all battery types, but you must ...

[Get a quote](#)

Calculate the number of series and parallel connections for lithium

The standard for ternary lithium batteries stipulates a voltage of 3.7V,

fully charged with 4.2V, and three connections are 12V. 48V requires four triple connections.

[Get a quote](#)



Calculate Battery Size For Any Size Inverter (Using Our Calculator)

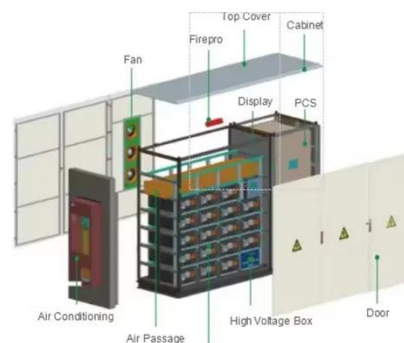
To calculate the battery capacity for your inverter use this formula. Inverter capacity (W)*Runtime (hrs)/solar system voltage = Battery Size*1.15. Multiply the result by 2 for lead ...

[Get a quote](#)

Batteries , Battery Strings , Telecom , Public Safety

Batteries and Battery Strings by Newmar Powering the Network: 12V DC, 24V DC and 48V DC batteries in rack mount and DIN Rail mount configurations for ...

[Get a quote](#)



Onlin free battery calculator for any kind of battery : lithium

Battery calculator : calculation of battery



pack capacity, c-rate, run-time, charge and discharge current Online free battery calculator for any kind of battery : lithium, Alkaline, LiPo, Li-ION, ...

[Get a quote](#)

How to Calculate the Number of Lithium Batteries in Series or

Lithium Batteries PACK Lithium battery PACK refers to the processing, assembly and packaging of lithium battery packs. The process of assembling lithium batteries into groups is called ...



[Get a quote](#)



BigBattery , 48V EAGLE 2 , LiFePO4 Lithium Battery 1.63kWh: ...

The BigBattery 48V EAGLE 2 is a high-performance LiFePO4 lithium battery designed specifically for applications in golf carts, utility vehicles, RVs, and camper vans. With ...

[Get a quote](#)

What does the number of lithium battery strings represent

For 48V battery packs, ternary lithium batteries generally use 13 strings or 14 strings, and lithium iron phosphate batteries generally use 15 strings or 16 strings.

[Get a quote](#)



USA Made Lithium Batteries , American Brand

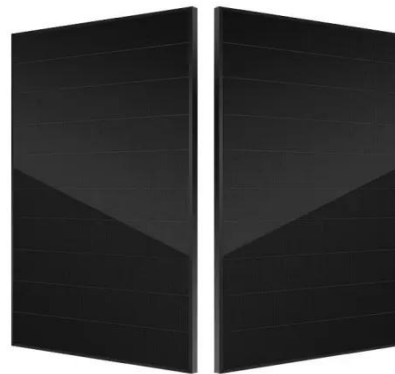
Battle Born Batteries Battle Born Batteries harnesses the power of lithium iron phosphate (LiFePO4), bringing some of the most efficient, stable, and ...

[Get a quote](#)

How many strings are 48V20AH lithium battery packs? How to ...

Lithium battery pack 48V20AH generally single lithium battery is 3.5V, so 48V lithium battery pack needs $48/3.5=13.7$, just take 14 in series. If the manufacturer has provided ...

[Get a quote](#)



Contact Us

For catalog requests, pricing, or partnerships, please visit:

<https://www.zenius.co.za>