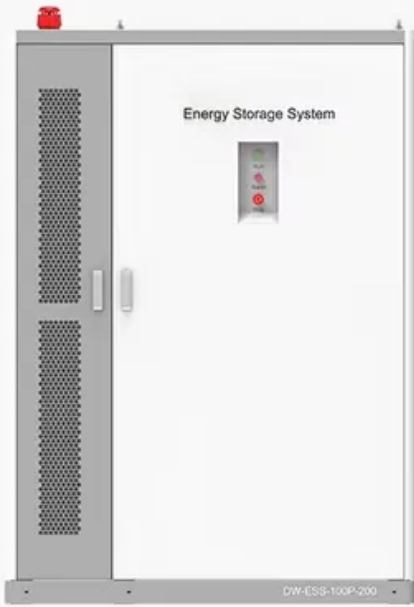


SolarMax Energy Systems





How big an inverter is needed for home photovoltaics

◆ **PRODUCT INFORMATION** ◆



Energy Storage System

DW-ESS-100P-200

-  **BATTERY CAPACITY**
50kWh~500kWh
-  **DC VOLTAGE RANGE**
400V~1000V
-  **DEGREE OF PROTECTION**
IP54
-  **OPERATING TEMPERATURE RANGE**
-10~50°C



Overview

What size solar inverter do I Need?

A 4.5 kW array (or ten 450-watt solar panels) would just about cover your consumption. The type of solar panels you choose can also impact the size of the inverter you need. Different types of solar panels have different wattage ratings and efficiency levels. The three main types of solar panels are monocrystalline, polycrystalline, and thin film.

Should your inverter size match your solar panel size?

Match your inverter to your lifestyle, not just your roof. If you're running a fridge, home office, and PS5 all day, size accordingly. If you're barely home, go leaner. Here's the cheat code: your inverter size should usually match your solar panel system's size in kilowatts.

How do I choose a solar inverter?

This is the most critical factor in solar inverter sizing. Check the total wattage of your solar array (DC) and use it to calculate the appropriate inverter output (AC). For optimal results, a 6.6kW array typically pairs with a 5kW inverter, falling within the accepted array-to-inverter ratio of 1.15 to 1.33.

How do I choose the right inverter size?

When considering an inverter's size, it's important to understand the difference between surge power, which is the peak power needed to start a device, and continuous power, the amount required to keep it running. These factors play a significant role in determining the right inverter size for my setup.

What is a solar power inverter?

A solar power inverter is an essential element of a photovoltaic system that makes electricity produced by solar panels usable in the home. It is responsible for converting the direct current (DC) output produced by solar

panels into alternating current (AC) that can be used by household appliances and can be fed back into the electrical grid.

How do I know if I need a solar inverter?

The simplest way to do this would be to look at your daily energy consumption. Most homes have an average daily consumption of between 9 to 20 kW. Depending on where they fall in that band and the size of their solar array, they will likely use a 3, 5, or 10kW inverter. You also need to consider surge watts and voltage drop.

How big an inverter is needed for home photovoltaics



Inverter Size Calculator - self2solar

Our Inverter Size Calculator simplifies this task by accurately estimating the recommended inverter capacity based on your solar panel power and quantity. By inputting ...

[Get a quote](#)

Solar Inverter Sizing Guide for Maximum Efficiency , Mingch

In most cases, the inverter size should be close to the size of your solar panel system, within a 33% ratio. For example, a 6.6kW solar array often pairs with a 5kW inverter to ...



[Get a quote](#)



Solar inverter sizing: Choose the right size inverter

When designing a solar installation, and selecting the inverter, we must consider how much DC power will be produced by the solar array and how much AC power the inverter is able to ...

[Get a quote](#)

What Size Inverter You Need

(Calculations + Battery)

Inverters are made with different power capacities, depending on the size of the system you want to run. For this discussion, we are looking at a ...

[Get a quote](#)



What Size Inverter You Need (Calculations + Battery)

Inverters are made with different power capacities, depending on the size of the system you want to run. For this discussion, we are looking at a domestic inverter that you can ...

[Get a quote](#)

SOLAR PV INVERTER SIZING COMPLETE GUIDE

How big should a solar inverter be? Most installations slightly oversize the inverter, with a ratio between 1.1-1.25 times the array capacity, to account for these considerations. The size of the ...

[Get a quote](#)



how big an inverter do i need for 10kw solar

How Big of an Inverter Do I Need for a 10 kW Solar System? Introduction When installing a 10 kW solar system, it is

essential to choose the right size inverter ...

[Get a quote](#)



SOLAR PV INVERTER SIZING COMPLETE GUIDE

How big an inverter should I use for a 300w solar panel For a 300 watt solar panel, you need anywhere between 500-1500 watt capacity inverter. However, the exact size you need will ...

[Get a quote](#)



What Size Solar Inverter Do I Need? A Quick Sizing ...

Learn what size solar inverter do I need with step-by-step load calculations, surge tips, and Lefor Solar Inverter Series recommendations.

[Get a quote](#)



How big an inverter is needed for photovoltaic grid connection

Most installations slightly oversize the

inverter, with a ratio between 1.1-1.25 times the array capacity, to account for these considerations. The size of the solar inverter you need is directly ...

[Get a quote](#)



Solar Inverter Sizing Guide for Maximum Efficiency

If you're looking for a reliable PV inverter sizing solution that grows with your energy needs, we deliver Hybrid Inverters. View Hybrid Inverter ...

[Get a quote](#)

Solar inverter sizing: Choose the right size inverter

When designing a solar installation, and selecting the inverter, we must consider how much DC power will be produced by the solar array and how much AC ...

[Get a quote](#)



How big an inverter should I use for a 10kw photovoltaic

To calculate the ideal inverter size for your solar PV system, you should consider the total wattage of your solar

panels and the specific conditions of your installation site. The general rule is to ...

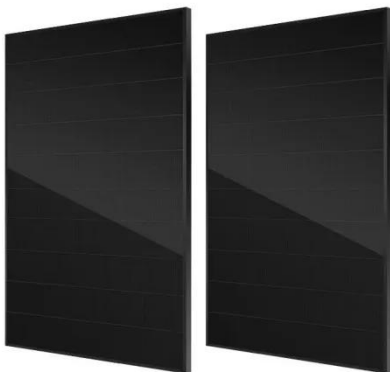
[Get a quote](#)



Solar Inverter Guide: Definition, Types, Costs, and Buying

Solar inverters, as the core equipment in a solar PV system, play a key role in efficiently converting the direct current (DC) generated by the PV modules into alternating ...

[Get a quote](#)



How To Size an Inverter: Solar Inverter Sizing Explained

When sizing an inverter, calculate the total wattage needed and understand surge vs. continuous power. Choose the right size with a 20% safety margin. Factor in simultaneous ...

[Get a quote](#)

How to Choose the Right Size Solar Inverter: Step-by-Step with ...

Wondering what size solar inverter do I need for your solar system? This guide walks you through calculating inverter size based on panel capacity, power usage, and safety ...

[Get a quote](#)



Solar Inverter Sizing Guide for Maximum Efficiency

In most cases, the inverter size should be close to the size of your solar panel system, within a 33% ratio. For example, a 6.6kW solar array often ...

[Get a quote](#)

What Size Solar Inverter Do I Need? Experts Break It Down

But before you start soaking up the sun, you'll need the right inverter to match your system. This guide breaks down what size solar inverter you actually need--so your setup ...

[Get a quote](#)



The Complete Off Grid Solar System Sizing Calculator

Below is a combination of multiple calculators that consider these variables and allow you to size the essential



components for your off-grid solar ...

[Get a quote](#)

Choosing the Right Size Inverter for Your Solar ...

What size solar inverters do I need for my system? Solar inverters come in a range of different sizes. Like solar panels, inverters are rated in watts. ...

[Get a quote](#)



How To Size An Inverter for Solar and Off Grid

In order to determine what size inverter you need, you have to know how much power your load draws. If you use an inverter that is not ...

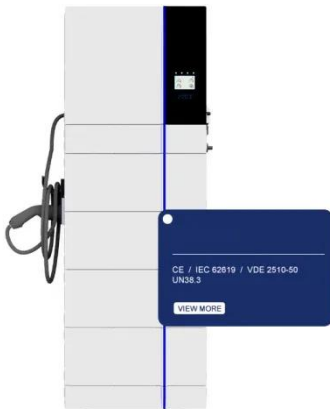
[Get a quote](#)

How To Size an Inverter: Solar Inverter Sizing Explained

When sizing an inverter, calculate the total wattage needed and understand surge vs. continuous power. Choose the

right size with a 20% ...

[Get a quote](#)



What Size Solar Inverter Do I Need? A Quick Sizing Guide

Learn what size solar inverter do I need with step-by-step load calculations, surge tips, and Lefor Solar Inverter Series recommendations.

[Get a quote](#)

How big an inverter is needed for solar power generation

How big should a solar inverter be? Most installations slightly oversize the inverter, with a ratio between 1.1-1.25 times the array capacity, to account for these considerations. The size of the ...

[Get a quote](#)



How To Size An Inverter for Solar and Off Grid

In order to determine what size inverter you need, you have to know how much power your load draws. If you use an



inverter that is not capable of providing enough current ...

[Get a quote](#)

How Big of an Inverter Do I Need to Run a Whole House?

Properly sizing your inverter ensures efficient energy conversion and reliable operation of your solar PV (photovoltaic) system. Let's delve into the factors that determine the ...

[Get a quote](#)



A PV to inverter power ratio of 1.15 to 1.25 is considered optimal, while 1.2 is taken as the industry standard. This means to calculate the perfect inverter size, it is always better to choose an ...

[Get a quote](#)

Contact Us

For catalog requests, pricing, or partnerships, please visit:
<https://www.zenius.co.za>