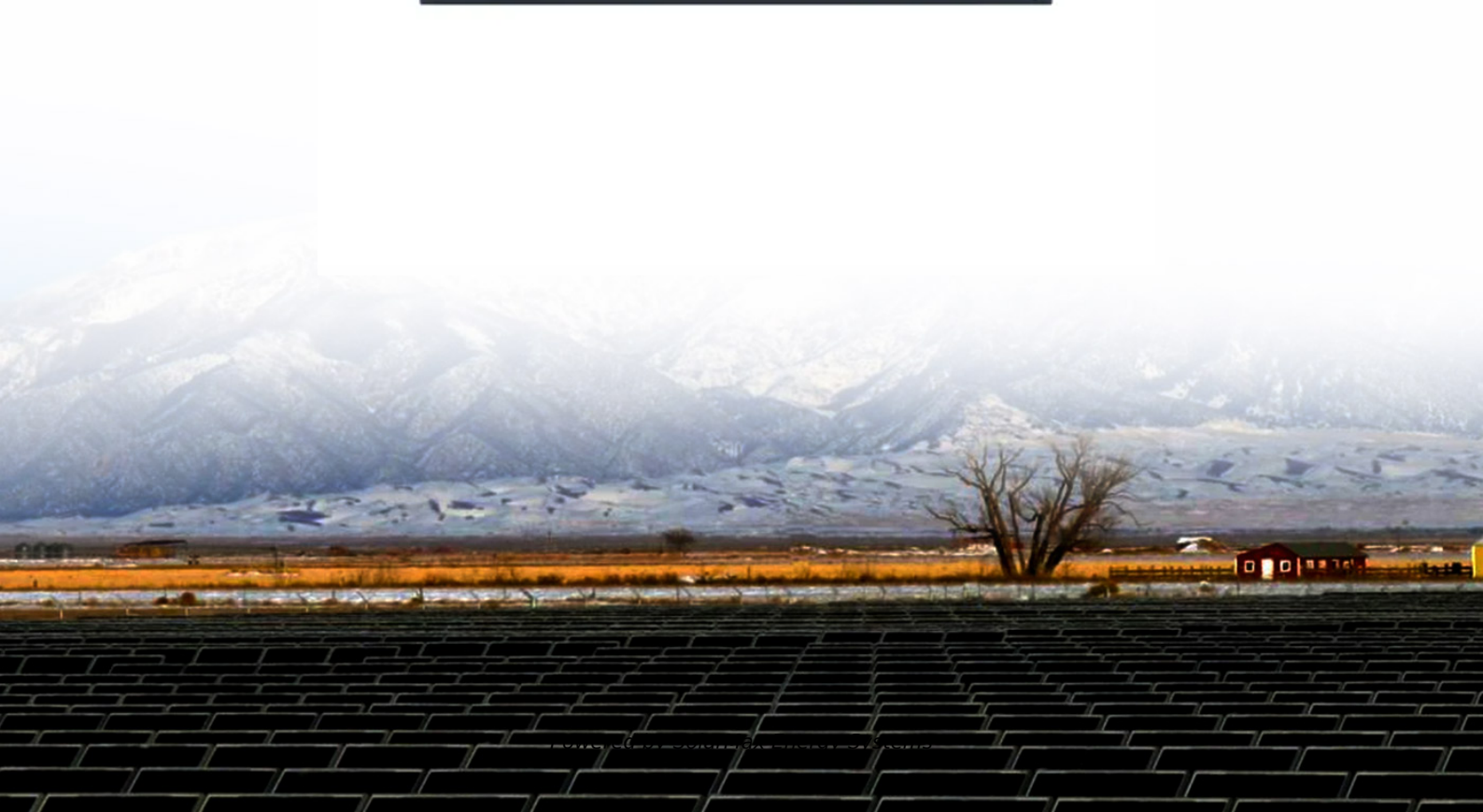


## SolarMax Energy Systems

# How big an inverter can handle 3 5kw



## Overview

---

Before we go any further, we highly recommend that you choose a pure sine wave inverter. This type of inverter delivers high-quality electricity, similar to your utility company. This way, none of your appliances run the risk of being damaged. Now, when it comes to sizing your inverter, you always need to check.

We have summarized the appliances that inverters from 300W to 3000W can run depending on their rated maximum power. Note to our readers: Use the above formula to determine.

How many solar panels can a 5kw inverter handle?

The inverter's size must match the total wattage of your solar panels. Choosing the right inverter size is crucial for your system's best performance. When asking how many panels a 5kW inverter can handle, the answer is about 16-20 standard 300-watt panels. This is because a 5kW inverter can manage a total capacity of 6-7.5 kW.

What size solar inverter do I Need?

A 4.5 kW array (or ten 450-watt solar panels) would just about cover your consumption. The type of solar panels you choose can also impact the size of the inverter you need. Different types of solar panels have different wattage ratings and efficiency levels. The three main types of solar panels are monocrystalline, polycrystalline, and thin film.

Do I need an inverter size chart?

The need for an inverter size chart first became apparent when researching our DIY solar generator build. Solar generators range in size from small generators for short camping trips to large off-grid power systems for a boat or house. Consequently, inverter sizes vary greatly.

How much power does a 5 kW inverter use?

If your system pushes 5,000 watts, a 5,000-watt (or 5 kW) inverter is usually the move. But it's not always one-to-one. Some setups undersize the inverter

a bit—say, 4.6 kW for 5 kW of panels—to save cash without losing much power. It's a balancing act between cost, performance, and when you actually use electricity.

How to calculate solar inverter size?

The easiest way to calculate the solar inverter size you need is to check the DC rating. Typically, the DC rating is the same as the AC output. Another figure you can look at when determining the inverter size you need is the array-to-inverter ratio. This refers to the relationship between the DC rating and AC power output.

How does the inverter size calculator work?

Our Inverter Size Calculator simplifies this task by accurately estimating the recommended inverter capacity based on your solar panel power and quantity. By inputting your panel's rated power and number of panels, the calculator produces a recommended inverter power range that aligns with 80-100% of your system's total DC capacity.

## How big an inverter can handle 3 5kw

---



### Size of inverter for solar power

Single unit size of inverter for solar power below 1kW, suitable for household photovoltaic power plants below 10kW in North America. The required size of inverter for solar ...

[Get a quote](#)

---

## What Inverter Size Do I Need to Run an Air Compressor?

An air compressor is a versatile device that can be used to inflate tires and supply air pressure for various building projects and tools in workshops and garages. Usually they run on electricity or ...



[Get a quote](#)

---



## What Size Solar Inverter Do I Need? Experts Break It Down

But before you start soaking up the sun, you'll need the right inverter to match your system. This guide breaks down what size solar inverter you actually need--so your setup ...

[Get a quote](#)

---

## Why a 5kw Inverter? The Magic Size

The primary difference lies in the capacity. A 5kw inverter can handle a load of up to 5 kilowatts, while other inverters might have higher or lower capacities. The ...

[Get a quote](#)

### Lithium battery parameters

Product capacity: 100Ah

Product size: 135\*197\*35mm

Product weight: 1.82kg

Product voltage: 3.2V

internal resistance: within 0.5



## Understanding Solar Inverter Sizes: What Size Do You Need?

Solar inverter sizing is rated in watts (W). As a general rule of thumb, your solar inverter wattage should be about the same as your solar array's total capacity, within the ...

[Get a quote](#)

## Inverter Size Calculator - self2solar

Determining the correct inverter size depends on your solar array's capacity and your household's power needs. Generally, the inverter should be sized to match about ...

[Get a quote](#)

Warranty  
**10 years**

LiFePO<sub>4</sub>

Intelligent BMS

Wide Temp:  
-20°C to 55°C



## Understanding Solar Inverter Sizes: What Size Do ...

Solar inverter sizing is rated in watts (W). As a general rule of thumb, your solar inverter wattage should be about



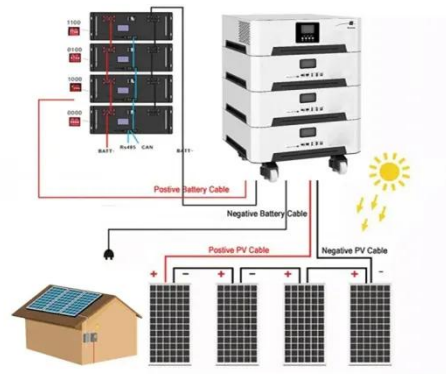
the same as your solar ...

[Get a quote](#)

## What Size Solar Inverter Do You Need for Solar Panels?

This can make things more efficient, but you have to make sure it's not too big compared to the inverter. That's why sometimes you see systems like a 6.6kW solar setup with a 5kW inverter.

[Get a quote](#)



## Solar inverter size: Calculate the right size for your ...

Inverters work most efficiently when operating near their maximum capacity and are typically sized to be roughly the same size as your solar panels. Inverters ...

[Get a quote](#)



## Solar Inverter Sizing to Improve Solar Panel Efficiency

To calculate the required capacity for your solar inverter, sum up the total wattage of your solar panels and adjust

based on expected system efficiency, shading, and the specific ...

[Get a quote](#)



## How to Decide Solar Inverter Capacity for Your Home

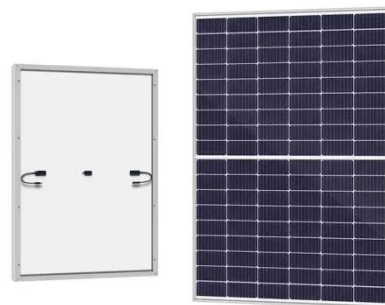
Choosing the right solar inverter capacity is crucial for ensuring that your solar power system operates efficiently and meets your home's energy needs. Whether you're a first-time solar ...

[Get a quote](#)

## Solar Inverter Sizing to Improve Solar Panel Efficiency

To calculate the required capacity for your solar inverter, sum up the total wattage of your solar panels and adjust based on expected system ...

[Get a quote](#)



## Can you add more panels to an already maxed out inverter? : r/solar

Are you in Australia? 5kw Fronius inverters with 6.66kw of panels is





popular here. Because the government offers a rebate on panels up to 133% of inverter capacity ( $6.66/5 = 1.3$ ) and you ...

[Get a quote](#)

## How Many Solar Panels Can I Connect to My Inverter?

Adding solar panels is an obvious solution, but how many of these PV modules can your inverter handle? A solar array can be up to 130% of the inverter capacity. So if you have a 4000 watt ...

[Get a quote](#)

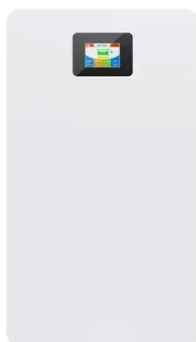
### Outdoor Cabinet BESS

50 kWh/500 kWh Battery Storage System

Industrial and Commercial Energy Storage



- All in One**  
Integrating battery packs
- High-capacity**  
50-500kWh
- Degree of Protection**  
IP54
- Operating Temperature Range**  
-20~60°C (Derating above 50 °C)
- Intelligent Integration**  
Integrated photovoltaic storage cabinet
- Rated AC Power**  
50-100kW
- Altitude**  
3000m(>3000m derating)



## What size generator do you need to run your air ...

So, the 1300 Watts of running power that a 2000W generator can easily handle, can potentially go up to 7800 Watts of starting power. If you ...

[Get a quote](#)

## Solar Panel Inverter Size Calculator

For a 7kW solar system, you'll need an inverter of at least 7.5-8 kW. This size



ensures it can handle your solar array's full output. It prevents power clipping and keeps ...

[Get a quote](#)



## How To Size A Solar Inverter in 3 Easy Steps

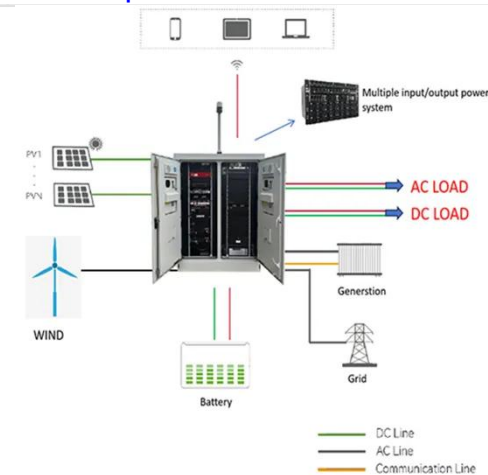
In this guide, we share 3 easy steps on how to size a solar inverter correctly. We explain the key concepts that determine solar inverter sizing including your power needs, the type and number ...

[Get a quote](#)

## How to Calculate Battery Size for Inverters of Any Size

Learn how to calculate how much battery power you need to get your inverter up and running with The Inverter Store's handy how-to guide. It works for any size.

[Get a quote](#)



## What Size Inverter You Need (Calculations + Battery)

Inverters have a power rating in watts (W), which determines how much power they can supply, and the batteries have



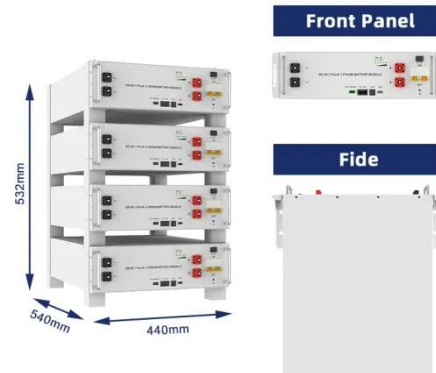
an amp-hour rating, ...

[Get a quote](#)

## Can A Power Inverter Run An Air Compressor? Here's What You ...

If you're planning a road trip or camping adventure and need to power your air compressor, you may be wondering if a power inverter is up to the task. After all, an air ...

[Get a quote](#)



## Solar inverter size: Calculate the right size for your inverter

Inverters work most efficiently when operating near their maximum capacity and are typically sized to be roughly the same size as your solar panels. Inverters are usually sized lower than ...

[Get a quote](#)



## How many solar panels can a 5kw solar inverter off ...

How many AC can 5kW solar inverter

run? The 5kW solar system is for big houses, offices and commercial shops. 5kW solar power system is the ...

[Get a quote](#)

**18650** 3.7V  
Li-ion  
RECHARGEABLE BATTERY  
**2000mAh**



## 5kva Inverter Load Capacity: What Can It Carry

While a 5kva inverter can handle a particular load, several factors can affect its actual load capacity. Battery Capacity: The capacity of the battery linked to the inverter plays a ...

[Get a quote](#)

## Contact Us

For catalog requests, pricing, or partnerships, please visit:  
<https://www.zenius.co.za>