

SolarMax Energy Systems

How big a solar panel should I use for 300 watts



Overview

A typical 300-watt solar panel is 65.8 inches long and 36.1 inches wide. It takes up 16.5 sq ft of area. If you have a 1000 sq ft roof, and you can use 75% of that roof area for solar panels, you can theoretically put 45 300-watt solar panels on a 1000 sq ft roof. How many 300 watt solar panels do I Need?

As a general rule of thumb, you need between 8 and 20 300-watt solar panels to power outage a typical home. However, the exact number of panels you need will depend on the specific energy needs of your home and the amount of available space for solar panels. How many batteries can a 300 Watt Solar Panel charge?

.

How big is a 300 watt solar panel?

A typical 300-watt solar panel is 65.8 inches long and 36.1 inches wide. It takes up 16.5 sq ft of area. If you have a 1000 sq ft roof, and you can use 75% of that roof area for solar panels, you can theoretically put 45 300-watt solar panels on a 1000 sq ft roof. A typical 400-watt solar panel is 79.1 inches long and 39.1 inches wide.

Can a 300 watt solar panel run a small home?

A 300-watt power rating for a solar panel is ideal for several types of solar setups, and you can use an array of 300-watt panels to power a small home. Depending on your situation, though, weaker or stronger panels could be a better choice. What can 300-watt solar panels run?

.

How many volts can a 300 watt solar panel send?

Most 300-watt solar panels are designed to send 12 or 24 volts of electrical power at amperage rates between 9 and 16 amps. For a single 300-watt solar panel, a 20-amp charge controller can handle the production for safe use in a

battery.

How many watts can a 300 watt panel produce?

Example: A 300-watt panel can produce 300 watts of power per hour under optimal sunlight. The amount of energy a battery can store and supply.

Example: A battery with 10 kWh capacity can power a 1 kW device for 10 hours. The duration for which a battery can supply energy without being recharged.

How many watts of solar panels do I Need?

You need around 800-1000 watts of solar panels to charge most of the 48V lead-acid batteries from 50% depth of discharge in 6 peak sun hours with an MPPT charge controller. You need around 1600-2000 watts of solar panels to charge most of the 48V lithium batteries from 100% depth of discharge in 6 peak sun hours with an MPPT charge controller.

How big a solar panel should I use for 300 watts



Solar Panel And Battery Sizing Calculator

Specify the solar panel wattage you plan to use. The result will estimate how many panels you need to meet your energy goals. Enter the battery storage capacity, allowing the ...

[Get a quote](#)

What Size Solar Panel Do I Need to Charge a 12v ...

How many solar panels you need to charge a 12v battery? Calculating the number of solar panels for your 12V battery depends on understanding your ...



[Get a quote](#)



What Can A 300 Watt Solar Panel Run? Size, Cost, & Specifications

In this article, we are going to cover everything that you need to know about 300-watt solar panels, including the specs, price, power, and much more. Keep reading to begin your cleaner ...

[Get a quote](#)

What Can A 300 Watt Solar Panel Run? Size, Cost, & Specifications

The total dimensions of a solar panel with a capacity of 300 watts are ultimately determined by several criteria, the most important of which are the size, quantity, and efficiency of the solar ...



[Get a quote](#)



300-watt Solar Panels: What to Know (2025)

A 300-watt power rating for a solar panel is ideal for several types of solar setups, and you can use an array of 300-watt panels to power a small ...

[Get a quote](#)

What Can Be Powered by a 300-Watt Solar Panel?

A solar panel with a power output of 300 watts is sufficient to run an 82-inch television. The majority of solar panel producers offer a 20- or 25 ...

[Get a quote](#)



What is the length and width of a 300w solar panel? , NenPower

For a 300-watt solar panel, the


☒ IP65/IP55 OUTDOOR CABINET

☒ IP54/55

☒ OUTDOOR ENERGY STORAGE CABINET

☒ OUTDOOR MODULE CABINET

dimensions typically hover around 66 inches in length and 39 inches in width. Such sizes are not arbitrary; they serve functional purposes by ...

[Get a quote](#)

Calculate What Size Solar Panel For Fridge (Using ...

HATE CALCULATIONS? Use the calculator given below to figure out what size of solar panel you need to run your fridge. What Size Solar Panel For Fridge? in short, ...

[Get a quote](#)


The best solar panel size guide every homeowner needs

Learn how to choose the ideal solar panel size for your home with charts, standard dimensions, and tips to calculate size per kW in this complete ...

[Get a quote](#)

The best solar panel size guide every homeowner needs

Learn how to choose the ideal solar panel size for your home with charts, standard dimensions, and tips to

calculate size per kW in this complete guide.

[Get a quote](#)

18650^{3.7V}
Li-ion
RECHARGEABLE BATTERY
2000mAh



Solar Panel Size Calculator

Use our solar panel size calculator to find out what size solar panel you need to charge your battery in desired time. Simply enter the battery specifications, including Ah, volts, ...

[Get a quote](#)

300-watt solar panels: Are they right for you?

Most solar panels installed on homes or businesses today are between 250 to 365 watts per panel; solar panels above and below that range are also available. To determine if ...

[Get a quote](#)



How to Size a Solar System [Step-by-Step Guide]

Once you have your final array size, simply divide by the wattage of your desired solar panels to figure out how



many panels you need. Using our example of a ...

[Get a quote](#)

How to Size a Solar System [Step-by-Step Guide]

Once you have your final array size, simply divide by the wattage of your desired solar panels to figure out how many panels you need. Using our example of a 7.2 kW (7,200-watt) array for ...



[Get a quote](#)



Charging 300Ah Battery: Everything You Need (Solar ...

Selecting the right size solar panel, charge controller, and wire size will allow you to recharge your 300Ah battery in desired hours.

[Get a quote](#)

What is the length and width of a 300w solar panel?

For a 300-watt solar panel, the dimensions typically hover around 66

inches in length and 39 inches in width. Such sizes are not arbitrary; they ...

[Get a quote](#)



Choosing and Sizing Batteries, Charge Controllers ...

The inverter's surge rating should cover these temporary increases. Example: A room has two 60 watt light bulbs and a 300 watt desktop computer. The ...

[Get a quote](#)

What Can A 300 Watt Solar Panel Run? Size, Cost,

In this article, we are going to cover everything that you need to know about 300-watt solar panels, including the specs, price, power, and much more. Keep ...

[Get a quote](#)



300-watt Solar Panels: What to Know (2025) , ConsumerAffairs®

So, while four 300-watt panels could create a small off-grid system, you'd



likely need 20 to 40 300-watt panels to cover your home's energy use throughout the entire year. Keep in ...

[Get a quote](#)

3-In-1 Solar Calculators: kWh Needs, Size, Savings, ...

Adequate solar panel planning always starts with solar calculations. Solar power calculators can be quite confusing. That's why we simplified them and created ...



[Get a quote](#)



300 Watts Solar Panel: The Complete Buying Guide [2025]

Looking for the best 300 Watts solar panel? Our guide covers everything you need to know about choosing the right solar panels for your needs and budget.

[Get a quote](#)

Solar Panel To Battery Ratio (Kw + Watts)

Matching solar panel to battery size Let's take a look at the general rule of thumb mentioned earlier: a 1:1 ratio of

batteries and watts. A 200-watt ...

[Get a quote](#)



PVWatts Calculator

NREL's PVWatts ® Calculator Estimates the energy production of grid-connected photovoltaic (PV) energy systems throughout the world. It allows homeowners, small building owners, ...

[Get a quote](#)

Solar Generator Size Calculator

Use our solar generator size calculator to determine the right solar generator capacity for your needs. Calculate power requirements for your devices and ...

[Get a quote](#)



What size charge controller for 200w, 250w, 300w, 400w, 500w, ...

The rule of thumb is that different solar panels use different charge controllers

due to the difference in size. For instance, a solar charge controller for a 200w is smaller than a ...

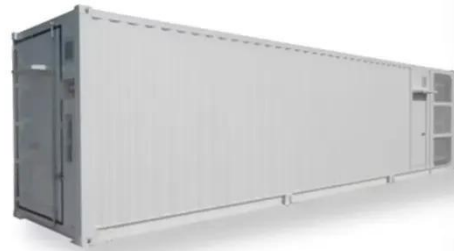
[Get a quote](#)



300 Watts Solar Panel: The Complete Buying Guide ...

Looking for the best 300 Watts solar panel? Our guide covers everything you need to know about choosing the right solar panels for your ...

[Get a quote](#)



What can a 300 watt solar panel run? , Renogy US

By multiplying 20 amps by 12 volts, 240 watts is how big of a panel you would need, so we'd recommend using a 300w solar panel or three 100-watt solar panels. You'll still have your ...

[Get a quote](#)

Contact Us

For catalog requests, pricing, or partnerships, please visit:
<https://www.zenius.co.za>