

## SolarMax Energy Systems

# How big a solar panel should I use for 20W on-site energy



✓ TELECOM CABINET

✓ BRAND NEW ORIGINAL

✓ HIGH-EFFICIENCY



## Overview

---

How much space does a solar panel take up?

One residential solar panel is often around 1.7 m<sup>2</sup> in area. A common 6.6 kW system might take up 29 – 32 m<sup>2</sup> of roof space, depending upon the rated capacity of the panels. Panels can be installed in portrait or landscape orientation to make the best use of the available roof space.

How many amps can a 20W solar panel produce?

Under optimum conditions, a 20W solar panel can create 1.34 amps per hour. For example, under perfect conditions, the panel will produce 20 Watts for 7 hours per day, 7 days per week, for 980 Watts. To reduce total charging time, you can connect several panels.

What is a good wattage solar panel?

High-quality residential solar installations in the US typically utilize solar panels rated between 250W and 430W. While lower-wattage solar panels (below 250W) may work for small, off-grid systems, higher-wattage solar panels are better suited for commercial or utility installations with fewer space restraints than residential rooftops.

How big should a solar system be?

The amount of available sunny roof area can often be a limiting factor when deciding what system size to install, particularly for household solar systems in urban areas. One residential solar panel is often around 1.7 m<sup>2</sup> in area. A common 6.6 kW system might take up 29 – 32 m<sup>2</sup> of roof space, depending upon the rated capacity of the panels.

How many kW is a 20 watt solar panel?

Usually, it is 1.2 to 1.5 which is multiplied by the desired output. For example with a 20% buffer, the required solar panel output with Buffer (Watts) = 6 kW × 1.20 = 7.2 kW Nevertheless, when you are choosing solar panels make

sure their power ratings equal or surpass the required output to meet your energy needs and preferences.

How many solar panels do I Need?

With an average monthly energy consumption of 800 kWh and 5 sunlight hours daily, Alex uses the Solar Panel Size Estimator to determine the number of panels required. Upon entering the data, the calculator suggests installing approximately 15 panels, each with a 300W capacity.

## How big a solar panel should I use for 20W on-site energy

---



### Standard Solar Panel Sizes And Wattages (100W ...

Hopefully, this average solar panel size chart by solar panel wattage makes things a little clearer now. If you have any questions or suggestions on what to ...

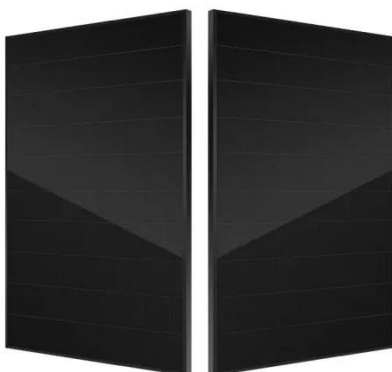
[Get a quote](#)

---

### How to Size a Solar System [Step-by-Step Guide]

Under optimum conditions, a 20W solar panel can create 1.34 amps per hour. For example, under perfect conditions, the panel will produce ...

[Get a quote](#)



### Guide to Solar Panel Size and Wattage: Choosing the ...

While lower-wattage solar panels (below 250W) may work for small, off-grid systems, higher-wattage solar panels are better suited for ...

[Get a quote](#)

---

## Solar Panel Size Calculator for

## 12V Battery Charging

Use our Solar Panel Size Calculator to determine the perfect panel for charging your 12V battery. Input capacity, voltage, and sun hours for results.

[Get a quote](#)



## Solar Panel Sizes: Choosing the Right Dimensions for Any Project

Choosing the right solar panel size can make or break your system's performance. In this guide, we break down how to match your energy needs, roof space, and budget with ...

[Get a quote](#)

## Solar Panel: at Temu(TM) , Solar Panel: Up To 90% Off

Only Today, Enjoy Solar Panel: Up To 90% Off Your Purchase. Hurry & Shop Now. Stop swiping down the screen. Big discounts on our products here - up to 90% off!

[Get a quote](#)



## Size your solar system

The size of a rooftop solar system refers to the total power-generating capacity of all the solar panels, measured in

kilowatts (kW). The system size depends on the number of solar panels ...

[Get a quote](#)



---

## NAZ Solar Electric , View Our Inventory Online

NAZ Solar Electric has all of the solar power equipment you need to power your system. High-Efficiency Solar Panels at Competitive Prices , NAZ Solar Electric

[Get a quote](#)



---

## Solar Panel Sizes: Choosing the Right Dimensions for ...

Choosing the right solar panel size can make or break your system's performance. In this guide, we break down how to match your ...

[Get a quote](#)

---

## The best solar panel size guide every homeowner needs

Solar cells are assembled in grids, and the most common configurations are 60-cell panels for residential use and

72-cell panels for ...

[Get a quote](#)



## Solar Panel Sizes and Wattage Explained

To calculate the required system size, multiply the number of panels by the output. For example, a 6.6 kW solar system typically consists of 20 panels each delivering 330W of ...

[Get a quote](#)

## Solar Panel Size Estimator Calculator

The Solar Panel Size Estimator Calculator is a tool designed to help you determine the appropriate size of solar panels needed for your specific energy requirements.

[Get a quote](#)



## Guide to Solar Panel Size and Wattage: Choosing the Right Panel ...

While lower-wattage solar panels (below





250W) may work for small, off-grid systems, higher-wattage solar panels are better suited for commercial or utility installations ...

[Get a quote](#)

---

## How Many Solar Panels Do I Need?

1 day ago· Wondering how many solar panels you need? Learn how to calculate panel needs, understand peak sun hours, and see real examples to size your solar system right.

[Get a quote](#)



## How Many kWh Does A Solar Panel Produce Per Day?

If we know both the solar panel size and peak sun hours at our location, we can calculate how many kilowatts does a solar panel produce per day using this equation: Daily kWh Production ...

[Get a quote](#)

---

## The 9 Best Solar Chargers of 2025 , Tested & Rated

There's a big difference between a massive unfolding set of solar panels for camping and a small, lightweight,



portable solar charger for ...

[Get a quote](#)



## 17 Things You Can Do With a Small Solar Panel

Large solar arrays are often used to supply homes and businesses with electricity, but what can you do with the small ones? Are they useful or ...

[Get a quote](#)

## 20 Watt Solar Panels (Power - Charge - Kits - Control)

Under optimum conditions, a 20W solar panel can create 1.34 amps per hour. For example, under perfect conditions, the panel will produce 20 Watts for 7 hours per day, 7 days ...

[Get a quote](#)



## How to Estimate Solar System Size - Complete Design Guide

System Size (kW) = Daily Energy Use ÷ Peak Sun Hours × 1.2. The multiplier (1.2) accounts for system losses from



wiring, shading, and inverter inefficiencies. How Many Solar ...

[Get a quote](#)

---

## Size your solar system

One residential solar panel is often around 1.7 m<sup>2</sup> in area. A common 6.6 kW system might take up 29 - 32 m<sup>2</sup> of roof space, depending upon the rated capacity of the panels. Panels can be ...

[Get a quote](#)



## Solar Panel Car Battery Charger (Sizes/Timing + Advice)

Solar panels provide clean, limitless energy with little maintenance, making them perfect to set and forget. This opens up a lot of different uses for solar panels, including battery ...

[Get a quote](#)

---

## The best portable solar chargers in 2025, tried and ...

We found the best portable solar chargers to keep your mobile devices,

flashlights, and battery packs charged and ready for camping, travel ...

[Get a quote](#)



## Can A 20W Solar Panel Charge A 12v Battery?

A 20W solar panel generates a relatively small amount of power compared to larger panels. This makes it unsuitable for powering energy-intensive devices or meeting high electricity demands.

[Get a quote](#)

## The best solar panel size guide every homeowner needs

Solar cells are assembled in grids, and the most common configurations are 60-cell panels for residential use and 72-cell panels for commercial or utility use. A 60-cell panel ...

[Get a quote](#)



## How much electricity can a 20W solar panel generate?

The amount of electricity a 20W solar panel can generate varies significantly based on a few factors. 1. The

**114KWh ESS**        

geographical location is crucial, as areas with high sunlight exposure ...

[Get a quote](#)

## Contact Us

---

For catalog requests, pricing, or partnerships, please visit:  
<https://www.zenius.co.za>