

SolarMax Energy Systems

How big a battery does a 2200W inverter require



Overview

To recharge your battery from time to time you would need the right size solar panel to do the job! Read the below article to find out the suitable solar panel size for your battery bank .

Note!The battery size will be based on running your inverter at its full capacity
Assumptions 1. Modified sine wave inverter efficiency: 85% 2. Pure sine wave inverter efficiency:90% 3. Lithium Battery:100% Depth of discharge limit 4. lead-acid.

To calculate the battery capacity for your inverter use this formula Inverter capacity (W)*Runtime (hrs)/solar system voltage = Battery Size*1.15 Multiply the result by 2 for lead-acid type.

You would need around 24v150Ah Lithium or 24v 300Ah Lead-acid Batteryto run a 3000-watt inverter for 1 hour at its full capacity .

Here's a battery size chart for any size inverter with 1 hour of load runtime
Note! The input voltage of the inverter should match the battery voltage. (For example 12v battery for 12v.

What is the recommended battery size for an inverter?

Interpreting Results: Once you input the required data, the calculator will generate the recommended battery size in ampere-hours (Ah). For instance, if your power consumption is 500 watts, the usage time is 4 hours, and the inverter efficiency is 90%, the calculator might suggest a battery size of approximately 222 Ah.

What battery should I use to run a 2,000w inverter?

Here are the recommended battery voltages with corresponding inverter sizes: Now that you know you should use a 24V battery to run a 2,000W inverter, we can look at the capacity and the C-rate. The capacity of the battery is indicated in amp hours or simply Ah. The most common battery will be 12V and 100Ah.

How much power does a 2000 watt inverter take?

If you max out the inverter at 2000 watts, you are pulling 2000 watts /12 volts = 166.6 DC amps per hour. If you use a 200-amp 12-volt battery, you would divide the 200-amp battery / 166.6 amps = 1.2 hours of run time. This is if you plan on fully depleting the battery, which we DON'T recommend. We recommend 50% depth of discharge.

What size inverter for a 200Ah battery?

To determine the appropriate inverter size for a 200Ah battery, consider the following: A 500VA inverter would be suitable, offering a balance between performance and battery life. For extended run times, consider larger inverters or additional batteries to meet higher power demands.

What is the calculate battery size for inverter calculator?

The Calculate Battery Size for Inverter Calculator helps you determine the optimal battery capacity needed to support your inverter system. By inputting critical parameters such as power consumption, inverter efficiency, and desired usage time, this calculator provides a precise battery size recommendation tailored to your specific needs.

How much battery do I need to run a 3000-watt inverter?

You would need around 24v 150Ah Lithium or 24v 300Ah Lead-acid Battery to run a 3000-watt inverter for 1 hour at its full capacity Here's a battery size chart for any size inverter with 1 hour of load runtime Note! The input voltage of the inverter should match the battery voltage.

How big a battery does a 2200W inverter require



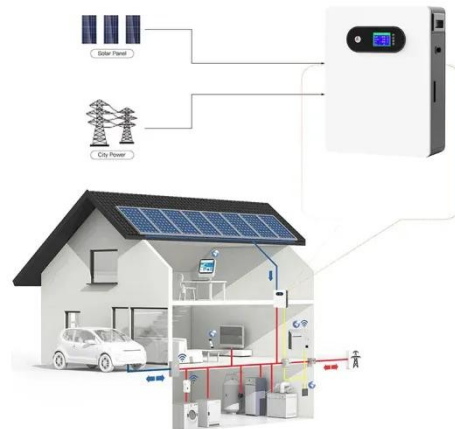
How to Calculate Battery Size for Inverters of Any Size

In order to size a battery bank, we take the hours needed to continuously run your inverter and multiply them by the number of watts the inverter is designed for. This equals the total watt ...

[Get a quote](#)

What Size Inverter Can I Run Off a 100Ah Battery? A ...

Understanding Battery and Inverter Basics Battery Capacity and Inverter Compatibility A 100Ah battery signifies its capacity to deliver 100 ampere-hours of current. This ...



[Get a quote](#)



Power Inverter Cable Size

See the blog here: <https://wagan/blogs/news/customer-question-what-cables-do-i-need-for-my-power-inverter> Answer: Which cables you need are based on - How

[Get a quote](#)

Calculate Battery Size For Any

Size Inverter (Using Our Calculator)

To recharge your battery from time to time you would need the right size solar panel to do the job! Read the below article to find out the suitable solar panel size for your battery bank

[Get a quote](#)



Calculate Battery Size for Inverter Calculator

Estimate the battery capacity required for your inverter based on power load, runtime, and efficiency. Using the Calculate Battery Size for Inverter Calculator can ...

[Get a quote](#)

How to Calculate the Right Inverter Battery Capacity ...

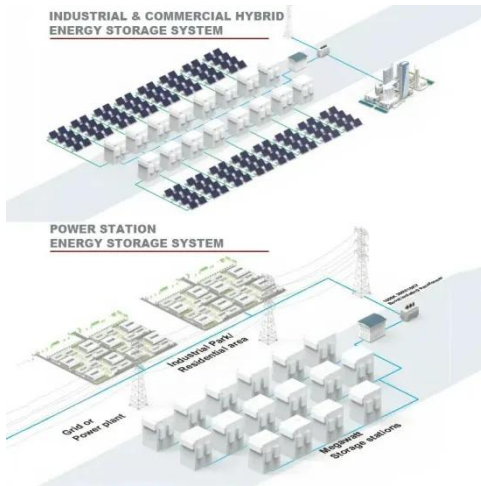
Learn how to calculate the right inverter battery capacity for your needs with a simple formula. Understand power requirements, efficiency ...

[Get a quote](#)



How to Calculate the Right Inverter Battery Capacity for Your Needs

Learn how to calculate the right inverter battery capacity for your needs with a



simple formula. Understand power requirements, efficiency losses, and the best battery types ...

[Get a quote](#)

How Many Batteries for a 2000 watt Inverter?

Do you need to know how many batteries you need for a 2,000W inverter? Read this article for calculations and diagrams of different battery ...



[Get a quote](#)



What Size Inverter You Need (Calculations + Battery)

The size of the inverter required will be determined by the total wattage of the appliances you need to operate and the time they need to run. ...

[Get a quote](#)

Solar Battery Size Guide: kWh, Inverter & Runtime

2 days ago · Size your solar battery using load profile, critical loads, efficiency and DoD. Calculator matches kWh, inverter

and runtime for code-compliant installs.

[Get a quote](#)



HowTo: How to Size an Alternator for use with

Generally speaking, you will need an alternator that is at least 5 x the peak requirement for the drive. This is not specific and in some cases the multiple can be as high as 7 x the drive size. ...

[Get a quote](#)

How Many Batteries Do I Need For A 2000 Watt ...

In summary, for an inverter 2000 watt 12 volt, we recommend selecting a 12V battery with a capacity of at least 100Ah and choosing the ...



[Get a quote](#)

Help: Calculating battery sizes and inverter sizes?

You're not going to find a 208 Amp hour battery. You would probably go up to 320 Amp hour L16's, and raise the



charge rate correspondingly. There should be no trouble charging this ...

[Get a quote](#)

What Size Inverter Do I Need to Run an Air Fryer?

These things have a reputation for consuming a lot of power, so what inverter size will you need? A 2000 watt inverter is going to be enough to run an air fryer. A 350ah battery can power the ...



[Get a quote](#)



Understanding Battery Capacity and Inverter Compatibility

In this guide, we will delve into the practical aspects of converting amp-hours to watt-hours, calculating battery run times, and determining the right inverter size, among other ...

[Get a quote](#)

How Many Batteries Do I Need for My Inverter?

The answer to the question of how many batteries are needed depends on how long you want to operate the inverter at that load and, ultimately, how many ...

[Get a quote](#)



How Many Batteries for a 2000 watt Inverter? + Diagrams

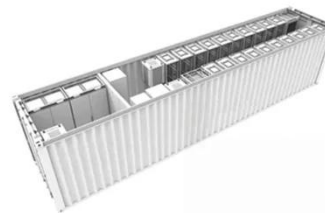
Do you need to know how many batteries you need for a 2,000W inverter? Read this article for calculations and diagrams of different battery configurations.

[Get a quote](#)

How to Calculate the Right Battery Size for Your ...

To help you find the perfect match, here's a step-by-step guide to calculate battery size based on your power needs and inverter specifications. Step 1: ...

[Get a quote](#)



Calculate Battery Size for Inverter Calculator

The Calculate Battery Size for Inverter Calculator helps you determine the optimal battery capacity needed to

support your inverter system. By inputting critical parameters such ...

[Get a quote](#)



How to Calculate the Right Battery Size for Your Inverter System

To help you find the perfect match, here's a step-by-step guide to calculate battery size based on your power needs and inverter specifications. Step 1: Determine Your Power Requirements

[Get a quote](#)



What Circuit Breaker Size For a 2000W inverter?

If you are going to install a 2000W inverter for instance, make sure you have the right circuit breaker to protect your appliances. A 2000 12V watt inverter requires a 250A circuit breaker

...

[Get a quote](#)

How Many Batteries Do I Need for My Inverter?

The answer to the question of how many batteries are needed depends on how long you want to operate the inverter at that load and, ultimately, how many amps you need to support.

[Get a quote](#)



Contact Us

For catalog requests, pricing, or partnerships, please visit:
<https://www.zenius.co.za>