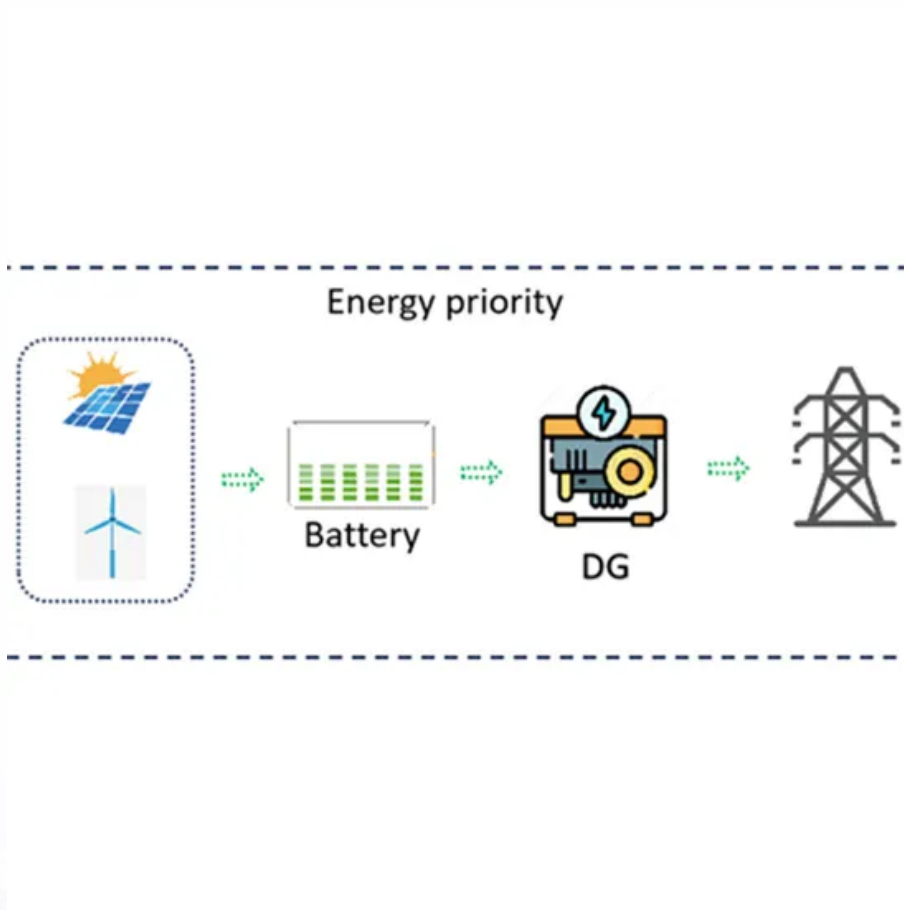


SolarMax Energy Systems

High voltage battery connected to inverter



Overview

How to connect inverter to battery?

A key safety measure in how to connect inverter to battery is the installation of fuses or circuit breakers to protect against overload or short circuits. Properly tightening the terminal connections to ensure a stable electrical flow without over-tightening. Recommend using a multimeter to check the voltage and verify that connections are secure.

Do inverters need to be connected to batteries?

Connecting inverters to batteries is an important part of an off-grid power solution or backup power system, and the right connections ensure that the system runs efficiently.

Do inverters and batteries need to match?

The inverter and batteries must match in terms of voltage, capacity, and power output. If you are using a 12V battery, then the input voltage of the inverter must match the battery voltage. If the specifications of the battery and the inverter do not match, the system will not operate stably and may even damage the equipment.

Can a 12V battery be used as an inverter?

If you are using a 12V battery, then the input voltage of the inverter must match the battery voltage. If the specifications of the battery and the inverter do not match, the system will not operate stably and may even damage the equipment. In addition, choose the right inverter power and battery capacity for your home or commercial needs.

Are hybrid inverters compatible with lithium batteries?

Compatibility is the first and foremost consideration when setting up communication between a lithium battery and a hybrid inverter. Not all inverters are compatible with all lithium batteries. Therefore, it is crucial to

ensure that the inverter you choose is designed to work with the specific type of lithium battery you plan to use.

What does a battery inverter do?

The inverter is responsible for converting DC (direct current) power stored in the battery into AC (alternating current) power, which is what most household appliances and electronic devices require to operate.

High voltage battery connected to inverter



Compatible Batteries for Your Solis Inverter : Service Center

Find out which batteries are compatible with your Solis inverter. Check our guide for supported models and key compatibility details for optimal performance.

[Get a quote](#)

A high voltage battery for a three-phase solar hybrid inverter

When a three-phase high voltage hybrid inverter is working with a high-voltage lithium battery system, the battery system provides DC power to the inverter. The inverter then ...



[Get a quote](#)



Can I Attach My Small Inverter Directly to the Battery?

Yes, you can attach a small inverter directly to a battery, but doing it safely requires understanding voltage compatibility, wire sizing, and overload risks. Many DIYers assume it's ...

[Get a quote](#)

Any Hybrid Inverters work with DIY batteries?

@1.21 Gigawatts - Yes, It's possible to connect DIY battery to hybrid inverter, but it depends on the inverter and battery setup. If we are talking about hybrid inverters with a LV battery there

...

[Get a quote](#)



How Inverters Work with Batteries: A Beginner's ...

An inverter changes DC power from a 12 Volt deep-cycle battery into AC power. The battery discharges while the inverter provides power. You ...

[Get a quote](#)

How to Connect an Inverter to a Battery: Step-by-Step ...

Properly connecting your inverter to a battery is essential for a reliable and efficient power backup system. By following the steps outlined in this guide,

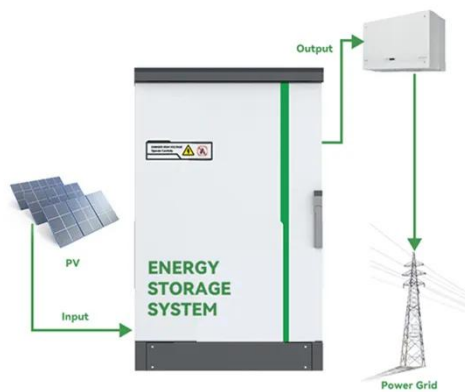
...

[Get a quote](#)



Choosing The Right Inverter Cables: A Guide To Safe ...

There are two types of inverter cables. The DC cable, which functions as the input part of the inverter, must be



selected based on the current capacity and cable ...

[Get a quote](#)

Connecting Inverters and Batteries for Maximum Efficiency

Connecting an inverter to two parallel batteries, learning how to connect two inverter generators in parallel, and understanding the nuances of connecting two inverters in parallel ...

[Get a quote](#)



Application scenarios of energy storage battery products



Model 3 Inverter Power Connection - Otmar's Variety ...

The VC Front has an e-Fuse that disconnects this terminal from the 12V battery when the car is asleep, but as long as the car is awake the ...

[Get a quote](#)

Hybrid Inverter and Lithium Batteries: Setup Guide ...

set up communication between lithium batteries and a hybrid inverter with our

detailed step-by-step guide. Ensure optimal performance and longevity of your ...

[Get a quote](#)



How to connect inverter to battery: a step-by-step guide for safe ...

We'll explore how to connect inverter to battery, its purpose, and the tools needed for a proper and safe connection. Connecting an inverter to a battery is a crucial step in setting ...

[Get a quote](#)

How to Safely Connect a Battery to an Inverter: A Step-by-Step ...

Learn how to safely connect your batteries to your inverter with our guide. Avoid common wiring mistakes to optimize performance and extend system life.

[Get a quote](#)



How to Safely Connect a Battery to an Inverter: A ...



Learn how to safely connect your batteries to your inverter with our guide. Avoid common wiring mistakes to optimize performance and extend ...

[Get a quote](#)

How to Connect an Inverter to a Battery: Step-by-Step Guide for ...

Properly connecting your inverter to a battery is essential for a reliable and efficient power backup system. By following the steps outlined in this guide, you can ensure a safe and seamless setup.



[Get a quote](#)

A high voltage battery for a three-phase solar hybrid ...

When a three-phase high voltage hybrid inverter is working with a high-voltage lithium battery system, the battery system provides DC power to ...

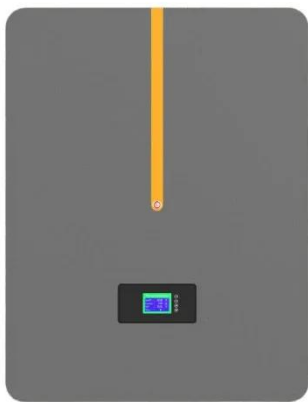
[Get a quote](#)



Inverters that support high voltage (500v) storage batteries

I'm in Japan (100v 60hz) and am researching the best inverter brand and model to buy for a DIY solar build. I intend to connect a Leaf 24kWh battery to it for home storage. I'm a ...

[Get a quote](#)



High Voltage vs. Low Voltage: What's the Best for ...

Typical battery inverters are rated at 48V or above and can handle both high and low voltage batteries. When choosing an inverter for a low ...

[Get a quote](#)

How to Connect a Large or Small Inverter to a Battery

Making the Decision: How to connect the Inverter When does a small inverter's power come from a 12V DC outlet and when does that inverter ...

[Get a quote](#)



ENERGY STORAGE SYSTEM

Product Model
HJ-ESS-215A(100KW/215KWh)
HJ-ESS-115A(50KW 115KWh)

Dimensions
1600*1280*2200mm
1600*1200*2000mm

Rated Battery Capacity
215KWH/115KWH

Battery Cooling Method
Air Cooled/Liquid Cooled



How Inverters Work with Batteries: A Beginner's Complete Guide ...

An inverter changes DC power from a 12 Volt deep-cycle battery into AC power.



The battery discharges while the inverter provides power. You can recharge the battery using ...

[Get a quote](#)

High voltage batteries with inverters. : r/solar

If car batteries are much higher than voltage inputs of the inverter, that would pose an issue. I also thought off the top of my hand they were usually higher voltage (1000vdc) which would most ...



[Get a quote](#)

ESS



Inverters that support high voltage (500v) storage ...

I'm in Japan (100v 60hz) and am researching the best inverter brand and model to buy for a DIY solar build. I intend to connect a Leaf 24kWh ...

[Get a quote](#)

Power inverter

A typical power inverter device or circuit requires a stable DC power source capable of supplying enough current for the intended power demands of the

system. The input voltage depends on ...

[Get a quote](#)



11 Features You Should Know About Deye 50kW Three Phase

The Deye 50kW Three Phase Hybrid Inverter features lithium Ion batteries with a max. voltage of 800V (the battery voltage range is 160-800V). This elevated voltage not only enhances the ...

[Get a quote](#)

How to connect inverter to battery: a step-by-step ...

We'll explore how to connect inverter to battery, its purpose, and the tools needed for a proper and safe connection. Connecting an inverter to a ...

[Get a quote](#)



4 Smart Ways to Connect Battery to Inverter ? , Avoid Voltage ...



Learn 4 effective methods to connect a battery to an inverter safely and efficiently! This quick guide explains how current, cable resistance, and voltage drop affect your system's

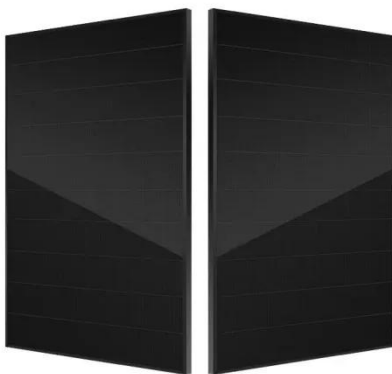
[Get a quote](#)

High voltage batteries with inverters. : r/solar

If car batteries are much higher than voltage inputs of the inverter, that would pose an issue. I also thought off the top of my head they were usually higher voltage (1000vdc) ...



[Get a quote](#)



Hybrid Inverter and Lithium Batteries: Setup Guide and Best ...

set up communication between lithium batteries and a hybrid inverter with our detailed step-by-step guide. Ensure optimal performance and longevity of your energy storage system by ...

[Get a quote](#)

BATTERY ENERGY STORAGE SYSTEMS (BESS)

Central solar inverters are often

associated with combiner boxes that group the output from individual solar strings, facilitating the convergence of DC outputs into a singular circuit that ...

[Get a quote](#)



Contact Us

For catalog requests, pricing, or partnerships, please visit:
<https://www.zenius.co.za>