

## SolarMax Energy Systems

# Does photovoltaic inverter consume electricity when operating



## Overview

---

Why does an inverter consume a lot of power?

This may sound confusing because at times when the inverter is not connected to any load then also it consumes power. It is because inverters produce waveforms even on standby mode and the larger the inverter is the more power it needs to start.

How much power does an inverter draw from a battery?

The amount of power drawn from a battery by an inverter, even when there is no load attached, is called the "idle" or "no-load" consumption of the inverter. The average draw from the batteries when an inverter is turned on with no load attached depends on the efficiency of the inverter and its standby power consumption.

Will a solar inverter deplete your power during a power outage?

Worried that all the power generated by the solar panels and stored in the batteries will be depleted by the inverter, even though it is not connected to the load, to the point where you can't use your appliances properly during a power outage?

.

What is the difference between a power inverter and a solar inverter?

Solar inverters or power inverters both have the same function with one slight difference. Solar inverters take direct current from solar panels and transfer the converted current to solar batteries. Whereas normal inverters take current from batteries and transfer the alternating current to the connected appliances.

Does a solar inverter have a power saving mode?

Some inverters, such as PowMr Sunsmart 10K have power-saving mode can

help reduce idle consumption by 5-10W. Users can set the saving mode when there is no large load connected to the system. Power-saving mode is a feature in some solar inverters that allows them to reduce their power output when the demand for electricity is low.

How much power does a 1000W inverter use?

In general, the standby power consumption of most inverters is relatively low, typically less than 1% of their rated power output. For a 1000W inverter, the average idle power consumption could be around 10-20 watts, while for a 2000W inverter, it could be around 20-40 watts.

## Does photovoltaic inverter consume electricity when operating

---



### On Grid Inverter: Basics, Working Principle and Function

When the islanding effect of the inverter occurs, it will cause great safety hazards to personal safety, power grid operation, and the inverter itself. Therefore, the grid connection ...

[Get a quote](#)

### How Does a Solar Inverter Work? Understanding Its Function, ...

Discover how does a solar inverter work by converting DC to AC power, ensuring efficient energy use and enhancing solar power systems for a sustainable future.

[Get a quote](#)



### What Does a Solar Inverter Do?: Types, Benefits, ...

A solar energy system wouldn't power your home without a solar inverter. Learn about the types, benefits, costs, and functionality of solar ...

[Get a quote](#)

## PVWatts Calculator

NREL's PVWatts ® Calculator Estimates the energy production of grid-connected photovoltaic (PV) energy systems throughout the world. It allows homeowners, small building owners, ...

[Get a quote](#)



## How Much Power Does Solar Inverter Use and How to Create the ...

Massive inverters typically consume more power even when not active. However, more efficient inverters convert more sunlight into consumable power, requiring less extra ...

[Get a quote](#)

## How Much Energy Does A Solar Inverter Use

A solar inverter is a converter that converts or inverts the direct current (DC) energy produced by a solar panel, making it possible to power your home with solar energy. ...

[Get a quote](#)



## How Much Power Does a Solar Inverter Use: An Overview

Solar inverters can consume up to 40



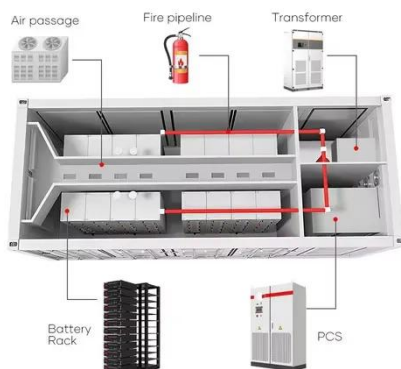
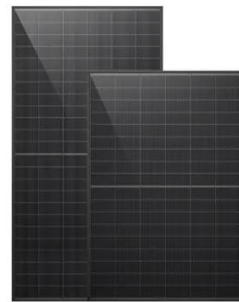
watts of power even when not in use, impacting the overall energy output of your solar system. Inverter efficiency, size, and ...

[Get a quote](#)

## What Does An Inverter Do? Complete Guide To ...

Conclusion Inverters are the unsung heroes of our electrical world, quietly converting power between DC and AC to enable everything from ...

[Get a quote](#)



## How much energy does an inverter consume?

An inverter itself consumes a small amount of energy, usually between 5 and 20 watts during operation. Thanks to the high efficiency of modern inverters, their own consumption hardly ...

[Get a quote](#)

## How much power does an Inverter use just sitting there idling?

In the tech data, I'm supposed to give the inverter a "few seconds" before

applying a load, so you could probably figure a way to do that. I'm sure applying the load while ...

[Get a quote](#)



## Calculations for a Grid-Connected Solar Energy System

The grid-connected system consists of a solar photovoltaic array mounted on a racking system (such as a roof-mount, pole mount, or ground mount), connected to a combiner box, and a ...

[Get a quote](#)

## Do Photovoltaic Inverters Consume Power When Idle?

The Silent Energy Drain You Never Noticed Ever wondered if your solar system's photovoltaic inverter secretly sips electricity like a midnight fridge raider? The answer might surprise you.

...

[Get a quote](#)



## Does a solar inverter use a lot of electricity



Following this, it's crucial to understand that a solar inverter does consume some electricity, but the amount is relatively minor when compared to the energy it helps you ...

[Get a quote](#)

## Does a solar inverter use a lot of electricity

In terms of power consumption, the solar inverter itself uses a small amount of electricity. Typically, it uses less than 1% of the total energy ...

[Get a quote](#)



## Understanding Inverter Power Consumption: Do Inverters Use ...

One common question that arises is: do inverters consume power when they're not actively being used? This article will explore this topic in detail, breaking down the ...

[Get a quote](#)

## Solar Inverters: Everything You Need To Know

Solar inverters are an essential part of a solar energy system. But what exactly

do they do and does every solar system need one? In this simple guide for beginners, we look at the functions ...

[Get a quote](#)



## Does a solar inverter use a lot of electricity

Following this, it's crucial to understand that a solar inverter does consume some electricity, but the amount is relatively minor when compared ...

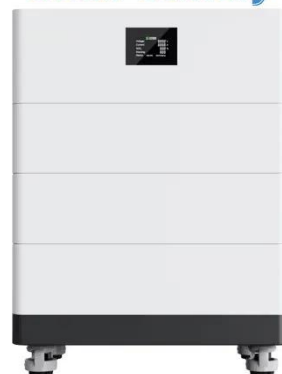
[Get a quote](#)

## How much power does an inverter use on standby - PowMr

The average draw from the batteries when an inverter is turned on with no load attached depends on the efficiency of the inverter and its standby power consumption. In ...

[Get a quote](#)

## High Voltage Solar Battery



## How Much Electricity Does A PV Inverter Use?

However, as with any electrical device, PV inverters consume some amount of



electricity themselves. In this article, we will explore how much electricity PV ...

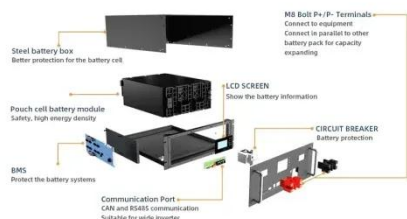
[Get a quote](#)

## How Much Power Does An Inverter Draw With No Load?

Every inverter is featured with a no-load consumption facility. The amount of electricity consumed by a battery charger (inverter) when it is plugged into the socket is known ...



[Get a quote](#)



## How Much Power Does An Inverter Draw With No Load?

The average draw from the batteries when an inverter is turned on with no load attached depends on the efficiency of the inverter and its standby ...

[Get a quote](#)

## Inverter Specifications and Data Sheet

The article provides an overview of inverter functions, key specifications, and common features found in inverter

systems, along with an example of power ...

[Get a quote](#)



## What Does an Inverter Do, and How Does It Work , Renogy US

An inverter converts DC power from batteries or solar panels into AC power for household appliances. It's essential for off-grid systems, RVs, and backup power, enabling the use of ...

[Get a quote](#)

## Does a solar inverter use a lot of electricity

In terms of power consumption, the solar inverter itself uses a small amount of electricity. Typically, it uses less than 1% of the total energy produced by the solar panels. For ...

[Get a quote](#)



## How Much Power Does a Solar Inverter Use: An ...

Solar inverters can consume up to 40 watts of power even when not in use, impacting the overall energy output of

your solar system. Inverter ...

[Get a quote](#)



## Photovoltaic system

A photovoltaic system, also called a PV system or solar power system, is an electric power system designed to supply usable solar power by means of photovoltaics. It consists of an ...

[Get a quote](#)



48V 100Ah

## How Much Electricity Does A PV Inverter Use?

However, as with any electrical device, PV inverters consume some amount of electricity themselves. In this article, we will explore how much electricity PV inverters use, and why this ...

[Get a quote](#)

## Solar Inverters: A Complete Guide

Solar panels generate electricity through the photovoltaic effect, which produces direct current (DC) electricity. DC is the

natural output of solar panels because ...

[Get a quote](#)



---

## Contact Us

For catalog requests, pricing, or partnerships, please visit:  
<https://www.zenius.co.za>