

## SolarMax Energy Systems

# Does base station wind power require power



## Overview

---

Where can baseload power be provided by wind?

One place where baseload power can be provided by wind is a chain of wind turbines running along the Atlantic coast of the northern U.S. The Atlantic Wind Connection project will take advantage of wind patterns that blow sufficiently at least somewhere along that chain at all times.

Are base-load power stations necessary?

The assumptions that base-load power stations are necessary to supply base-load demand and to provide a reliable supply of grid electricity have been disproven by both practical experience in electricity grids with high contributions from renewable energy and by hourly computer simulations.

Can a power station supply base-load demand?

The old myth was based on the incorrect assumption that base-load demand can only be supplied by base-load power stations; for example, coal in Australia and nuclear in France. However, the mix of renewable energy technologies in our computer model, which has no base-load power stations, easily supplies base-load demand.

What is base load power?

Base load power is a term we're hearing a lot in discussions about our energy future. But what does it mean, and is it really relevant?

Because wind and solar are intermittent, the argument goes, we need a constant power source chugging away in the background to cover supply when the sun goes down and the wind stops.

What is a suitable way to supplement wind power?

Wind power production fluctuates, so it can be supplemented by a form of baseload power that can start up or adjust output in a relatively short period.

Hydroelectric and natural gas plants are common choices for this purpose.

What is a common choice for reserve power to supplement wind?

As wind production fluctuates, it can be supplemented if necessary by a form of baseload power which can start up or whose output can be changed in a relatively short period of time. Hydroelectric and natural gas plants are common choices for this type of reserve power.

## Does base station wind power require power

---



Standard 20ft containers



Standard 40ft containers

### baseload power

Baseload power plants are not necessary to maintain supply in an energy system dominated by wind and solar power, and only have a place in future systems if they help cut ...

[Get a quote](#)

## National Wind Watch , The Grid and Industrial Wind Power

Wind power has no effect on base load. However, since base load providers can not be ramped down, if wind turbines produce power when there is no or little peak load, the extra electricity ...

[Get a quote](#)



## Wind turbine: what it is, parts and working , Enel ...

What is a wind turbine? A wind turbine, or wind generator or wind turbine generator, is a device that converts the kinetic energy of wind (a natural and ...

[Get a quote](#)



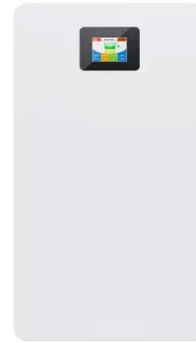
## Baseload power stations not

## needed for secure renewable

...

An energy system dominated by solar and wind energy does not require baseload power stations to guarantee supply security, German research academies have said.

[Get a quote](#)



## Base load power: The dinosaur in the energy debate

Base load power is a term we're hearing a lot in discussions about our energy future. But what does it mean, and is it really relevant?

[Get a quote](#)

## Base Load and Peak Load: understanding both concepts

Base load is the minimum level of electricity demand required. Peak load is the time of high demand. Discover examples of both base load and peak load.

[Get a quote](#)



## FEMA P-1019 Emergency Power Systems for Critical ...

Chapter 6 provides design considerations and best practices for emergency power systems in new critical

facilities, including how to decide on what functions in a critical facility ...

[Get a quote](#)



## Measurements and Modelling of Base Station Power ...

The real data in terms of the power consumption and traffic load have been obtained from continuous measurements performed on a fully ...

[Get a quote](#)



## Baseload power is a myth: even intermittent renewables will work

Baseload power is a myth: even intermittent renewables will work It's an old myth that renewable energy is unreliable in supplying base-load demand, or that it is unaffordable. ...

[Get a quote](#)

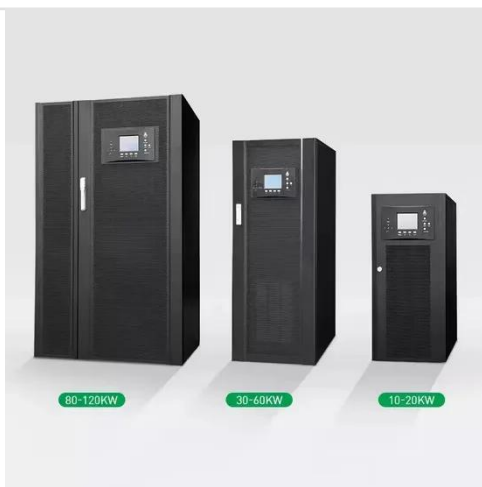
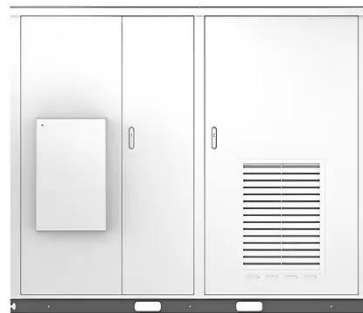
## Base load power: The dinosaur in the energy debate

Base load power is a term we're hearing a lot in discussions about our energy

future. But what does it mean, and is it really relevant?

[Get a quote](#)

Solar



## Can renewables provide baseload power?

A common myth is that because some types of renewable energy do not provide baseload power, they require an equivalent amount of backup power provided by fossil fuel ...

[Get a quote](#)

## Power (Civ6)

Mechanics Power is a late-game city stat which has demand and supply (similarly to Amenities). Demand for Power in a city is created by certain buildings; in fact, most late-game Tier 3 ...

[Get a quote](#)

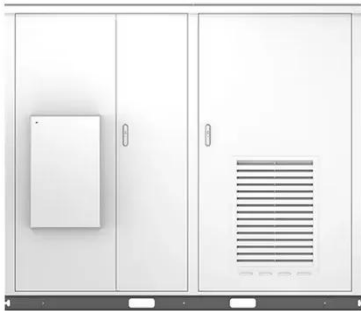


## A Comprehensive Guide to Wind Farm Construction

These projects harness the power of wind to generate electricity, reducing reliance on fossil fuels and cutting

greenhouse gas emissions. This ...

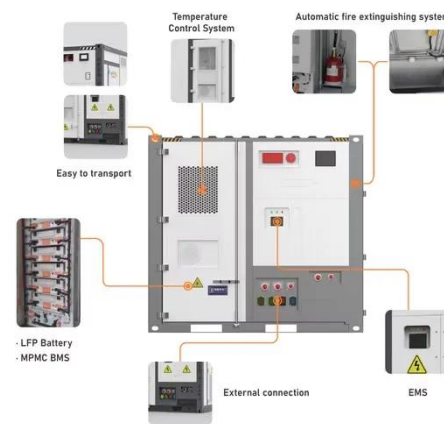
[Get a quote](#)



## Baseload power is a myth: even intermittent renewables will work

The old myth was based on the incorrect assumption that base-load demand can only be supplied by base-load power stations; for example, coal in Australia and nuclear in ...

[Get a quote](#)



## Base load , Important Energy for Continuous Power Supply

However, new findings show that renewables could soon take over the entire power supply. It is therefore entirely possible to make photovoltaic and wind power plants capable of meeting ...

[Get a quote](#)

## New Research Challenges Need for Baseload Power Plants



Baseload power plants are not necessary to maintain supply in an energy system dominated by wind and solar power, and only have a place in future systems if they help cut ...

[Get a quote](#)



## National Wind Watch , The Grid and Industrial Wind Power

The old myth was based on the incorrect assumption that base-load demand can only be supplied by base-load power stations; for example, ...

[Get a quote](#)

## ? Are base load power plants necessary when it ...

Baseload power plants are no longer absolutely necessary in the context of an energy system dominated by renewable energies. Security of ...

[Get a quote](#)



## Supplying Baseload Power and Reducing Transmission ...

It was found that an average of 33% and a maximum of 47% of yearly averaged wind power from interconnected farms



can be used as reliable, baseload electric power.

[Get a quote](#)

## Base load

Power plants that do not change their power output quickly, such as some large coal or nuclear plants, are generally called baseload power plants. [3][5][6] In the 20th century most or all of ...



[Get a quote](#)



## ? Are base load power plants necessary when it comes to ...

Baseload power plants are no longer absolutely necessary in the context of an energy system dominated by renewable energies. Security of supply can be guaranteed ...

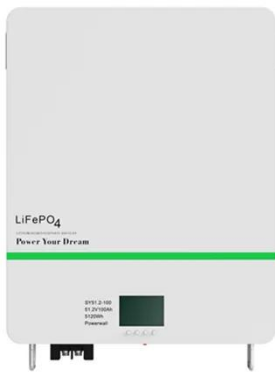
[Get a quote](#)

## Base load vs Load Follow vs Peak Load

Base Load vs Peak Load Power Plants  
Nuclear power plants may take many hours, if not days, to startup or change

their power output. Modern power ...

[Get a quote](#)



## Land-Use Requirements of Modern Wind Power Plants in the ...

Although there is no uniformly accepted single metric of land use for wind power plants, two primary indices of land use do exist - the infrastructure/direct impact area (or land temporarily ...

[Get a quote](#)

## Tempest System FAQs - WeatherFlow Support

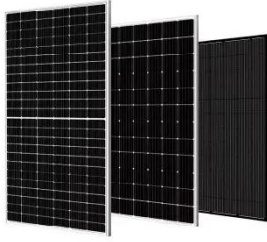
We don't recommend using the Tempest without a WiFi connection. The Hub does need to be powered, requiring a 1amp @5v power supply. Is the Tempest a scientific/professional ...

[Get a quote](#)



## DO WE NEED BASE-LOAD POWER STATIONS?

These, together with studies from



Europe, find that base-load power stations are unnecessary to meet standard reliability criteria for the whole supply-demand system, such as loss-of-load ...

[Get a quote](#)

---

## Contact Us

For catalog requests, pricing, or partnerships, please visit:  
<https://www.zenius.co.za>