

## SolarMax Energy Systems

# Do telecom base stations have backup power supplies



## Overview

---

Telecom batteries for base stations are backup power systems using valve-regulated lead-acid (VRLA) or lithium-ion batteries. They ensure uninterrupted connectivity during grid failures by storing energy and discharging it when needed. Which battery is best for telecom base station backup power?

Among various battery technologies, Lithium Iron Phosphate (LiFePO<sub>4</sub>) batteries stand out as the ideal choice for telecom base station backup power due to their high safety, long lifespan, and excellent thermal stability.

What is a telecom battery backup system?

A telecom battery backup system is a comprehensive portfolio of energy storage batteries used as backup power for base stations to ensure a reliable and stable power supply. As we are entering the 5G era and the energy consumption of 5G base stations has been substantially increasing, this system is playing a more significant role than ever before.

Should telecommunication operators invest in a telecom battery backup system?

Investing in a telecom battery backup system is always one of the priorities for telecommunication operators in the 5G era. Sunwoda 48V telecom batteries have a capacity covering 50Ah-150Ah, which can easily meet the power backup needs of macro and micro base stations.

How do you protect a telecom base station?

Backup power systems in telecom base stations often operate for extended periods, making thermal management critical. Key suggestions include:  
Cooling System: Install fans or heat sinks inside the battery pack to ensure efficient heat dissipation.

Why do cell towers need backup power?

Cell towers rely on backup power systems like batteries and generators to

stay operational during power outages or grid failures. Therefore, telecom providers depend on backup power to ensure a constant power supply. The backup power for cell towers becomes crucial to notify responders and call centers during crises, ultimately saving lives.

What makes a telecom battery pack compatible with a base station?

**Compatibility and Installation Voltage Compatibility:** 48V is the standard voltage for telecom base stations, so the battery pack's output voltage must align with base station equipment requirements. **Modular Design:** A modular structure simplifies installation, maintenance, and scalability.

## Do telecom base stations have backup power supplies

---



### Understanding Backup Battery Requirements for Telecom Base Stations

Telecom base stations require reliable backup power to ensure uninterrupted communication services. Selecting the right backup battery is crucial for network stability and ...

[Get a quote](#)

---

### Telecom Battery Backup System , Sunwoda Energy

A telecom battery backup system is a comprehensive portfolio of energy storage batteries used as backup power for base stations to ensure a reliable and stable power supply.



[Get a quote](#)

---



### Hybrid Power Supply System for Telecommunication Base Station

This research paper presents the results of the implementation of solar hybrid power supply system at telecommunication base tower to reduce the fuel consumption at rural area. An ...

[Get a quote](#)

---

## What Powers Telecom Base Stations During Outages?

Telecom batteries for base stations are backup power systems using valve-regulated lead-acid (VRLA) or lithium-ion batteries. They ensure uninterrupted connectivity ...

[Get a quote](#)



## How to Select the Best ESTEL Battery Backup for Base Stations

ESTEL battery backup systems excel in meeting these challenges, offering an uninterruptible power supply tailored to the needs of telecommunications equipment. By ...

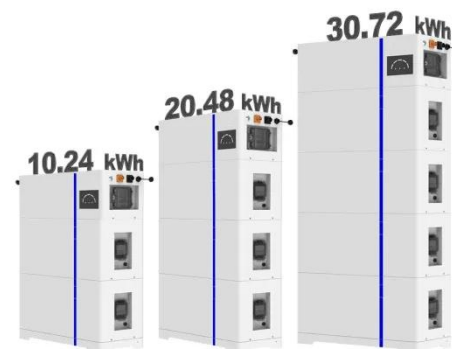
[Get a quote](#)

## Telecom Backup Power Systems

In recent years, telecom operators and network equipment suppliers are gradually or have begun to seek and research new power backup solutions. Lithium-ion ...

[Get a quote](#)

ESS



## Base Station Batteries

REVOV's lithium iron phosphate (LiFePO4) batteries are ideal telecom base station batteries. These batteries



offer reliable, cost-effective backup power for communication networks. They ...

[Get a quote](#)

## Distribution network restoration supply method considers 5G base

Aiming at the shortcomings of existing studies that ignore the time-varying characteristics of base station's energy storage backup, based on the traditional base station ...

[Get a quote](#)



## Telecom battery backup systems

Telecom battery backup systems of communication base stations have high requirements on reliability and stability, so batteries are generally used as backup power to ...

[Get a quote](#)

## TELECOM SITES POWER CONTROL & MANAGEMENT

What We'll Cover in This White Paper

Across a network of base stations, you'll find a variety of different equipment and power sources available to keep the network up and running. We will ...

[Get a quote](#)



**LPSB48V400H**  
48V or 51.2V



## Securing Backup Power for Telecom Base Stations - ...

Telecom base stations are often installed in remote locations or areas with unreliable grid infrastructure. Consequently, they rely heavily on ...

[Get a quote](#)

## CTECHI 5G Telecom Base Station Battery 48V 50Ah ...

CTECHI 5G Telecom Base Station Battery 48V 50Ah Power System Solution UPS Backup Battery The CTECHI 50Ah 48V LiFePO4 Battery is a high ...

[Get a quote](#)



## Overview of Telecom Base Station Batteries

Definition Telecom base station battery is a kind of energy storage equipment dedicatedly designed to provide backup



power for telecom base stations, ...

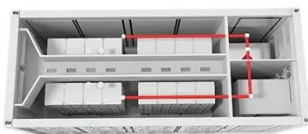
[Get a quote](#)



## Understanding Backup Battery Requirements for ...

Telecom base stations require reliable backup power to ensure uninterrupted communication services. Selecting the right backup battery is ...

[Get a quote](#)



## Telecom Base Station Backup Power Solution: Design ...

Among various battery technologies, Lithium Iron Phosphate (LiFePO4) batteries stand out as the ideal choice for telecom base station ...

[Get a quote](#)

## Securing Backup Power for Telecom Base Stations - leagend

Telecom base stations are often installed in remote locations or areas with



unreliable grid infrastructure. Consequently, they rely heavily on backup power systems to ...

[Get a quote](#)



## A Beginner's Guide to Understanding Telecom Power Supply ...

Unlike standard power systems, telecom power supplies are engineered to handle the unique requirements of telecommunication systems. They must provide stable voltage, ...

[Get a quote](#)

## What Are the Critical Aspects of Telecom Base Station Backup ...

Telecom base station backup batteries are essential for ensuring uninterrupted communication by providing reliable, long-lasting power during outages. Critical aspects ...

[Get a quote](#)



## Telecom Base Station Backup Power Solution: Design Guide for ...



Among various battery technologies, Lithium Iron Phosphate (LiFePO4) batteries stand out as the ideal choice for telecom base station backup power due to their high safety, ...

[Get a quote](#)

---

## A Beginner's Guide to Understanding Telecom Power

...

Unlike standard power systems, telecom power supplies are engineered to handle the unique requirements of telecommunication systems. ...

[Get a quote](#)



---

## Efficient Telecom Power Supplies , DigiKey

To overcome the limitations of active clamp forward converters, a new generation of power supply technologies has emerged, offering enhanced ...

[Get a quote](#)

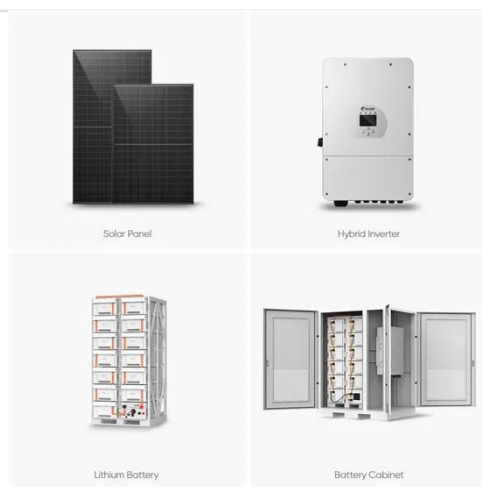
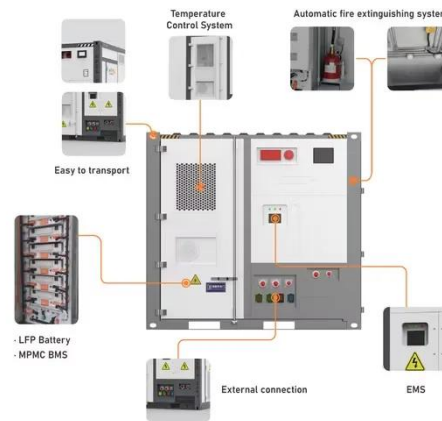
---

## Fuel Cells for Backup Power in Telecommunications ...

Most telecommunications facilities have at least eight-hour backup-- often required by regulation--but locations

prone to lengthy power outages, such as hurricane-prone areas, ...

[Get a quote](#)



## What is a Base Station in Telecommunications?

Discover the role and functionality of a base station in telecommunications networks. Learn how these critical components manage communication ...

[Get a quote](#)

## Cell Tower Backup Power for Reliable Uptime

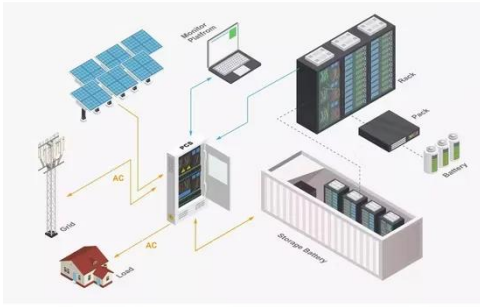
Cell towers rely on backup power systems like batteries and generators to stay operational during power outages or grid failures. Therefore, telecom providers depend on ...

[Get a quote](#)



## UPS for Telecom Applications [Cell Towers & WISP]

A proper UPS (Uninterrupted Power Supply) backup is necessary for telecom applications in order to have



uninterrupted service for its always growing customer base in the event of power ...

[Get a quote](#)

---

## Contact Us

For catalog requests, pricing, or partnerships, please visit:  
<https://www.zenius.co.za>