

## SolarMax Energy Systems

# Communication base station inverter equipment has high power consumption



## Overview

---

What is a base station vs a consumer?

consumer is the base station. The power per sub- density in the area covered by the base station. power consumption per user. stations and the backhaul network. For the base 1.5 m. per active user of approximately 3 Mb/s.

What is the impact of base stations?

The impact of the Base Stations comes from the combination of the power consumption of the equipment itself (up to 1500 Watts for a nowadays macro base station) multiplied by the number of deployed sites in a commercial network (e.g. more than 12000 in UK for a single operator).

What is the largest energy consumer in a base station?

The largest energy consumer in the BS is the power amplifier, which has a share of around 65% of the total energy consumption . Of the other base station elements, significant energy consumers are: air conditioning (17.5%), digital signal processing (10%) and AC/DC conversion elements (7.5%) .

Is there a direct relationship between base station traffic load and power consumption?

The real data in terms of the power consumption and traffic load have been obtained from continuous measurements performed on a fully operated base station site. Measurements show the existence of a direct relationship between base station traffic load and power consumption.

How much power does a base station use?

The power per sub- density in the area covered by the base station. power consumption per user. stations and the backhaul network. For the base 1.5 m. per active user of approximately 3 Mb/s. We base station, which includes the PUE overhead. and a range of 340 m. LTE has the highest power largest range, of approximately 470 m. HSPA.

How do base stations affect mobile cellular network power consumption?

Base stations represent the main contributor to the energy consumption of a mobile cellular network. Since traffic load in mobile networks significantly varies during a working or weekend day, it is important to quantify the influence of these variations on the base station power consumption.

## Communication base station inverter equipment has high power con

---



### **Application of smart power usage on the communication base station**

Using intelligent power management technology, it can realize intelligent power supply to communication equipment, providing appropriate power supply according to the actual ...

[Get a quote](#)

---

### **Telecom Power-5G power, hybrid and iEnergy ...**

ZTE's Telecom Power solutions mainly includes: 5G power supply, hybrid energy and iEnergy network energy management solutions to fully meet the needs of ...



[Get a quote](#)

---



### **Communication Base Station Energy Power Supply System**

The hybrid power supply system of wind solar with diesel for communication base stations is one of the best solutions to solve this problem. The wind-solar-diesel hybrid power supply system ...

[Get a quote](#)

---

## Optimal energy-saving operation strategy of 5G base station with

To further explore the energy-saving potential of 5 G base stations, this paper proposes an energy-saving operation model for 5 G base stations that incorporates communication caching ...

[Get a quote](#)



## (PDF) Power Consumption in Telecommunication ...

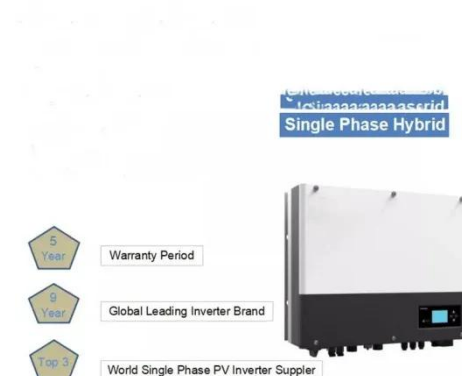
One of the main challenges for the future of in-formation and communication technologies is the reduction of the power consumption in ...

[Get a quote](#)

## Communication Base Station Inverter Application

Base station type: Power requirements for small base stations typically range from a few hundred watts to several kilowatts. Larger base ...

[Get a quote](#)



## Energy-Efficient Base Stations , part of Green Communications

The impact of the Base Stations comes from the combination of the power



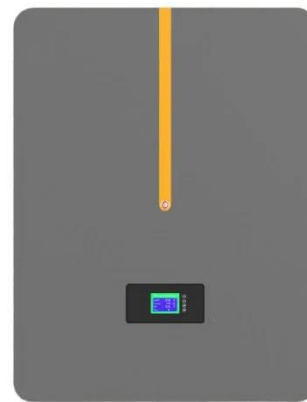
consumption of the equipment itself (up to 1500 Watts for a nowadays macro base station) multiplied by the ...

[Get a quote](#)

---

## Application of smart power usage on the ...

Using intelligent power management technology, it can realize intelligent power supply to communication equipment, providing appropriate power supply ...



[Get a quote](#)



## Why does 5g base station consume so much power ...

The power consumption of the 5G base station mainly comes from the AU module processing and conversion and high power-consuming high ...

[Get a quote](#)

---

## (PDF) Power Consumption in Telecommunication Networks: Overview ...

One of the main challenges for the future of in-formation and

communication technologies is the reduction of the power consumption in telecommunication networks.

[Get a quote](#)



## **Energy Consumption Assessment of Mobile Cellular Networks**

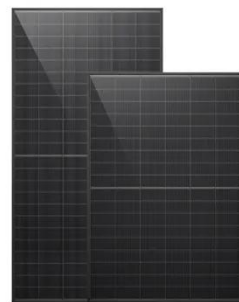
To quantify the energy consumed by a base station site it is important to know the various subsystems or equipment that make up the base station site and their contributions to the total ...

[Get a quote](#)

## **Hybrid Power Supply System for Telecommunication Base Station**

When the base station is put into operation, the method can optimize the management parameters of base stations according to power consumption data from the ...

[Get a quote](#)



## **Key Factors Affecting Power Consumption in Telecom ...**



 **LFP 48V 100Ah**

Discover the key factors influencing power consumption in telecom base stations. Optimize energy efficiency and reduce operational costs with ...

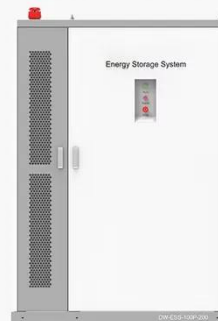
[Get a quote](#)

## Why is the communication power supply -48V?

The anti-interference of the negative power supply is better, but this is the reason a long time ago, the current digital technology has not high ...

[Get a quote](#)

### ◆ PRODUCT INFORMATION ◆



-  **BATTERY CAPACITY**  
50kWh~500kWh
-  **DC VOLTAGE RANGE**  
400V~1000V
-  **DEGREE OF PROTECTION**  
IP54
-  **OPERATING TEMPERATURE RANGE**  
-10~50°C



 **LFP 12V 100Ah**

## EFFICIENT POWER UTILIZATION IN COMMUNICATION ...

This paper consists of categorizing telecommunication Base Stations (BTS) for India and their power consumption. He also proposes some parameters for saving energy that clears the ...

[Get a quote](#)

## Front Line Data Study about 5G Power Consumption

Facebook Twitter LinkedIn The two figures above show the actual power consumption test results of 5G base



stations from different manufacturers, ...

[Get a quote](#)



## 5G Energy Efficiency Overview

The new strategies should not only focus on wireless base stations, which consumes most of the power, but it should also take into consideration the other power consumption elements for ...

[Get a quote](#)

## Coordinated scheduling of 5G base station energy ...

Auxiliary equipment includes power supply equipment, monitoring and lighting equipment. The power supply equipment manages the distribution ...

[Get a quote](#)



## Measurements and Modelling of Base Station Power Consumption under Real

Measurements show the existence of a direct relationship between base station



traffic load and power consumption. According to this relationship, we develop a linear power consumption ...

[Get a quote](#)

---

## Key Factors Affecting Power Consumption in Telecom Base Stations

Discover the key factors influencing power consumption in telecom base stations. Optimize energy efficiency and reduce operational costs with our expert insights.

[Get a quote](#)



---

## Power Consumption Modeling of Different Base Station ...

In this paper we have developed a power consumption model for macro base stations which comprises of a static power consumption part only. In contrast to that, a power consumption ...

[Get a quote](#)

---

## Measurements and Modelling of Base Station Power ...

Measurements show the existence of a

direct relationship between base station traffic load and power consumption. According to this relationship, we develop a linear power consumption ...

[Get a quote](#)



## Communication Base Station Inverter Application

Base station type: Power requirements for small base stations typically range from a few hundred watts to several kilowatts. Larger base stations or those that support more ...

[Get a quote](#)

## Communication Base Station Inverter Application

The power requirements of inverters for communication base stations vary depending on the size of the site, equipment requirements and ...

[Get a quote](#)



## Communication Base Station Energy Solutions

The Importance of Energy Storage Systems for Communication Base Station With the expansion of global



communication networks, especially the advancement of 4G and 5G, remote ...

[Get a quote](#)

---

## Multi-objective cooperative optimization of communication base station

Recently, 5G communication base stations have steadily evolved into a key developing load in the distribution network. During the operation process, scientific dispatching ...



[Get a quote](#)

---

## Contact Us

For catalog requests, pricing, or partnerships, please visit:  
<https://www.zenius.co.za>