

SolarMax Energy Systems

Chad rooftop photovoltaic panel size standards



Overview

How many solar panels can you put on a roof?

There is no standardized chart that will tell you, for example, “A typical 300-watt solar panel is this long and this wide.” If you want to calculate how many solar panels you can put on your roof, you will obviously need to know the size of a solar panel. Example: 5kW solar system is comprised of 50 100-watt solar panels.

How much roof area does a 15kW photovoltaic power plant need?

If you want to install a 15KW photovoltaic power plant, it will require approximately 100 square meters of roof area. If we install a 15KW household photovoltaic power plant, the number of high-power solar panels and low-power solar panels used:.

What are the dimensions of a photovoltaic module?

The corresponding dimensions are: Photovoltaic module composed of 60 solar cells: 1.635 square meters (1.65 meters x 0.991 meters) Photovoltaic module composed of 72 solar cells: 1.938 square meters (1.956 meters x 0.991 meters) Note: There are larger and more efficient photovoltaic modules on the market now.

How many Watts Does a solar panel produce per square foot?

Dividing the specified wattage by the square footage of the solar panel will give us just this result: The average solar panel output per area is 17.25 watts per square foot. Let's say that you have 500 square feet of roof available for solar panel installation.

What is the minimum array area requirement for a solar PV inverter?

Although the RERH specification does not set a minimum array area requirement, builders should minimally specify an area of 50 square feet in order to operate the smallest grid-tied solar PV inverters on the market.

How much weight does a PV system add to a roof?

A conventional PV system that includes racking materials will add approximately 6 pounds per square foot of dead load to the roof or structure, though actual weights can vary for different types of systems. Wind will add live loads; the magnitude of live loads will depend on the geographic region and the final PV system.

Chad rooftop photovoltaic panel size standards



How to Choose the Right Solar Panel Size for Your ...

Find the ideal solar panel size for your roof. Learn how to match panel dimensions with roof space, sunlight, and budget for optimal performance and efficiency.

[Get a quote](#)

Photovoltaic panel sizes: a comprehensive guide to choosing the ...

A guide to choosing the ideal photovoltaic panel size to optimize space, energy efficiency, and costs, from compact solutions to large-format panels.



[Get a quote](#)



The best solar panel size guide every homeowner needs

Learn how to choose the ideal solar panel size for your home with charts, standard dimensions, and tips to calculate size per kW in this complete guide.

[Get a quote](#)

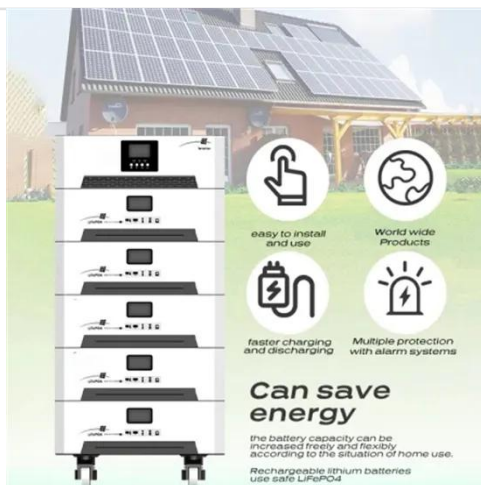
The Australian Solar Mounting Systems Guide

All solar panel mounting systems will have a limit of building height - typically 10 m, but sometimes 20 m. For example, Australian company SunLock supplies a 'one size fits most' set ...

[Get a quote](#)

HEAT DISSIPATION

Cold aisle containment, making optimal refrigeration effect;



Solar Photovoltaic: SPECIFICATION, CHECKLIST AND GUIDE

Builders that intend to meet both the solar PV and solar water heating RERH specifications should detail the location and the square footage of the roof area to accommodate both technologies.

[Get a quote](#)

Solar Photovoltaic: SPECIFICATION, CHECKLIST AND GUIDE

Photovoltaic module composed of 60 solar cells: 1.635 square meters (1.65 meters x 0.991 meters) Photovoltaic module composed of 72 solar cells: 1.938 square meters (1.956 ...

[Get a quote](#)



The best solar panel size guide every homeowner needs



Learn how to choose the ideal solar panel size for your home with charts, standard dimensions, and tips to calculate size per kW in this complete ...

[Get a quote](#)

Solar Panel Dimensions and Sizes: Complete Guide

There are three main sizes of solar panels to know: 60-cell, 72-cell, and 96-cell. For commercial and residential solar panels, the 60-cell and 72-cell solar ...

[Get a quote](#)



Solar PV Analysis of N'Djamena, Chad

We've added a feature to calculate minimum solar panel row spacing by location. Enter your panel size and orientation below to get the minimum spacing in N'Djamena, Chad.

[Get a quote](#)

Guidelines for the dimensions of solar panels

Photovoltaic module composed of 60 solar cells: 1.635 square meters (1.65 meters x 0.991 meters) Photovoltaic

module composed of 72 solar cells:
1.938 square meters (1.956 ...

[Get a quote](#)



Standard Solar Panel Sizes And Wattages (100W ...

The goal here is to get to the average solar panel size by wattage. You can find typical dimensions of 100W, 150W, 170W, 200W, 200W, 220W, 300W, 350W, ...

[Get a quote](#)

Solar Panels for Roofs

Solar Panels for Roofs Our solar panel calculator helps you determine how many solar panels can be installed on your roof and how much electricity they can generate. It calculates the ...

[Get a quote](#)



Solar Panel Size, Dimension and Weight Australia

Understanding the size, dimensions, and weight of solar panels is crucial for an efficient and reliable solar installation. In

Australia, standard ...

[Get a quote](#)



Key Structural Considerations for Rooftop Solar on ...

An overview of structural and system design considerations for rooftop solar PV installations on commercial buildings and facilities.

[Get a quote](#)



Rooftop Solar Panels: The Ultimate Buying Guide

What are Rooftop Solar Panels? Solar panels on a roof collect sunlight and transform it into electricity using photovoltaic cells. Rooftop solar ...

[Get a quote](#)



Best Practice: Solar Roof Mounting System Design ...

Solar Panel Mounting: Attaching the solar panels to the mounting system with care to prevent damage to the

panels or the roof. Electrical ...

[Get a quote](#)



Commercial Solar Panel Sizes: An In-Depth Guide to ...

Discover your perfect fit with our in-depth guide on commercial solar panel sizes. Make informed decisions for your business's eco-friendly shift.

[Get a quote](#)

Understanding Solar Panel Dimensions In 2025: A Complete Size ...

Explore the most common solar panel dimensions in 2025, including residential and commercial sizes. Learn how solar panel size dimensions affect power, installation, and ...

[Get a quote](#)



Standard Solar Panel Sizes And Wattages (100W-500W ...

The goal here is to get to the average solar panel size by wattage. You can find



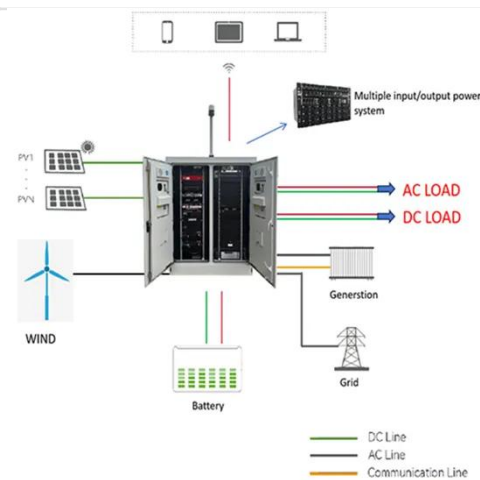
typical dimensions of 100W, 150W, 170W, 200W, 200W, 220W, 300W, 350W, 400W, and 500W solar ...

[Get a quote](#)

How Big are Solar Panels?

The efficiency of solar panels is dependent on several factors, one of which is their size. This article explores the different sizes of solar panels and the ...

[Get a quote](#)



Solar Panel Dimensions and Weight: A Complete ...

Residential solar panel dimensions can vary slightly from brand to brand, but this guide can help you understand the basics and choose the best ...

[Get a quote](#)

How Big are Solar Panels?

The efficiency of solar panels is dependent on several factors, one of which is their size. This article explores the different sizes of solar panels and

the factors to consider so you can ...

[Get a quote](#)



Solar panel sizes & dimensions: explained [UK, 2025]

What size are solar panels in the UK? There are two ways to talk about solar panel size: watts (W) and physical dimensions, though the more ...

[Get a quote](#)

Solar Photovoltaic: SPECIFICATION, CHECKLIST AND GUIDE

It is assumed that aluminum framed photovoltaic (PV) panels mounted on a "post" and rail mounting system, the most common in the industry today, will be installed by the homeowner. ...

[Get a quote](#)



How to Choose the Right Solar Panel Size for Your Roof Space

Find the ideal solar panel size for your



roof. Learn how to match panel dimensions with roof space, sunlight, and budget for optimal performance and efficiency.

[Get a quote](#)

Solar Panel Dimensions and Sizes: Complete Guide

There are three main sizes of solar panels to know: 60-cell, 72-cell, and 96-cell. For commercial and residential solar panels, the 60-cell and 72-cell solar panels size are most commonly used ...

[Get a quote](#)



✓ IP65/IP55 OUTDOOR CABINET

✓ OUTDOOR TELECOM CABINET

✓ OUTDOOR ENERGY STORAGE CABINET

✓ 19 INCH

Contact Us

For catalog requests, pricing, or partnerships, please visit:
<https://www.zenius.co.za>