

## SolarMax Energy Systems

**Can the 14 8V battery be used  
with the inverter**



## Overview

---

What voltage should a 12V inverter run on?

The input voltage of the inverter should match the battery voltage. (For example 12v battery for 12v inverter, 24v battery for 24v inverter and 48v battery for 48v inverter Summary What Will An Inverter Run & For How Long?

.

Can a 12V battery be used as an inverter?

If you are using a 12V battery, then the input voltage of the inverter must match the battery voltage. If the specifications of the battery and the inverter do not match, the system will not operate stably and may even damage the equipment. In addition, choose the right inverter power and battery capacity for your home or commercial needs.

Do inverters and batteries need to match?

The inverter and batteries must match in terms of voltage, capacity, and power output. If you are using a 12V battery, then the input voltage of the inverter must match the battery voltage. If the specifications of the battery and the inverter do not match, the system will not operate stably and may even damage the equipment.

What is the recommended battery size for an inverter?

Interpreting Results: Once you input the required data, the calculator will generate the recommended battery size in ampere-hours (Ah). For instance, if your power consumption is 500 watts, the usage time is 4 hours, and the inverter efficiency is 90%, the calculator might suggest a battery size of approximately 222 Ah.

Do lithium batteries work with inverters?

Lithium batteries typically offer better efficiency and longer life compared to

lead-acid batteries. Inverter Efficiency: Lithium batteries generally work well with modern inverters, but checking the inverter's efficiency rating is advisable. Efficiency impacts the actual power delivered to the devices.

Which Inverter should I Choose?

A 500VA inverter would be suitable, offering a balance between performance and battery life. For extended run times, consider larger inverters or additional batteries to meet higher power demands. Inverter Efficiency: Higher efficiency reduces energy loss and maximizes battery usage.

## Can the 14 8V battery be used with the inverter

---



### How Long Will a Battery Last With an Inverter?

One of the most common concerns that irritate solar power system owners is the battery running duration. This is very important since it tells you ...

[Get a quote](#)

---

### Sizing Inverter to battery

If you go with 2 12.8V 100Ah batteries then you have  $2 \times 12.8V \times 100Ah = 2560Wh$  of battery capacity. But really 90% of that since you won't use 100% of the battery each day.



[Get a quote](#)



### Calculate Battery Size For Any Size Inverter (Using Our Calculator)

In this video I will do a test to find out if a 600va computer UPS inverter can handle 14.8 v 150Ah truck battery because it is designed to operate with a

[Get a quote](#)

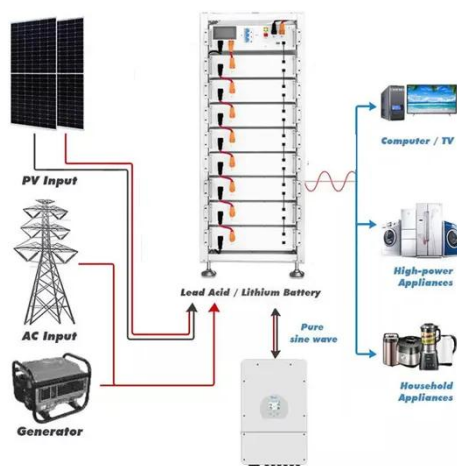
---

### How does it work? 13.8V Input

## from a 12V Battery : ...

The IC-7300 requires a voltage of 13.8V +/- 15%. I.E. it can run happily on anything from 11.7V to 15.9V. A sealed 12V lead acid battery sits at 12.9V when it is fully charged and 11.7V when ...

[Get a quote](#)



## Understanding Hybrid Inverters with Lithium Batteries

Understanding Hybrid Inverters with Lithium Batteries In the realm of renewable energy, hybrid inverters paired with lithium batteries are ...

[Get a quote](#)

## Lithium (LiFePO4) Battery Runtime Calculator

Note: Use our solar panel size calculator to find out what size solar panel you need to recharge your battery. Calculator assumption Lithium ...

[Get a quote](#)



## Can a 12V 7Ah UPS Inverter ( 220v ) run with a 14.8V 150Ah Battery

In this video I will do a test to find out if a 600va computer UPS inverter can



handle 14.8 v 150Ah truck battery because it is designed to operate with a

[Get a quote](#)

---

## Can I Attach My Small Inverter Directly to the Battery?

Yes, you can attach a small inverter directly to a battery, but doing it safely requires understanding voltage compatibility, wire sizing, and overload risks. Many DIYers assume it's ...

[Get a quote](#)



---

## How to run a refrigerator on a battery? A step by step ...

If you want a one-size-fits-all setup, you could use the following components: A 24V - 100Ah battery. A 24V - 2000 Watt inverter. And a pair ...

[Get a quote](#)

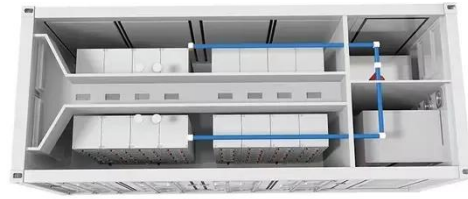
---

## Can 13.8v on panels overload 12v inverter?

Slight buzz inside inverter second before audible alert buzz. It's a really sunny day, my 400ah battery bank is near/full.

600w panels attached, could the 13.8v coming in from my ...

[Get a quote](#)



## HOW MUCH CURRENT IS DRAWN FROM THE 12V (OR 24V) BATTERY ...

If you can't find the input Watts or Amps, multiply the output Watts by 1.15 as its best practice to assume the inverter is typically 85-88% efficient. Now ensure your inverter is ...

[Get a quote](#)

## Parameter Settings for LiFePO4 Battery Inverter/Controller

Inverter/Controller Settings(12V) Select "12V (14.6V) LI (LiFePO4) Mode" or Select "User Mode" to enter values according to below parameters: Note: These parameter settings are for ...

[Get a quote](#)



## How to Safely Connect a Battery to an Inverter: A ...



Learn how to safely connect your batteries to your inverter with our guide. Avoid common wiring mistakes to optimize performance and extend ...

[Get a quote](#)

---

## What Will An Inverter Run & For How Long? (With Calculator)

So I'm gonna explain to you guys in simple words about what you can run on your any size inverter and what are the key point to keep in mind. And also how long your inverter ...

[Get a quote](#)



---

## How to Safely Connect a Battery to an Inverter: A Step-by-Step ...

Learn how to safely connect your batteries to your inverter with our guide. Avoid common wiring mistakes to optimize performance and extend system life.

[Get a quote](#)

---

## Help me understand my new LifePO4 battery ...



My inverter low voltage disconnect can't go below 12.5v and battery specs says 12.8v is low voltage, isn't 12.5v too low? As according to the Lifepo4 charts is ...

[Get a quote](#)



## Best Inverter For 100Ah Battery (+ Calculations)

A 12V 100Ah battery has a 1,200 Wh (Watt-hours) energy storage capacity. It will be able to theoretically power a 100W lightbulb for a maximum ...

[Get a quote](#)

## How bad, if at all, is 14.4V overvoltage for 12V inverter?

In general, 12v inverters will be ok with automotive voltages which can go up past 14.4volts. But you should always check the inverter (or any equipment) for their input voltage ...

[Get a quote](#)



## QUICK REFERENCE GUIDE LiFePO4 12.8V/100AH Batteries

5. BATTERY RECHARGE These types of batteries are designed to replace VRLA batteries, but it is mandatory that the

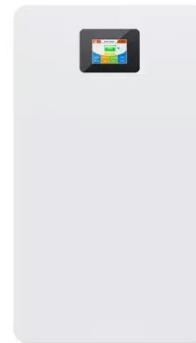
chargers used to recharge these batteries have the appropriate ...

[Get a quote](#)



## What Type of Battery Should I Use for My Inverter?

What type of battery works best for inverters? Deep-cycle batteries work best for your sine wave inverters. Here's why: They can get discharged and recharged multiple times ...

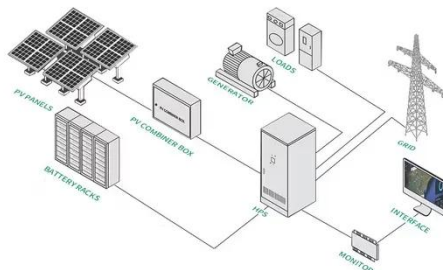


[Get a quote](#)

## What Will An Inverter Run & For How Long? (With ...

So I'm gonna explain to you guys in simple words about what you can run on your any size inverter and what are the key point to keep in mind. ...

[Get a quote](#)



## Understanding the Compatibility of LiFePO4 Batteries with ...

Battery Type and Inverter Design The type of LiFePO4 battery and the design

of the inverter can also impact compatibility. Different battery manufacturers may have specific design

...

[Get a quote](#)



## Understanding Battery Capacity and Inverter Compatibility

**Inverter Efficiency:** Lithium batteries generally work well with modern inverters, but checking the inverter's efficiency rating is advisable. Efficiency impacts the actual power ...

[Get a quote](#)

## How Long Will a Battery Last With an Inverter? (Calculator)

One of the most common concerns that irritate solar power system owners is the battery running duration. This is very important since it tells you how much time your inverter ...

[Get a quote](#)



## What size inverter do you need for a 100ah battery?

What size inverter for a 100Ah battery?



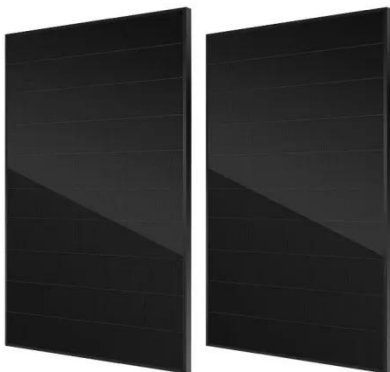
For appliances that use a relatively low amount of power, such as laptops, lights, TVs, and small fridges, ...

[Get a quote](#)

## Calculate Battery Size For Any Size Inverter (Using Our Calculator)

So I have made it easy for you, use the calculator below to calculate the battery size for 200 watt, 300 watt, 500 watt, 1000 watt, 2000 watt, 3000 watt, 5000-watt inverter

[Get a quote](#)



## Calculate Battery Size for Inverter Calculator

By inputting critical parameters such as power consumption, inverter efficiency, and desired usage time, this calculator provides a precise battery size recommendation ...

[Get a quote](#)

## What Type of Battery Should I Use for My Inverter?

What type of battery works best for

inverters? Deep-cycle batteries work best for your sine wave inverters. Here's why: They can get discharged ...

[Get a quote](#)



---

## Contact Us

For catalog requests, pricing, or partnerships, please visit:  
<https://www.zenius.co.za>