

## SolarMax Energy Systems

**Can a 38v lithium battery be used with a 48v inverter**



## Overview

---

How do I choose a lithium battery for inverter use?

When selecting a lithium battery for inverter use, it is essential to understand the key specifications: Voltage (V): Most inverter systems use 12V, 24V, or 48V batteries. Higher voltage systems are more efficient for larger power loads. Capacity (Ah or Wh): Amp-hours or Watt-hours indicate how much energy the battery can store and deliver.

What is a lithium battery for inverter?

Lithium offers unmatched performance, a longer lifespan, and better efficiency than traditional batteries. Whether you're setting up a home backup system, solar power solution, or mobile energy unit, this guide will walk you through everything you need to know about lithium batteries for inverters. Part 1.

Are all inverters compatible with lithium-ion batteries?

These include the inverter's voltage, charging algorithm, and overall compatibility with lithium-ion technology. Not all inverters are created equal. Some may be specifically designed for traditional batteries, while others can seamlessly integrate with lithium-ion batteries. Check your inverter's specifications to ensure compatibility.

Can a solar inverter be used with a lithium battery?

Integrating a solar inverter with a lithium battery can take your renewable energy setup to the next level. This combination allows for better energy storage, improved efficiency, and greater resilience during power outages. LiFePO4 batteries are particularly well-suited for solar applications because of their thermal stability and long cycle life.

Can lithium batteries be used in inverter-powered systems?

Lithium batteries can be used in a wide range of inverter-powered systems:

Home power backup: Provides energy during power outages and ensures critical appliances stay running. Solar energy storage: Ideal for storing daytime solar generation for nighttime use.

How many hours can a 3000-watt inverter run?

Let's suppose you have a 3000-watt inverter with an 85% efficiency rate and your daily runtime is about 5 hours using a 24v solar system. Now to cover watt losses when converting DC to AC, you would need around 24v 150Ah Lithium or 24v 300Ah Lead-acid Battery to run a 3000-watt inverter for 1 hour at its full capacity.

## Can a 38v lithium battery be used with a 48v inverter

---



### Lithium Battery for Inverter: Pros, Specs, and Tips

When selecting a lithium battery for inverter use, it is essential to understand the key specifications: Voltage (V): Most inverter systems use ...

[Get a quote](#)

## Can Lithium Batteries Work With Any Type of Inverter?

The short answer is no - proper inverter matching is crucial for optimal performance and safety. Let's examine the key compatibility factors for ...

[Get a quote](#)



### Lithium Battery for Inverter: Pros, Specs, and Tips

Can I replace my lead-acid battery with lithium in my inverter system? Yes, but you must ensure your inverter and charger are compatible with lithium charging profiles.

[Get a quote](#)



## Trojan Battery , Where to Buy

## Trojan Batteries

Meet new Trojan OnePack, a 48V 105Ah lithium battery pack--and the 1st golf cart battery to conquer Pikes Peak! Trojan Battery Finder is an easy-to-use ...

[Get a quote](#)



## Can I charge a 48v Li-on battery with a 52v charger? : r/batteries

A 52V charger will overcharge a 48V battery to a dangerous level if the BMS does not trigger over voltage protection. 36V is 10S and that will not be to charge to even the minimum 13S pack ...

[Get a quote](#)

## 5 Reasons Why 48V is better than a 12V Battery

If we choose a battery voltage, we can choose between 12V, 24,V or 48V. Which battery will be the most efficient, and is a 48V battery better than 12V?

[Get a quote](#)



## Can Lithium Batteries Work With Any Type of Inverter?

The Bottom Line While lithium batteries can't work with every inverter, most



modern solar and off-grid inverters now offer lithium ...

[Get a quote](#)

---

## **Best 12V, 24V, 36V, and 48V Lithium Deep Cycle Battery for a ...**

Selecting the optimal lithium deep cycle battery for your power inverter requires careful consideration of voltage requirements, capacity needs, and system integration.

[Get a quote](#)



## **Compatibility of Lithium-Ion Batteries with Existing Inverters**

In summary, installing a lithium-ion battery with an existing inverter is not only feasible but also highly beneficial. From improved efficiency and performance to enhanced energy storage and ...

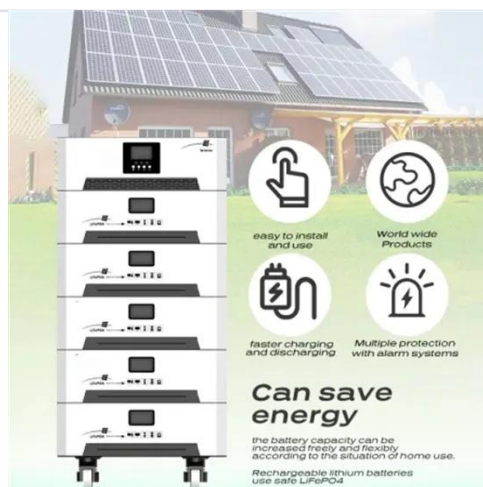
[Get a quote](#)

---

## **Understanding the Basics of Connecting Lithium ...**

Most inverters are designed for 12V, 24V, or 48V systems, so the battery should match this requirement. Also, ensure the inverter's power rating ...

[Get a quote](#)



## 48V Golf Cart Battery Bank to Inverter

Question, Can I use my 6 8v batteries series connected in my GOLF CART for emergency power by attaching a 48vdc to 120vac Inverter ? If so, what is the safest way of ...

[Get a quote](#)

## Understanding the Basics of Connecting Lithium Batteries to ...

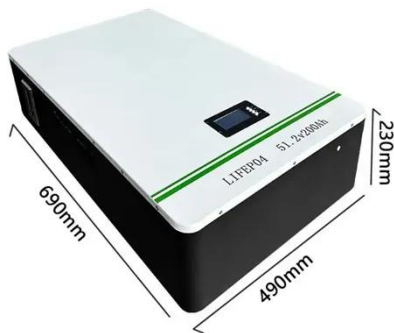
Most inverters are designed for 12V, 24V, or 48V systems, so the battery should match this requirement. Also, ensure the inverter's power rating (in watts) can handle the load ...

[Get a quote](#)



## Best 12V, 24V, 36V, and 48V Lithium Deep Cycle Battery for a Power Inverter





Selecting the optimal lithium deep cycle battery for your power inverter requires careful consideration of voltage requirements, capacity needs, and system integration.

[Get a quote](#)

## Calculate Battery Size For Any Size Inverter (Using Our Calculator)

Yes, using a lithium battery often requires a special inverter designed to handle the specific voltage and charging characteristics of lithium technology.



☒ IP65/IP55 OUTDOOR CABINET

☒ OUTDOOR MODULE CABINET

☒ OUTDOOR ENERGY STORAGE CABINET

☒ 19 INCH

[Get a quote](#)



## Calculate Battery Size For Any Size Inverter (Using Our Calculator)

You would need around 24v 150Ah Lithium or 24v 300Ah Lead-acid Battery to run a 3000-watt inverter for 1 hour at its full capacity. Here's a battery size chart for any size inverter ...

[Get a quote](#)

## Can I Use a 24V Inverter with 48V Battery Banks

No, you should not use a 24V inverter



with a 48V battery bank because the voltage mismatch can damage the inverter, pose safety hazards, and lead to inefficient power ...

[Get a quote](#)



## 24v Battery to 48v Inverter

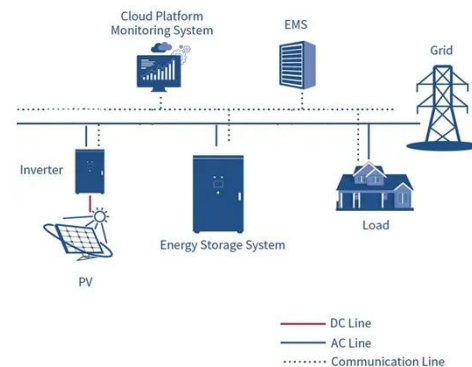
If the manual says explicitly not to do this why would you think it's OK to do so anyways? No you cannot do so. You need a 24 volt inverter, or a different battery.

[Get a quote](#)

## 3. Battery bank wiring

The maximum is at around 3 (or 4) paralleled strings. The reason for this is that with a large battery bank like this, it becomes tricky to create a balanced battery bank. In a large ...

[Get a quote](#)



## The Best 48V Lithium Battery For Inverters

There are a few things to consider when choosing the best 48v lithium battery for your inverters. One thing to think about

## LIQUID COOLING ENERGY STORAGE SYSTEM

**EMS** real-time monitoring  
No container design  
flexible site layout



Cycle Life  
**≥ 8000**

Nominal Energy  
**200kwh**

IP Grade  
**IP55**

is the wattage of the inverter you're using. Some ...

[Get a quote](#)

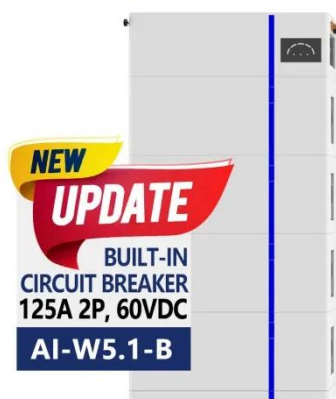
## Can I Run an AC on Lithium Battery Power? A ...

Yes, you can run an AC unit on lithium battery power--with the right system design. It requires careful selection of battery capacity, inverter ...

[Get a quote](#)



**ESS**



## A Complete Overview of 48V Batteries and Their Voltage and ...

Understanding the Basics of 48V Battery Systems What Defines a 48V Battery? A 48V battery system typically consists of multiple cells connected in series to achieve a nominal ...

[Get a quote](#)

## Power Inverter use with 48 Volt Li Battery Pack

I use the inverter to charge my ebikes and small appliances like the TV,

vacuum cleaner and coffee grinder. I don't even try to use the air conditioning but do use several 12 ...

[Get a quote](#)



## Can Lithium Batteries Work With Any Type of Inverter?

The short answer is no - proper inverter matching is crucial for optimal performance and safety. Let's examine the key compatibility factors for lithium battery and LiFePO4 battery ...

[Get a quote](#)

## Can a 38V Lithium Battery Be Used with a 48V Inverter

Ever wondered if your 38V lithium battery can power a 48V inverter? This question pops up frequently among DIY enthusiasts and professionals in renewable energy systems. Let's break ...

[Get a quote](#)



## Lithium Battery for Inverter: Pros, Specs, and Tips

Can I replace my lead-acid battery with lithium in my inverter system? Yes, but



you must ensure your inverter and charger are compatible ...

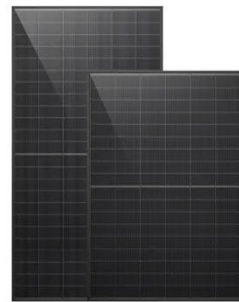
[Get a quote](#)

---

## Do I Need a Special Inverter for a Lithium Battery?

Yes, using a lithium battery often requires a special inverter designed to handle the specific voltage and charging characteristics of lithium technology.

[Get a quote](#)



---

## Contact Us

For catalog requests, pricing, or partnerships, please visit:  
<https://www.zenius.co.za>