

SolarMax Energy Systems

Battery Safety Base Station



Overview

Why do telecom base stations need a battery management system?

As the backbone of modern communications, telecom base stations demand a highly reliable and efficient power backup system. The application of Battery Management Systems in telecom backup batteries is a game-changing innovation that enhances safety, extends battery lifespan, improves operational efficiency, and ensures regulatory compliance.

Why do telecom base stations need backup batteries?

Backup batteries ensure that telecom base stations remain operational even during extended power outages. With increasing demand for reliable data connectivity and the critical nature of emergency communications, maintaining battery health is essential.

Which battery is best for telecom base station backup power?

Among various battery technologies, Lithium Iron Phosphate (LiFePO₄) batteries stand out as the ideal choice for telecom base station backup power due to their high safety, long lifespan, and excellent thermal stability.

Why do power stations need backup batteries?

These stations depend on backup battery systems to maintain network availability during power disruptions. Backup batteries not only safeguard critical communications infrastructure but also support essential services such as emergency response, mobile connectivity, and data transmission.

How do you protect a telecom base station?

Backup power systems in telecom base stations often operate for extended periods, making thermal management critical. Key suggestions include:
Cooling System: Install fans or heat sinks inside the battery pack to ensure efficient heat dissipation.

What is a battery energy storage system?

Battery energy storage systems (BESS) stabilize the electrical grid, ensuring a steady flow of power to homes and businesses regardless of fluctuations from varied energy sources or other disruptions. However, fires at some BESS installations have caused concern in communities considering BESS as a method to support their grids.

Battery Safety Base Station



What Does SimpliSafe Base Station Do? (A ...

The SimpliSafe Base Station is the central hub of the SimpliSafe home security system. It connects all the components of the system together, such as ...

[Get a quote](#)

How to Select the Best ESTEL Battery Backup for Base Stations

When selecting the best telecom battery backup systems for your base stations, you must evaluate several critical factors. These considerations ensure that your system ...



[Get a quote](#)



What is a base station energy storage battery?

Base station energy storage batteries offer vital support to enhance the stability of both telecommunications and electrical grids. During power ...

[Get a quote](#)

LI-ION BATTERY SOLUTION FOR TELECOM BASE STATION

LI-ION BATTERY SOLUTION FOR TELECOM BASE STATION Samsung SDI's safe, proven and the most reliable solution for telecom industry Meet Samsung SDI's newest BTS solution ...

[Get a quote](#)



?Base Station , SimpliSafe Support Home

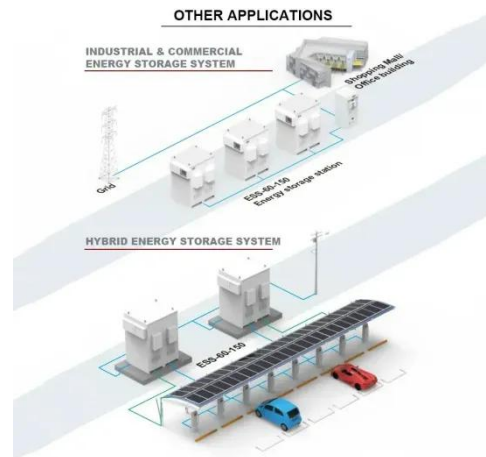
Base Station (Gen 3) Overview and Installation Guide The Base Station is the brains and primary siren of your system. It communicates with all of your ...

[Get a quote](#)

5G Micro Base Station Lithium Battery Backup

This 5G Micro Base Station Power Supply offers dependable lithium battery backup in a compact, high-efficiency format. Built with LiFePO4 chemistry, it ...

[Get a quote](#)



Battery Energy Storage Systems: Main Considerations for Safe

This webpage includes information from first responder and industry guidance as

well as background information on battery energy storage systems (challenges & fires), BESS ...

[Get a quote](#)



Can telecom lithium batteries be used in 5G telecom base stations?

While there are some challenges such as high initial cost and safety concerns, these can be addressed with proper planning and management. As a telecom lithium battery ...

[Get a quote](#)



Analysis of the Application of Lifepo4 Batteries in Base Stations

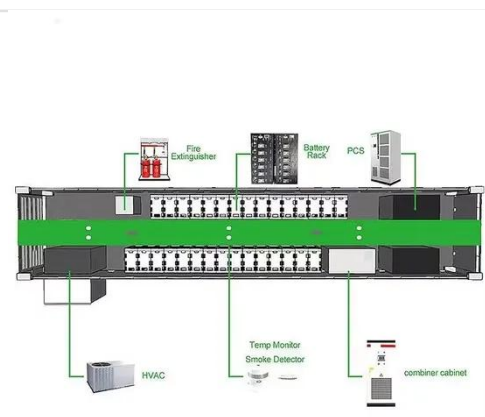
For example, a mobile base station uses 48 to 300Ah LiFePO4 battery two sets, in order to replace the battery in order to ensure the safety of power supply, two sets of LiFePO4 ...

[Get a quote](#)

Five Core Advantages of Lithium Batteries for Telecommunication Base

Thanks to their high energy density, long service life, wide temperature adaptability, intelligent safety management, and minimal maintenance needs, EverExceed telecom base station ...

[Get a quote](#)



What Are the Critical Aspects of Telecom Base Station Backup Batteries?

Telecom base station backup batteries are essential for ensuring uninterrupted communication by providing reliable, long-lasting power during outages. Critical aspects ...

[Get a quote](#)

What Powers Telecom Base Stations During Outages?

Telecom batteries for base stations are backup power systems using valve-regulated lead-acid (VRLA) or lithium-ion batteries. They ensure uninterrupted connectivity ...

[Get a quote](#)



Telecom Base Station Backup Power Solution: Design ...

Discover the 48V 100Ah LiFePO4 battery



pack for telecom base stations: safe, long-lasting, and eco-friendly. Optimize reliability with our ...

[Get a quote](#)

Five Core Advantages of Lithium Batteries for Telecommunication ...

Thanks to their high energy density, long service life, wide temperature adaptability, intelligent safety management, and minimal maintenance needs, EverExceed telecom base station

...

[Get a quote](#)



What Are the Critical Aspects of Telecom Base Station Backup ...

Telecom base station backup batteries are essential for ensuring uninterrupted communication by providing reliable, long-lasting power during outages. Critical aspects ...

[Get a quote](#)

MineGPS: Battery-Free Localization Base Station for

Coal Mine

Rescue robot self-positioning is a significant challenging technology in coal mine rescue. Towards this end, we propose a localization system with unique low-cost battery-free base stations for ...

[Get a quote](#)



What is a base station energy storage battery? , NenPower

Base station energy storage batteries offer vital support to enhance the stability of both telecommunications and electrical grids. During power outages or disruptions, these ...

[Get a quote](#)

Designing to Protect 5G Macro Base Stations for High ...

In this article, learn about protecting three major base station systems, the baseband unit, the power supply, and the backup battery system.

[Get a quote](#)



Communication Base Station Backup Battery

Communication base station backup batteries are designed to provide a consistent and reliable power supply



during electricity outages. This ensures ...

[Get a quote](#)

BESS Failure Incident Database

Some helpful definitions follow: BESS: A stationary energy storage system using battery technology. The focus of the database is on lithium ion technologies, but other battery ...

[Get a quote](#)



Working Safely In Battery Rooms

NFPA 70E 205 - General Maintenance Requirements This article from NFPA 70E Electrical Safety in the Workplace covers battery maintenance safety requirements including issues of ...

[Get a quote](#)



How to Change SimpliSafe Battery? Your Complete ...

Here's a Quick TLDR If you need to change the battery in your SimpliSafe security system, start by disarming the

system. Then, locate the base station ...

[Get a quote](#)



Home Energy Storage (Stackble system)



Product Introduction

- Scalable from 10kWh to 50 kWh
- Self-Consumption Optimization
- Integrated with inverter to avoid the compatibility problem
- LFP battery, safest and long cycle life
- Stackble design, effortless installation
- Capable of High-Powered
- Emergency Backup and Off-Grid Function

Designing to Protect 5G Macro Base Stations for High Reliability

In this article, learn about protecting three major base station systems, the baseband unit, the power supply, and the backup battery system.

[Get a quote](#)

BlacklineSafety G7 BRIDGE Technical User's Manual

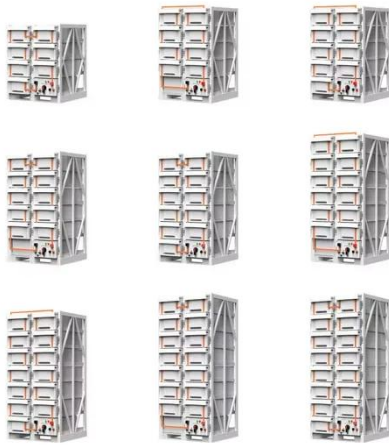
G7 Bridge portable satellite/cellular base station and the employee-worn Loner 900 or G7x safety monitoring device. G7 Bridge is self-powered and portable, allowing you to quickly move it ...

[Get a quote](#)



Battery Management Systems for Telecom Base Backup Batteries

Backup batteries ensure that telecom



base stations remain operational even during extended power outages. With increasing demand for reliable data connectivity and the ...

[Get a quote](#)

Telecom Base Station Backup Power Solution: Design Guide for ...

Discover the 48V 100Ah LiFePO4 battery pack for telecom base stations: safe, long-lasting, and eco-friendly. Optimize reliability with our design guide.

[Get a quote](#)



Contact Us

For catalog requests, pricing, or partnerships, please visit:
<https://www.zenius.co.za>