

## SolarMax Energy Systems

**Base station communication  
equipment cannot be used**



## Overview

---

In communications, a base station is a communications station installed at a fixed location and used to communicate as part of one of the following: • a system, or; • a system such as or .

What is a base station in radio communications?

In radio communications, a base station is a wireless communications station installed at a fixed location and used to communicate as part of one of the following: a wireless telephone system such as cellular CDMA or GSM cell site. Base stations use RF power amplifiers (radio-frequency power amplifiers) to transmit and receive signals.

What are the different types of base stations?

In US licensing jargon, types of base stations include: A fixed station is a base station used in a system intended only to communicate with other base stations. A fixed station can also be radio link used to operate a distant base station by remote control.

Why do we need a base station?

Technological advancements: The New technologies result in evolved base stations that support upgrades and enhancements such as 4G, 5G and beyond, its providing faster speeds with better bandwidth. Emergency services: They provide access to emergency services, so that in case of emergency, people can call through their mobile phones.

Why are base stations important in cellular communication?

Base stations are important in the cellular communication as it facilitate seamless communication between mobile devices and the network communication. The demand for efficient data transmission are increased as we are advancing towards new technologies such as 5G and other data intensive applications.

Why do base stations have receivers?

Information from neighboring jurisdictions and state law enforcement, To provide better performance than other radios, base stations have receivers that are: Select one: a. interference resistant. b. connected in series for redundancy.

What is the difference between a fixed station and a control station?

A fixed station can also be radio link used to operate a distant base station by remote control. (No mobile or hand-held radios are involved in the system.) A control station is a base station used in a system with a repeater where the base station is used to communicate through the repeater.

## Base station communication equipment cannot be used

---



### Chapter 2

To overcome physical barriers to radio communication, you may need to turn your body 90 degrees or: Select one: a. move the radio toward the ground. b. attempt to use another ...

[Get a quote](#)

### Base station cannot use repeaters

The rule very specifically says that a base station is a station at a fixed location that communicates directly with mobile stations and other base stations. Therefore, the act of using ...



[Get a quote](#)



### Flying Base station for Temporary Mobile Communications in an ...

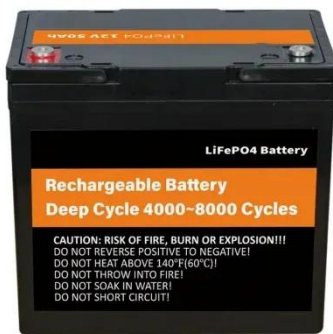
During a disaster, smart phones are useful for information distribution and collection, but mobile communication equipment such as base stations may be shut down because of a line down, a ...

[Get a quote](#)

## What Are Base Station Antennas? Complete Guide

This article will provide a thorough outlook on base station antennas from working principles, applications, installation and maintenance details and everything in between.

[Get a quote](#)



### Chapter 2

Study with Quizlet and memorize flashcards containing terms like The use of plain English in radio communications transmissions and avoidance of 10-codes is known as using:, Static and ...

[Get a quote](#)

## The Base Station in Wireless Communications: The ...

Equipped with an electromagnetic wave antenna, often placed on a tall mast, the base station enables communication between mobile terminals ...

[Get a quote](#)



### Chapter 2 Communications Flashcards , Quizlet

Study with Quizlet and memorize flashcards containing terms like Which type of communications center



equipment would be used for communications at an emergency scene? A. Teletype B. ...

[Get a quote](#)

## Base station

Base stations can be local controlled or remote controlled. Local controlled base stations are operated by front panel controls on the base station cabinet. Remote control base stations can ...

[Get a quote](#)



## Guide to Base Station Communications Equipment , Office of ...

This guide presents background information to help law enforcement agencies analyze their base station equipment needs and select superior equipment to provide reliable communication ...

[Get a quote](#)

## Base station

OverviewWireless communicationsLand surveyingComputer networkingSee also

In radio communications, a base station is a wireless communications station installed at a fixed location and used to communicate as part of one of the following: o a push-to-talk two-way radio system, or;o a wireless telephone system such as cellular CDMA or GSM cell site.

[Get a quote](#)



## The Base Station in Wireless Communications: The Key to ...

Equipped with an electromagnetic wave antenna, often placed on a tall mast, the base station enables communication between mobile terminals (such as mobile phones or ...

[Get a quote](#)

## Chapter 2

Study with Quizlet and memorise flashcards containing terms like Which federal agency issues radio licenses to fire departments that operate radio equipment?, Enhanced 9-1-1 systems ...

[Get a quote](#)



## What Is Base Station in Mobile Communication? - The Heart of ...

At the heart of this system lies the base station, a crucial component that



CE UN38.3 MSDS



enables seamless communication between mobile devices and the network. In this blog post, we will ...

[Get a quote](#)

---

## Digital forensics final exam Flashcards , Quizlet

In a \_\_\_\_\_ hand-off, a cellular communication is conditionally handed off from one base station to another, and the mobile equipment is simultaneously communicating with multiple Base ...

[Get a quote](#)

---

## What Are Base Station Antennas? Complete Guide

This article will provide a thorough outlook on base station antennas from working principles, applications, installation and maintenance ...

[Get a quote](#)

---

## Basestation

A base station (BS) is defined as a fixed communication facility that manages radio resources for one or more base transceiver stations (BTSs), facilitating



radio channel setup, frequency ...

[Get a quote](#)



## Chapter 2 Flashcards , Quizlet

Communications equipment that is to be used in flammable atmospheres must be: Select one: a. oxidation resistant. b. intrinsically safe. c. energy limited. d. flame proof. intrinsically safe. ...

[Get a quote](#)

## Chapter 2 Communications Flashcards , Quizlet

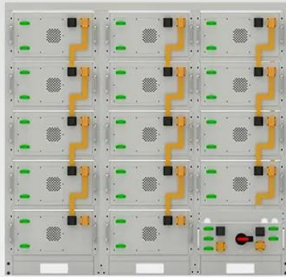
Study with Quizlet and memorize flashcards containing terms like Which is a guideline for receiving nonemergency calls?, A separate dispatch center operated by a fire department ...

[Get a quote](#)



## Communication Flashcards , Quizlet

B) Approving maintenance and repair contracts for communication equipment used by EMS systems C) Inspecting



#### Battery String-S224

- 1C Charge/Discharge
- Easy configuration and maintenance
- Power supply can be single battery string or parallel battery strings

ambulance and base station communication equipment D) Determining ...

[Get a quote](#)

## Chapter 2 Flashcards , Quizlet

Information from neighboring jurisdictions and state law enforcement, To provide better performance than other radios, base stations have receivers that are: Select one: a. ...



[Get a quote](#)



## What Is a Base Station and Its Role in Enhancing ...

When we talk about a base station, we're diving into the heart of communication technology. It's essentially a fixed point of communication within a network ...

[Get a quote](#)

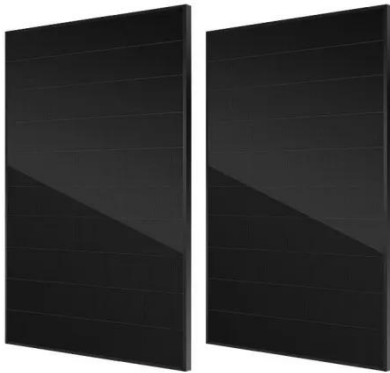
## Base Station's Role in Wireless Communication Networks

Yes, base stations can be used in remote areas to provide wireless communication services. In these areas, deployable

solutions like satellite-linked base stations or solar-powered units ...

[Get a quote](#)

#### Support Customized Product



## RTK and the Federal Communications Commission (FCC)

The transmitter at the base station is usually the larger and more powerful of the two radios. However, the highest wattage radios, 35 Watts or so, cannot be legally operated in some ...

[Get a quote](#)

## Contact Us

For catalog requests, pricing, or partnerships, please visit:  
<https://www.zenius.co.za>