

SolarMax Energy Systems

950 photovoltaic panel specifications

ESS



AI-W5.1-B-ESS

All-in-one

≥6000 Cycle Life



Overview

What is rated power output of a solar panel?

The rated power output of a solar panel is measured in watts (W) and indicates the amount of electricity that the panel can produce under standard test conditions. With enough sunlight, that number is what the panel will be generating. $P_{MPP} = I_{MPP} \times V_{MPP}$ Power at MPP equals current at MPP times voltage at MPP MPP stands for Maximum Power Point.

What is the minimum array area requirement for a solar PV inverter?

Although the RERH specification does not set a minimum array area requirement, builders should minimally specify an area of 50 square feet in order to operate the smallest grid-tied solar PV inverters on the market.

What is maximum power point voltage (VMPP)?

Maximum Power Point Voltage (V_{mpp}) is the voltage at which the power output is highest. It is the desired voltage when the panel is connected to MPPT solar equipment, such as an MPPT solar charge controller or grid-tie inverter, under standard test conditions.

How do you calculate mSv on a solar panel?

To calculate the MSV, you need to consider the highest voltage that the system can reach, taking into account the solar panel voltage and the inverter's input voltage rating. Q CELLS 400 W solar panels have a V_{oc} of 45.3 V, which is the maximum voltage that can be generated by a single panel.

Do I need to meter a photovoltaic system?

It is assumed that aluminum framed photovoltaic (PV) panels mounted on a “post” and rail mounting system, the most common in the industry today, will be installed by the homeowner. While metering the system is encouraged, the specification does not address system wiring elements for associated system sensors or monitoring equipment.

How much weight does a PV system add to a roof?

A conventional PV system that includes racking materials will add approximately 6 pounds per square foot of dead load to the roof or structure, though actual weights can vary for different types of systems. Wind will add live loads; the magnitude of live loads will depend on the geographic region and the final PV system.

950 photovoltaic panel specifications



Solaredge P950 Optimizer Datasheet , Specifications and Features

In this section, we will explore the comprehensive datasheet and technical specifications of the Solaredge P950 optimizer. By delving into the details and specifications, we can gain insight ...

[Get a quote](#)

Solar Panel, Solar Inverter & Solar Battery Technical ...

Solar Panel, Solar Inverter & Solar Battery Technical Data Sheets Data Sheets , Knowledge Is (Solar) Power Download data sheets for all of the major solar ...

[Get a quote](#)



Datasheet

POSITIVE POWER TOLERANCE Founded in 1997, Trina Solar is the world's leading total solution provider for solar energy. With local presence around the globe, Trina Solar is able to ...

[Get a quote](#)

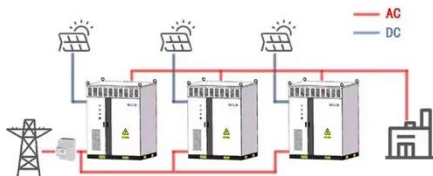
SolarEdge Commercial Power Optimizer 950W 125V, P950

Greentech Renewables supplies SolarEdge Commercial Power Optimizer 950W 125V, P950 and other pre-qualified solar equipment from SolarEdge through our extensive network of over 100 ...

[Get a quote](#)



WORKING PRINCIPLE



Solar Panel Datasheet Specifications Explained

The article covers the key specifications of solar panels, including power output, efficiency, voltage, current, and temperature coefficient, as presented in solar panel datasheets, and ...

[Get a quote](#)

PV module specifications and performance parameters

The nameplate ratings on photovoltaic (PV) panels and modules summarize safety, performance, and durability specifications. Safety ...

[Get a quote](#)



Solar Photovoltaic: SPECIFICATION, CHECKLIST AND GUIDE

The RERH specifications and checklists take a builder and a project design team

through the steps of assessing a home's solar resource potential and defining the minimum structural and ...

[Get a quote](#)



Solar Panel Datasheet Guide: How To Read And Compare Specs

Understanding solar panel datasheets isn't as complicated as it seems. In this guide, we'll break down a typical datasheet so you can confidently choose the best panel for ...

[Get a quote](#)



What's in the datasheet: A guide to reading solar panel specs

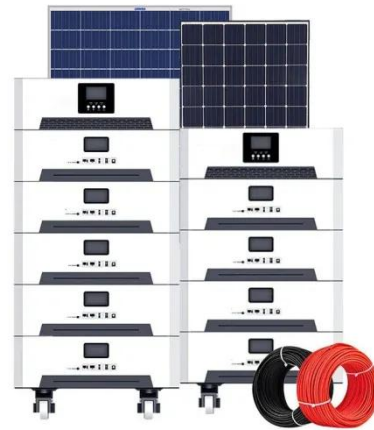
The short circuit current (I_{sc}) of a solar panel refers to the maximum current that the panel can generate when its output terminals are short-circuited. In other words, it is the ...

[Get a quote](#)

WAAREE 550Wp 144Cells 24 Volts Framed Dual ...

Elevate your energy with Waaree's 550Wp 144Cells Framed Dual-Glass Mono PERC Bifacial Module. Discover solar modules online at affordable prices.

[Get a quote](#)



Understanding the Specifications of Solar Panels and How to ...

As the demand for solar power continues to rise, it is crucial to understand the specifications that determine the efficiency and output of solar panels. In this guide, we'll help ...

[Get a quote](#)

10kW Solar System (All you need to know)

Here's how a solar panel works its free electricity magic -- when sunlight hits your solar panel, the PV cells absorb the solar energy that wakes ...

[Get a quote](#)



Solar Panel Datasheet Specifications Explained

The article covers the key specifications of solar panels, including power output,



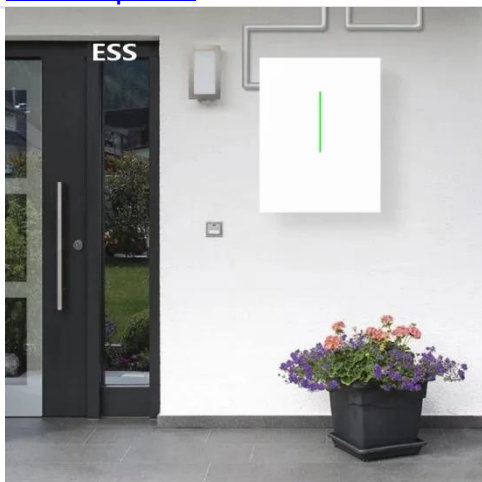
efficiency, voltage, current, and temperature coefficient, as presented in solar ...

[Get a quote](#)

Understand solar panel specification sheets and how to read them

A solar panel spec sheet provides valuable information about the operating parameters of a panel and can help designers, engineers, and installers determine how to configure a solar PV ...

[Get a quote](#)



Photovoltaic (PV) Panel Technical Specifications , The Sun Pays

Understand PV panel specs: efficiency, wattage, voltage, temperature coefficients, and durability standards. Make informed solar decisions with The Sun Pays.

[Get a quote](#)

950kW Solar System Information - Facts & Figures

Did you know that 950kW solar power systems can consist of a different number of panels depending on the size of the solar panels? Here are some common panel sizes which could ...

[Get a quote](#)



950kW Solar System Information - Facts & Figures

In this section, we will explore the comprehensive datasheet and technical specifications of the Solaredge P950 optimizer. By delving into the details and ...

[Get a quote](#)

SolarEdge-P950 Optimiser

Optimal efficiency is achieved by automatically maintaining a fixed string voltage and performance can be monitored via the SolarEdge monitoring portal. Each optimiser is equipped with the ...

[Get a quote](#)



Specification Data Sheet Solar Panel Gui

BARE MODULE CHARACTERISTICS
Operating Temperature Range -140°C to 125°C e representative of the bare

modules only. Any coatings, applied materials or packaging may ...

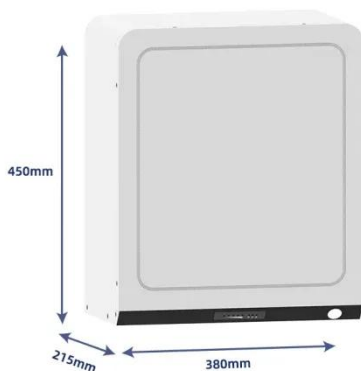
[Get a quote](#)



Understanding the Specifications of Solar Panels and ...

As the demand for solar power continues to rise, it is crucial to understand the specifications that determine the efficiency and output of solar ...

[Get a quote](#)



Solar Panel Datasheet Guide: How To Read And ...

Understanding solar panel datasheets isn't as complicated as it seems. In this guide, we'll break down a typical datasheet so you can ...

[Get a quote](#)

Contact Us

For catalog requests, pricing, or partnerships, please visit:
<https://www.zenius.co.za>