

## SolarMax Energy Systems

# 90w monocrystalline photovoltaic panel specifications



## 90w monocrystalline photovoltaic panel specifications

---



### Monocrystalline Solar Panels-90w CNBM Series

Standard Test Conditions of Monocrystalline Silicon Solar Panel 90W Series The opto-electrical specifications shown below are stabilized values being ...

[Get a quote](#)

---

### Ameresco Solar 90J 90 Watt 12 Volt Class I, Division 2 Solar Panel

Designed for long-term performance in remote off-grid installations, this 12V panel is certified for use in Class I, Division 2 hazardous locations and features a thick, scratch-resistant backsheet ...



[Get a quote](#)

---



### VIGI Solar Panel 90W , VIGI Solar Panel 90W , TP-Link Malaysia

VIG Industrial-Grade Solar Panel delivers constant power to upload devices and ensures stable operation in harsh outdoor conditions.

[Get a quote](#)

---

## 30 W MONOCRYSTALLINE SOLAR PANEL

9.92 lb (4.5 Kg) Installation: Wall/Pole Mount Pole Mount Diameter: Up to 12" Diameter Pole (304.8 mm) Impact Resistance: 52 mph (23 m/s) Downforce Load: 2400 PA Solar Cells: 36 ...

[Get a quote](#)



## SLD Tech (formerly Solarland®) ST-90P-24 90-Watt, 24-Volt ...

The SLD Tech (formerly Solarland®) ST-90P-24 Solar Panel is engineered for excellence, featuring a 90W power output and 20% module efficiency, optimized for 24V off-grid applications.

[Get a quote](#)

## VIGI Solar Panel 90W , VIGI Solar Panel 90W , TP-Link Singapore

Industrial-Grade, Grade-A Monocrystalline Silicon Solar Panel With 90W Capability, and 25+ Years Lifespan Conversion Efficiency Increased by 21.6%\* 5°/15°/25°/35°/45°/55° Adjustable ...

[Get a quote](#)



## 90 W MONOCRYSTALLINE SOLAR PANEL WITH ...



Dimensions: 47.24" L x 21.65" H x 1.37" D (1,200 mm L x 550 mm H x 35 mm D)  
Weight: 18.74 lb (8.5 Kg) Installation: Wall/Pole Mount Pole Mount Diameter: Up to 12" Diameter Pole (304.8 ...

[Get a quote](#)

## **SLD Tech (formerly Solarland®) ST-90P-24 90-Watt, ...**

The SLD Tech (formerly Solarland®) ST-90P-24 Solar Panel is engineered for excellence, featuring a 90W power output and 20% module efficiency, ...



[Get a quote](#)



## **90W Monocrystalline Solar Panel , SLD Tech**

Explore the power of SLD Tech's 90W monocrystalline solar panel. Engineered for reliability and efficiency, our solar panels are designed to thrive in hazardous environments while providing ...

[Get a quote](#)

## **Victron Solar Panel 90W-12V Mono 780x668x30mm series 4a**

Victron Solar Panel 90W-12V Mono  
780x668x30mm series 4a Victron Solar  
panels and cables - Solar panels  
monocrystalline - Solar Panel 90W-12V  
Mono 780x668x30mm series 4a SKU:

...

[Get a quote](#)



## Nature Power 90W Monocrystalline Solar Panel

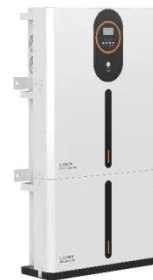
Nature Power 90W Monocrystalline Solar Panels are high efficiency 12-Volt solar panels that feature sturdy aluminum frames, high transparency tempered ...

[Get a quote](#)

## 90 W MONOCRYSTALLINE SOLAR PANEL

Dimensions: 47.24" L x 21.65" H x 1.37"  
D (1,200 mm L x 550 mm H x 35 mm D)  
Weight: 18.74 lb (8.5 Kg) Impact  
Resistance: 52 mph (23 m/s) Downforce  
Load: 2400 PA Solar Cells: 36 Cell ...

[Get a quote](#)



## 250w Monocrystalline Bi-Facial Solar Panel

Solar Panel 250w Monocrystalline 250w  
Monocrystalline Bi-facial Solar Panel  
offers high performance and reliability

for various energy needs. Known for ...

[Get a quote](#)



## 90 Watt Monocrystalline Solar Panel With Mounting Kit

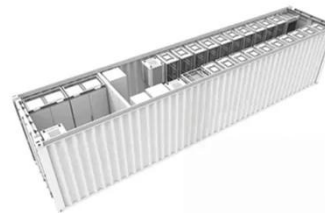
Description 90 Watt Monocrystalline Solar Panel With Mounting Kit ATS-SOLR-90W-MC-K The AccelTex Solutions Solar Panels are highly efficient and durable for numerous off-grid solar ...

[Get a quote](#)



 **TAX FREE**

**1-3MWh  
BESS**



## BlueSolar Monocrystalline Panels

Exceptional low-light performance and high sensitivity to light across the entire solar spectrum. 25-Year limited warranty on power output and performance. 5-Year limited warranty on ...

[Get a quote](#)

## 12V Victron Monocrystalline 90W Solar Panel

90W monocrystalline solar panel for installation on your motorhome roof. This solar panel made up of anodized



sturdy aluminium features a special bypass ...

[Get a quote](#)



- ✓ IP65/IP55 OUTDOOR CABINET
- ✓ IP54/55
- ✓ OUTDOOR ENERGY STORAGE CABINET
- ✓ OUTDOOR MODULE CABINET

## SLD Tech ST-90P-24- 90 Watt 24V Monocrystalline Solar Panel

Built with premium-grade materials and high-efficiency solar cells, this panel is ideal for powering remote industrial equipment, telecommunications, lighting systems, and 24V battery banks in ...

[Get a quote](#)

## 90W Monocrystalline Solar Panel , SLD Tech

Explore the power of SLD Tech's 90W monocrystalline solar panel. Engineered for reliability and efficiency, our solar panels are designed to thrive in ...

[Get a quote](#)



## Ameresco Solar 90J 90 Watt 12 Volt Class I, Division ...

Designed for long-term performance in remote off-grid installations, this 12V



panel is certified for use in Class I, Division 2 hazardous locations and features a ...

[Get a quote](#)

---

## Monocrystalline Solar Panel 85W~90W

Sunworth Monocrystalline Solar Panel 85W~90W combines robust power output and advanced technology for reliable and efficient energy storage solutions, ensuring stability and safety.

[Get a quote](#)



## What's the best solar panel for a campervan?

Different types of solar panel Before working out what size you need, there are a few different types of solar panel you'll need to be aware of: Monocrystalline or ...

[Get a quote](#)

---

## 90 Watt Monocrystalline Solar Panel With Mounting Kit

Available in a wide range of wattage options, these panels are sure to compliment any solar deployment. Each



panel ships with a wall/pole mount. View,  
Download or Print detailed ...

[Get a quote](#)



### Power Conversion System

- Single-stage three-level modularization
- Multi-branch input to reduce battery series and parallels connection

## Monocrystalline Solar Panels-90w CNBM Series

Standard Test Conditions of Monocrystalline Silicon Solar Panel 90W Series The opto-electrical specifications shown below are stabilized values being measured at Standard Test Conditions, ...

[Get a quote](#)

## CID2 Certified 90W Monocrystalline Solar Panel , SLD Tech

Explore the power of SLD Tech's CID2 certified 90W monocrystalline solar panel. Engineered for reliability and efficiency, our solar panels are designed to thrive in hazardous environments ...

[Get a quote](#)

**18650** 3.7V  
RECHARGEABLE BATTERY  
**2000mAh**



**Contact Us**

For catalog requests, pricing, or partnerships, please visit:  
<https://www.zenius.co.za>